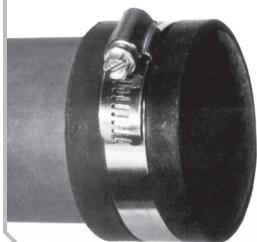




Couplings: Flex, ProSeal & No-Hub • Drains Test Caps & Plugs • Cleanout Plugs • Cover Plates

Test & Clean Out Caps

- Fits plastic and hubless cast iron DWV
- Made from the highest quality natural rubber
- Built in cross rib for extra strength
- Inside knurling grips pipe



PART NUMBER	SIZE
4417	1-1/2"
4418	2"
4419	3"
4422	4"
4840	5"
4841	6"
4849	8"

Single Test Plug



COMPLETE TEST PLUG	REPLACEMENT RUBBER ONLY	SIZE
4600	4610	1-1/2"
4601	4611	2"
4602	4612	3"
4603	4613	4"
4604	4614	5"
4605	4615	6"
4606	4616	8"

Discontinued

Econo Test Plug

- Designed with a rubber flange that grips the end of the pipe preventing slippage
- 3" and 4" test plugs supplied with a superfly wingnut.
- For plastic, cast iron DWV



PART NUMBER	SIZE
4801	1"
4802	1-1/4"
4803	1-1/2"
4804	2"
4806	3"
4808	4"

Simply The Best Plumber's Air Pump

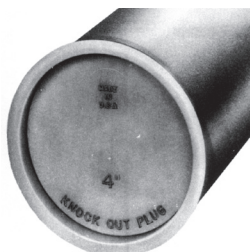
- Made of virtually unbreakable polyethylene
- 1-1/4" one piece barrel permits a large volume of air
- 48" Non-kinking reinforced hose
- Quick connect thumb valve
- Large easy one-piece grip handle
- 2" 0-160PSI gauge
- Easy to read RED pressure range arrow
- Hose attached to swivel at base to prevent breaking
- Foot pad is an integral part of pump - won't pull off



PART NUMBER
1424

Knockout Test Caps

- Solvent weld to ABS or PVC DWV
- Fits both plastic SCH 40 and foam core DWV



Made in U.S.A.

PART NUMBER	SIZE
4842	1-1/2"
4843	2"
4844	3"
4845	4"