

Example: CLWD - 500 - 12 - 134



Material	Configuration	Wire Size	Bolt Size	Bolt Hole Spacing (If applicable)	Options
C = Copper	LNS = Long Barrel w/o Sight, 1-H LND = Long Barrel w/o Sight, 2-H LWS = Long Barrel w/Sight, 1-H LWD = Long Barrel w/Sight, 2-H SNS = Short Barrel w/o Sight, 1-H SND = Short Barrel w/o Sight, 2-H SWS = Short Barrel w/Sight, 1-H SWD = Short Barrel w/Sight, 2-H LNF = Long Barrel w/o Sight, Flared End LWF = Long Barrel w/Sight, Flared End LNB = Long Barrel w/o Sight, Bent-Tang LWB = Long Barrel w/Sight, Bent-Tang SNB = Short Barrel w/o Sight, Bent-Tang SWB = Short Barrel w/Sight, Bent-Tang	8 = 8 AWG 6 = 6 AWG 4 = 4 AWG 3 = 3 AWG 2 = 2 AWG 1 = 1 AWG 1/0 = 1/0 AWG 2/0 = 2/0 AWG 3/0 = 3/0 AWG 4/0 = 4/0 AWG 250 = 250 kcmil 300 = 300 kcmil 350 = 350 kcmil 400 = 400 kcmil 500 = 500 kcmil 550 = 550 kcmil 700 = 700 kcmil 750 = 750 kcmil 1000 = 1000 kcmil	06 = #6 08 = #8 10 = #10 14 = 1/4" 516 = 5/16" 38 = 3/8" 12 = 1/2" 58 = 5/8" 34 = 3/4" 78 = 7/8" 1 = 1"	Blank = 1 Hole 12 = 1/2" 58 = 5/8" 1116 = 11/16" 34 = 3/4" 78 = 7/8" 1 = 1" 116 = 1-1/16" 118 = 1-1/8" 114 = 1-1/4" 112 = 1-1/2" 134 = 1-3/4" 178 = 1-7/8" 2 = 2"	Blank = (Sn) Tin Plated Straight Tang A = (Ag) Silver Plated 4 = 45 Degree Bent-Tang 9 = 90 Degree Bent-Tang U = Undrilled X(###) = Special

TYPE
CSWS

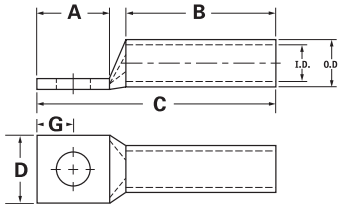
Features

- Manufactured from high strength seamless copper tubing
- Electro-Tin plated
- Chamfered entry
- Color coded
- Suitable for use in circuits rated 35KV or less, proper high voltage spacing and insulation techniques must be used
- UL Listed and CSA Certified with ILSCO and major competitor's compression tools
- UL467 Listed 500 kcmil - 10 AWG , #10 - #2 SOL
- For direct bury 500 kcmil - 10 grounding and bonding
- Rated to 90° C

Benefits

- Offers maximum conductivity and excellent crimping characteristics
- Provides low contact resistance
- For easy conductor insertion
- Identifies the proper compression die
- Application versatility

A



Catalog Number	Wire Size	Alt Wire Size	Expanded* Wire Range	Bolt Size	Stud Hold Dia.	Dimensions					Die Color Code	Die Index	O.D.	I.D.
						A	B	C	D	G				
CSWS-8-10	#8 AWG	#8 FLEX, #8 SOL	-	10	0.219	0.562	0.500	1.257	0.374	0.258	Red	I-21	0.272	0.179
CSWS-8-14	#8 AWG	#8 FLEX, #8 SOL	-	1/4	0.281	0.680	0.500	1.375	0.486	0.320	Red	I-21	0.272	0.179
CSWS-8-516	#8 AWG	#8 FLEX, #8 SOL	-	5/16	0.343	0.875	0.500	1.570	0.532	0.352	Red	I-21	0.272	0.179
CSWS-8-38	#8 AWG	#8 FLEX, #8 SOL	-	3/8	0.406	0.875	0.500	1.570	0.593	0.414	Red	I-21	0.272	0.179
CSWS-6-10	#6 AWG	#6 FLEX, #6 SOL	-	10	0.219	0.562	0.500	1.257	0.440	0.258	Blue	I-24	0.320	0.225
CSWS-6-14	#6 AWG	#6 FLEX, #6 SOL	-	1/4	0.281	0.680	0.500	1.375	0.440	0.320	Blue	I-24	0.320	0.225
CSWS-6-516	#6 AWG	#6 FLEX, #6 SOL	-	5/16	0.343	0.875	0.500	1.570	0.530	0.352	Blue	I-24	0.320	0.225
CSWS-6-38	#6 AWG	#6 FLEX, #6 SOL	-	3/8	0.406	0.875	0.500	1.570	0.598	0.414	Blue	I-24	0.320	0.225
CSWS-6-12	#6 AWG	#6 FLEX, #6 SOL	-	1/2	0.562	1.250	0.500	1.945	0.755	0.546	Blue	I-24	0.320	0.225
CSWS-4-10	#4 AWG	#4 SOL	4-6 AWG	10	0.219	0.562	0.500	1.296	0.486	0.258	Gray	I-29	0.343	0.250
CSWS-4-14	#4 AWG	#4 SOL	4-6 AWG	1/4	0.281	0.680	0.500	1.414	0.486	0.320	Gray	I-29	0.343	0.250
CSWS-4-516	#4 AWG	#4 SOL	4-6 AWG	5/16	0.343	0.875	0.500	1.609	0.486	0.352	Gray	I-29	0.343	0.250
CSWS-4-38	#4 AWG	#4 SOL	4-6 AWG	3/8	0.406	0.875	0.500	1.609	0.593	0.414	Gray	I-29	0.343	0.250
CSWS-4-12	#4 AWG	#4 SOL	4-6 AWG	1/2	0.562	1.250	0.500	1.984	0.750	0.546	Gray	I-29	0.343	0.250
CSWS-3-10	#3 AWG	#4 FLEX	3-6 AWG	10	0.219	0.562	0.625	1.442	0.532	0.258	White	I-29	0.375	0.275
CSWS-3-14	#3 AWG	#4 FLEX	3-6 AWG	1/4	0.281	0.680	0.625	1.560	0.532	0.320	White	I-29	0.375	0.275
CSWS-3-516	#3 AWG	#4 FLEX	3-6 AWG	5/16	0.343	0.875	0.625	1.755	0.532	0.352	White	I-29	0.375	0.275
CSWS-3-38	#3 AWG	#4 FLEX	3-6 AWG	3/8	0.406	0.875	0.625	1.755	0.593	0.414	White	I-29	0.375	0.275
CSWS-3-12	#3 AWG	#4 FLEX	3-6 AWG	1/2	0.562	1.250	0.625	2.130	0.750	0.546	White	I-29	0.375	0.275
CSWS-2-10	#2 AWG	#2 SOL	2-6 AWG	10	0.219	0.562	0.625	1.473	0.599	0.258	Brown	I-33	0.421	0.312
CSWS-2-14	#2 AWG	#2 SOL	2-6 AWG	1/4	0.281	0.680	0.625	1.591	0.599	0.320	Brown	I-33	0.421	0.312
CSWS-2-516	#2 AWG	#2 SOL	2-6 AWG	5/16	0.343	0.875	0.625	1.786	0.599	0.352	Brown	I-33	0.421	0.312
CSWS-2-38	#2 AWG	#2 SOL	2-6 AWG	3/8	0.406	0.875	0.625	1.786	0.599	0.414	Brown	I-33	0.421	0.312
CSWS-2-12	#2 AWG	#2 SOL	2-6 AWG	1/2	0.562	1.250	0.625	2.161	0.750	0.546	Brown	I-33	0.421	0.312
CSWS-1-10	#1 AWG	#2 FLEX	1-6 AWG	10	0.219	0.562	0.625	1.517	0.673	0.258	Green	I-37	0.468	0.359
CSWS-1-14	#1 AWG	#2 FLEX	1-6 AWG	1/4	0.281	0.875	0.625	1.830	0.673	0.320	Green	I-37	0.468	0.359
CSWS-1-516	#1 AWG	#2 FLEX	1-6 AWG	5/16	0.343	0.875	0.625	1.830	0.673	0.352	Green	I-37	0.468	0.359
CSWS-1-38	#1 AWG	#2 FLEX	1-6 AWG	3/8	0.406	0.875	0.625	1.830	0.673	0.414	Green	I-37	0.468	0.359
CSWS-1-12	#1 AWG	#2 FLEX	1-6 AWG	1/2	0.562	1.250	0.625	2.205	0.750	0.546	Green	I-37	0.468	0.359
CSWS-1/0-10	1/0 AWG	#1 FLEX	1/0-6 AWG	10	0.219	0.562	0.850	1.768	0.738	0.258	Pink	I-42	0.515	0.390
CSWS-1/0-14	1/0 AWG	#1 FLEX	1/0-6 AWG	1/4	0.281	0.875	0.850	2.081	0.738	0.320	Pink	I-42	0.515	0.390
CSWS-1/0-516	1/0 AWG	#1 FLEX	1/0-6 AWG	5/16	0.343	0.875	0.850	2.081	0.738	0.352	Pink	I-42	0.515	0.390
CSWS-1/0-38	1/0 AWG	#1 FLEX	1/0-6 AWG	3/8	0.406	0.875	0.850	2.081	0.738	0.414	Pink	I-42	0.515	0.390
CSWS-1/0-12	1/0 AWG	#1 FLEX	1/0-6 AWG	1/2	0.562	1.250	0.850	2.456	0.738	0.546	Pink	I-42	0.515	0.390

All wire sizes, unless noted otherwise, are American Wire Gauge (AWG)

* When installed with specified dieless tools

See pages 80 to 90 for complete tooling information.

For Bent Tangs change the 4th letter to a B and add "-4" for 45 deg. or "-9" for 90 deg.

Tested to UL 486A/B, UL File E6207