



Medium Base Sockets Phenolic Snap-In

Keyless Lampholders - Snap-In



90-540
Snap-In Socket
6" AWM B/W Leads 105°C
Ht. 1 1/2"
Dia. 1 1/4"
Bracket 1/4" Below
660W-250V



90-595
Snap-In Socket
Bracket Extends 1/2" from
End of Socket
7" AWM B/W Leads 105°C
Ht. 1 1/2"
Dia. 1 1/4"
660W-250V



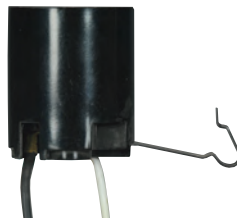
90-543
Snap-In Socket for 6" Pans
Bracket Extends 7/8" from
End of Socket
8" AWM B/W Leads 105°C
Ht. 1 1/2"
Dia. 1 1/4"
660W-250V



90-542
Snap-In Socket for 8" & 10" Pans
Bracket Extends 1 3/8" from
End of Socket
8" AWM B/W Leads 105°C
Ht. 1 1/2"
Dia. 1 1/4"
660W-250V



80-2299
9" AWM Leads
Snap-In Socket w/Top Rim &
for 3 1/4" - 4" Holders
B/W Leads 105°C
Ht. 1 1/2"
Dia. 1 1/4"
660W-250V



80-2162
Snap-In Socket
Bracket Extends 3/4"
from End of Socket
9" AWM B/W Leads 105°C
Ht. 1 1/2"
Dia. 1 1/4"
660W-250V



80-2163
Straight Bracket w/Hole
Bracket Extends 1" from End of Socket
8" AWM B/W Leads 105°C
CSSNP
Ht. 1 1/2"
Dia. 1 1/4"
660W-250V

Keyless Lampholders - "U" Clip Snap-In



90-541 8" AWM Leads
80-1798 12" AWM Leads
Snap-In Socket
for 3 1/4"-4" Holders
B/W Leads 105°C
Ht. 1 1/2"
Dia. 1 1/4"
660W-250V



80-1645
Snap-In Socket
for 3 1/4"-4" Holders
12" AWM B/W Leads 125°C
Ht. 1 1/2"
Dia. 1 1/4"
660W-250V



80-1642
Snap-In Double Spring Clip
w/ 12" B/W Leads 150°C
Ht. 1 1/2"
Dia. 1 1/4"
Bracket 3/4" From Socket
660W-250V



80-1766
Snap-In Double
with Flange Rim
13" B/W Leads 105°C
Ht. 1 1/2"
Dia. 1 5/8"
660W-250V