

4

3

2

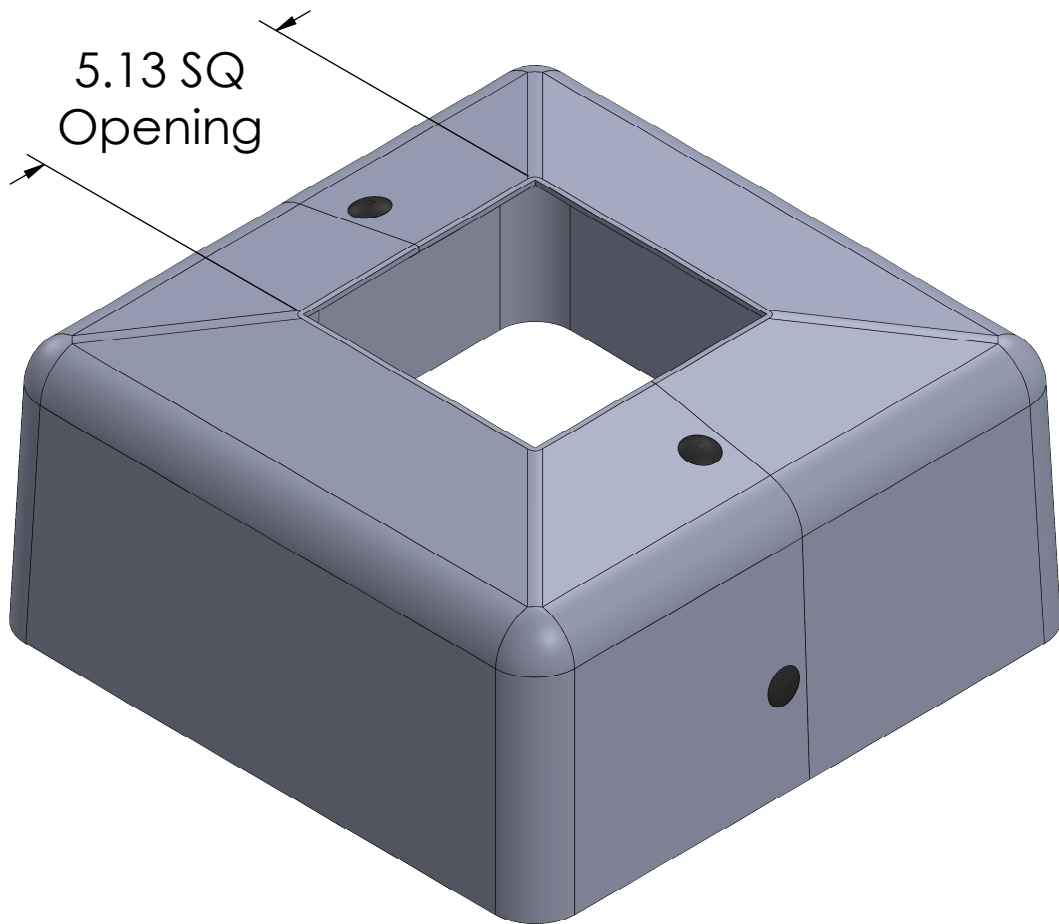
1

B

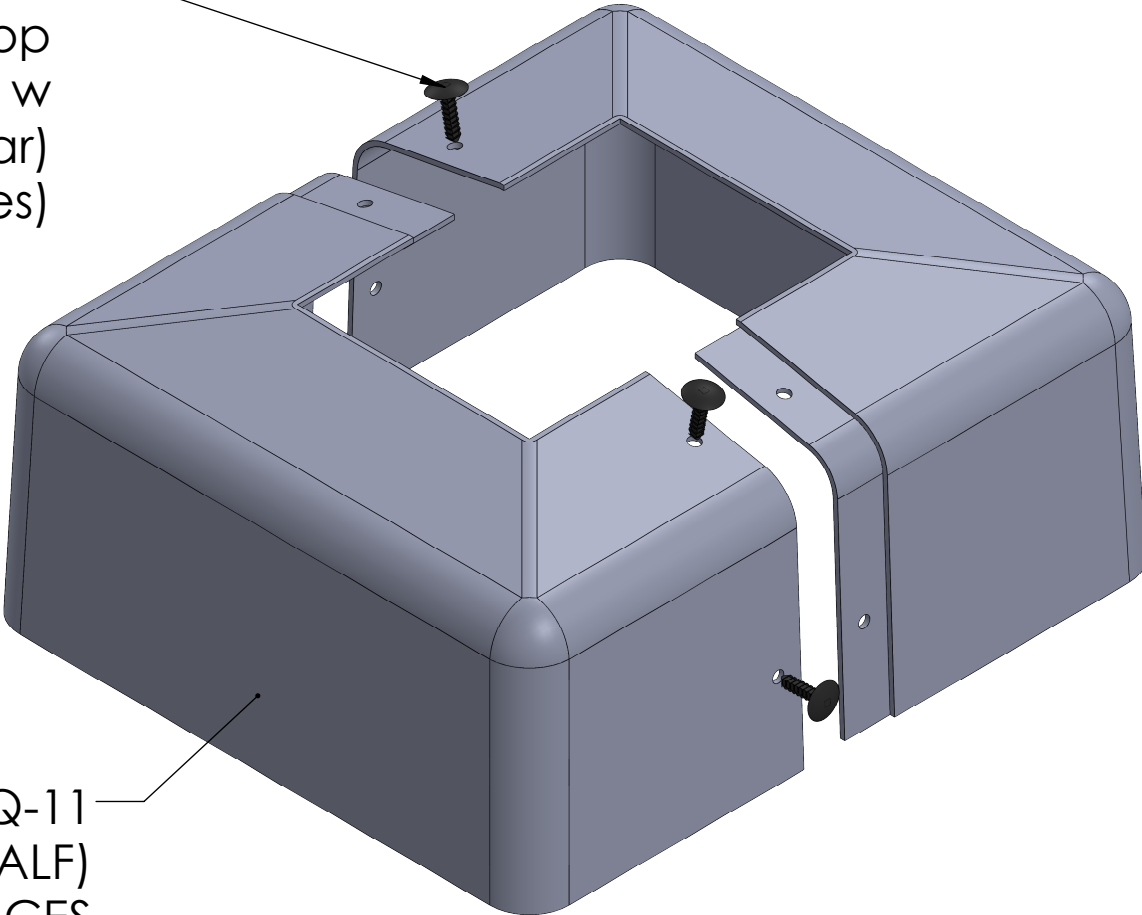
B

A

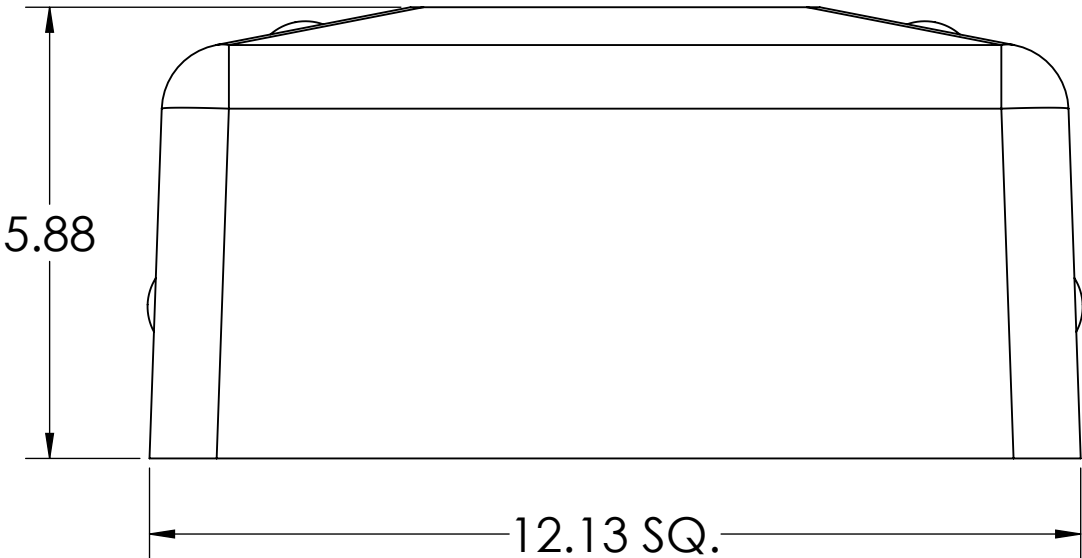
A



Plastic Push Pins
3/4" h x 5/8" w at top
Finns are +/- 1/4" w
(Or Similar)
(4 Places)




S5SQ-11
(HALF)
2 PLACES



All dimensions and specifications are
subject to change without any notice.

PROPRIETARY AND CONFIDENTIAL
THE INFORMATION CONTAINED IN
THIS DRAWING IS THE SOLE
PROPERTY OF **Energy Light, Inc.**
ANY REPRODUCTION IN PART OR
AS A WHOLE WITHOUT THE WRITTEN
PERMISSION OF **Energy Light, Inc.**
IS PROHIBITED.

		UNLESS OTHERWISE SPECIFIED:		NAME	DATE	TITLE: Light Pole Base Cover for 5" Width Square Poles		
		DIMENSIONS ARE IN INCHES TOLERANCES: FRACTIONAL ± 1/64 ANGULAR: ± 0.5° TWO PLACE DECIMAL ±0.01 THREE PLACE DECIMAL ±0.005	DRAWN	MKA	05-09-23			
			ENG APPR.					
			MFG APPR.					
			Q.A.					
		INTERPRET GEOMETRIC TOLERANCING PER:	 Energy Light, Inc. 1881 Rose Road Lake Zurich, IL 60047			SIZE	ITEM NO.	REV
		MATERIAL ABS				B	S5SQ-11	
NEXT ASSY	USED ON	FINISH Dark Bronze						
APPLICATION		DO NOT SCALE DRAWING						