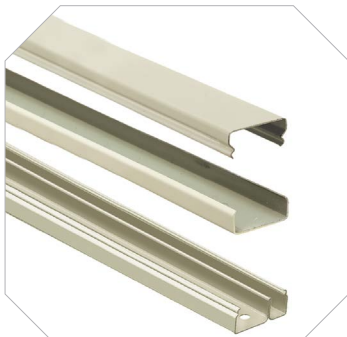


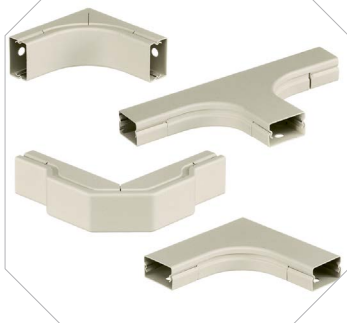
Products at a Glance

**HBL2400 and HBL2400D Raceway**

- Increased capacity, over HBL2000 Series raceway
- Divided base allows for dual services within one raceway profile

**Innovative Box Design**

- Hubbell Handi-Screw® eases installation by eliminating difficult to install long screws
- Rounded corners with no sharp edges
- One seam construction provides a clean look
- Box design allows standard wallplates to be mounted flush with virtually no perimeter profile exposed
- Full line of metal wallplates available; see Section T

**Bend Radius Fittings**

- 1½ inch (38.10mm) bend radius
- Ideal for high speed data cables including Category 5, 5e, 6 and 6A applications