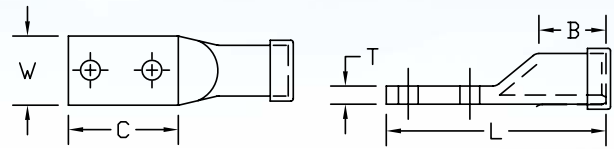


# Standard Barrel - Two Hole Tongue

## Type BLUA-D

- Manufactured from seamless aluminum tubing
- Tin plated and factory prefilled with oxide inhibitor compound
- Beveled entry for easy cable insertion
- Color coding conforms to industry standards ensuring proper die selection and providing for a faster installation
- Connectors are marked with catalog number, wire size, die index and crimp locations
- Connectors are suitable for voltages up to 35 KV
- End caps provided to prevent foreign materials from entering and contaminating the connector prior to usage
- Connectors are UL listed and CSA certified with Penn-Union, Burndy, T&B, Huskie and Greenlee tooling



CATALOG NUMBER	ALUMINUM & COPPER CONDUCTOR SIZE	STUD HOLE SIZE	FIGURE DIMENSIONS (IN.)						COLOR CODE	INSTALLATION TOOLING					
			STUD HOLE SPACING	TONGUE WIDTH "W"	TONGUE LENGTH "C"	TONGUE THICKNESS "T"	BARREL LENGTH "B"	OVERALL LENGTH "L"		PENN-UNION DIELESS MECHANICAL TOOLS	BURNDY DIE INDEX NO.	PENN-UNION DIE CATALOG NO.	WIRE STRIP LENGTH		
BLUA-1D1	1 AWG	1/2	1.75	.83	2.91	.27	.91	4.05	Gold	TDM-250 or TDM-500	471	T-471	1-1/16"		
BLUA-1/0D1	1/0 AWG	3/8	1.00	.86	1.88	.23	1.00	3.53	Tan		296	T-296	1-1/8"		
BLUA-1/0D2		3/8	1.06	.86	2.19	.23	1.00	3.84			Olive	297	T-297	1-1/4"	
BLUA-1/0D3		1/2	1.75	.84	3.00	.24	1.00	4.57	Ruby			467	T-467	1-3/8"	
BLUA-2/0D2	2/0 AWG	3/8	1.00	.94	1.88	.25	1.09	3.38			White	298	T-298	1-7/16"	
BLUA-2/0D		1/2	1.75	.94	3.18	.25	1.09	4.62	Red			324	T-324	1-9/16"	
BLUA-3/0D1	3/0 AWG	3/8	1.00	1.03	1.88	.27	1.25	3.91			Blue	TDM-500	470	T-470	1-5/8"
BLUA-3/0D		1/2	1.75	1.03	2.97	.26	1.25	4.66	Brown				299	T-299	1-3/4"
BLUA-4/0D2	4/0 AWG	3/8	1.00	1.17	2.06	.30	1.31	3.88			Green		472	T-472	2"
BLUA-4/0D		1/2	1.75	1.16	2.94	.30	1.29	4.73	Pink				300	T-300	2-1/16"
BLUA-025D1	250 kcmil	3/8	1.00	1.27	2.06	.33	1.41	4.00			Black		Hatched	473	T-473
BLUA-025D		1/2	1.75	1.25	2.91	.33	1.79	5.20	Yellow					936	T-936
BLUA-030D1	300 kcmil	3/8	1.00	1.39	2.38	.36	1.50	4.47		Gray	474			T-474P	2-7/16"
BLUA-030D		1/2	1.75	1.38	3.00	.36	1.47	5.34	Gray		303*			-	2-9/16"
BLUA-035D1	350 kcmil	3/8	1.00	1.48	2.06	.39	1.63	4.44		Brown	302			T-302P	2-11/16"
BLUA-035D		1/2	1.75	1.48	2.94	.39	1.59	5.31	Hatched		Hatched			Hatched	Hatched
BLUA-040D1	400 kcmil	3/8	1.00	1.63	2.06	.42	1.81	4.56		Hatched					
BLUA-040D2		1/2	1.75	1.63	3.13	.42	1.81	5.63	Hatched		Hatched			Hatched	Hatched
BLUA-040D	5/8	1.75	1.63	3.09	.42	1.81	5.59	Hatched		Hatched		Hatched			
BLUA-050D1	500 kcmil	3/8	1.00	1.80	2.06	.47	1.88		4.88		Hatched			Hatched	Hatched
BLUA-050D2		1/2	1.75	1.79	3.13	.46	1.88	5.94	Hatched	Hatched		Hatched			
BLUA-050D		5/8	1.75	1.80	3.22	.47	1.87	6.03			Hatched			Hatched	Hatched
BLUA-060D1	600 kcmil	3/8	1.00	1.97	2.06	.52	2.00	5.18	Hatched	Hatched		Hatched	Hatched		
BLUA-060D2		1/2	1.75	1.97	3.13	.52	2.00	6.25			Hatched			Hatched	Hatched
BLUA-060D		5/8	1.75	1.97	3.21	.52	2.00	6.34	Hatched	Hatched		Hatched	Hatched		
BLUA-075D1	750 kcmil	1/2	1.75	2.13	3.13	.47	2.25	6.31			Hatched			Hatched	Hatched
BLUA-075D		5/8	1.75	2.13	3.22	.47	2.25	6.41	Hatched	Hatched		Hatched	Hatched		
BLUA-080D1	800 kcmil	1/2	1.75	2.38	3.22	.63	2.31	7.13			Hatched			Hatched	Hatched
BLUA-080D		5/8	1.75	2.37	3.21	.62	2.31	7.12	Hatched	Hatched		Hatched	Hatched		
BLUA-090D+	900 kcmil AL 600 kcmil CU	3/8	1.00	2.14	2.00	.37	2.46	5.96			Hatched			Hatched	Hatched
BLUA-100D2	1000 kcmil	1/2	1.75	2.50	3.13	.66	2.56	7.34	Hatched	Hatched		Hatched	Hatched		
BLUA-100D		5/8	1.75	2.50	3.13	.66	2.56	7.34			Hatched			Hatched	Hatched

+ The following dieless compression tools are approved to be used on 600-900 kcmil aluminum and 600 kcmil copper: TPU-6FT, TFU-6FTB, TPU-6FTH, HDT-1000 and HDT-1000B

\* The Burndy 303 die is for use with 900 kcmil aluminum only

- Connectors from 8 AWG - 1000 kcmil are UL listed per UL486A-B and CSA certified per C22.2 No.65 for POWER applications

◆ See page 106 for expanded conductor ranges when installed with select dieless compression tools.