

Straight Blade Devices

Products at a Glance



Hospital Grade Plugs and Connectors

- Hospital Grade with green dot symbol
- Powerful offsetting cord grips clamp on individual conductors
- Transparent angled wiring entrance holes permit "straight in" conductor insertion
- Valise® devices have unique patented clamp type terminals, provide a superior electrical connection



Heavy Duty Insulgrip® Plugs and Connectors

- Beveled housing prevents snagging
- Integral VARI-SIZE® insert adjusts to a wide range of cord sizes: .23 to .72 inch (5.8 to 18.3).
- Individually molded face for each blade configuration keeps debris out of plug interior
- Ribbed nylon housing is impact and chemical resistant



Watertight and Dust Tight Devices

- Multiple "U-Drive" fast lead body assembly screws
- Color coded Kellems GOTCHA® rings provide increased cord retention
- Powerful nylon cord grip prevents strain on terminals
- Dust and moisture seal keeps out liquids, metal filings and other foreign materials
- Closure plug seals connector body when disconnected from plug

Straight Blade Devices

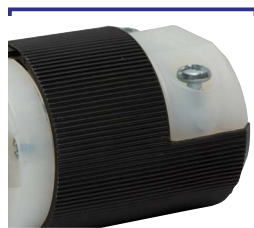
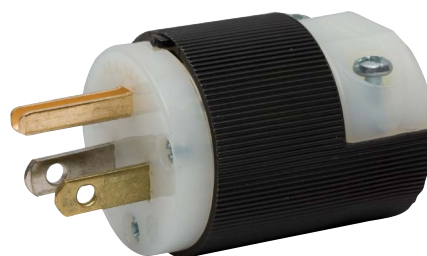
Features and Benefits

Insulgrip® 15 and 20 Ampere Plugs and Connector Bodies

Insulgrip products are synonymous with Hubbell's ongoing commitment to discovering ways to make products safer and last longer.

By encasing wiring devices in tough nylon housings, Insulgrip devices ensure high impact, heat, and chemical resistance while insulating current-carrying components from the user for maximum safety.

- The Insulgrip's cord gripping design clamps conductors, not just the cable jacket, making it the industry's most powerful cord grip with superior strain relief.
- Each Insulgrip device is manufactured with roomy, separate wiring chambers to insulate conductors and an individually molded face to keep out dust and debris that can cause contamination over time.



Housing Design

- Ribbed nylon housing provides a secure grip that's impact and chemical resistant
- Beveled housing prevents snagging when dragged across uneven surfaces
- Individually molded face for each blade configuration keeps debris out of plug interior



Internal Design

- Powerful cord grips clamp on individual conductors and outer cord jacket to prevent strain on terminations
- Individual wiring terminals are completely enclosed in their own separate chambers



Cord Range

- Integral VARI-SIZE® insert adjusts to a wide range of cord sizes: .230"-.720" (5.8-18.3)
- VARI-SIZE® pointer set to "smaller than gauge" position. Cord diameter range is .230"-.360" (5.8-9.0). Accepts slotted and Phillips head drivers



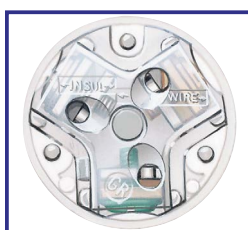
Assembly

- Multiple drive screw heads provide screwdriver versatility. Pocketed recess for cord grip screws deters slippage of the screwdriver



Identification

- Catalog number is visible on the device while in use for easy identification



Visual Verification

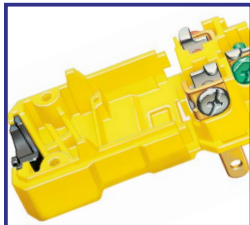
- Transparent angled wiring entrance holes permit "straight in" conductor insertion and quick visual verification for terminations

Straight Blade Devices

Features and Benefits

Valise® Plugs and Connector Bodies

Hubbell Valise plugs go together in seconds but stay together securely for reliable long-term operation. Eight loadbearing, locking lugs in the impact- and crush-resistant nylon body assure a positive grip. Devices feature patented “wire bundling” terminals that are easy to wire and provide positive, reliable terminations



Housing Design

- Removable cord inserts to accommodate a wide range of cord sizes, .220"-.660" (5.6-16.8)
- Powerful cord grips prevent conductor slippage and strain on wiring terminals
- Eight specially designed load bearing locking lugs insure a positive fit as the blade holder and sides are closed



Internal Design

- Unique patented clamp-type terminals provide a superior electrical connection by “bundling” the conductor strands when clamps are tightened
- Nylon webs are provided to make wiring quick and easy during assembly
- Two captive multiple drive assembly screws

Elastogrip® High Visibility Yellow Plugs and Connectors

Hubbell straight blade devices, female connector body, Elastogrip watertight, industrial/commercial grade, 2-pole 3-wire grounding, 15A 125V, NEMA 5-15R, yellow, single pack. Tough nylon body provides superior resistance in harsh abusive environments. IP55 suitability when closure plug inserted or when installed and used properly with mating watertight plug.



Watertight Plug Housing Design

- Thermoplastic elastomer housing resists weathering caused by ultraviolet rays and ozone better than rubber; also oil and chemical resistant
- Nylon compression nut keeps water and dust from getting into the body around the cord



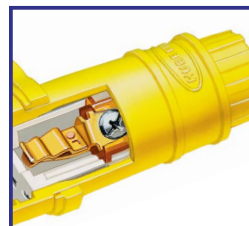
Watertight Plug Internal Design

- Three separate transparent wiring chambers allow for visual inspection
- Multiple drive “U-Drive” fast lead body assembly screws
- Neoprene bushing keeps water and dust out
- Color coded Kellems GOTCHA® rings provide increased cord retention



Watertight Connector Housing Design

- Closure plug seals connector body when disconnected from plug
- Integral weatherproofing shroud seals connection between plug and connector



Watertight Connector Internal Design

- Pretensioned “bypass” design female contacts for abuse resistance and reliability
- Nylon compression nut keeps water and dust from getting into the body around the cord



Dust Tight Plug Housing Design

- Thermoplastic elastomer housing
- Powerful nylon cord grip prevents strain on terminals



Dust Tight Plug Internal Design

- Multiple drive “U-Drive” fast lead body assembly screws
- Dust and moisture seal keeps out liquids, metal filings and other foreign materials

IP20
SUITABILITY



Plugs

Insulgrip®

| Description | Cord Diameter | Catalog Number | |
|--|------------------------|---------------------|---------------------|
| Black and white nylon. | .230"-.720" (5.8-18.3) | HBL5266C | HBL5366C |
| Black and white, spring termination | .230"-.720" (5.8-18.3) | HBL5266CST | HBL5366CST |
| Blue and white nylon. | .230"-.720" (5.8-18.3) | HBL5266CBL | — |
| Black nylon extra large cord clamp. | .360"-.720" (9.1-18.3) | HBL5266EBK | HBL5366EBK |
| Black, spring termination | .230"-.720" (5.8-18.3) | HBL5266CBKST | HBL5366CBKST |
| Gray, spring termination | .230"-.720" (5.8-18.3) | HBL5266CGYST | — |
| Corrosion resistant yellow nylon. | .230"-.720" (5.8-18.3) | HBL52CM66C | HBL53CM66C |
| 8-position angle plug, black and white nylon. | .325"-.655" (8.3-16.6) | HBL5266CA | HBL5366CA |
| 8-position angle plug, transparent enclosure. | .325"-.655" (8.3-16.6) | HBL5266CAT | — |
| Anchor lock, black and white nylon. | .230"-.720" (5.8-18.3) | HBL5280C* | — |
| Anchor lock, corrosion resistant yellow nylon. | .230"-.720" (5.8-18.3) | HBL52CM80C* | — |
| Finger grip, black neoprene, combination screws. CSA only. | .31"-.43" (7.9-10.9) | HBL5921 | — |
| Fusible, black vinyl housing, slotted screws. CSA only. | .296"-.625" (7.5-15.9) | HBL5299 | — |

Elastogrip®

| Description | Cord Diameter | Catalog Number | |
|--|------------------------|-------------------|-------------------|
| Yellow elastomer, dust tight. IP20 SUITABILITY. | .300"-.655" (7.6-16.6) | HBL1447 | HBL1433 |
| Yellow elastomer, watertight. IP20 and IP55 SUITABILITY. | .300"-.655" (7.6-16.6) | HBL14W47** | HBL14W33** |
| Yellow elastomer, watertight. IP65, 66, 67 SUITABILITY. | .375"-.625" (9.5-15.9) | HBL14W47A | HBL14W33A |

IP20
SUITABILITY

Valise®

| Description | Cord Diameter | Catalog Number | |
|--|------------------------|--------------------|-------------------|
| Yellow nylon. | .220"-.660" (5.6-16.8) | HBL5965VY | HBL5364VY |
| Black nylon. | .220"-.660" (5.6-16.8) | HBL5965VBLK | HBL5364VBK |
| Gray nylon. | .220"-.660" (5.6-16.8) | HBL5965VGY | — |
| Orange nylon, sold in bulk pack of 50. | .220"-.660" (5.6-16.8) | HBL515PVO | — |
| Insulation displacement terminals, black nylon. | .230"-.360" (5.8-9.1) | HBL5966VBLK | — |
| Insulation displacement terminals, yellow nylon. | .230"-.360" (5.8-9.1) | HBL5966VY | — |

Note: *UL Component Listed only. Not for general use applications.

**Watertight plugs IP55 suitability when installed and used properly with mating Elastogrip watertight connector bodies.

Horsepower ratings listed are AC only.

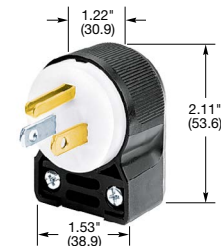
See page A-48 for accessories.



HBL5266C



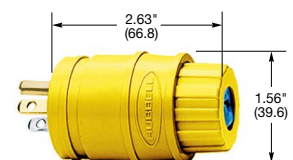
HBL5266CST



HBL5266CA



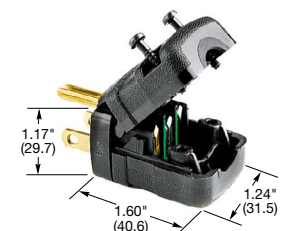
HBL1447



HBL14W47



HBL5965VY



HBL5966VBLK

Dimensions in Inches (mm)