

639846 Revision E, August 2019

Side-By-Side Mounting Kit
BSAMNT-SBS-1-2

GENERAL INFORMATION

- The BSAMNT-SBS-1-2 Mounting Kit allows mounting two 300mm wide antennas with 2 mount points side by side. Please visit the product page of this mounting kit on the commscope webpage for a list of antennas which are supported by this bracket.
- Mounting systems for cylindrical pipe installations (60 - 115m pipe diameter) for heavy duty applications.

PRE-INSTALLATION INSTRUCTIONS

- **Thoroughly read the directions included in this bulletin before starting to assemble parts.**
- Carefully remove all parts from the shipping boxes. Examine the antenna and hardware to ensure that all parts are enclosed and that there is no physical damage.
- Check to ensure that the antenna feed connector mates with the jumper cable.
- Verify that frequency range shown on the label on the back of the antenna matches the frequency range of the station equipment.
- Position the antennas so that the drain holes are directed down toward the ground.

GENERAL INFORMATION

- BSAMNT-SBS-1-2 kit is used to mount two antennas side-by-side. Kit's details as Figure 2.
- The BSAMNT-SBS-1-2 kit contains two 627281 mounting brackets and one BSAMNT-4 downtilt kit. Refer to Bulletin 639849-1, included with the BSAMNT-4 kit for proper antenna installation.

627281 MOUNTING BRACKET INSTALLATION

Do not remove, loosen, or adjust the antenna mounting plate(s).

Using the 627281 mounting brackets and hardware provided, assemble two antennas side-by-side. Tighten the M10 nut with torque 37 N.m. Refer to Figures 1 and 3.

(continued on page 2)

(Continued from page 1)

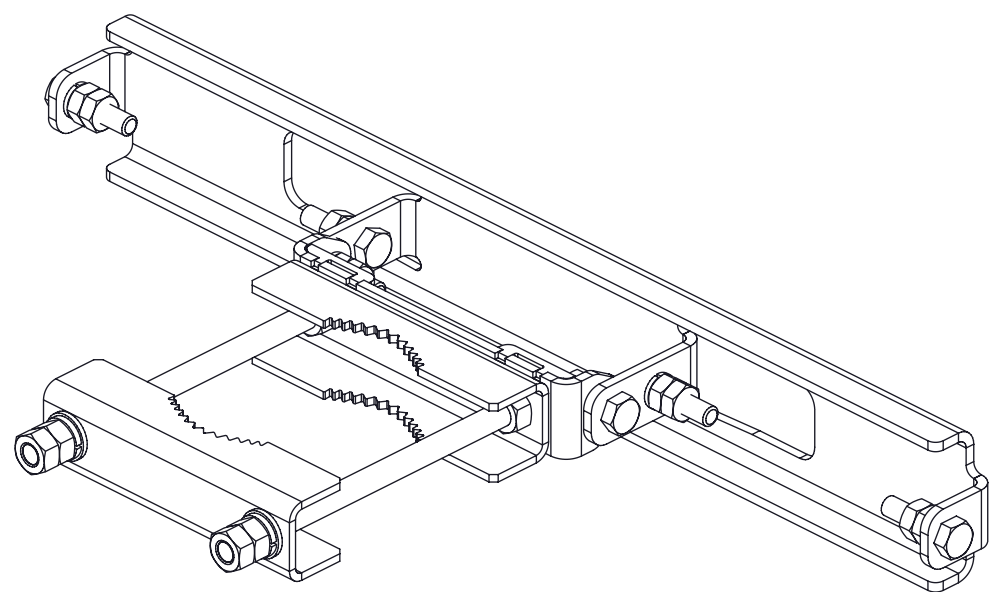
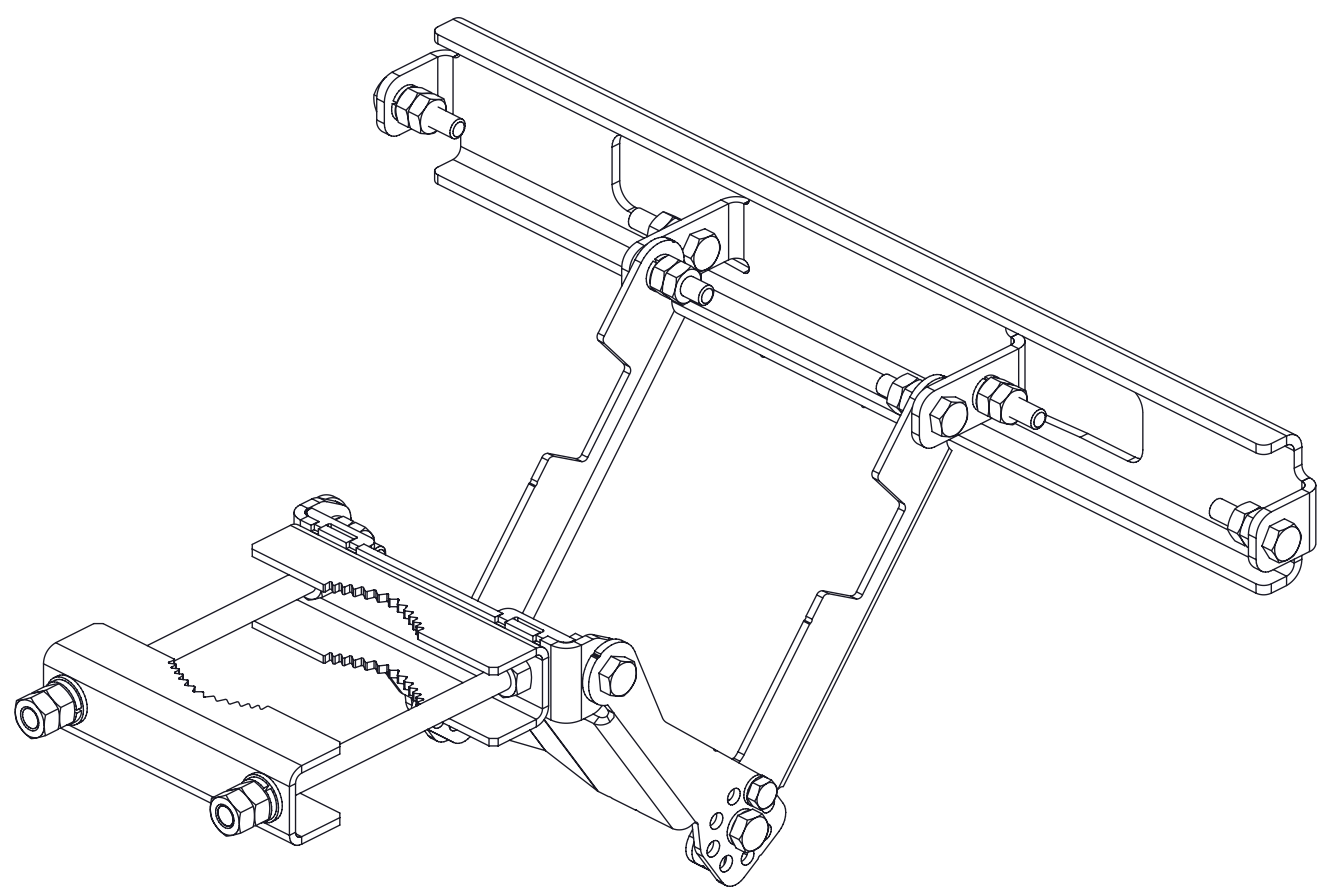
Attach a 627281 mounting bracket on the top and the bottom antenna plates respectively.



2 Antennas Mounted By 627281 Bracket

Figure 1. Methods for Antenna Assembly Using 627281 Mounting Brackets. (continued on page 3)

(Continued from page 2)



BSAMNT-SBS-1-2

Figure 2. BSAMNT-SBS-1-2 kit.

TORQUE : M10 = 37 N.m

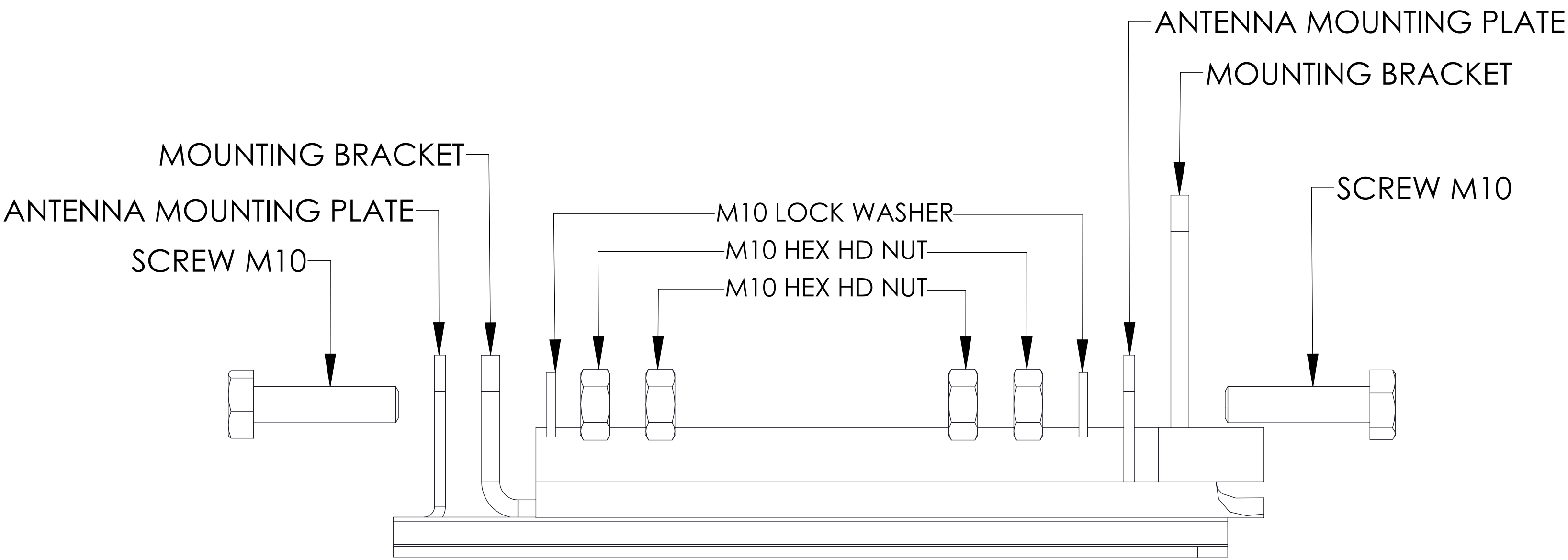


Figure 3. Attaching 627281 Mounting Bracket to Antenna.

(continued on page 4)

(Continued from page 3)

Refer to Bulletin 639849-1 for instructions on using the pipe mount and downtilt bracket(s) to attach the side-by-side antenna assembly to the mast. (Bulletin 639849-1 is included with the BSAMNT-4 kit.)

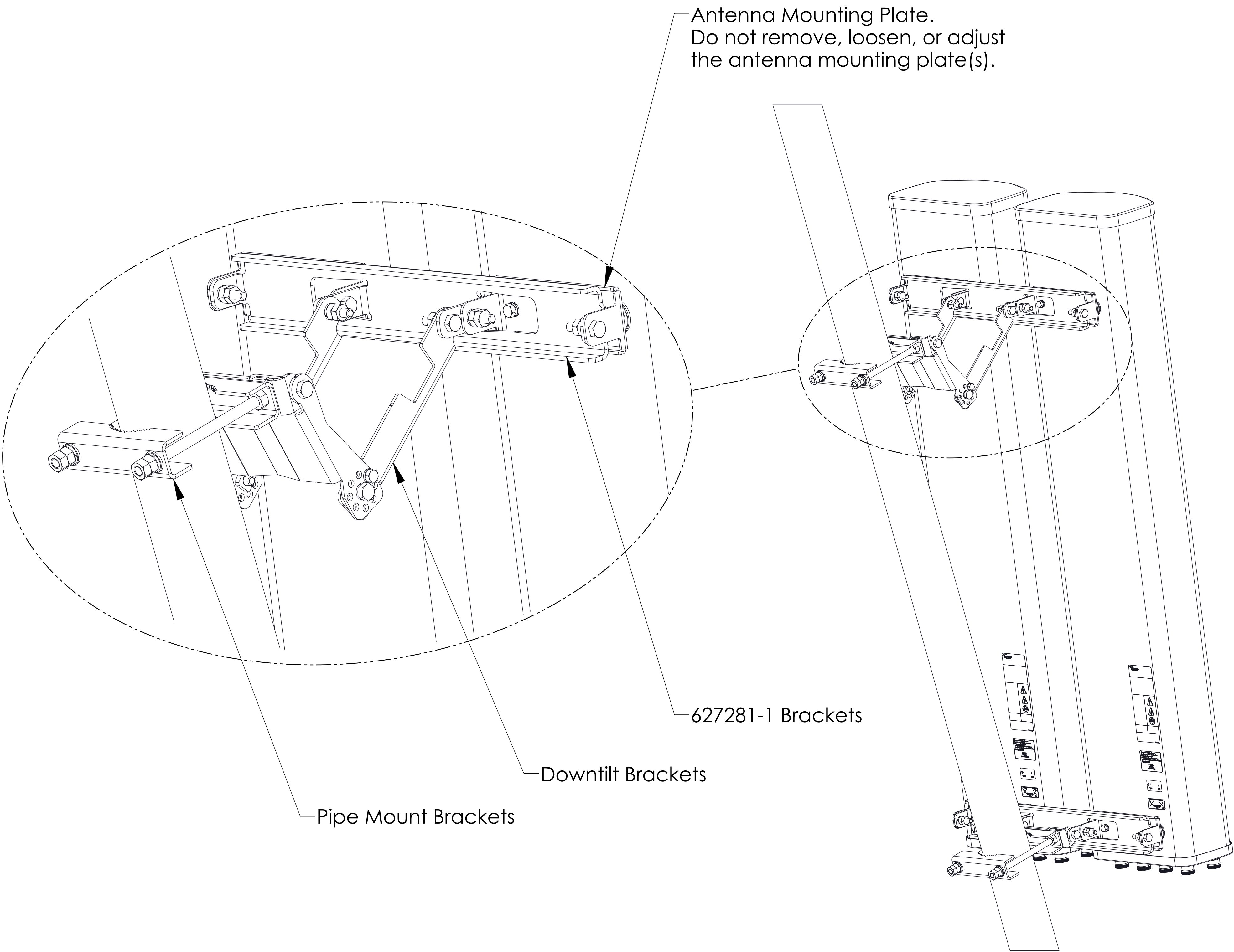


Figure 4. Antenna Assembly Attached to Mast Using BSAMNT-SBS-1-2 Mounting Kits.

(continued on page 5)

(Continued from page 4)

Remote Electrical
Tilt Connection



The AISG connector fitted to the antenna is designed to accept any AISG compliant cable assembly, commscope recommends hand tightening AISG mating connector only. Applied torque to the connector shall not exceed 1.5N*m.

RF Cable Connection



The female RF connectors fitted to the antenna are designed to fit jumper cables with standard related male RF connector. Tighten the RF connector coupling according to torque specification in antenna label, if the RF connectors are tightened beyond the recommend torque, the RF connection to the antenna may be damaged.

SAFETY NOTICE

The installation, maintenance, or removal of an antenna requires qualified, experienced personnel. CommScope installation instructions are written for such installation personnel. Antenna systems should be inspected once a year by qualified personnel to verify proper installation, maintenance, and condition of equipment.

CommScope disclaims any liability or responsibility for the results of improper or unsafe installation practices.

It is recommended that transmit power be turned off when the field installation is performed. Follow all applicable safety precautions as shown on this page.



Do not install near power lines. Power lines, telephone lines, and guy wires look the same. Assume any wire or line can electrocute you.



Do not install on a wet or windy day or when lightning or thunder is in the area. Do not use metal ladder.



Wear shoes with rubber soles and heels. Wear protective clothing including a long-sleeved shirt and rubber gloves.