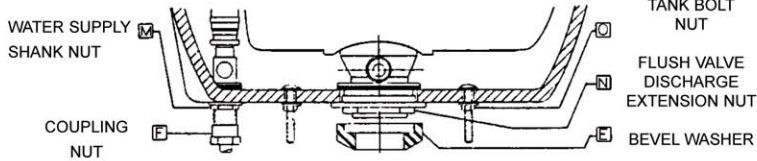


ULTRA FLUSH® UNIT CLOSET COMBINATIONS

DIRECTIONS FOR ASSEMBLING TANK TO BOWL

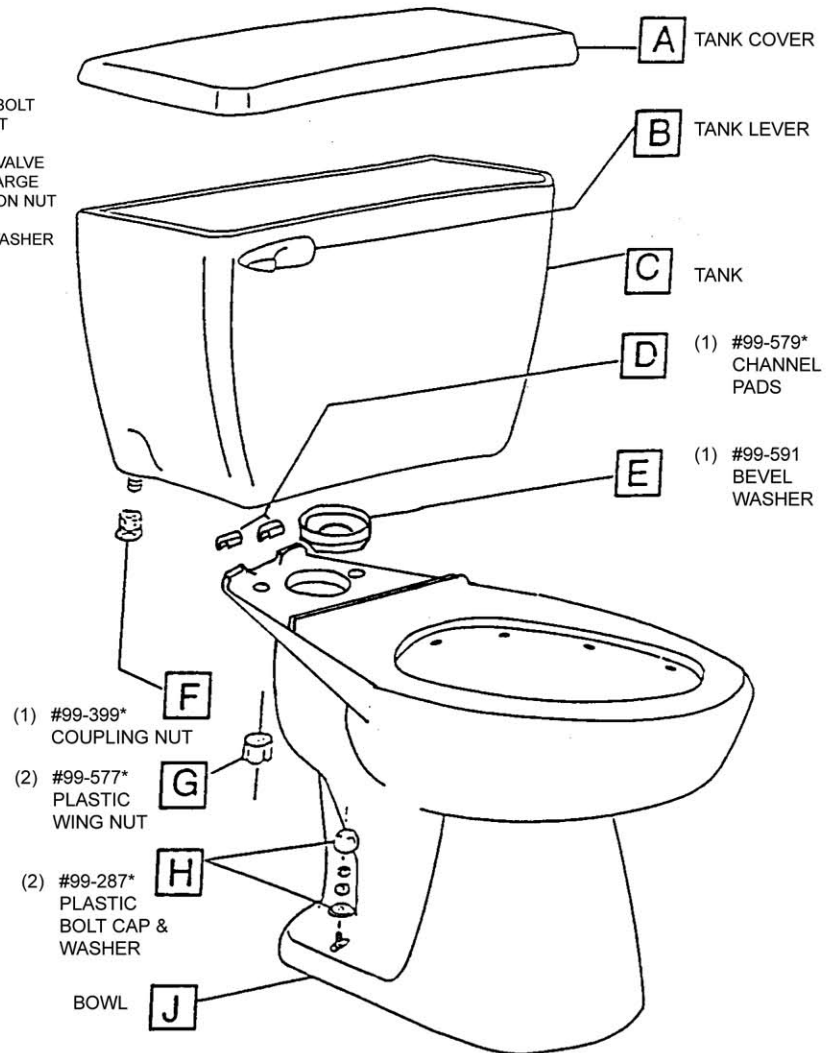
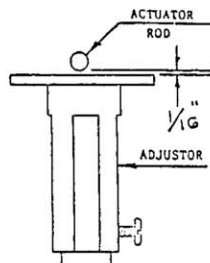
1. Before assembling tank (C) to bowl (J), check tightness of nuts on water supply shank (M), flush valve discharge extension (N), and tank bolts (O).



2. Assemble bevel washer (E) to flush valve discharge extension so that lock nut is enclosed in recess.
3. Place channel pads (D) on back of bowl ledge.
4. Place tank assembly in position, install plastic wing nuts (G) and tighten, compressing bevel washer (E) until contact is made tank to bowl at front and tank to channel pad (D) in rear and no rocking occurs. **DO NOT OVERTIGHTEN.**
5. Place bolt caps and washers (H) are provided to be used as indicated in the installation.
6. The water supply coupling nut (F) is provided to connect the water supply to the water supply shank. **HAND TIGHTEN ONLY! OVERTIGHTENING MAY SPLIT THE BALLCOCK AND WILL VOID THE WARRANTY!**
7. When you turn the water supply on, you will hear flow into the tank. When the flow stops (usually between 60 and 90 seconds), the flushometer/tank has filled and is ready to flush.
NOTE: Time must be allowed for this refill after every flush.
8. For best actuating performance, at rest there should be an approximate 1/16" gap between the actuator rod and the adjustor.

If it is necessary to make this adjustment, it should be done with water supply attached and unit pressurized.

Loosen set screw in top center and rotate adjustor to give the required gap and retighten set screw.



WARNING

DO NOT EXPOSE PLASTIC TRIM PARTS TO STRONG OXIDIZING AGENTS, CHLORINE, OR ACID LEVELS OF LOWER THAN 5.0 pH. SOME BOWL/TILE CLEANERS CONTAIN SUCH AGENTS.

GERBER®

PROFESSIONAL PERFORMANCE

www.gerberonline.com