

MULTI-HUB BOXES

Junction Boxes - Multi-Hub Boxes



XJAB



XJAC

No bottom hub



XJAD



XJAL

No bottom hub

FEATURES

- Designed for general wiring in hazardous locations. For pulling and splicing conductors. Serves as mounting outlets with use of appropriate fixture covers
- Available with dome cover for additional splicing room and mounting of various devices
- Bodies XJAB, XJAD and XJAX 26 thru 46 have two interior mounting bosses, which can be blind tapped.
- Bodies XJAC, XJAL and XJAT 26 thru 46 have four interior mounting bosses, which can be blind tapped.
- All bodies 570 thru 890 have solid back, can be tapped blind.

Catalog #	Conduit Size (in.)	Standard Pkg. Qty.	Standard Pkg. Weight (lbs.)
XJAB-26	½	10	9
XJAB-36	¾	10	10
XJAB-46	1	10	12
XJAB-570	1 ¼	5	25
XJAB-690	1 ½	4	22
XJAB-890	2	4	23
XJAC-26	½	10	9
XJAC-36	¾	10	10
XJAC-46	1	10	12
XJAC-570	1 ¼	5	26
XJAC-690	1 ½	4	21
XJAC-890	2	4	23
XJAD-36	¾	10	9
XJAD-46	1	10	15
XJAL-26	½	10	9
XJAL-36	¾	10	10
XJAL-46	1	10	12
XJAL-570	1 ¼	5	26
XJAL-690	1 ½	4	21
XJAL-890	2	4	23

Certifications

Class I, Groups C & D

Class II, Groups E, F & G

UL Standard 886

CSA Standard C22.2 No. 30

NEMA 4 Watertight Optional-Consult Factory



MULTI-HUB BOXES**Junction Boxes - Multi-Hub Boxes****XJAT**

No bottom hub

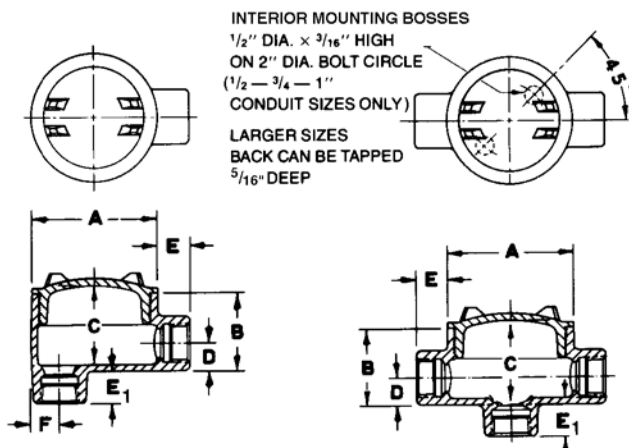
**XJAX**

No bottom hub

Catalog #	Conduit Size (in.)	Standard Pkg. Qty.	Standard Pkg. Weight (lbs.)
XJAT-26	1/2	10	10
XJAT-36	3/4	10	10
XJAT-46	1	10	13
XJAT-570	1 1/4	5	27
XJAT-690	1 1/2	4	21
XJAT-890	2	4	23
XJAX-26	1/2	10	12
XJAX-36	3/4	10	14
XJAX-46	1	10	15
XJAX-570	1 1/4	5	27
XJAX-690	1 1/2	4	21
XJAX-890	2	4	23

DIMENSIONS (INCHES)

Conduit Size (in.)	A	B	C	D	E	F	E1
1/2	3 1/2	2	2	5/8	7/8	1 1/16	7/8
3/4	3 1/2	2	2	3/4	7/8	1 3/16	7/8
1	3 1/2	2 5/16	2 5/16	7/8	1	1 5/16	1
1 1/4	6 3/8	3 3/16	3 3/4	1 3/32	1 1/16	1 13/32	1
1 1/2	6 3/8	3 3/16	3 3/4	1 9/32	3/4	1 19/32	1
2	6 3/8	3 13/16	4	1 1/16	3/4	1 7/8	1



Bottom hub on XJAB and XJAD styles only.

Certifications

Class I, Groups C & D

Class II, Groups E, F & G

UL Standard 886

CSA Standard C22.2 No. 30

NEMA 4 Watertight Optional-Consult Factory



MULTI-HUB BOXES

Junction Boxes - Thermocouple Head Box

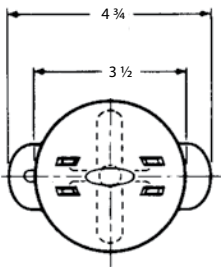


XJAY

FEATURES

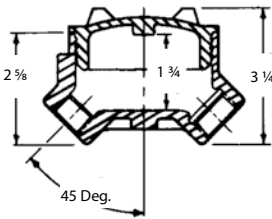
- Body has 1/2" NPT entrance for probe unit and one 3/4" NPT conduit entrance with conduit stop.
- Exterior pad 5/8" wide across the back between the conduit hubs
- Interior can be blind tapped into the back pad with screw spacing up to 2-3/4" for mounting terminal strips or connection blocks.
- outside boss on the 1/2" hub and the interior boss on the cover can Be blind tapped for screws for use with a retaining chain at additional cost. Consult factory.

Catalog #	Conduit Size (in.)	Standard Pkg. Qty.	Standard Pkg. Weight (lbs.)
XJAY	1/2"-3/4" (1) EA.	10	10



ACCESSORIES

Catalog #	Description
XJAO	O-Ring for NEMA 4 watertight
XJAYRC	Cover retaining chain



Compliances

- Class I, Group C & D
- Class II, Groups E, F & G
- Class III
- UL Standard 886
- CSA Standard C22.2 No. 30

Junction Boxes - Multi-Hub Boxes**XJA6****XJA6S****XJADC**

Catalog #	Description	Std. Pkg.	Std Pkg. Weight (lbs.)
XJA6	For ½" – ¾" – 1" Bodies	10	5
XJA8	For 1 ¼" – 1 ½" – 2" Bodies	5	11

Catalog #	Description	Std. Pkg.	Std Pkg. Weight (lbs.)
XJA6S	For ½" – ¾" – 1" Bodies	10	7

Entire body must be filled with sealing compound. NEC prohibits splices and taps in sealing fittings.

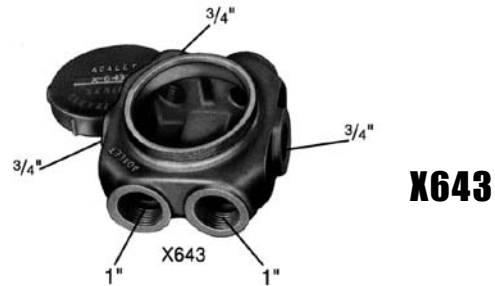
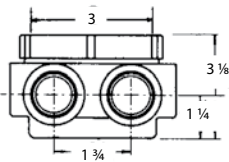
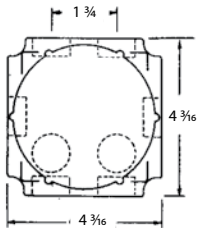
Catalog #	Description	Std. Pkg.	Std Pkg. Weight (lbs.)
XJADC	For ½" – ¾" – 1" Bodies Inside Depth 2 ¾"	10	9
XJAD4	For 1 ¼" – 1 ½" – 2" Bodies Inside Depth 4 ½"	1	5
XJAD6	For 1 ¼" – 1 ½" – 2" Bodies Inside Depth 6"	1	6
XJAD10	For 1 ¼" – 1 ½" – 2" Bodies Inside Depth 10"	1	8 ½
XJAD13	For 1 ¼" – 1 ½" – 2" Bodies Inside Depth 13"	1	9 ½
XJAO	O-Ring For NEMA 4 watertight For ½" – ¾" – 1" Bodies	1	—
XJTO	O-Ring for NEMA 4 watertight For 1 ¼" – 1 ½" – 2" Bodies	1	—

MULTI-HUB BOXES

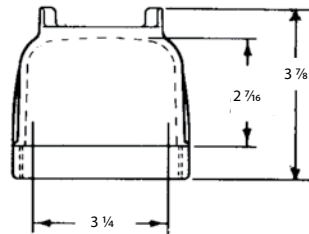
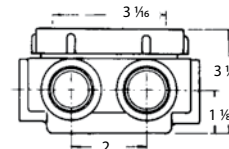
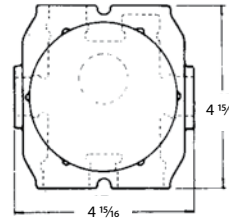
Junction Boxes - Multi-Hub General Purpose Boxes



X82/X83



X643



XDC*

*Not UL or CSA

Certifications

Class I, Group D
Class II, Groups E, F & G
UL Standard 886
CSA Standard C22.2 No. 30
NEMA 4 Watertight Optional-Consult Factory



Junction Boxes - Multi-Hub General Purpose Boxes

Catalog #	Conduit Size	Left/Right Sides	Number of Hubs			Std. Package	
			Top	Bottom	Back	Qty.	Weight
X82	½" & ¾"	One ½" Plugged	Two ½" Open	Two ½" One Plugged	Two ¾" Both Plugged	10	19 lbs.
X83	¾"	One ¾" Plugged	Two ¾" Open	Two ¾" One Plugged	Two ¾" Both Plugged	10	19 lbs.
X643	¾" & 1"	One ¾" Open	One ¾" Open, One Boss	Two 1" Open Undrilled	One Boss Undrilled	10	24 lbs.

COVERS ONLY			
Catalog #	Description	Std. Pkg.	Std Pkg. Weight (lbs.)
X82C	Blank	10	4
X83C	Blank	10	4
X643C	Blank	10	4
XDC	Dome	1	1
X8230	O-Ring for NEMA 4 watertight		

MULTI-HUB BOXES

Junction Boxes - Multi-Hub Boxes

FEATURES

- Designed for general wiring in hazardous locations.
- For pulling and splicing conductors.

Catalog #	Conduit Size	Number of Hubs				Std. Package	
		Each Side	Top	Bottom	Back	Qty.	Weight
XJLB2*	1/2"	None	None	1-1/2"	1-1/2"	10	10 lbs.
XJLB3	3/4"	None	None	1-3/4"	1-3/4"	10	10 lbs.
XJTB2*	1/2"	1 - 1/2"	None	1-1/2"	1-1/2"	10	9 lbs.

COVERS ONLY

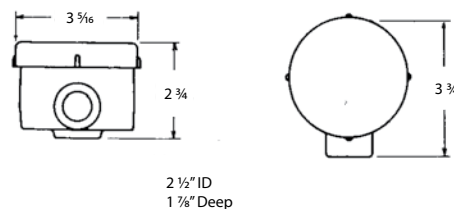
Catalog #	Description	Std. Pkg.	Std Pkg. Weight
XJU23	Blank	10	3 lbs.
XJUDC	Dome	10	8 lbs.

To order box with Dome Cover add XJUDC as suffix to catalog number required.

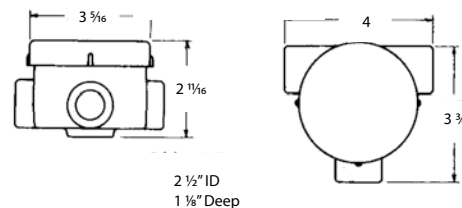
* XJLB_X - ATEX Certification - Consult Factory



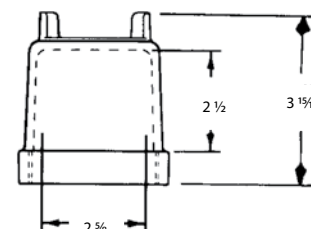
XJLB2



XJTB2



XJUDC

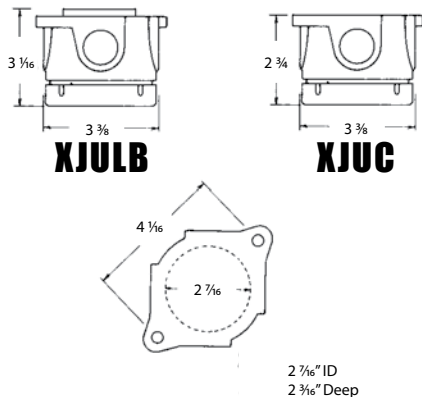
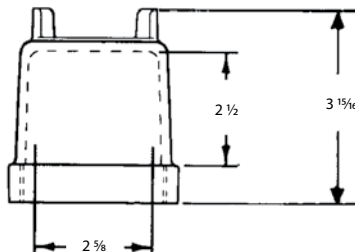


Certifications

Class I, Group D
Class II, Groups E, F & G
Class III
UL Standard 886
CSA Standard C22.2 No. 30



Junction Boxes - Multi-Hub General Purpose Boxes

**XJUDC****FEATURES**

- Designed for general wiring in hazardous locations.
- For pulling and splicing conductors these boxes also serve as fixture mounting outlets with appropriate cover.
- Boxes have 4 conduit entrances and furnished with 2 close-up plugs.
- XJULB has 5 conduit entrances and furnished with 3 plugs. Box Mounting hole size 5/16".

Catalog #	Conduit Size (in.)	Cover	Std. Pkg.	Std. Pkg. Weight (lbs.)
XJUC2*	1/2	Blank	10	11 1/2
XJUC3*	3/4	Blank	10	11 1/2
XJULB2	1/2	Blank	10	11 1/2
XJULB3	3/4	Blank	10	11 1/2

COVERS ONLY

Catalog #	Std. Pkg.	Std. Pkg. Weight (lbs.)
XJU23	10	3
XJUDC	10	8

To order box with Dome Cover add XJUDC as suffix to catalog number required.

*XJUC2 & XJUC3 are UL Listed and CSA Certified. Other items are in compliance with UL & CSA Standards

Certifications

Class I, Group D
 Class II, Groups E, F & G
 Class III
 UL Standard 886
 CSA Standard C22.2 No. 30

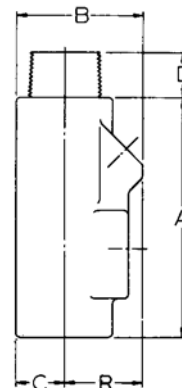


SEALING FITTINGS

Sealing Fittings - 25% Fill

FEATURES

- Sealing Fittings are required in Hazardous Locations and are used to isolate arc-producing devices in conduit and wiring systems, and to prevent the passage of explosive pressures from one area to another.
- FOR HORIZONTAL AND VERTICAL MOUNTING - Type XYB and XYBM are suitable for either horizontal or vertical mounting and are provided with threaded plugged openings into which fiber and cement can be placed to form effective seal. XYB has female ends for conduit entrance. The XYBM has female ends with a removable threaded nipple.



XYB-XYBM

FEMALE - FEMALE

Catalog #	Conduit Size (in.)	Oz. Req. for Ea. Sealing Fitting		Std. Package	
		Sealing Cement	Packing Fiber	Qty.	Weight lbs.
XYB-2	1/2	1	1/8	5	2.1
XYB-3	3/4	2	1/4	5	2.6
XYB-4	1	3	1/4	5	3.7
XYB-5	1 1/4	6	3/8	2	2.5
XYB-6	1 1/2	9	1/2	2	3.2
XYB-8	2	18	3/4	2	5.6
XYB-10	2 1/2	23	1 1/2	2	6.2
XYB-12	3	48	3 1/8	1	6.0
XYB-14	3 1/2	70	4 1/2	1	6.8
XYB-16	4	90	6	1	8.3

NOMINAL DIMENSIONS [inches]

Conduit Size	A	B	C	D (XYBM)	R (Turn Rad.)
1/2	3 19/32	1 13/16	5/8	1 1/16	1 3/16
3/4	3 25/32	2 1/16	3/4	1 5/16	1 5/16
1	4 3/8	2 5/16	7/8	1 5/16	1 7/16
1 1/4	5 5/32	2 13/16	1 1/16	1 1/16	1 3/4
1 1/2	5 11/16	3 3/16	1 3/16	1 3/16	2
2	6 13/16	3 7/8	1 1/2	1 7/16	2 3/8
2 1/2	7 1/2	4 1/2	1 7/8	1 3/8	2 11/16
3	9 9/16	5 1/2	2 3/16	1 7/8	3 3/16
3 1/2	9 1/2	6 1/8	2 3/8	2	3 11/16
4	9 9/16	6 1/2	2 5/8	2 1/8	3 7/8

*1/2", 3/4", 1" sizes Class I, Group B, C, D, Class II, E, F, G.

1 1/4", 1 1/2", 2", 2 1/2", 3", 3 1/2", 4" sizes Class I, Group C, D; Class II, E, F, G

MALE - FEMALE

Catalog #	Conduit Size (in.)	Oz. Req. for Ea. Sealing Fitting		Std. Package	
		Sealing Cement	Packing Fiber	Qty.	Weight lbs.
XYBM-2	1/2	1	1/8	5	2.2
XYBM-3	3/4	2	1/4	5	2.7
XYBM-4	1	3	1/4	5	3.8
XYBM-5	1 1/4	6	3/8	2	2.6
XYBM-6	1 1/2	9	1/2	2	3.4
XYBM-8	2	18	3/4	2	5.9
XYBM-10	2 1/2	23	1 1/2	2	6.8
XYBM-12	3	48	3 1/8	1	6.3
XYBM-14	3 1/2	70	4 1/2	1	7.3
XYBM-16	4	90	6	1	8.8

Certifications

Class I, Groups B*, C & D

Class II, Groups E, F & G

UL Standard 886

CSA Standard C22.2 No. 30



Sealing Fittings - 40% Fill**XYB-XYBM****FEATURES**

- Sealing Fittings are used for the same application as the standard Adalet sealing fitting but allow up to 40% wire fill in the fitting.

NOMINAL DIMENSIONS [inches]

Conduit Size	A	B	C	D (XYBM)	R (Turn Rad.)
1/2	3 25/32	2 1/16	3/4	1 5/16	1 5/16
3/4	4 3/8	2 5/16	7/8	1 5/16	1 7/16
1	5 5/32	2 13/16	1 1/16	1 1/16	1 3/4
1 1/4	6 13/16	3 7/8	1 1/2	1 7/16	2 3/8
1 1/2	7 1/2	4 1/2	1 7/8	1 5/8	2 11/16
2	9 9/16	5 1/2	2 3/16	1 7/8	3 5/16
2 1/2	9 1/2	6 1/16	2 3/8	2	3 11/16
3	9 9/16	6 1/2	2 3/8	2 1/8	3 7/8

*1/2", 3/4" sizes Class I, Group B, C, D, Class II, E, F, G.

1", 1 1/4", 1 1/2", 2", 2 1/2", 3" sizes Class I, Group C, D; Class II, E, F, G

FEMALE - FEMALE

Catalog #	Conduit Size (in.)	Oz. Req. for Ea. Sealing Fitting		Std. Package	
		Sealing Cement	Packing Fiber	Qty.	Weight lbs.
XYB-34	1/2	2	1/4	5	2.6
XYB-44	3/4	3	1/4	5	3.7
XYB-54	1	6	3/8	2	2.5
XYB-84	1 1/4	18	3/4	2	5.6
XYB-104	1 1/2	23	1 1/2	2	6.2
XYB-124	2	48	3 1/8	1	6.0
XYB-144	2 1/2	70	4 1/2	1	6.8
XYB-164	3	90	6	1	8.3

MALE - FEMALE

Catalog #	Conduit Size (in.)	Oz. Req. for Ea. Sealing Fitting		Std. Package	
		Sealing Cement	Packing Fiber	Qty.	Weight lbs.
XYBM-34	1/2	2	1/4	5	2.7
XYBM-44	3/4	3	1/4	5	3.8
XYBM-54	1	6	3/8	2	2.6
XYBM-84	1-1/4	18	3/4	2	5.9
XYBM-104	1-1/2	23	1-1/2	2	6.8
XYBM-124	2	48	3-1/8	1	6.3
XYBM-144	2-1/2	70	4-1/2	1	7.3
XYBM-164	3	90	6	1	8.8

Certifications

Class I, Groups B*, C & D
 Class II, Groups E, F & G
 UL Standard 886
 CSA Standard C22.2 No. 30



SEALING FITTINGS

Sealing Fittings - 25% Fill

FEATURES

- Types XY and XYM Fittings: provided with threaded plugged openings into which the sealing cement is poured. Sizes 1-1/4" x 1-1/2" have large plugged openings in the lower hub to facilitate packing fiber around the wires to form a dam. Type XYM's have removable threaded nipples. The two hubs are tapped simultaneously to assure alignment of the conduits, especially important to equipment manufacturers using short runs of conduit.
- FOR HORIZONTAL AND VERTICAL MOUNTING Type XYC Fittings: are for horizontal mounting only, with the cover opening in an upright position. XYCS fittings are for vertical or horizontal mounting, with removable threaded covers which can be turned to the desired Position for pouring in the sealing cement. The covers are interchangeable. The male-to-female types have removable threaded nipple.

Catalog #		Conduit Size	Oz. Req. for Ea. Sealing Fitting		Std. Package	
Fem- Fem	Male - Fem		Sealing Cement	Packing Fiber	Qty.	Weight lbs.
XY2	XYM2	1/2	1	1/8	25	10
XY3	XYM3	3/4	1	1/4	25	10
XY4	XYM4	1	2	1/4	25	12 1/2
XY5	XYM5	1 1/4	4	3/8	10	7 1/2
XY6	XYM6	1 1/2	5	1/2	10	10
XYC2	XYC2M	1/2	2	1/8	25	13
XYC3	XYC3M	3/4	2	1/4	25	13
XYC4	XYC4M	1	4 1/2	1/4	25	15
XYC5	XYC5M	1 1/4	8 1/2	3/8	10	10
XYC6	XYC6M	1 1/2	11 1/2	1/2	10	11
XYC8	XYC8M	2	13 1/2	3/4	10	12
XYC10	XYC10M	2 1/2	15	1 1/2	1	2
XYC12	XYC12M	3	31 1/2	3 1/8	1	3
XYC14	XYC14M	3 1/2	42 1/2	4 1/2	1	4
XYC16	XYC16M	4	51	6	1	5
XYC25	XYC25M	1/2	2	1/8	25	13
XYC35	XYC35M	3/4	2	1/4	25	13
XYC45	XYC45M	1	3	1/4	25	15
XYC55	XYC55M	1 1/4	6 1/2	3/8	10	10
XYC65	XYC65M	1 1/2	10	1/2	10	11
XYC85	XYC85M	2	12 1/2	3/4	10	12
XYC105	XYC105M	2 1/2	13 1/2	1 1/2	1	2
XYC125	XYC125M	3	29 1/2	3 1/8	1	3
XYC145	XYC145M	3 1/2	40	4 1/2	1	4
XYC165	XYC165M	4	48 1/2	6	1	5



XY 2-3-4



XYM 2-3-4



XY 5-6



XYM 5-6



XYC



XYCM



XYCS



XYCSM

Certifications

Class I, Group D
Class II, Groups E, F & G
UL Standard 886
CSA Standard C22.2 No. 30



Sealing Fittings - 40% Fill**XY 34, 44****XYM 34, 44****XY 54****XYM 54****XYC 34-164****XYC 34M-164M****XYC 34S-164S****XYC 34SM-164SM****FEATURES**

- Adalet 40% Fill Sealing Fittings are used for the same applications as the standard Adalet Sealing Fittings, but allow up to 40% wire fill in the fitting.

Catalog #		Conduit Size	Oz. Req. for Ea. Sealing Fitting		Std. Package	
Fem - Fem	Male - Fem		Sealing Cement	Packing Fiber	Qty.	Weight lbs.
XY34	XYM34	1/2	1	1/4	25	10
XY44	XYM44	3/4	2	1/4	25	12 1/2
XY54	XYM54	1	4	3/8	10	7 1/2
XYC34	XYC34M	1/2	2	1/4	25	13
XYC44	XYC44M	3/4	4 1/2	1/4	25	15
XYC54	XYC54M	1	8 1/2	3/8	10	10
XYC84	XYC84M	1 1/4	13 1/2	3/4	10	12
XYC104	XYC104M	1 1/2	15	1 1/2	1	2
XYC124	XYC124M	2	31 1/2	3 3/8	1	3
XYC144	XYC144M	2 1/2	42 1/2	4 1/2	1	4
XYC164	XYC164M	3	51	6	1	5
XYC34S	XYC34SM	1/2	2	1/4	25	13
XYC44S	XYC44SM	3/4	3	1/4	25	15
XYC54S	XYC54SM	1	6 1/2	3/8	10	10
XYC84S	XYC84SM	1 1/4	12 1/2	3/4	10	12
XYC104S	XYC104SM	1 1/2	13 1/2	1 1/2	1	2
XYC124S	XYC124SM	2	29 1/2	3 3/8	1	3
XYC144S	XYC144SM	2 1/2	40	4 1/2	1	4
XYC164S	XYC164SM	3	48 1/2	6	1	5

Certifications

Class I, Groups B*, C & D
 Class II, Groups E, F & G
 UL Standard 886
 CSA Standard C22.2 No. 30

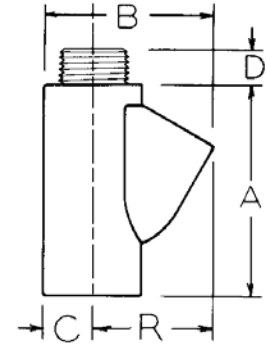


SEALING FITTINGS

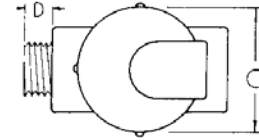
Sealing Fittings - 25% Fill

Catalog #		Conduit Size	Nominal Dimensions					R=Turning Radius Cover		
Fem- Fem	Male - Fem		A	B	C	D	E	Plain	Sealing	None
XY2	XYM2	1/2	3 1/16	2 7/16	3/4	1 1/16				1 13/16
XY3	XYM3	3/4	3 1/16	2 7/16	3/4	1				1 13/16
XY4	XYM4	1	3 3/4	2 15/16	1 5/16	1 5/16				2 1/8
XY5	XYM5	1 1/4	4 15/16	3 3/16	1 3/16	1 1/8				2 1/8
XY6	XYM6	1 1/2	4 7/8	3 7/16	1 5/16	1 5/16				2 1/4
XYC2	XYC2M	1/2	3 1/16	2 9/16	2 1/16	5/8	1 3/16	1 7/8		
XYC2S	XYC2SM	1/2	3 1/16	2 9/16	2 1/16	5/8	1 3/16		2 11/16	
XYC3	XYC3M	3/4	3 1/16	2 9/16	2 1/16	15/16	1 3/16	1 7/8		
XYC3S	XYC3SM	3/4	3 1/16	2 9/16	2 1/16	15/16	1 3/16		2 11/16	
XYC4	XYC4M	1	3 11/16	2 11/16	2 3/8	15/16	1	2 1/8		
XYC4S	XYC4SM	1	4 1/2	3 3/16	3 3/8	1 1/16	7/8		3 1/16	
XYC5	XYC5M	1 1/4	4 1/2	3 3/16	3 3/8	1 1/16	7/8	2 11/16		
XYC5S	XYC5SM	1 1/4	4 1/2	3 3/16	3 3/8	1 1/16	7/8		3 1/16	
XYC6	XYC6M	1 1/2	4 1/2	3 7/16	3 3/8	1 1/8	7/8	2 11/16		
XYC6S	XYC6SM	1 1/2	4 1/2	3 7/16	3 3/8	1 1/8	7/8		3 1/16	
XYC8	XYC8M	2	4 11/16	4	3 3/8	1 3/8	7/8	3		
XYC8S	XYC8SM	2	4 11/16	4	3 3/8	1 3/8	7/8		3 5/16	
XYC10	XYC10M	2 1/2	5 5/16	4 5/8	3 3/8	1 5/8	7/8	3 1/4		
XYC10S	XYC10SM	2 1/2	5 5/16	4 5/8	3 3/8	1 5/8	7/8		3 3/4	
XYC12	XYC12M	3	6 7/16	5 7/16	3 15/16	1 3/4	1 3/8	4		
XYC12S	XYC12SM	3	6 7/16	5 7/16	3 15/16	1 3/4	1 3/8		4 5/8	
XYC14	XYC14M	3 1/2	6 9/16	6 3/8	4 3/4	1 5/8	1 5/16	4 5/8		
XYC14S	XYC14SM	3 1/2	6 9/16	6 3/8	4 3/4	1 5/8	1 5/16		5	
XYC16	XYC16M	4	6 15/16	6 13/16	4 3/4	2	1 5/16	4 3/4		
XYC16S	XYC16SM	4	6 15/16	6 13/16	4 3/4	2	1 5/16		5 3/8	

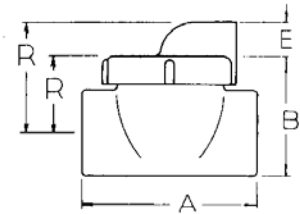
XYM



XYCSM



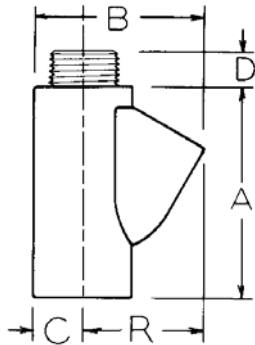
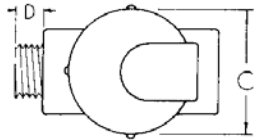
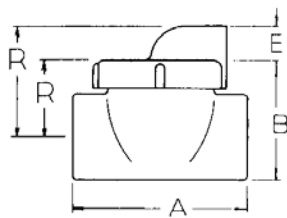
XYCS



Certifications

CSA Certified LR27991
UL Listed E10493



Sealing Fittings - 40% Fill**XYM****XYCSM****XYCS**

Catalog #		Conduit Size	Nominal Dimensions					R=Turning Radius Cover		
Fem- Fem	Male - Fem		A	B	C	D	E	Plain	Sealing	None
XY34	XYM34	1/2	3 1/8	2 7/16	3/4	1				1 13/16
XY44	XYM44	3/4	3 3/4	2 15/16	15/16	1 1/8				3 1/8
XY54	XYM54	1	4 15/16	3 3/8	1 3/8	1 1/8				2 1/8
XYC34	XYC34M	1/2	3 1/8	2 7/16	2 1/8	15/16	13/16	1 7/8		
XYC34S	XYC34SM	1/2	3 1/8	2 7/16	2 1/8	15/16	13/16		2 11/16	
XYC44	XYC44M	3/4	3 11/16	2 11/16	2 3/8	15/16	1	2 1/8		
XYC44S	XYC44SM	3/4	3 11/16	2 11/16	2 3/8	15/16	1		3 1/8	
XYC54	XYC54M	1	4 1/2	3 3/8	3 3/8	1 1/8	7/8	2 11/16		
XYC54S	XYC54SM	1	4 1/2	3 3/8	3 3/8	1 1/8	7/8		3 1/8	
XYC84	XYC84M	1 1/4	4 11/16	4	3 3/8	1 3/8	7/8	3		
XYC84S	XYC84SM	1 1/4	4 11/16	4	3 3/8	1 3/8	7/8		3 1/8	
XYC104	XYC104M	1 1/2	5 5/16	4 5/8	3 3/8	1 3/8	7/8	3 1/4		
XYC104S	XYC104SM	1 1/2	5 5/16	4 5/8	3 3/8	1 3/8	7/8		3 3/4	
XYC124	XYC124M	2	6 7/16	5 7/8	3 15/16	1 3/4	1 3/8	4		
XYC124S	XYC124SM	2	6 7/16	5 7/8	3 15/16	1 3/4	1 3/8		4 5/8	
XYC144	XYC144M	2 1/2	6 9/16	6 3/8	4 3/4	1 5/8	1 5/16	4 5/8		
XYC144S	XYC144SM	2 1/2	6 9/16	6 3/8	4 3/4	1 5/8	1 5/16		5	
XYC164	XYC164M	3	6 15/16	6 13/16	4 3/4	2	1 5/16	4 3/4		
XYC164S	XYC164SM	3	6 15/16	6 13/16	4 3/4	2	1 5/16		5 3/8	

Certifications

CSA Certified LR27991
UL Listed E10493



REMOVABLE PLUGS

Close-Up Plugs

FEATURES

- Tapered thread close-up plugs for explosionproof conduit entrances. Provides 5 full threads of engagement. Made of aluminum alloy, these plugs have screw-driver slots and fit practically flush when installed.

STYLE A - ALUMINUM ALLOY SCREW DRIVE			
Catalog #	Conduit Size (in.)	Standard Package Qty.	Weight (lbs.)
OX2	½	100	6 ¾
OX3	¾	100	10 ¼
OX4	1	50	9
OX5	1 ¼	50	12
OX6	1 ½	50	12
OX8	2	50	12
OX10	2 ½	15	20 ½
OX12	3	15	30
OX14	3 ½	15	40

STYLE B - PLATED STEEL SQUARE DRIVE			
Catalog #	Conduit Size (in.)	Standard Package Qty.	Weight (lbs.)
3-265	½	100	6 ¾
3-275	¾	100	10 ¼

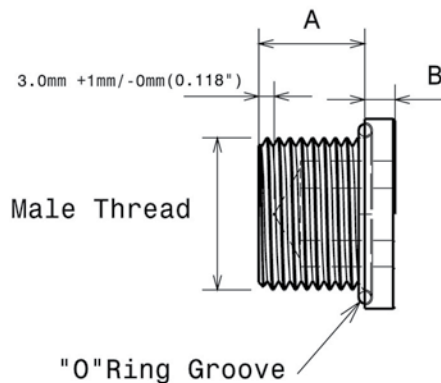
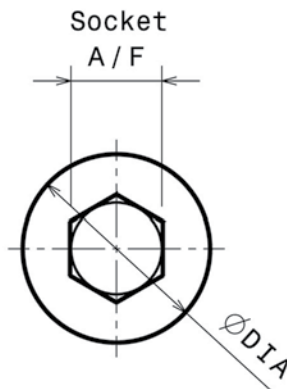
Dimensions are nominal (inches).



Style A



Style B

REMOVABLE PLUGS**Close-Up Plugs - Type 'U'****FEATURES**

- Used to seal unused cable gland or conduit entries in Ex approved enclosures, maintaining the hazardous location certification and the overall integrity of the installation.

PART NUMBER BUILD **U5 20 S NT**

BASE CATALOG NUMBER **U5 20 S NT**

O-RING
Nitrile (std.) - NT
Silicone - SC

MATERIAL
Nickel Plated Brass - N
316 Stainless Steel - SC

THREAD DESIGNATION

Metric	NPT	NPS	ISO	ISO	ET	PG
16	½	½S	½P	½T	½E	7
20	¾	¾S	¾P	¾T	¾E	9
25	1	1S	1P	1T	1E	11
32	1¼	1¼S	1¼P	1¼T	1¼E	13
40	1½	1½S	1½P	1½T	1½E	16P
50	2	2S	2P	2T	2E	21
63	2½	2½S	2½P	2½T	2½E	29
75	3	3S	3P	3T	3E	36
80	3½	3½S	3½P	3½T		42
85	4	4S	4P	4T		48
90	Note: Metric sizes M80 and larger are 2.0mm					
95	pitch is Standard, for 1.5mm pitch add *					
100						

Certifications

Class I, Div 1 Groups A, B, C & D II 2 GD Exd IIC/Exe II Category 2 & 3
AExd IIC / AExe II Class I, Zone 1 CSA Standard C22.2 No. 30



PULL ELBOWS

Short Radius Pull Elbows

FEATURES

- This versatile and inexpensive explosion-proof fitting with a threaded cover will easily and compactly handle 90° conduit runs. FL series have two female entrances.
- MFL series has one female entrance and one removable threaded nipple.

Catalog #	Conduit Size (in.)	Nominal Dimensions (in.)			Std. Package	
		A	B	C	Qty.	Weight lbs.
FL92	1/2	2 5/8	2 1/8	1 3/8	25	8
FL93	3/4	2 13/16	2 1/8	1 1/2	25	10 1/2
FL94	1	3 1/4	2 7/16	1 7/8	25	11
FL95	1-1/4	3 3/4	3 1/2	2 1/4	25	24
*FL96	1-1/2	4 5/8	4 3/16	2 5/8	25	30
MFL92	1/2	2 5/8	2 1/8	1 3/8	25	9
MFL93	3/4	2 13/16	2 1/8	1 1/2	25	12
MFL94	1	3 1/4	2 7/16	1 7/8	25	13
MFL95	1-1/4	3 3/4	3 1/2	2 1/4	25	26
*MFL96	1-1/2	4 5/8	4 3/16	2 5/8	25	34

* Fitting not UL Listed or CSA Certified

Certifications

Class I, Group D

Class II, Groups E, F & G

Class III

UL Standard 886

CSA Standard C22.2

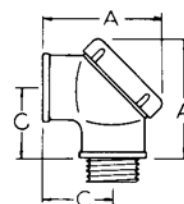
No. 30



FL



MFL



Sealing Cement / Packing Fiber

- **ADACO SEALING CEMENT** is the easiest-to-use sealing cement on the market. The powder is contained in a polyethylene bag within an outer container. To mix, remove the bag of powder, fill the outside container with water up to the marked "water line" and pour in the powder. Simple... no guesswork about how much water to use. The mixing container is right there...and clean. The largest unit package offered contains one pound of powder. The XSC-160 (10-pound quantity) consists of 10, one-pound packages (at the ten-pound price) so that every mix is correct. This cement has been especially prepared for use in Adalet Sealing Fittings. It is not an insulating compound, and is not affected by gasoline, alcohol, benzol, oils, acetone or lacquer solvents.
- **ADACO PACKING FIBER** is used with Adaco Sealing Cement for plugging conduit openings in fittings. Alumina Silica based long fiber non-asbestos for use as a packing at the hubs of sealing units to prevent the Sealing Cement in the liquid state from entering the conduit lines. The Fiber is tamped between the wires and the hub before the Sealing Cement is poured into the fitting.

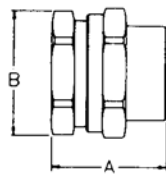
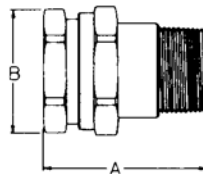


XSC

XAF

Catalog #	Description	Net Weight
XSC-8	ADACO No. 1	8 oz.
XSC-16	Sealing	16 oz.
XSC-160	Cement	10 lbs.
XAF-6	ADACO	1-1/2 oz.
XAF-24	Packing	6 oz.
XAF-64	Fiber	1 lb.

Conduit Unions

**XU****XUM****FEATURES**

- Explosionproof unions for use in conduit piping systems for ease of installation and removal of fittings, boxes and equipment enclosures in hazardous atmosphere areas.
- Parts are steel, zinc and clear dichromate plated for corrosion protection. Style XU has two female NPT threads. Style XUM has two female NPT threads and one plated threaded nipple.

Catalog #	Conduit Size (in.)	Connection	Std. Package Qty.	Weight lbs.
XU2	1/2"	Female-Female	50	19
XU3	3/4"	Female-Female	50	21
XU4	1"	Female-Female	25	13 1/2
XUM2	1/2"	Female-Male	50	22
XUM3	3/4"	Female-Male	50	26
XUM4	1"	Female-Male	25	16 1/2

NOMINAL DIMENSIONS [inches]

Catalog #	Conduit Size	A	B
XU	1/2"	1 3/4"	1 1/2"
	3/4"	1 3/4"	1 3/4"
	1"	1 15/16"	2"
XUM	1/2"	2 9/16"	1 1/2"
	3/4"	2 3/4"	1 3/4"
	1"	3"	2"

Certifications

Class I, Groups A, B, C & D
 Class II, Groups E, F & G
 UL Standard 886
 CSA Standard C22.2 No. 30



BUSHINGS

Bushings Type PEML With Locknut

TYPE PEML WITH LOCKNUT

Catalog #	Conduit Size (in.)	Nominal Dimensions (in.)			Std. Package	
		I.D.	O.D.	Height	Qty.	Weight (lbs. per 100)
PEML-2	1/2	5/8	1 1/8	5/8	50	2 1/2
PEML-3	3/4	1 1/16	1 5/16	5/8	50	3 1/2
PEML-4	1	1	1 5/8	25/32	50	6
PEML-5	1 1/4	1 3/8	2	25/32	25	6 1/2
PEML-6	1 1/2	1 5/8	2 1/4	25/32	25	9
PEML-8	2	2	2 3/4	25/32	10	11
PEML-10	2 1/2	2 7/16	3 1/4	1 1/16	5	30
PEML-12	3	3	3 7/8	1 1/16	5	34
PEML-14	3 1/2	3 1/2	4 3/8	1 1/16	5	39
PEML-16	4	4	5	1 1/16	2	56

A high strength resilient male bushing recommended to protect wires passing through metal walls, partitions and similar applications. Furnished with metallic locknuts.



TYPE PEML

Insulating Bushings Poly Precision Molded

POLY PRECISION MOLDED INSULATED BUSHINGS

Catalog #	Conduit Size (in.)	Nominal Dimensions (in.)			Std. Package	
		I.D.	O.D.	Height	Qty.	Weight (lbs. per 100)
PM-2	1/2	19/32	1 1/16	13/32	100	1
PM-3	3/4	25/32	1 5/16	13/32	100	1
PM-4	1	1	1 5/8	1/2	50	2
PM-5	1-1/4	1 5/16	2	1/2	25	3
PM-6	1-1/2	1 17/32	2 7/32	9/16	25	3
PM-8	2	1 31/32	2 21/32	9/16	10	6
PM-10	2-1/2	2 5/16	3 3/16	5/8	5	11
PM-12	3	2 7/8	3 15/16	11/16	5	14
PM-14	3-1/2	3 5/16	4 7/16	11/16	5	22
PM-16	4	3 25/32	4 29/32	11/16	5	23
*PM-20	5	4 13/16	6 3/16	31/32	2	40

A rugged, high strength molded bushing for general use on rigid conduit connectors and similar installations.

Listed by Underwriters Laboratories Inc. for 105° C (221° F). Meets all requirements of National Electrical Code for insulating bushings.



TYPE PM

Certifications

UL Listed



*PM-20 not UL Listed

Sali Insulating Bushings

Superior ADALET Laminated Insulation



FEATURES

- Sali bushings are machined from paper laminated phenolic material and comply with NEMA-X phenolic material specifications.
- 11,000 psi tensile
- 17,000 flexural
- 450v/mil dielectric
- Heat resistance - 150° C, continuous
- Moisture absorption - 1/2 of 1%
- Listed by Underwriters Laboratories for your quality assurance.
- Sali bushings have been repeatedly proved in a wide variety of applications over a 25 year period.

TYPE PE-FEMALE-DEEP-THREADED

Catalog #	Conduit Size (in.)	Nominal Dimensions (in.)			Std. Package	
		I.D.	O.D.	Height	Qty.	Weight (lbs. per 100)
PE-2	1/2	5/8	1 1/8	5/8	50	1 1/2
PE-3	3/4	13/16	1 5/16	5/8	50	2
PE-4	1	1	1 5/8	25/32	50	3 1/2
PE-5	1 1/4	1 3/8	2	25/32	25	4 1/2
PE-6	1 1/2	1 5/8	2 1/4	25/32	25	5 1/2
PE-8	2	2	2 3/4	25/32	10	7 1/2
PE-10	2 1/2	2 7/16	3 1/4	1	5	12
PE-12	3	3	3 7/8	1 1/16	5	16
PE-14	3 1/2	3 1/2	4 3/8	1 1/16	5	19
PE-16	4	4	5	1 1/16	2	24

Recommended for rigid conduit or in combination with male type PEM bushing when maximum thread engagement is required.

Certifications

UL Listed E10016



BUSHINGS

Sali Insulating Bushings Superior ADALET Laminated Insulation

FEATURES

- Sali bushings are machined from paper laminated phenolic material and comply with NEMA-X phenolic material specifications.
- 11,000 psi tensile
- 17,000 flexural
- 450v/mil dielectric
- Heat resistance - 150° C, continuous
- Moisture absorption - 1/2 of 1%
- Listed by Underwriters Laboratories for your quality assurance.
- Sali bushings have been repeatedly proved in a wide variety of applications over a 25 year period.



TYPE PET



TYPE PEM

TYPE PET-FEMALE-SET SCREW THREADLESS

Catalog #	Conduit Size (in.)	Nominal Dimensions (in.)				Std. Package	
		I.D. 1	O.D.	Height	I.D. 2	Qty.	Weight (lbs. per 100)
PET-2	1/2	5/8	1 1/8	5/8	7/8	50	1 1/2
PET-3	3/4	13/16	1 5/16	5/8	1 1/16	50	2
PET-4	1	1	1 5/8	25/32	1 11/32	50	3 1/2
PET-5	1 1/4	1 3/8	2	25/32	1 11/16	25	4 1/2
PET-6	1 1/2	1 5/8	2 1/4	25/32	1-15/16	25	5 1/2
PET-8	2	2	2 3/4	25/32	2 13/32	10	7 1/2
PET-10	2 1/2	2 7/16	3 1/4	1	2 29/32	5	12
PET-12	3	3	3 7/8	1 1/16	3 17/32	5	14
PET-14	3 1/2	3 1/2	4 3/8	1 1/16	4 1/32	5	17
PET-16	4	4	5	1 1/16	4 17/32	2	25

For threadless rigid conduit on all free conduit terminals such as terminating behind or within switchboards, switchgear, etc.

TYPE PEM

Catalog #	Conduit Size (in.)	Nominal Dimensions (in.)			Std. Package	
		I.D.	O.D.	Height	Qty.	Weight (lbs. per 100)
PEM-2	1/2	5/8	1 1/8	5/8	50	1
PEM-3	3/4	13/16	1 5/16	5/8	50	1 1/2
PEM-4	1	1	1 5/8	25/32	50	2 1/2
PEM-5	1 1/4	1 3/8	2	25/32	25	3
PEM-6	1 1/2	1 5/8	2 1/4	25/32	25	4
PEM-8	2	2	2 3/4	25/32	10	6
PEM-10	2 1/2	2 7/16	3 1/4	1 1/16	5	10
PEM-12	3	3	3 7/8	1 1/16	5	14
PEM-14	3 1/2	3 1/2	4 3/8	1 1/16	5	16 1/2
PEM-16	4	4	5	1 1/16	2	21

A high strength resilient male bushing recommended to protect wires passing through steel cabinet walls, metal partitions and similar applications. For additional strength it is recommended this bushing be secured with type PE deep threaded female bushing.

Certifications

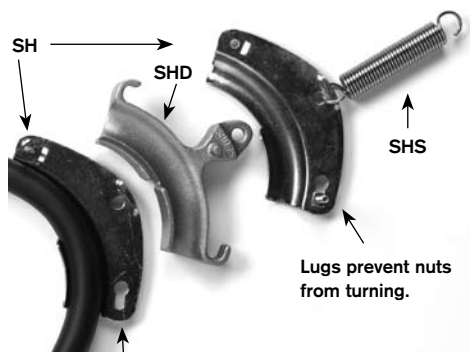
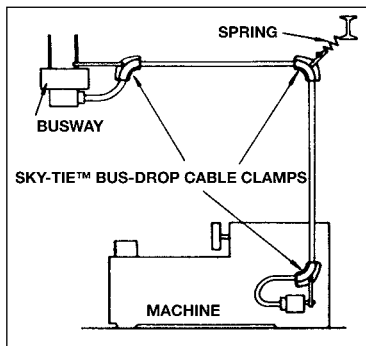
Type PET & SPE: UL Listed
Type PEM: UL Listed



Bus-Drop Cable Clamps - Sky-Tie™

**FEATURES**

- **Supports** cable up to 1-1/8" diameter. Uniform "lap" design of each clamp-half results in support along the entire quarter bend.
- **Anchors** cable for 90° angle transitions using a simple, two-piece construction of interchangeable clamp-halves.
- **Loops** excess cable for convenient handling and out-of-the-way storage, via the Sky-Tie™ SHD Duplex Converter. The SHD reduces the need to cut cable when machines are moved to new locations. The SHD converter simply fits between the two halves of the Sky-Tie™ SH cable clamps.
- Perfect For: Machine Tools, Portable Tools, Air Lines, Other heavy-cable support applications.
- **Sky-Tie™ Springs** Heavy-duty Sky-Tie™ Springs insure tautness of the cable, while absorbing vibrations and shocks. Each spring slips into the Sky-Tie™ clamp at its outside bend (or, if using the SHD Duplex, the converter's outside bend), and ties back to a structural member. Three spring models with maximum load capacities of 60, 70 and 160 pounds.



Keyhole slots permit assembly on cable without removal of bolts or threading of cable through fitting.

SKY-TIE SPRINGS

Catalog #	Max. Spring Load	Carton		Std. Package	
		Qty.	Weight lbs.	Qty.	Weight lbs.
SHS-50	60 lbs.	10	2.2	50	11
SHS-75	70 lbs.	10	2.7	50	14
SHS-1125	160 lbs.	10	11	10	11

SKY-TIE TWO-IN-ONE CABLE CLAMPS

Catalog #	Conduit Size (in.)	Typical Multi-Conductor Cable Size	Carton		Std. Package	
			Qty.	Weight lbs.	Qty.	Weight lbs.
SH-50	1/2-3/4	14/4 thru 8/4	10	3.5	50	18.5
SH-75	3/4 to 1 1/8	8/4 thru 3/4 or (1) 500 MCM	10	7	50	36
SH-1125	1 1/8 to 1 1/2	Special Applications	5	10	25	50

SKY-TIE "DUPLEX" COMPONENT

Catalog #	Conduit Size (in.)	Typical Multi-Conductor Cable Size	Carton		Std. Package	
			Qty.	Weight lbs.	Qty.	Weight lbs.
SHD-50	1/2 to 3/4	14/4 thru 3/4	10	3.25	50	17.25
SHD-75	3/4 to 1 1/2	8/4 thru 3/4 or (1) 500 MCM	10	7	50	36