

TERMINAL BLOKS™

Double Row 9/16" Centers

TB Series

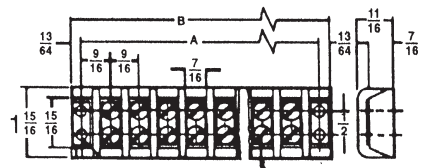


SPECIFICATIONS

- Temperature Rating: 208 °C.
- Voltage: 30AMP, 600V Max.

FEATURES

- Heavy duty construction with corrosion-resistant terminal plates ensures dependable, easy-access multiple terminations.
- Made from strong, glass-filled polyester.
- Screws are #8 stud size.
- Other sizes and styles available.
- Accommodates wire sizes 18-10 AWG.



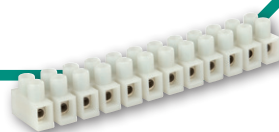
CAT. NO.	DIMENSIONS		STD. CTN. QTY.
	A	B	
TB3096-2	1.688	2.109	10
TB3096-4	2.812	3.250	10
TB3096-6	3.938	4.375	6
TB3096-8	5.062	5.500	4
TB3096-10	6.203	6.625	4
TB3096-12	7.328	7.750	3
TB3096-14	8.453	8.875	3

CONNECTOR BLOKS™

TERMINAL BLOKS™

Insulated Terminal Bloks™

ITB Series

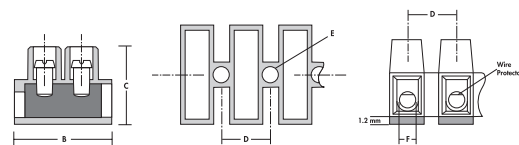


SPECIFICATIONS

- Rated UL 94V-2.
- Temperature Rating: 110 °C.
- Voltage: 300V.

FEATURES

- Nylon 66 housing ensures 'touchproof' safety.
- Recessed screws and tubular contacts provide additional safety and help prevent short circuits.
- Integrated stainless steel spring wire protectors prevent twisting and breaking of stranded wires during installation.
- Tubular contacts connect stripped solid or stranded un-terminated wire directly to each contact.
- Modular design allows for connector to be cut into smaller sections or stacked end-to-end.
- Brass metal alloy, nickel plated terminal insert.
- Zinc plated, yellow chromed screws.



CAT. NO.	NO. OF CIRCUITS	RATINGS	AMPS	WIRE RANGE	DIMENSIONS						STD. CTN. QTY.
					A	B	C	D	E	F	
ITB20-12	12	RU	20	22-12	3.787	0.669	0.570	0.315	0.114	0.110	50
ITB20-12	12	CSA	10	20-18	3.787	0.669	0.570	0.315	0.114	0.110	50
ITB30-12	12	RU	30	22-10	4.626	0.795	0.670	0.394	0.142	0.134	50
ITB30-12	12	CSA	20	18-14	4.626	0.795	0.670	0.394	0.142	0.134	50
ITB35-12	12	CRU	35	22-10	5.540	0.937	0.748	0.472	0.154	0.154	40
ITB50-12	12	CRU	50	20-8	6.220	1.008	0.992	0.531	0.173	0.189	25