

# Power Mod

## Type WML Lever Bypass Meter Stacks

METER  
CENTERS  
2

### Lever Bypass Meter Stacks

Lever Bypass meter stacks (type WML) are designed to meet the requirements of those utilities specifying lever bypass meter sockets for residential and commercial applications.

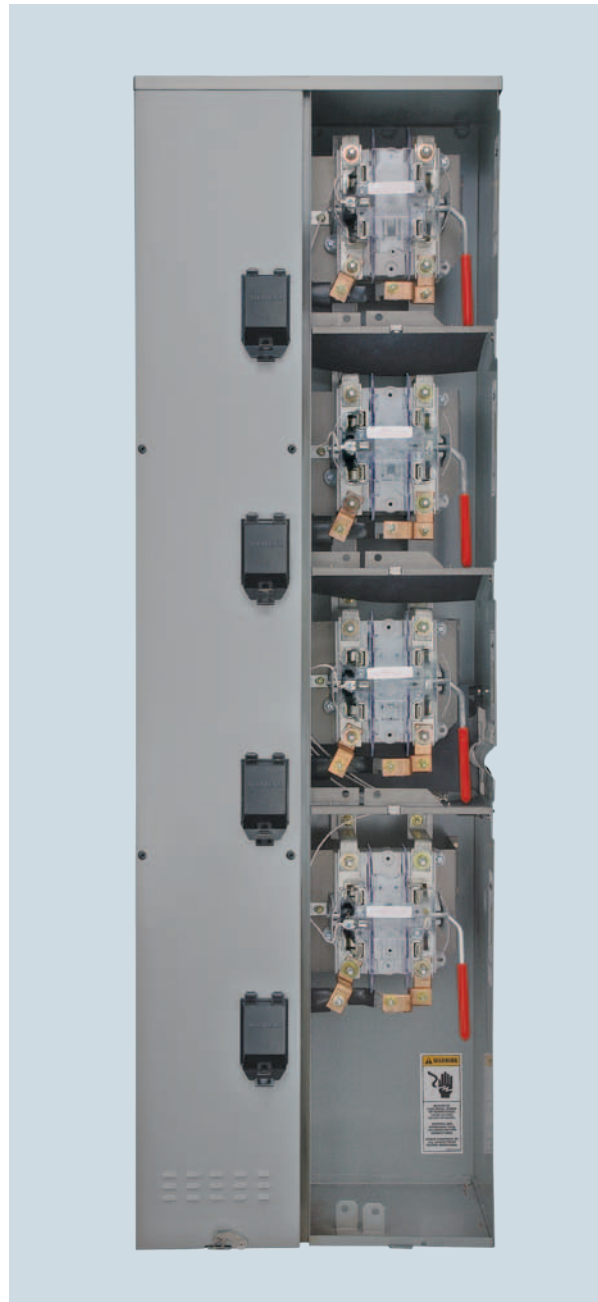
#### Features include:

- QuickSystem™ features<sup>①</sup>
- High-quality, time-proven Talon HQ sockets
- A line of 3-phase 100 Amp meter stacks to minimize tenant main cost
- Removable back knockout plate to facilitate wiring
- 225 Amp capability in single and three phase designs
- Up to 4 positions with 225 Amp tenant mains, up to 2 positions with 400 Amp tenant mains
- All lever bypass stacks are ringless.

#### Lever Bypass quick reference

- 125A 2-6 position
- 100A/225A 1-4 position
- 400A 1-2 position
- 1200A thru-bus rating
- UL Standard # UL67
- UL file # E27100
- AIC rating (25K, 35K, 65K and 100K)
- Voltage
  - Single phase 120/240V AC max
  - Three in single phase out 208Y/120V AC
  - Three Phase 240V AC max
- All swing latches and rivets are stainless steel.
- Indoor = NEMA 1 rated
- Outdoor = NEMA 3R rated
- G90 galvanized steel
- ANSI 61 paint
- Custom options available. Details on page 2-168.

Multi-family  
Metering



QuickConnect™  
Included

<sup>①</sup> QuickPhase™ is not applicable with non-field phaseable stacks (WML, 225A-400A, 3-phase-in/3-phase-out).

# Power Mod

## Type WML Lever Bypass Meter Stacks

- 100A/125A  
1-4 position
- 1200A thru-bus  
rating



2  
METER  
CENTERS

### Commercial Ringless Type Meter Stacks: Lever Bypass

Outdoor Catalog Number	Indoor Catalog Number	Meter Positions Per Stack	Breaker Provisions	Maximum AIC <sup>③</sup>	Dimensions (inches) <sup>①</sup>		
					Height	Width	Depth

#### 3-Phase, 4-Wire SN, Incoming And Outgoing, Lever Bypass, 7-Jaw Sockets<sup>⑤</sup>

Max. tenant breaker (Amps)①② : 100							
WML13100RJ②	ML13100RJ②	1	QP, MP-T, QPH, MP-HT, HQP, MP-MT	65k	27.75	23.50	9.00
WML23100RJ②	ML23100RJ②	2		65k	40.75	23.50	9.00
WML33100RJ②	ML33100RJ②	3		65k	49.75	23.50	9.00
WML43100RJ②	ML43100RJ②	4		65k	62.75	23.50	9.00
Max. tenant breaker (Amps)①② : 225							
WML13225RJ	ML13225RJ	1	QR2, QRH2, MQ, MQH, MQL, HQR2, HQR2H	100k	27.75	23.50	9.00
WML23225RJ	ML23225RJ	2		100k	40.75	23.50	9.00
WML33225RJ	ML33225RJ	3		100k	49.75	23.50	9.00
WML43225RJ	ML43225RJ	4		100k	62.75	23.50	9.00

Multi-family  
Metering

① Dimensions shown are representative of outside box dimensions and do not include allowances for mounting bumps, hubs, or hardware protrusions.  
② 3-pole breakers only.

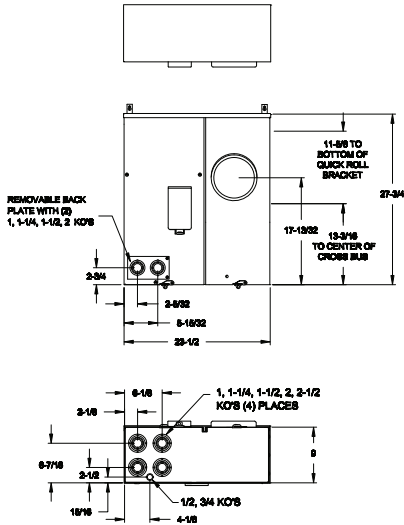
③ Max AIC determined by maximum AIC of tenant breakers when used in conjunction with a meter socket. Higher overall ratings may be achieved through approved series rating combinations.

④ Rated for use with 240/120V Delta systems.

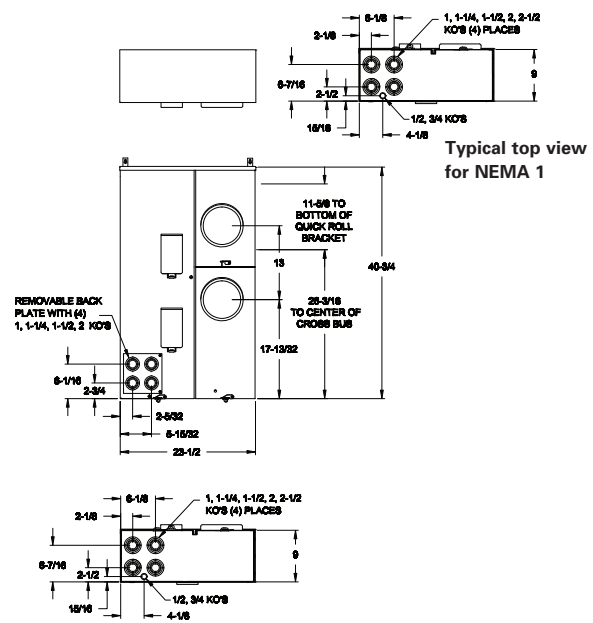
# Power Mod

## Meter Stacks: WML Lever Bypass Stacks Knockout Diagrams

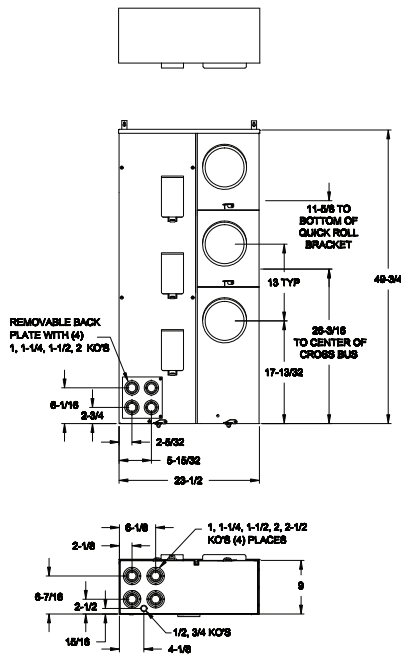
L-11	
WML13225RJ	ML13225RJ



L-12	
WML23225RJ	ML23225RJ



L-13	
WML33225RJ	ML33225RJ



L-14	
WML43225RJ	ML43225RJ

