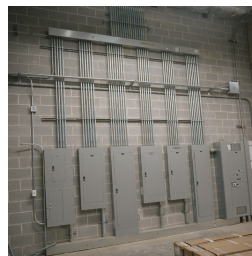
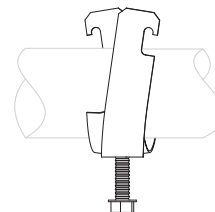
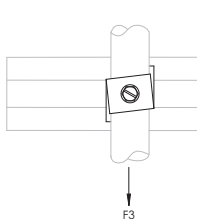
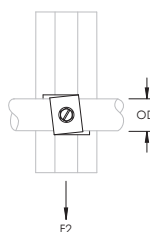
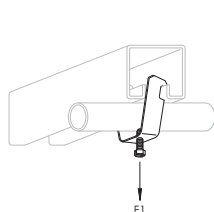


SCH2 Single Piece Strut Clamp for Cable/Conduit – SCH40B



- One-piece cable/conduit clamp with protective boot
- No screws or bolts to drop
- Requires only a screwdriver or nutdriver for installation
- Fits into open side of strut channel
- FM® Specification Tested (from 1/2" to 4" of EMT Conduit Size)



Part Number	SCH40B
Material	Steel
Finish	Electrogalvanized
Outer Diameter (OD)	2.00" – 2.38"
Rigid Conduit/Pipe Size	2"
Static Load 1 (F1)	350 lb
Ultimate Static Load 2 (F2)	75 lb
Ultimate Static Load 3 (F3)	50 lb
Certifications	cULus
Standard Packaging Quantity	25 pc
UPC	78285625240

FM is a registered certification mark of FM Approvals LLC, LTD. UL, UR, cUL, cUR, cULus and cURus are registered certification marks of UL LLC.

WARNING

nVent products shall be installed and used only as indicated in nVent's product instruction sheets and training materials. Instruction sheets are available at www.erico.com and from your nVent customer service representative. Improper installation, misuse, misapplication or other failure to completely follow nVent's instructions and warnings may cause product malfunction, property damage, serious bodily injury and death and/or void your warranty.

© 2021 nVent All rights reserved

nVent, nVent CADDY, nVent ERICO, nVent ERIFLEX and nVent LENTON are owned by nVent or its global affiliates.

All other trademarks are the property of their respective owners. nVent reserves the right to change specifications without prior notice.

