

Schedule 40

Innovator® Shower Drain SPECIFICATIONS



FEATURES:

- Includes Innovator test membrane; testable up to five floors (22 psi)
- No test plug or test ball required
- Available in Chrome, Brushed Nickel, Oil-Rubbed Bronze, and Matte Black finishes.
- Push down on the membrane to break the weld joint, then remove from drain. Membrane is larger than drain opening and will not fall down the drain.
- Protective cover snaps onto Metal Grid or Top Plastic Flange to eliminate debris falling down the drain

APPROVALS:

- Manufactured in compliance with ASME A112.18.2- 2015/CSA B125.2-2015.

PATENTS:

- www.watcomfg.com/patents

THREAD SIZE (Body):

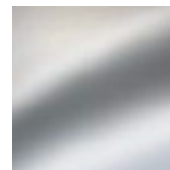
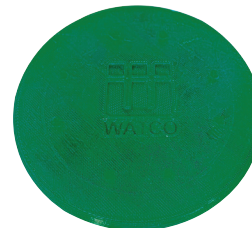
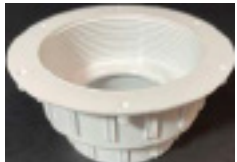
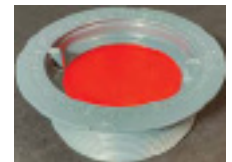
- 3/4" -10

Material: ☐ PVC ☐ ABS

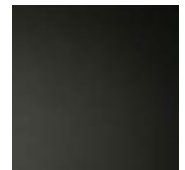
Heavy-duty snap-on grid



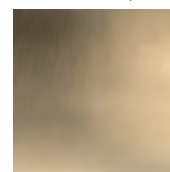
Heavy-duty snap-on
Protective cover



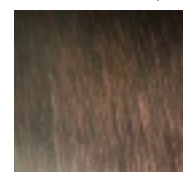
Chrome (CP)



Matte Black (WI)



Brushed Nickel (BN)



Oil-Rubbed
Bronze (BZ)

WATCO

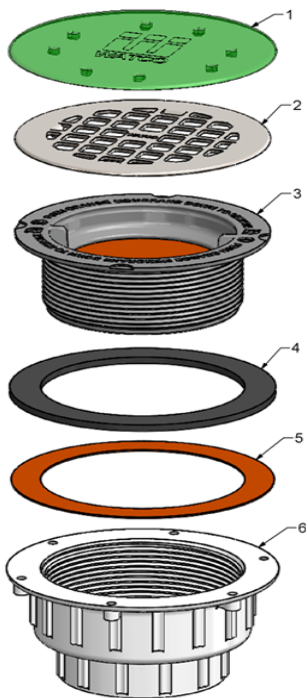


Always a step ahead

For More Information Contact:
WATCO Manufacturing Company
1220 South Powell Road
Independence, MO 64057-2724
Ph. 816-796-3900 • FAX 816-796-0875
www.watcomfg.com



Innovator® Shower Drain Parts List



Item	Part #	Description
1	11117	Shower Protective Cover
2	9300G-	Grid - Multiple Finishes
3	14047	Shower Drain Top Thread Flange
4	11567	Shower Drain Seal
5	11157	Shower Drain Slip Washer
6	11037	Shower Drain Receptor ABS
	14037	Shower Drain Receptor PVC

Part # and Finishes Available in the Innovator® Shower Drain:

Finish	Part #
PVC	
Chrome	9300-PVC-CP
Brushed Nickel	9300-PVC-BN
Oil Rubbed Bronze	9300-PVC-BZ
Wrought Iron (Matte Black)	9300-PVC-WI
ABS	
Chrome	9300-ABS-CP
Brushed Nickel	9300-ABS-BN
Oil Rubbed Bronze	9300-ABS-BZ
Wrought Iron (Matte Black)	9300-ABS-WI
Grid Only	
Chrome	9300G-CP
Brushed Nickel	9300G-BN
Oil Rubbed Bronze	9300G-BZ
Wrought Iron (Matte Black)	9300G-WI
Shower Drain Rough In	
	930NG-PVC
	930NG-ABS

Roughing-In Dimensions

