



# 9/16" and 3/4" Hollow Sockets

## STREAMLINES OVERHEAD FASTENING APPLICATIONS

- Impact and drill-ready hollow socket design saves time and speeds up fastening applications over extra long bolts, studs and threaded rod
- 12 point socket provides easy fitment over 6 and 12-point fasteners
- Additional socket length provides better accessibility to nuts in hard to reach places
- Axial press-fit 1/4" hex shank provides greater durability and torsional strength compared to a one-piece hollow socket
- Smooth, chamfered inner well prevents shaft from biting and ruining threads for easy fastening and unfastening



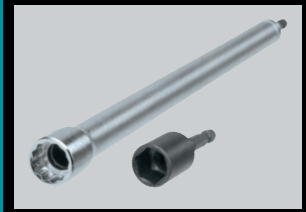
(Optional tool not included)

### SPEED



Hollow socket accelerates fastening over extra long bolts and threaded rod, no more hand-threading

### CONVENIENCE



Increased socket length provides better accessibility to nuts in hard to reach places

### COMFORT



Lightweight for easy overhead use and reduced wear on the user

### DURABILITY



Press-fit shank and corrosion resistant shaft for extra durability and long life

# EASY OVERHEAD FASTENING

# 9/16" and 3/4" Hollow Sockets

## FEATURES & BENEFITS

- Impact and drill-ready hollow socket design saves time and speeds up fastening applications over extra long bolts, studs and threaded rod
- 12 point socket provides easy fitment over 6 and 12-point fasteners
- Additional socket length provides better accessibility to nuts in hard to reach places
- Axial press-fit 1/4" hex shank provides greater durability and torsional strength compared to a one-piece hollow socket
- Smooth, chamfered inner well prevents shaft from biting and ruining threads for easy fastening and unfastening
- Corrosion resistant finish for long life
- Lightweight for easy overhead use and reduced wear on the user
- 1/4" hex shank works directly with both impact drivers and drill-drivers
- Ideal for overhead work on ducts, pipe, studs and threaded rod

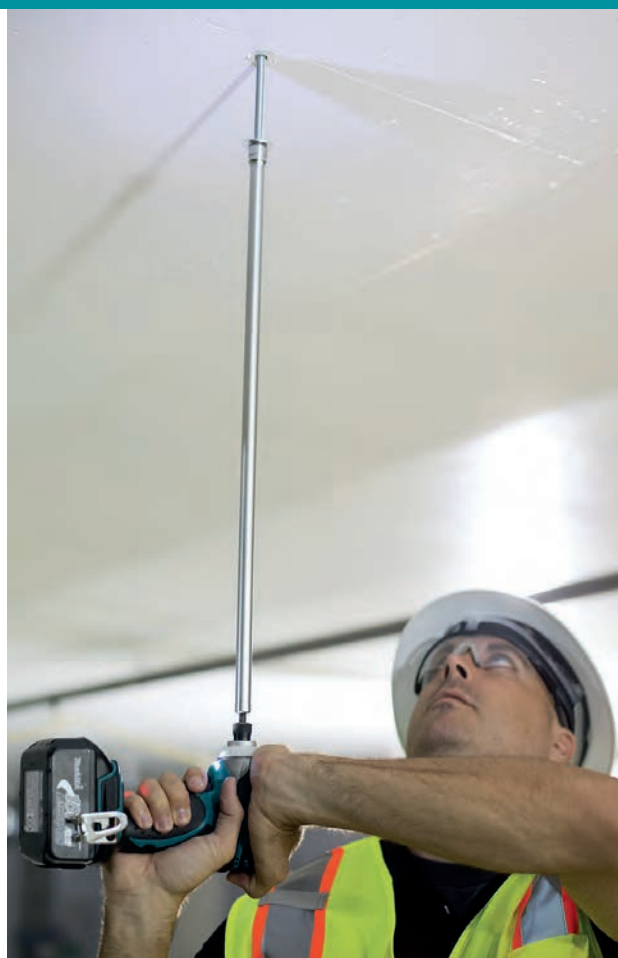
## SPECIFICATIONS

### 9/16" HOLLOW SOCKET FOR 3/8" ALL THREAD

Part No.	B-43290	B-43309	B-43315	B-43321	B-43337
Socket size	9/16"	9/16"	9/16"	9/16"	9/16"
Length	3"	6"	12"	18"	24"
Socket type	12 point	12 point	12 point	12 point	12 point
Shank	1/4" hex	1/4" hex	1/4" hex	1/4" hex	1/4" hex
Weight	0.1lbs.	0.2 lbs.	0.3 lbs.	0.4 lbs.	0.55 lbs.
UPC	443227	443234	443241	443258	443265

### 3/4" HOLLOW SOCKET FOR 1/2" ALL THREAD

Part No.	B-43343	B-43359	B-43365	B-43371	B-43387
Socket size	3/4"	3/4"	3/4"	3/4"	3/4"
Length	3"	6"	12"	18"	24"
Socket type	12 point	12 point	12 point	12 point	12 point
Shank	1/4" hex	1/4" hex	1/4" hex	1/4" hex	1/4" hex
Weight	0.2 lbs.	0.3 lbs.	0.45 lbs.	0.65 lbs.	0.85 lbs.
UPC	443272	443289	443296	443302	443319



Makita offers a wide variety of accessories. For a complete listing, please refer to the Makita General Catalog or visit our website at [makitatools.com](http://makitatools.com), or call 1-800-4MAKITA.

All specifications subject to change without prior notice. All models and accessories subject to stock on hand.  
The Makita Teal Color is the trade dress of Makita Corporation and is protected under common law and registered with the U.S. Patent and Trademark Office  
NTF-0614 MA-3/20-14