

150# Malleable Fittings • Spec Sheet

THAILAND



- Black & Galvanized
- Meets or exceeds all applicable ASTM and ANSI standards
- Stocked from 1/8" through 6" diameters
- 100% pressure tested before leaving the factory
- UL and FM approved

150# Malleable Fittings • Spec Sheet

THAILAND

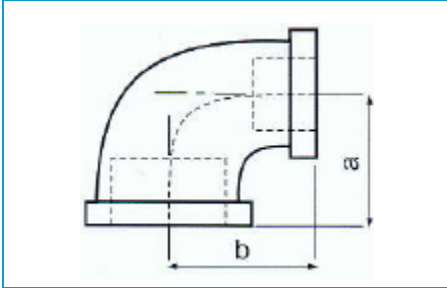
STANDARD SPECIFICATION (CLASS 150)

Standard	American	British	German
Design	ANSI/ASME B 16.3 ANSI/ASME B 16.14 ANSI/ASME B 16.39	BS EN 10242 BS 143 & 1256	DIN EN 10242
Thread	ANSI/ASME B 1.20.1	ISO 7, ISO 228 ANSI/ASME B 1.20.1	ISO 7, ISO 228
Material	ASTM A197	BS EN 1562	DIN EN 1562
Galvanizing	ASTM A153	BS EN ISO 1461	DIN EN ISO 1461
Type	BANDED	BANDED	BEADED

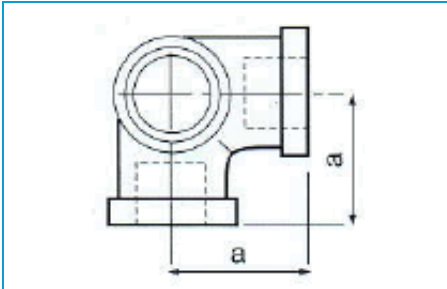


150# Malleable Fittings • Spec Sheet

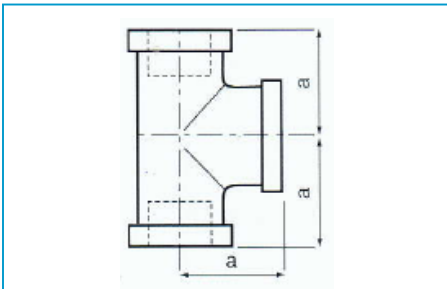
Reducing Elbow



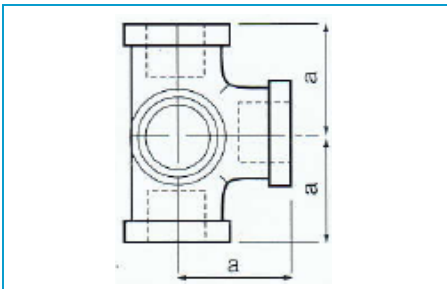
Side Outlet Elbow



Tee



Side Outlet Tee



THAILAND

Size	1/4x1/8	3/8x1/8	3/8x1/4	1/2x1/8	1/2x1/4	1/2x3/8	3/4x1/8	3/4x1/4	3/4x3/8	3/4x1/2
A	0.74	0.84	0.88	0.87	0.97	1.04	0.95	1.05	1.12	1.20
B	0.76	0.85	0.90	0.92	0.98	1.03	1.02	1.08	1.13	1.22
Size	1x1/4	1x3/8	1x1/2	1x3/4	1-1/4x1/2	1-1/4x3/4	1-1/4x1	1-1/2x1/2	1-1/2x3/4	1-1/2x1
A	1.11	1.18	1.26	1.37	1.34	1.45	1.58	1.41	1.52	1.65
B	1.22	1.27	1.40	1.45	1.53	1.62	1.66	1.66	1.75	1.80
Size	1-1/2x1-1/4	2x1/2	2x3/4	2x1	2x1-1/4	2x1-1/2	2-1/2x3/4	2-1/2x1	2-1/2x1-1/4	
A	1.82	1.47	1.60	1.71	1.90	2.02	1.73	1.87	2.04	
B	1.88	1.71	1.97	1.99	2.10	2.16	2.34	2.37	2.45	
Size	2-1/2x1-1/2	2-1/2x2	3x1-1/2	3x2	3x2-1/2	4x2	4x2-1/2	4x3		
A	2.16	2.39	2.28	2.52	2.83	2.72	3.19	3.30		
B	2.51	2.60	2.81	2.89	2.99	3.49	3.59	3.60		

Size	1/2	3/4	1	1-1/4	1-1/2	2
A	1.10	1.30	1.50	1.77	1.97	2.29

Size	1/8	1/4	3/8	1/2	3/4	1
A	0.69	0.81	0.95	1.12	1.31	1.50
Size	1-1/4	1-1/2	2	2-1/2	3	4
A	1.75	1.94	2.25	2.70	3.08	3.79
Size	5	6				
A	4.50	5.13				

Size	1/2	3/4	1	1-1/4	1-1/2	2
A	1.10	1.30	1.50	1.77	1.97	2.29