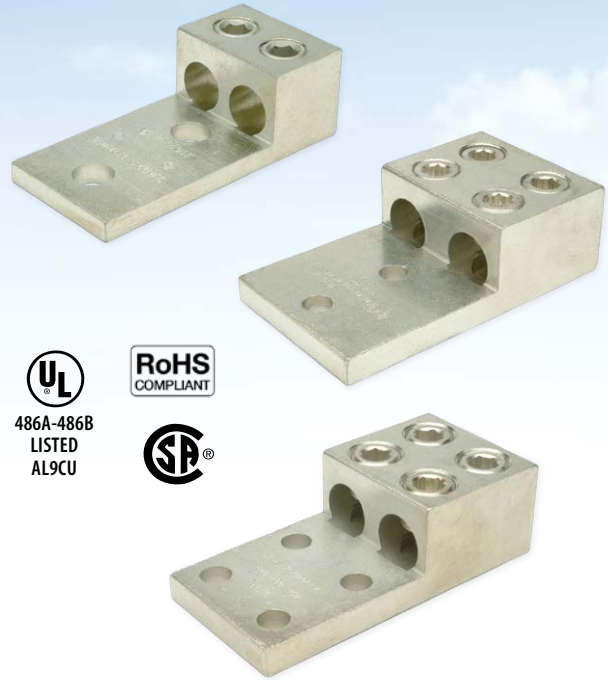


## Aluminum Dual Rated Lugs - Two or Four Hole Tongue

### Type L2A

For use with two copper or aluminum conductors

- Manufactured from high strength aluminum alloy extrusion
- Electro-tin plated to ensure minimum contact resistance and protection against corrosion when used with copper wire
- Two and four hole mounting pad allows for maximum surface contact in heavy duty applications
- Larger connector sizes utilize tandem set screws that provide superior mechanical performance\*
- Connectors are rated for 600 V, 90°C applications
- The use of oxide inhibitor is recommended for all aluminum terminations



486A-486B  
LISTED  
AL9CU

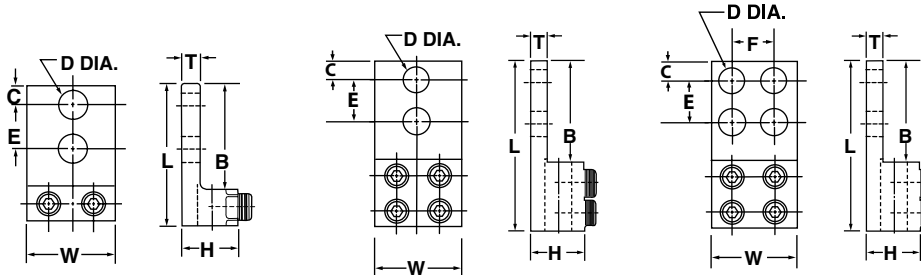


FIG. 1

FIG. 2

FIG. 3

CATALOG NUMBER	FIG. NO.	CONDUCTOR RANGE	FIGURE DIMENSIONS (IN.)									MTG. BOLT SIZE	HEX SIZE
			L	W	H	T	B	C	D (DIA.)	E	F		
L2A-350-2	1	6 Str. - 350 kcmil	4.13	1.91	1.25	.31	3.00	.63	.51	1.75	-	1/2	5/16
L2A-600-2	1	2 Str. - 600 kcmil	4.22	2.41	1.57	.44	3.31	.59	.51	1.75	-		1/2
*L2A-800-2	2	300 - 800 kcmil	4.62	3.19	1.94	.50	2.99	.59	.51	1.75	-		1/2
*L2A-800-4	3		5.75	3.57	1.94	.50	2.99	.59	.51	1.75	1.75		3/8
*L2A-1000-2	2	500 - 1000 kcmil	5.75	3.57	1.94	.50	2.99	.59	.51	1.75	-		3/8