



# T8

## 8.5T8/MAS/36-830/IF13/P/DIM 10/1

Our TLEDs are available in InstantFit (Type A / Type C) or MainsFit (Ballast bypass / Type B) versions. The InstantFit lamps work on a broad variety of ballasts and LED drivers. Only InstantFit has over 15,000 lamp & ballast combinations delivering even light output, energy savings and a long lifetime. Our MainsFit products feature a double-ended design, simplifying installation while a proprietary safety circuit minimizes a shock risk. Lamp sizes range from 2-foot to 8-foot and U-bend with a variety of lumen outputs.

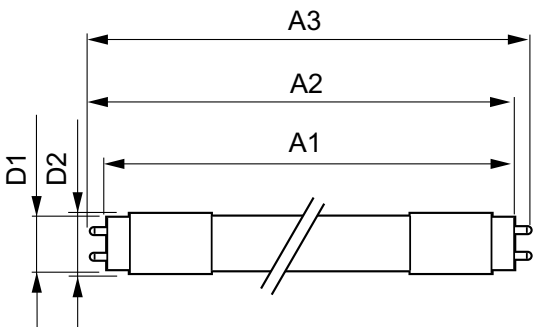
### Product data

|                                       |                                  |  |  |   |
|---------------------------------------|----------------------------------|--|--|---|
| <b>General Information</b>            |                                  | <b>Starting Time (Nom)</b>             |  | 0.5 s   |
| Base                                  | G13 [ Medium Bi-Pin Fluorescent] | <b>Warm Up Time to 60% Light (Nom)</b> |  | 0.5 s   |
| EU RoHS compliant                     | Yes                              | <b>UL Type</b>                         |  | Type A - works on ballast Type C - works with dedicated LED driver Type A+C - works with both ballasts and the LED driver |
| Nominal Lifetime (Nom)                | 70000 h                          | <b>Power Factor (Nom)</b>              |  | 0.9   |
| Switching Cycle                       | 50000X                           | <b>Voltage (Nom)</b>                   |  | 120-277, 347 V  |
| <b>Light Technical</b>                |                                  | <b>Temperature</b>                     |  |   |
| Color Code                            | 830 [ CCT of 3000K]              | <b>T-Ambient (Max)</b>                 |  | 45 °C   |
| Beam Angle (Nom)                      | 180 °                            | <b>T-Ambient (Min)</b>                 |  | -20 °C  |
| Initial lumen (Nom)                   | 1350 lm                          | <b>T-Storage (Max)</b>                 |  | 65 °C   |
| Color Designation                     | White (WH)                       | <b>T-Storage (Min)</b>                 |  | -40 °C  |
| Correlated Color Temperature (Nom)    | 3000 K                           | <b>T-Case Maximum (Nom)</b>            |  | 50 °C   |
| Luminous Efficacy (rated) (Nom)       | 152.00 lm/W                      | <b>Controls and Dimming</b>            |  |   |
| Color Consistency                     | <6                               | <b>Dimmable</b>                        |  | Yes   |
| Color Rendering Index (Nom)           | 80                               |  |  |   |
| LLMF At End Of Nominal Lifetime (Nom) | 70 %                             |  |  |   |
| <b>Operating and Electrical</b>       |                                  |  |  |   |
| Input Frequency                       | 20K to 120K Hz                   |  |  |   |
| Power (Rated) (Nom)                   | 8.5 W                            |  |  |   |

|                               |   |
|-------------------------------|---|
| Mechanical and Housing        |   |
| Product Length                | 36 in   |
| Approval and Application      |   |
| Energy Efficiency Label (EEL) | Not applicable                                |
| Energy Saving Product         | Yes   |
| Approbation Marks             | RoHS compliance UL certificate DLC compliance |
| Energy Consumption kWh/1000 h | - kWh   |
| Energy Certifications         | DLC Standard                                  |

|                                 |                                  |
|---------------------------------|----------------------------------|
| Product Data                    |                                  |
| Order product name              | 8.5T8/MAS/36-830/IF13/P/DIM 10/1 |
| EAN/UPC - Product               | 046677539856                     |
| Order code                      | 539858                           |
| Numerator - Quantity Per Pack   | 1                                |
| Numerator - Packs per outer box | 10                               |
| Material Nr. (12NC)             | 929001967504                     |
| Net Weight (Piece)              | 0.160 kg                         |
| Model Number                    | 9290019675                       |

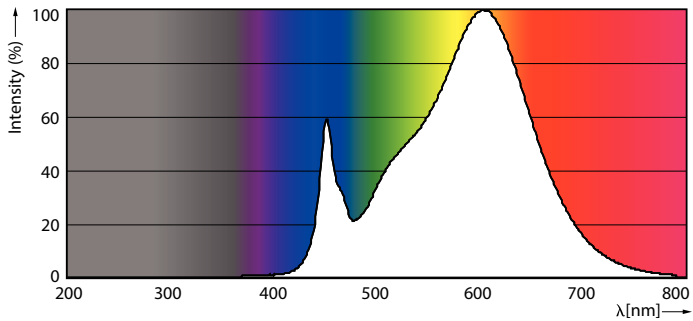
Dimensional drawing



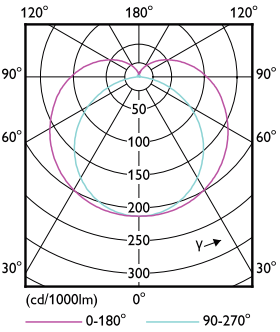
TLED IF MasterClass 3ft 1300lm 3000K

| Product                          | D1      | D2      | A1       | A2       | A3       |
|----------------------------------|---------|---------|----------|----------|----------|
| 8.5T8/MAS/36-830/IF13/P/DIM 10/1 | 25.7 mm | 26.3 mm | 893.4 mm | 900.5 mm | 907.6 mm |

Photometric data

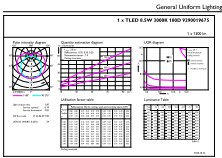


G13 3000K 1300lm



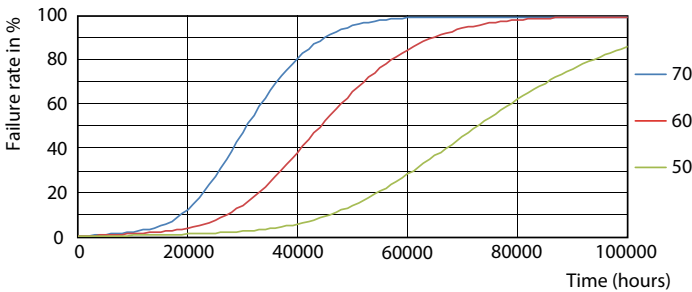
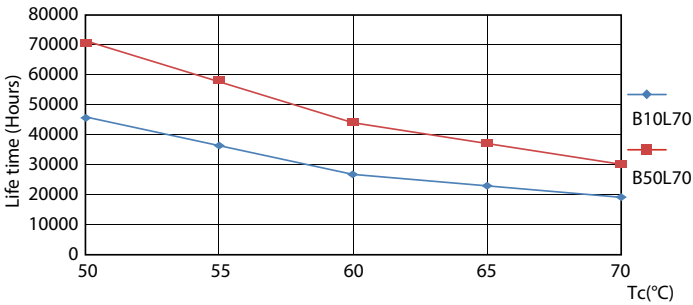
G13 4000K

Photometric data



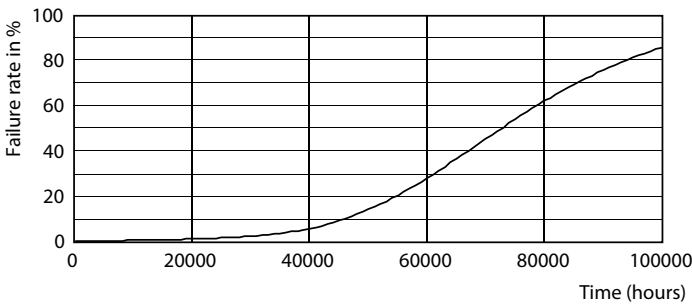
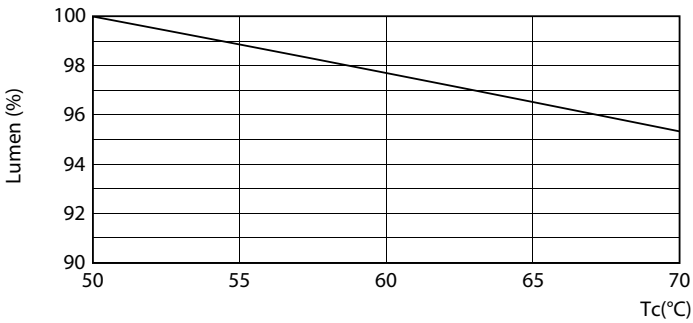
G13 3000K 1300lm

Lifetime



G13 4000K

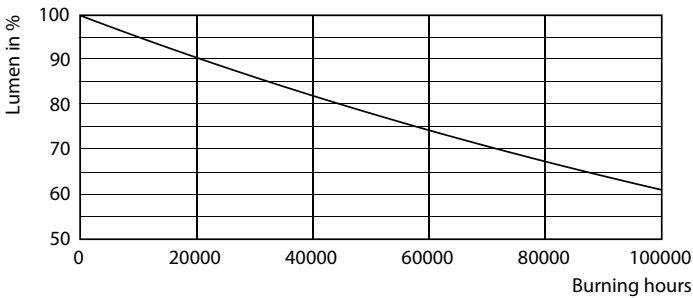
G13 4000K



G13 4000K

G13 4000K

Lifetime



G13 4000K

