



PL-C/T

5.5PL-C/LED/13V/840/IF5/P/4P 20/1

Philips PLED 4-pin & 2-pin lamps are an affordable LED solution to replace compact fluorescent lamps. The product provides a natural lighting effect for use in many lighting applications, and provides instant energy savings, making them an environmentally-friendly solution. Available as replacements for 13W, 26W and 32W compact fluorescent lamps.

Product data

General Information		Lamp Current (Min)		130 mA
Cap-Base	G24q	Wattage Equivalent		13 W
Nominal lifetime	50,000 hour(s)	Starting Time (Nom)		0.5 s
Switching Cycle	50,000	Warm-up time to 60% light		0.5 s
Lighting Technology	LED	Power Factor (Fraction)		0.9
Light Technical		Voltage (Nom)		14-60 V
Color Code	840 [CCT of 4000K]	UL Type		UL Type A
Beam Angle (Nom)	150 degree(s)	Temperature		
Luminous Flux	580 lm	T-Case Maximum (Nom)		70 °C
Color Designation	Cool White (CW)	Controls and Dimming		
Correlated Color Temperature (Nom)	4000 K	Dimmable		Yes
Luminous Efficacy (rated) (Nom)	105.00 lm/W	Mechanical and Housing		
Color Consistency	<6	Bulb Finish		Frosted
Color rendering index (CRI)	82	Bulb Material		Plastic
LLMF At End Of Nominal Lifetime (Nom)	70 %	Product Length		101.6 mm
Operating and Electrical		Bulb Shape		PL-C
Line Frequency	25000-100000 Hz	Net Weight (Piece)		0.058 kg
Input Frequency	25000-100000 Hz			
Power Consumption	5.5 W			
Lamp Current (Max)	280 mA			

Approval and Application

Energy Saving Product	Yes
Approval Marks	RoHS compliance UL certificate
Energy Consumption kWh/1000 h	- kWh
EU RoHS compliant	Yes
Ambient temperature range	-20 °C to 45 °C

Application Conditions

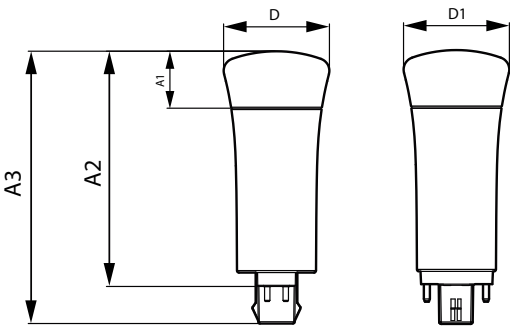
can it be used in closed luminaires	Yes
-------------------------------------	-----

Product Data

Order product name	5.5PL-C/LED/13V/840/IF5/P/4P 20/1
--------------------	-----------------------------------

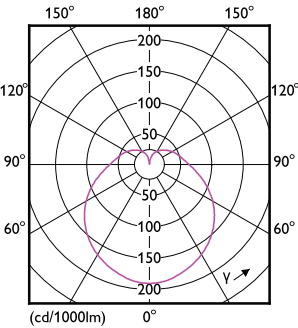
Full product name	5.5PL-C/LED/13V/840/IF5/P/4P 20/1
Order code	532465
Material Nr. (12NC)	929001886004
Numerator - Quantity Per Pack	1
EAN/UPC - Product/Case	046677532468
Numerator - Packs per outer box	20
EAN/UPC - Case	50046677532463

Dimensional drawing

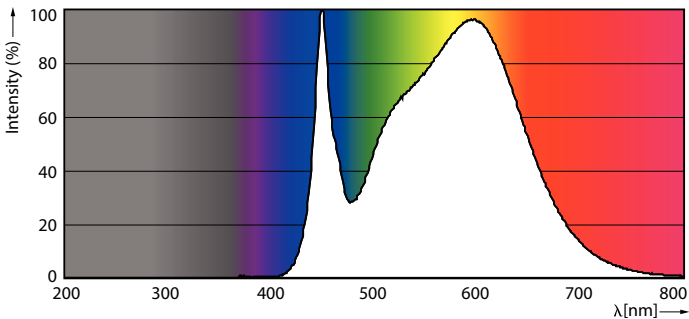


Product	D1	D	A1	A2	A3
5.5PL-C/LED/13V/840/IF5/P/4P 20/1	45.7 mm	45.7 mm	24.6 mm	101.6 mm	117.6 mm

Photometric data

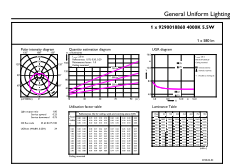


Light Distribution Diagram - 5.5PL-C/LED/13V/840/IF5/P/4P 20/1



Spectral Power Distribution Colour - 5.5PL-C/LED/13V/840/IF5/P/4P 20/1

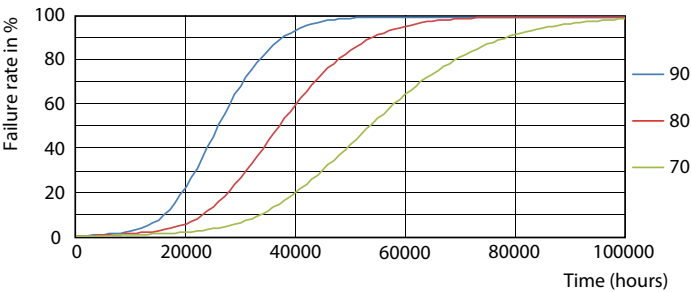
Photometric data



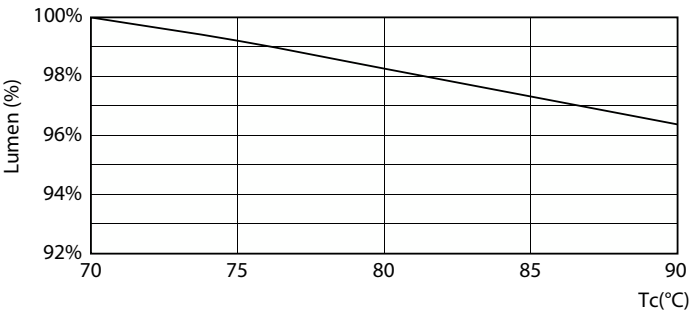
General Uniform Lighting - 5.5PL-C/LED/13V/840/IF5/P/4P 20/1

General uniform lighting - 5.5PL-C/LED/13V/840/IF5/P/4P 20/1

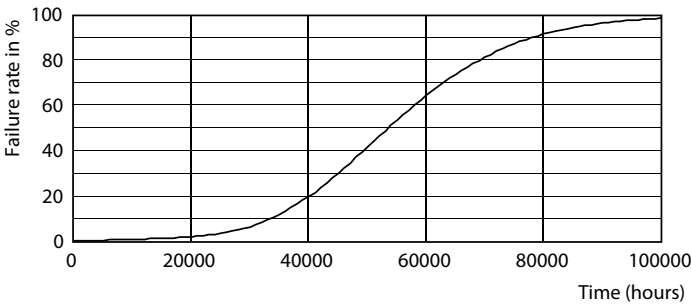
Lifetime



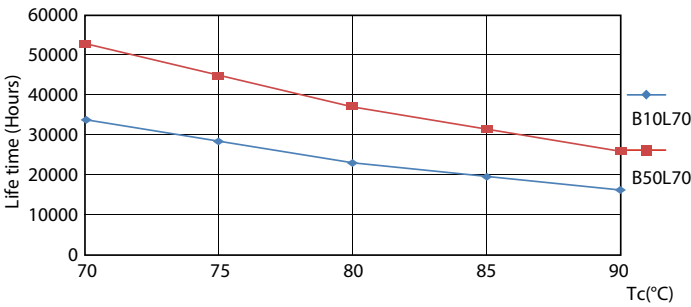
LEDtube PLC 13H 5W GX23-2 827 15D ND



Lumen Maintenance Diagram - 5.5PL-C/LED/13V/840/IF5/P/4P 20/1

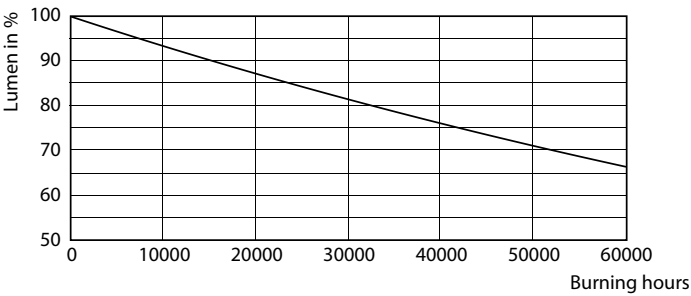


LEDtube PLC 13H 5W GX23-2 827 15D ND



LEDtube PLC 13H 5W GX23-2 827 15D ND

Lifetime



Lumen Maintenance Diagram - 5.5PL-C/LED/13V/840/IF5/P/4P 20/1

