

PB Push Button Box — Stainless Steel 304

Rittal's stainless steel push button boxes are designed for indoor use to house push buttons, selector switches, pilot lights, etc., and to protect such equipment against dirt, dust and sprayed water, oil or coolant. These NEMA rated Type 4, 4X, 12 and 13 cabinets are available in a variety of different configurations.

- Features:**
- ▶ External Mounting Brackets
 - ▶ Captive, Plated Cover Screws

- Material:**
- ▶ Stainless Steel, Type 304
 - ▶ 14 Gauge (2.0 mm) Enclosure and Cover

- Finish:**
- ▶ #4 Brushed

- Ratings:**
- ▶ NEMA Type 4/4X, 12, 13



NEW



Stock No.	Mfr.'s Type	Hole Dia. (mm)	No. of Holes	Type	EACH
70317666	PB01225M14	22.5	1	Miniature Standard	212.94
70317667	PB01305S14	30.5	1	Standard	176.40
70317668	PB01305X14	30.5	1	Extra Deep Standard	212.94
70317669	PB02305S14	30.5	2	Standard	207.90
70319070	PB04225M14	22.5	4	Miniature	338.94

PB Push Button Box — Carbon Steel

These NEMA rated boxes are designed for indoor use to house push buttons, selector switches, pilot lights, etc., and to protect such equipment against dirt, dust and sprayed water, oil or coolant.

- Features:**
- ▶ External Mounting Brackets
 - ▶ Captive, Plated Cover Screws

- Material:**
- ▶ Carbon Steel
 - ▶ 14 Gauge (2.0 mm) Enclosure and Cover

- Finish:**
- ▶ Polyester-Urethane Powder Coat Over Phosphatized Surface
 - ▶ RAL 7035 (Light Gray)

- Ratings:**
- ▶ NEMA 12



NEW



Stock No.	Mfr.'s Type	Hole Dia. (mm)	No. of Holes	Type	EACH
70319148	PB01225M1C	22.5	1	Miniature Standard	65.72
70319272	PB01305S1C	30.5	1	Standard	62.22
70319171	PB02225M1C	22.5	2	Miniature Standard	72.72
70319262	PB02305S1C	30.5	2	Standard	70.98
70319154	PB03225M1C	22.5	3	Miniature Standard	81.48
70319256	PB03305S1C	30.5	3	Standard	79.74
70319161	PB04225M1C	22.5	4	Miniature Standard	88.76
70319174	PB04305S1C	30.5	4	Standard	87.12
70319159	PB06305S2C	30.5	6	Standard	110.96

HD Terminal Box — Stainless Steel 304

Hygienic design enclosures are designed to meet the washdown demands of the food and beverage industry.



NEW



- Configuration:**
- ▶ One-Piece Enclosure Body
 - ▶ Enclosure Body Is Sloped 3° on All Sides
 - ▶ Cover Edges Are Sloped 10° on All Sides
 - ▶ Screw Cover with Quick Release Cover Screws
 - ▶ Removable Blue Silicone Gasket Between Door and Body
 - ▶ Internal Mounting Rails for Mounting of Accessories (e.g. Mounting Panel, DIN Rail)

- Material:**
- ▶ Door and Body: Stainless Steel, Type 304, 16 Gauge (1.5 mm)
 - ▶ Mounting Rails: Steel, Zinc Plated, 14 Gauge (2.0 mm)
 - ▶ Cover Screws: Stainless Steel, Type 304
 - ▶ Gasket: Silicone

- Finish:**
- ▶ Door and Body: Brushed, 400 Grain (Peak-to-Valley Height of Grain <0.8 µm)
 - ▶ Gasket: RAL 5010 (Blue)

- Ratings:**
- ▶ IP66 to IEC 60 529
 - ▶ IP69K to DIN 40 050-9
 - ▶ Gasket Seal Conforms to FDA Guideline 21 CFR 177.2600
 - ▶ NEMA 4X

Stock No.	Mfr.'s Type	Dimensions Inches (mm)			EACH
		Height	Width	Depth	
70319205	1671600	5.9 (150)	5.9 (150)	4.7 (120)	968.44
70319206	1672600	7.9 (200)	7.9 (200)	4.7 (120)	1033.76

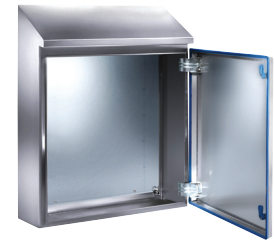
HD Compact Enclosure — Stainless Steel 304

Hygienic design enclosures are designed to meet the washdown demands of the food and beverage industry.

- Configuration:**
- ▶ One-Piece Enclosure Body
 - ▶ 30° Sloped Roof Overhangs Front Door
 - ▶ Right Hand Hinged, with Internal Hinges
 - ▶ Removable Blue Silicone Gasket Between the Door and Body
 - ▶ 1/4 Turn Latch(es) with Hygienic Lock Inserts
 - ▶ Zinc-Plated Mounting Panel

- Material:**
- ▶ Door and Body: Stainless Steel, Type 304, 16 Gauge (1.5 mm)
 - ▶ Lock Inserts: Stainless Steel, Type 316
 - ▶ Mounting Panel: Zinc-Plated Sheet Steel

- Finish:**
- ▶ Door and Body: Brushed, 400 Grain (Peak-to-Valley Height of Grain <0.8 µm)



NEW



- Ratings:**
- ▶ IP66 to IEC 60 529
 - ▶ IP69K to DIN 40 050-9
 - ▶ Gasket Seal Conforms to FDA Guideline 21 CFR 177.2600
 - ▶ UL 1, 12, 13, 3RX, 4X

Stock No.	Mfr.'s Type	Dimensions Inches (mm)			EACH
		Height	Width	Depth	
70319214	1306600	16.9 (430)	15.4 (390)	8.3 (210)	1681.28
70319204	1307600	21.7 (550)	20.1 (510)	8.3 (210)	2002.20
70319215	1310600	25.6 (650)	24.0 (610)	8.3 (210)	2324.54

Mounting Panels for KL and HD Terminal Box

For component installation inside of the enclosure. Assembly screws included as accessories with the enclosure.

- ▶ Material: Carbon Steel, 14 Gauge (2.0 mm)
- ▶ Surface Finish: Zinc Plated
- ▶ Accessories: Self-Tapping Screws, Rittal Part Number 2487.000



NEW



Stock No.	Mfr.'s Type	For Size, Inches (mm)	For Use With Enclosures	EACH
70319238	1560700	5.9 x 5.9 (150 x 150)	1500510, 1514510, 1521010, 1527010, 1670600, 1671600	11.90
70319162	1561700	11.8 x 5.9 (300 x 150)	1501510, 1515510, 1522010, 1530510	14.64
70319163	1562700	7.9 x 7.9 (200 x 200)	1502510, 1516510, 1523010, 1528010, 1672600	14.64
70319197	1563700	11.8 x 7.9 (300 x 200)	1503510, 1517510, 1524010, 1529010, 1531510, 1674600	16.46
70319195	1567700	11.8 x 11.8 (300 x 300)	1507510, 1526010, 1535510	22.86
70319172	1568700	15.7 x 11.8 (400 x 300)	1508510, 1530010, 1536510, 1676600	27.44
70319164	1575700	7.9 x 5.9 (200 x 150)	1528510, 1529510	14.64

Oil Tight Hole Seals

Hole seals are used to seal unused or empty pushbutton holes, conduit openings and knockouts. They protect against dirt, dust, oil and water.

- Features:**
- ▶ Variety of Sizes
 - ▶ Cover Holes with a 0.19" Diameter
 - ▶ Can Be Used on Materials Up to 0.31" Thick
 - ▶ Oil-Resistant Gasket

- Material:**
- ▶ Carbon Steel (RAL 7035, Light Gray) or Stainless Steel, Type 304

- Ratings:**
- ▶ UL/CUL Type 12, 4/4X, 13



NEW



Stainless Steel 304

Stock No.	Mfr.'s Type	For Use With	EACH
70319241	OHS0506	0.50" Conduit Hole	20.88
70319179	OHS0756	0.75" Conduit Hole	24.55
70319176	OHS1006	1.00" Conduit Hole	33.15
70319135	OHSMPB6	Miniature Push Button Hole, 22.5 mm (IEC)	20.48

Carbon Steel

Stock No.	Mfr.'s Type	For Use With	EACH
70319234	OHS050C	0.50" Conduit Hole	8.45
70319233	OHS075C	0.75" Conduit Hole	9.65
70319198	OHS100C	1.00" Conduit Hole	14.45
70319194	OHS125C	1.25" Conduit Hole	15.65
70319239	OHS150C	1.50" Conduit Hole	16.88
70319237	OHS200C	2.00" Conduit Hole	21.70
70319249	OHS250C	2.50" Conduit Hole	24.10
70319191	OHS300C	3.00" Conduit Hole	25.78
70319247	OHS400C	4.00" Conduit Hole	30.70
70319235	OHSMPBC	Miniature Push Button Hole, 22.5 mm (IEC)	8.45
70319250	OHSPPBC	Standard Push Button Hole, 30.5 mm (NEMA)	12.05