

# Cast Aluminum



Acrylic Lens

## Model #Z103

Finish 04, 05, 07  
(shown), 23  
Glass FR  
Sides 5 • Width 8.13"  
Height 9.38" • Ext. 5"  
Lamps 1-E  
Max. Watt 60



## Model #Z100

Finish 04, 05 (shown),  
07, 23  
Glass CL  
Sides 3  
Width 5.75"  
Height 9" • Ext. 4.75"  
Lamps 1-E  
Max. Watt 100



## Model #Z192

Finish 04, 05, 07, 08  
(shown), 23  
Glass CL/BV  
Sides 4  
Width 4.25"  
Height 8.5" • Ext. 4.75"  
Lamps 1-E  
Max. Watt 100



## Model #Z190

Finish 04 (shown lower  
right), 05 (shown  
right), 07, 23  
Glass CL  
Sides 4  
Width 5.25"  
Height 8"  
Ext. 6.5"  
Lamps 1-E  
Max. Watt 100



## Model #Z160

Finish 04 (shown), 05,  
07, 23  
Glass FR  
Sides 6  
Width 6"  
Height 8.6" • Ext. 7"  
Lamps 1-E  
Max. Watt 60



# Cast Aluminum

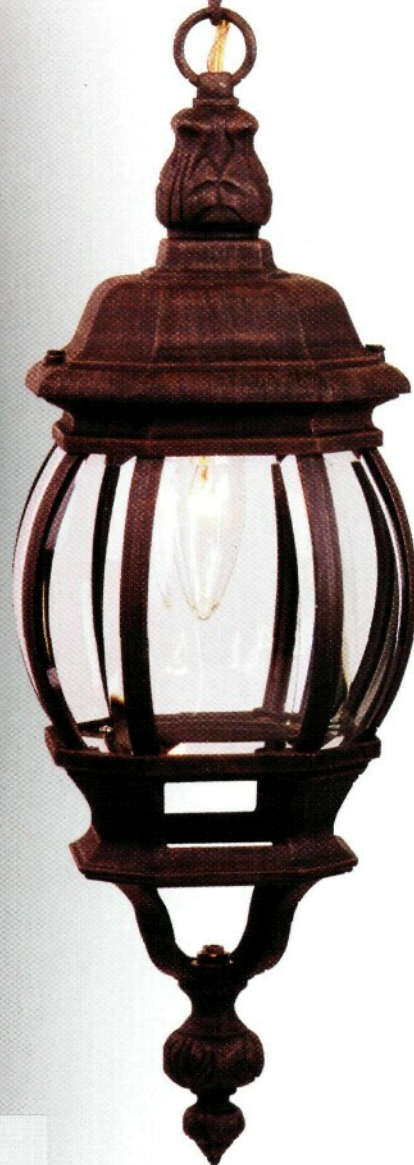


## Model #Z2320

Finish 04, 05 (shown), 07, 23  
Glass CL/BV  
Sides 8  
Width 16"  
Height 17.5"  
Ext. 11"  
Lamps 2-E  
Max. Watt 60

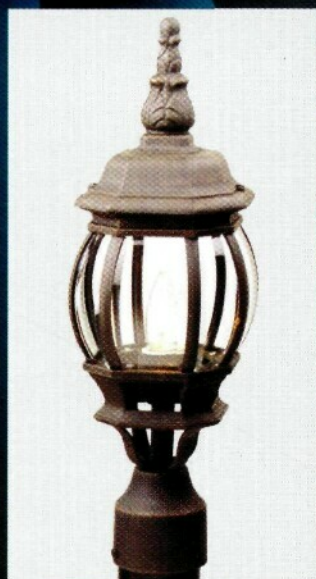
## Model #Z321

Finish 04, 05,  
07 (shown), 23  
Glass CL/BV  
Sides 8  
Width 6.25"  
Height 18.75"\*  
Lamps 1-E  
Max. Watt 100



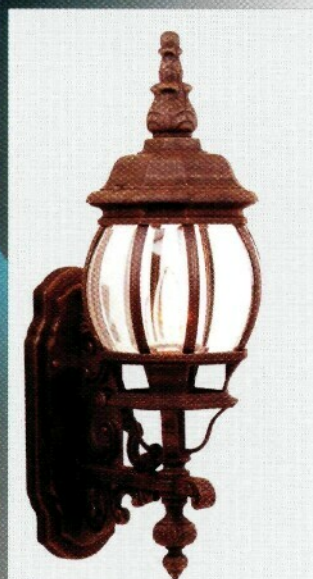
## Model #Z324

Finish 04 (shown), 05, 07,  
08, 23  
Glass CL/BV  
Sides 8  
Width 6.5"  
Height 21.5"  
Ext. 10"  
Lamps 1-E  
Max. Watt 100



## Model #Z325

Finish 04, 05, 07,  
23 (shown)  
Glass CL/BV  
Sides 8  
Width 6.5"  
Height 19.5"  
Lamps 1-E  
Max. Watt 100



## Model #Z320

Finish 04, 05, 07 (shown),  
08, 23  
Glass CL/BV  
Sides 8  
Width 6.5"  
Height 21.5"  
Ext. 10"  
Lamps 1-E  
Max. Watt 100

## Cast Aluminum:

One of the fastest growth categories of outdoor lighting due to the durability and relatively "maintenance-free" properties of the finish.

- **Rust-Proof Construction** – One of the biggest benefits of cast aluminum is that it does not rust!
- **Thick 5 mm Beveled Glass** – All fixtures featuring beveled glass utilize thick 5 mm glass to resist cracking and chipping and enhance the beauty of the lantern.
- **Heat Resistant Porcelain Sockets** – All medium based sockets are made of heat resistant porcelain, rather than phenolic or plastic which tend to melt and make re-lamping difficult, if not impossible. All medium based fixtures are rated for 60 – 100 watts maximum depending upon the size of the fixture.
- **Finish** – Each cast aluminum lantern is treated with a durable powder coat finish for lasting beauty and minimal maintenance.
- **Available Finishes** – Colors are available to match most exteriors.
- **Maintenance and Care** – For the longest lasting finish, lanterns should be periodically wiped clean with a soft dry or damp cloth to remove dust, debris, pollutants, etc.



# Bath Lighting



AB  
Antique Brass



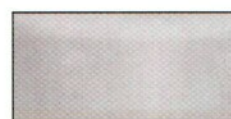
PB  
Polished Brass



W  
White



AW  
Antique White



BN  
Brushed Nickel



BS  
Brownstone



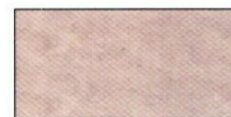
CH  
Chrome



EB  
European Bronze



MB  
Mission Brown



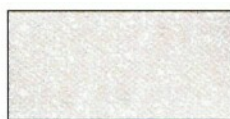
MO  
Mocha



PE  
Pearl Essence



PT  
Pewter



SW  
Sandstone White



TW  
Textured White

# Outdoor Lighting



1  
Antique Brass



2  
Polished Brass



4  
White



04  
Matte White



5  
Black



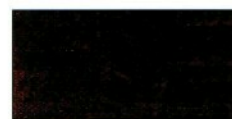
05  
Matte Black



6  
Verdi on Brass



7  
Burnished Copper



07  
Rust



08  
Verdi Green



23  
Weathered Iron



27  
Weathered Brick



28  
Brushed Nickel



45  
Goldstone



50  
Burnished Bronze



51  
English Antique



56  
Stainless Steel



60  
Chicago Brick



65  
Bronze Age



70  
Ironite