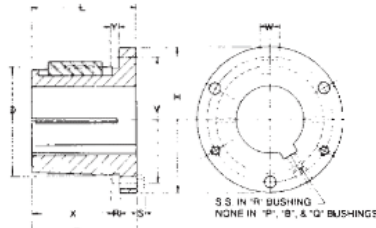


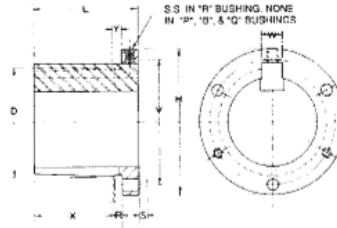
TYPE 1 "G" & "H" BUSHINGS

TYPE 2

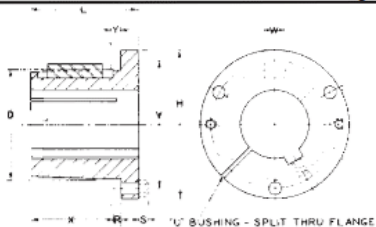


TYPE 1

"P", "B", "Q" & "R" BUSHING

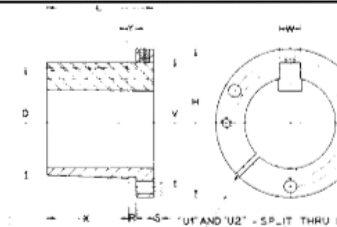


TYPE 2

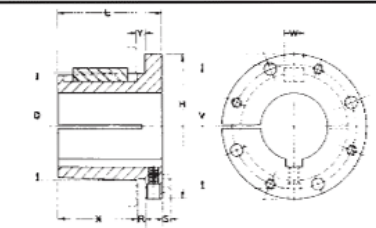


TYPE 1

"S" & "U" BUSHINGS

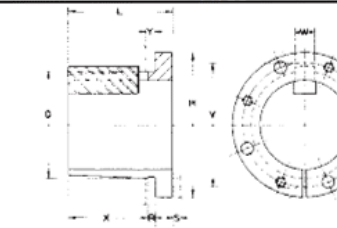


TYPE 2



TYPE 1

"W" & "Y" BUSHINGS



TYPE 2

Table No. 1

Bushing Specifications

Part No.	Dimensions													Bore Range		Cap Screws		Av. Wt. Lbs.	Wrench Torque In.-Lbs.
	L	U	T	D		H	V	W	X	Y	R	S	Type 1	Type 2	No.	SIZE			
				Large End	Small End														
G	1"	1/4"	3/4"	1.172"	1.133"	2"	1 9/16"	—	5/8"	3/16"	1/8"	3/16"	3/8" - 15/16"	1"	2	1/4" X 5/8"	.5	95	
H	1 1/4	1/4	1	1.625	1.570	2 1/2	2	—	7/8	3/16	1/8	3/16	3/8 - 1 3/8	1 7/16 - 1 1/2	2	1/4 X 3/4	.8	95	
P1	1 15/16	13/32	1 17/32	1.9375	1.8555	3	2 7/16	3/8"	1 5/16	7/32	7/32	1/4	1/2 - 7/16	1 1/2 - 1 3/4	3	5/16 X 1	1.3	192	
P2	2 15/16	13/32	2 17/32	1.9375	1.7930	3	2 7/16	3/8	2 5/16	7/32	7/32	1/4	3/4 - 1 7/16	1 1/2 - 1 3/4	3	5/16 X 1	1.5	192	
P3	4 7/16	13/32	4 1/32	1.9375	1.6993	3	2 7/16	3/8	3 13/16	7/32	7/32	1/4	1 1/8 - 1 3/8	1 5/8	3	5/16 X 1	2	192	
B	1 15/16	1/2	1 7/16	2.625	2.5567	3 11/16	3 1/8	1/2	1 3/16	7/32	1/4	1/4	1/2 - 1 15/16	2 - 2 7/16	3	5/16 X 1 1/4	1.8	192	
Q1	2 1/2	17/32	1 31/32	2.875	2.7657	4 1/8	3 3/8	1/2	1 3/4	7/32	7/32	9/32	3/4 - 2 1/16	2 1/8 - 2 11/16	3	3/8 X 1 1/4	3.5	348	
Q2	3 1/2	17/32	2 31/32	2.875	2.7032	4 1/8	3 3/8	1/2	2 3/4	7/32	7/32	9/32	1 - 2 1/16	2 1/8 - 2 5/8	3	3/8 X 1 1/4	4.5	348	
Q3	5	17/32	4 15/32	2.875	2.6094	4 1/8	3 3/8	1/2	4 1/4	7/32	7/32	9/32	1 3/8 - 2 1/16	2 1/8 - 2 1/2	3	3/8 X 1 1/4	5.5	348	
R1	2 7/8	5/8	2 1/4	4.000	3.8750	5 3/8	4 5/8	3/4	2	1/4	1/4	9/32	1 1/8 - 2 13/16	2 7/8 - 3 3/4	3	3/8 X 1 3/4	7.5	348	
R2	4 7/8	5/8	4 1/4	4.000	3.7500	5 3/8	4 5/8	3/4	4	1/4	1/4	9/32	1 3/8 - 2 13/16	2 7/8 - 3 5/8	3	3/8 X 1 3/4	11	348	
S1	4 3/8	3/4	3 5/8	4.625	4.4180	6 3/8	5 3/8	3/4	3 5/16	5/16	5/16	3/8	1 11/16 - 3 3/16	3 1/4 - 4 1/4	3	1/2 X 2 1/4	13.5	840	
S2	6 3/4	3/4	6	4.625	4.2696	6 3/8	5 3/8	3/4	5 11/16	5/16	5/16	3/8	1 7/8 - 3 3/16	3 1/4 - 4 3/16	3	1/2 X 2 1/4	19	840	
U0	4 15/16	3/4	4 3/16	6.000	5.7656	8 3/8	7	1 1/4	3 3/4	7/16	7/16	15/32	2 3/8 - 4 1/4	4 3/8 - 5 1/2	3	5/8 X 2 3/4	27	1680	
U1	7 1/8	1 1/16	6 1/16	6.000	5.6485	8 3/8	7	1 1/4	5 5/8	7/16	7/16	15/32	2 3/8 - 4 1/4	4 3/8 - 5 1/2	3	5/8 X 2 3/4	40	1680	
U2	10 1/8	1 1/16	9 1/16	6.000	5.4610	8 3/8	7	1 1/4	8 5/8	7/16	7/16	15/32	2 7/16 - 4 1/4	4 3/8 - 5	3	5/8 X 2 3/4	50	1680	
W1	8 1/4	1 7/16	6 13/16	8.500	8.1016	12 1/2	10	1 1/4	6 3/8	7/16	7/16	9/16	3 3/8 - 6 3/16	6 1/4 - 7 7/16	4	3/4 X 3	104	3000	
W2	11 1/4	1 7/16	9 13/16	8.500	7.9141	12 1/2	10	1 1/4	9 3/8	7/16	7/16	9/16	3 3/8 - 6 3/16	6 1/4 - 7 7/16	4	3/4 X 3	133	3000	
Y0*	11 1/8	2	9 1/8	12.000	11.4688	16 1/2	14 1/2	2	8 1/2	5/8	5/8	5/8	6 - 7 15/16	8 - 10	4	1 X 5	270	7200	

S1 — 1 11/16", S1 1 3/4 and S2 — 1 7/8" to 2 1/8" Bushings are Steel. U0 and U1 — 2 3/8" to 3 3/16" and U2 2 7/16" to 3 3/16" are Cast Iron. "W" and "Y" Bushings are Cast Iron. All other Bushings on this page either Sintered Steel, Malleable Iron or Ductile Iron. Contact Factory For Clarification. *Y Bushings are MADE-TO-ORDER.

Note - Taper on all Browning Split Bushings is 3/4" Per Foot on Diameter.

COMPLETE ROUND SHAFT COVERAGE PLUS MILLIMETER AND SPLINE BORES

Table No. 1

Stock Inch Bore Bushings

Stock Bores	Keyseat	G	H	P1	P2	P3	B	Q1	Q2	Q3	R1	R2	S1
3/8*	None	X	X										
7/16	None	X	X										
1/2	1/8 X 1/16	X	X	X									
9/16	1/8 X 1/16	X	X	X			X						
19/32	3/16 X 3/32		X										
5/8	3/16 X 3/32	X	X	X			X						
21/32	3/16 X 3/32		X	X									
11/16	3/16 X 3/32	X	X	X			X						
3/4	3/16 X 3/32	X	X	X	X		X	X					
25/32	3/16 X 3/32		X	X									
13/16	3/16 X 3/32	X	X	X	X		X	X					
7/8	3/16 X 3/32	X	X	X	X		X	X					
15/16	1/4 X 1/8	X*	X	X	X		X	X					
31/32	1/4 X 1/8		X	X									
1	1/4 X 1/8	X*	X	X	X		X	X	X				
1 1/16	1/4 X 1/8		X	X	X		X	X	X				
1 1/8	1/4 X 1/8		X	X	X	X	X	X	X		X		
1 3/16	1/4 X 1/8		X	X	X		X	X	X		X		
1 1/4	1/4 X 1/8		X*	X	X		X	X	X		X		
1 5/16	5/16 X 5/32		X*	X	X		X	X	X		X		
1 3/8 ▲	5/16 x 5/32		X*	X	X	X*	X	X	X	X	X		
1 3/8 ▲	3/8 X 3/16		X*	X	X		X	X	X		X		
1 7/16	3/8 X 3/16		X*	X	X*		X	X	X	X	X	X	
1 1/2	3/8 X 3/16		X*	X	X		X	X	X	X	X	X	
1 9/16	3/8 X 3/16		X	X	X		X	X	X	X	X	X	
1 5/8	3/8 X 3/16		X	X	X	X	X	X	X	X	X	X	
1 11/16	3/8 X 3/16		X	X	X	X	X	X	X	X	X	X	X
1 3/4	3/8 X 3/16		X	X	X	X	X	X	X	X	X	X	X
B Q1 Q2 Q3 R1 R2 S1 S2 U0 U1 U2													
1 13/16	1/2 X 1/4	X	X	X	X	X	X	X	X				
1 7/8	1/2 X 1/4	X	X	X	X	X	X	X	X				
1 15/16	1/2 X 1/4	X	X	X	X	X	X	X	X				
2	1/2 X 1/4	X	X	X	X	X	X	X	X				
2 1/16	1/2 X 1/4	X	X	X	X	X	X	X	X				
2 1/8	1/2 X 1/4	X	X	X	X	X	X	X	X				
2 3/16	1/2 X 1/4	X	X	X	X	X	X	X	X				
2 1/4	1/2 X 1/4	X	X	X	X	X	X	X	X				
2 5/16	5/8 X 5/16	X	X	X	X	X	X	X	X				
2 3/8	5/8 X 5/16	X	X	X	X	X	X	X	X	X	X		
2 7/16	5/8 X 5/16	X	X	X	X	X	X	X	X	X	X	X	
2 1/2	5/8 X 5/16		X	X	X	X	X	X	X	X	X	X	
2 9/16	5/8 X 5/16		X	X	X	X	X	X	X	X	X	X	
2 5/8	5/8 X 5/16		X	X	X	X	X	X	X	X	X	X	
2 11/16	5/8 X 5/16		X	X	X	X	X	X	X	X	X	X	
2 3/4	5/8 X 5/16		X	X	X	X	X	X	X	X	X	X	
2 13/16	3/4 X 3/8		X	X	X	X	X	X	X	X	X	X	
2 7/8	3/4 X 3/8		X	X	X	X	X	X	X	X	X	X	
2 15/16	3/4 X 3/8		X	X	X	X	X	X	X	X	X	X	
3	3/4 X 3/8		X	X	X	X	X	X	X	X	X	X	
3 1/8	3/4 X 3/8		X	X	X	X	X	X	X	X	X	X	
3 3/16	3/4 X 3/8		X	X	X	X	X	X	X	X	X	X	
3 1/4	3/4 X 3/8		X	X	X	X	X	X	X	X	X	X	
R1 R2 S1 S2 U0 U1 U2 W1 W2													
3 3/8	7/8 X 7/16	X	X	X	X	X	X	X	X	X	X	X	X
3 7/16	7/8 X 7/16	X	X	X	X	X	X	X	X	X	X	X	X
3 1/2	7/8 X 7/16	X	X	X	X	X	X	X	X	X	X	X	X
3 5/8	7/8 X 7/16	X	X	X	X	X	X	X	X	X	X	X	X
3 11/16	7/8 X 7/16	X	X	X	X	X	X	X	X	X	X	X	X
3 3/4	7/8 X 7/16	X	X	X	X	X	X	X	X	X	X	X	X
3 7/8	1 X 1/2		X	X	X	X	X	X	X	X	X	X	X
3 15/16	1 X 1/2		X	X	X	X	X	X	X	X	X	X	X
4	1 X 1/2		X	X	X	X	X	X	X	X	X	X	X
4 1/8	1 X 1/2		X	X	X	X	X	X	X	X	X	X	X
4 3/16	1 X 1/2		X	X	X	X	X	X	X	X	X	X	X
4 1/4	1 X 1/2		X	X	X	X	X	X	X	X	X	X	X
4 3/8	1 X 1/2		X	X	X	X	X	X	X	X	X	X	X
4 7/16	1 X 1/2		X	X	X	X	X	X	X	X	X	X	X
4 1/2	1 X 1/2		X	X	X	X	X	X	X	X	X	X	X
4 5/8	1 1/4 X 5/8		X	X	X	X	X	X	X	X	X	X	X
4 11/16	1 1/4 X 5/8		X	X	X	X	X	X	X	X	X	X	X
4 3/4	1 1/4 X 5/8		X	X	X	X	X	X	X	X	X	X	X
4 7/8	1 1/4 X 5/8		X	X	X	X	X	X	X	X	X	X	X
4 15/16	1 1/4 X 5/8		X	X	X	X	X	X	X	X	X	X	X
5	1 1/4 X 5/8		X	X	X	X	X	X	X	X	X	X	X
U0 U1 W1 W2													
5 1/8*	1 1/4 X 5/8	X	X	X	X								
5 3/16	1 1/4 X 5/8	X	X	X	X								
5 1/4	1 1/4 X 5/8	X	X	X	X								
5 3/8	1 1/4 X 5/8	X	X	X	X								
5 7/16	1 1/4 X 5/8	X	X	X	X								
5 1/2	1 1/4 X 5/8	X	X	X	X								

▲ 1 3/8 Bore Bushings with 5/16 x 5/32" Keyway will be shipped unless the 3/8 x 3/16 Keyway is specified on the order.

* These sizes have a Shallow Keyseat. Special Keys furnished to fit standard depth keyseats in shafts.

Table No. 1 (Cont.)

Stock Bores	Keyseat	W1	W2
5 5/8	1 1/2 X 3/4	X	X
5 3/4	1 1/2 X 3/4	X	X
5 7/8	1 1/2 X 3/4	X	X
5 15/16	1 1/2 X 3/4	X	X
6	1 1/2 X 3/4	X	X
6 1/8	1 1/2 X 3/4	X	X
6 3/16	1 1/2 X 3/4	X	X
6 1/4	1 1/2 X 3/4	X	X
6 3/8	1 1/2 X 3/4	X	X
6 7/16	1 1/2 X 3/4	X	X
6 1/2	1 1/2 X 3/4	X	X
6 5/8	1 3/4 X 3/4	X	X
6 3/4	1 3/4 X 3/4	X	X
6 7/8	1 3/4 X 3/4	X	X
6 15/16	1 3/4 X 3/4	X	X
7	1 3/4 X 3/4	X	X
7 1/8	1 3/4 X 3/4	X	X
7 3/16	1 3/4 X 3/4	X	X
7 1/4	1 3/4 X 3/4	X	X
7 3/8	1 3/4 X 3/4	X	X
7 7/16	1 3/4 X 3/4	X	X

Table No. 2 Stock Millimeter Bore Bushings

Stock Bores	Keyseat (Millimeters)	G	H	P1	B	Q1	R1	R2
10 mm.	None	X	X					
11 mm.	None	X	X					
12 mm.	None	X	X					
14 mm.	5 x 2.5	X	X	X				
15 mm.	5 x 2.5	X	X	X	X			
16 mm.	5 x 2.5	X	X	X	X			
18 mm.	6 x 3	X	X	X	X	X		
19 mm.	6 x 3	X	X	X	X	X		
20 mm.	6 x 3	X	X	X	X	X		
22 mm.	6 x 3	X	X	X	X	X		
24 mm.	8 x 3.5	X	X	X	X	X		
25 mm.	8 x 3.5	X	X	X	X	X		
28 mm.	8 x 3.5		X	X	X	X	X	
30 mm.	8 x 3.5		X	X	X	X	X	
32 mm.	10 x 4		X	X	X	X	X	
35 mm.	10 x 4		X	X	X	X	X	X
36 mm.	10 x 4		X	X	X	X	X	X
38 mm.	10 x 4		X	X	X	X	X	X
39 mm.	12 x 4		X	X	X		X	X
40 mm.	12 x 4		X	X	X	X	X	X
42 mm.	12 x 4		X	X	X	X	X	X
45 mm.	14 x 4.5		X	X	X	X	X	X
48 mm.	14 x 4.5		X	X	X	X	X	X
50 mm.	14 x 4.5		X	X	X	X	X	X
55 mm.	16 x 5		X	X	X	X	X	X
60 mm.	18 x 5.5		X	X	X	X	X	X
65 mm.	18 x 5.5		X	X	X	X	X	X
70 mm.	20 x 6		X	X	X	X	X	X
75 mm.	20 x 6		X	X	X	X	X	X
80 mm.	22 x 7		X	X	X	X	X	X
85 mm.	22 x 7		X	X	X	X	X	X
90 mm.	25 x 7		X	X	X	X	X	X
95 mm.	25 x 7		X	X	X	X	X	X

Table No. 3 Stock Spline Bore Bushings

Spline	H	P1	Q1	Q2
.978 - 10 Inv.	X	X		
1 1/8 - 6B	X	X	X	
1 1/4 - 10B		X		
1 3/8 - 6B	X	X	X	X
1 3/8 - 10B		X	X	
1 3/8 - 21 Inv.	X	X	X	