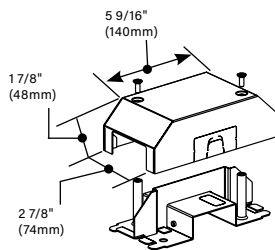


2400D SERIES™ RACEWAY

2400D Series Raceway Fittings Ordering Information (continued)

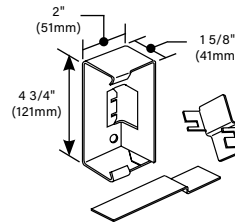
Bridge Fitting


PART NUMBERS:
V2475D (Ivory)

2475D-FW (Fog White)

Allows 2400D Series Raceway runs to bridge over existing installations of 2400, 2400D, 500, and 700 Series Raceways.

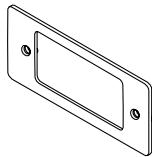
V4089 Reducing Connector



Connects 4000 Series Raceway to 2400D Series Raceway.

5507 Series Faceplates Ordering Information

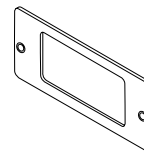
Modular Furniture Adapter


PART NUMBERS:
5507AD (Ivory)

5507AD-FW (Fog White)

Covers Activate modular furniture adapter and other modular furniture adapters. Not for use with decorator (rectangular) style devices.

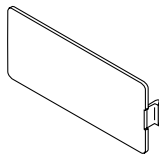
Rectangular Faceplate


PART NUMBERS:
5507R (Ivory)

5507R-FW (Fog White)

Covers rectangular decorator style devices.

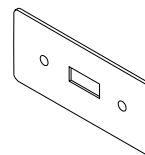
Blank Faceplate


PART NUMBERS:
5507B (Ivory)

5507B-FW (Fog White)

Covers unused compartments in the device bracket.

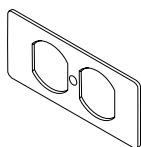
Switch Faceplate


PART NUMBERS:
5507SW (Ivory)

5507SW-FW (Fog White)

Covers standard toggle switches.

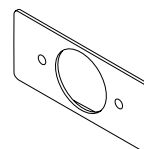
Duplex Faceplate


PART NUMBERS:
5507D (Ivory)

5507D-FW (Fog White)

Covers duplex style devices including 106 Frame.

Single Receptacle Faceplate


PART NUMBERS:
5507T1 (Ivory)

5507T1-FW (Fog White)

Covers single receptacles 1.59" (40.4mm) diameter.