

# YOUR PRODUCT PACKAGE IS HERE !

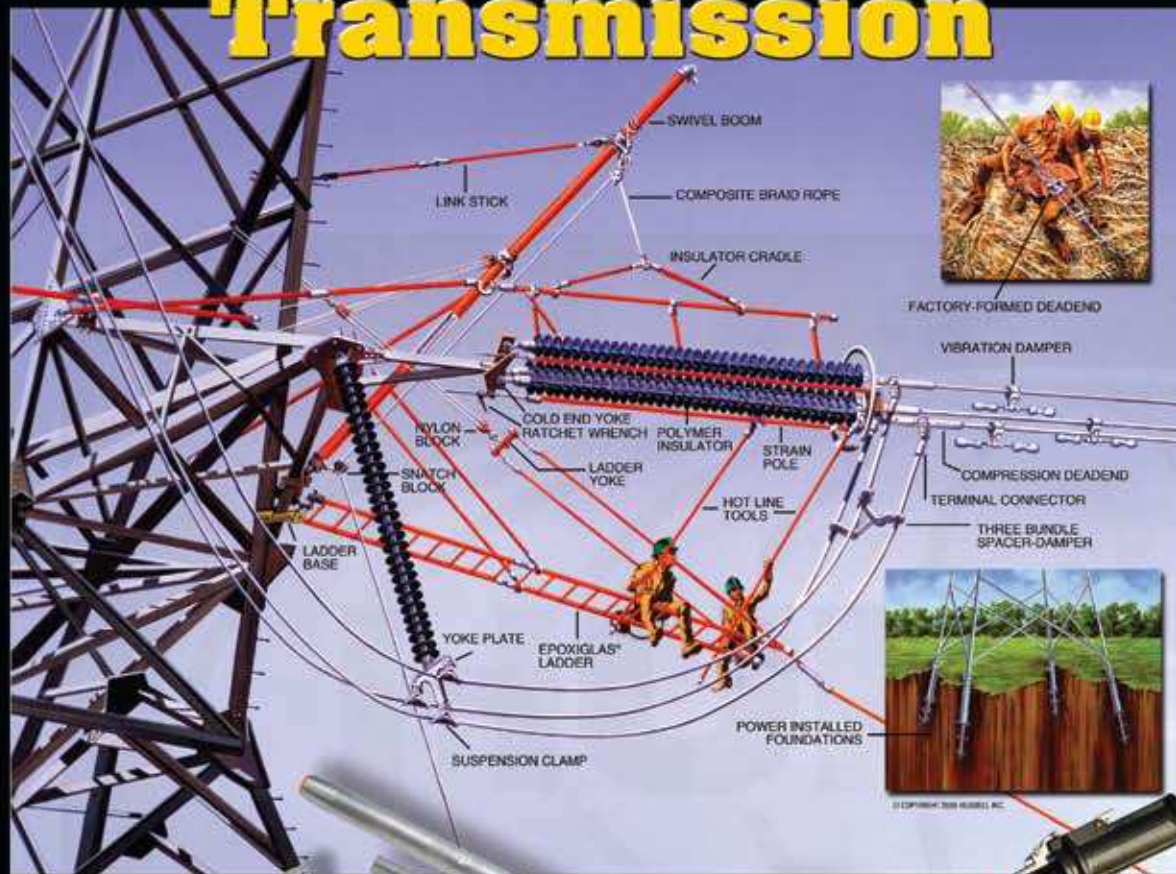


**HUBBELL**  
Power Systems





# Transmission



ANCHORS & FOUNDATIONS  
CONNECTORS & HARDWARE  
FACTORY FORMED DEADENDS  
HOT LINE TOOLS  
INSULATORS  
SWITCHES  
TRANSMISSION LINE ARRESTERS

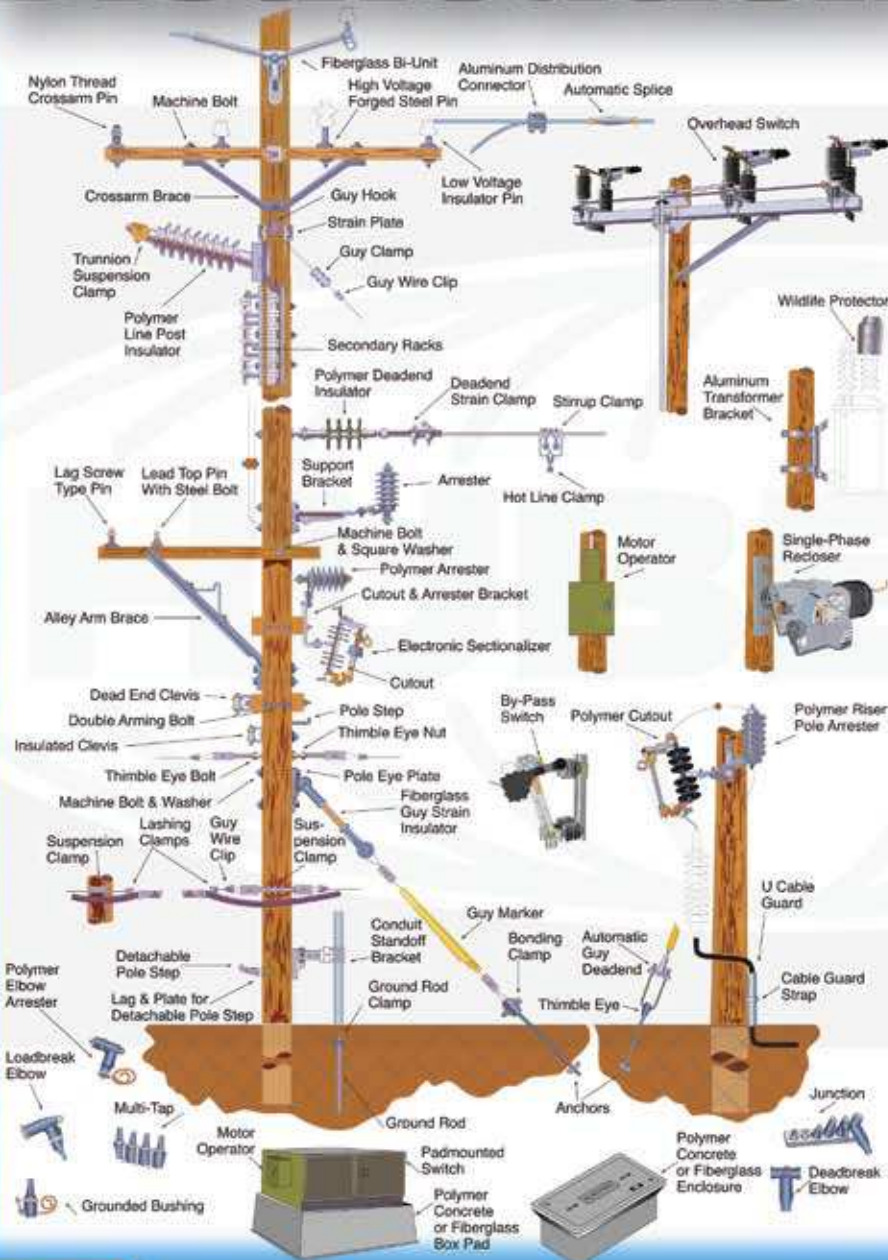




## 3



# Distribution



ANCHORS  
 ARRESTERS  
 BOX PADS  
 CABLE ACCESSORIES  
 CONNECTORS  
 CONSTRUCTION TOOLS  
 CUTOUTS & FUSE LINKS  
 DRAIN SYSTEMS  
 FIBERGLASS PEDESTALS  
 FORMED WIRE PRODUCTS  
 GROUNDING EQUIPMENT  
 HOT LINE TOOLS  
 INSULATORS  
 NARROW PROFILE CONSTRUCTION  
 OVERHEAD SWITCHES  
 PAD-MOUNTED SWITCHES  
 POLE LINE HARDWARE  
 RECLOSERS  
 RESETTABLE SECTIONALIZER  
 SECTIONALIZING CABINETS  
 UNDERGROUND ENCLOSURES  
 WILDLIFE PROTECTORS







**HUBBELL**

6

## ARRESTERS

## BOX PADS

## CABLE ACCESSORIES

COVER UP

## MANHOLE COVERS

## MICROPILES

## SECTIONALIZING CABINETS

## SWITCHES

## TOOLS

## UNDERGROUND ENCLOSURES

## Vaults





# ENCLOSURES



ADJUST TO GRADE VAULTS  
BOX PADS  
COMPOSITE MANHOLE COVERS  
FIBERGLASS PEDESTALS  
FLARED WALL BOXES  
RUSTGUARD ENCLOSURES  
SECTIONALIZING CABINETS  
STRAIGHT WALL BOXES  
UNDERGROUND ENCLOSURES



**HUBBELL®**  
Power Systems

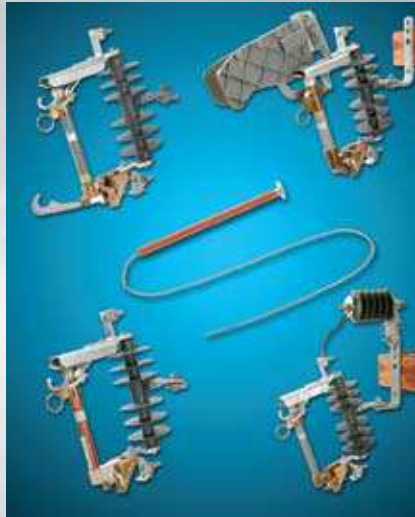


# Your Source for the Industry's Widest Product Offering

## Cutouts and Fuse Links

Equipment to protect against faults and over-current conditions on power distribution systems.

- Open-Type Cutouts
- Linkbreak Cutouts
- Loadbreak Cutouts
- Cutout-Arrester Combinations
- Polymer Cutouts
- Primary Fuse Links



## Overhead Distribution Switches & Reclosers

Equipment used to control and route the flow of power through electrical lines. Reclosers help protect the system.

- Hookstick Switches
- Automation-Ready Switches
- Line Tension Disconnects
- By-Pass Switches
- Motor Operators
- Single Phase Reclosers



## Cable Accessories

Products to connect, sectionalize and protect underground cable systems.

- 200A Loadbreak Products
- 600A Loadbreak Products
- Elbow Arresters



## Arresters

Equipment to protect against over voltages such as lightning or switching.

- Station Class (Polymer & Porcelain)
- Protecta\*Lite® Systems (Polymer)
- Intermediate Class (Polymer)
- Distribution Class (Polymer)
- ANSI and IEC Designs
- Riser Pole (Polymer)
- Distribution (Polymer) Arrester



## Underground Switches

Dead-front units for underground distribution sectionalizing in a wide variety of circuit configurations.

- Pad-Mounted Switches
- Switch-Fuse Cabinets
- Air-Insulated Switches
- Motor Operators



## Above ground & Underground Enclosures & Pads

- Backflow Enclosures
- Electrical Equipment
- Traffic Signal Cabinet Boxes
- Cabinet Pads
- Box Pads
- Manhole Covers
- Pedestals
- Wall Boxes
- Sectionalizing Cabinets





## Hot Line Tools

All types of tools mounted on Epoxiglas® insulated poles. Used to maintain energized high-voltage lines.

- Insulated Load-Handling Tools
- Storage and Transport Trailers
- Insulated Hand-Held Sticks
- Insulated Hot-Line Ladders
- Platforms and Accessories
- Rubber Line Hose
- Cover-Up and Barriers
- Meters and Instruments
- Telescoping Tools
- Deadend Tools
- Conductor-Support Tools
- Jumpering Equipment
- Rubber Insulating Gloves & Sleeves



## Resettable Sectionalizers

The sectionalizer offers a convenient way of isolating sections of distribution systems in the event of a permanent fault, while eliminating outages due to temporary faults. The resettable design eliminates the need to change the consumable actuator every time the sectionalizer operates.



## Drain Systems

- Transportation
- Presloped Trench
- Industrial Flooring
- Foundation Ventilation



## Construction Tools

Tools and accessories for building overhead, outside plant and underground power lines.

- Capstan Hoists
- Chain Hoists
- Nylon Strap Hoists
- Construction Ladders
- Ropes and Slings
- Bags and Buckets
- Pole-Handling Tools



## Temporary-Grounding Equipment

Clamps and accessories to help promote the safety of linemen while doing maintenance work on temporarily "dead" lines.

- Grounding Clamps
- Grounding Cable
- Substation Grounding Sets
- Underground Distribution Grounding Sets



**HUBBELL**  
Power Systems



## Anchors and Foundations

Anchors help hold erect overhead power and communication lines. Foundations support towers, streetlight standards and apparatus.

- Screw Anchors
- Expanding Anchors
- Plate Anchors
- Rock Anchors
- Installing Tools
- Foundation Screw Piles
- HeliCAP® Engineering Software
- HELICAL PULLDOWN® Micropiles
- Tiebacks
- Resistance Piers



## Capacitance-Graded Bushings

For transformers and oil circuit breakers and most other power apparatus where HV bushings are used.

- Bushings
- Test Terminals
- Bushing Repair



## Wildlife Protectors Equipment Locks

Polypropylene wildlife protectors guard bushings. Locks secure equipment.

- Bushing Protectors
- Tamper-proof Locks



## Formed-Wire Products

Precision machine-spiralled wire products for deadending and conductor tying.

- Deadend Grips for Guy Strand
- Insulator Ties



## Splices, Deadends, Dampers, Fittings and Accessories

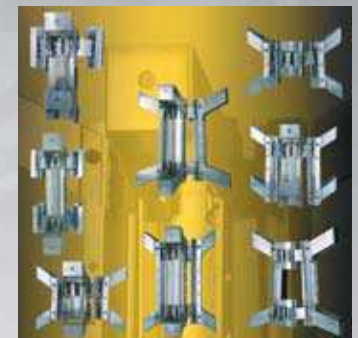
- Automatic Line Splices
- GDW Wedge Deadend
- Compression Fittings
- Stockbridge Dampers



## Pole Line Hardware

Galvanized-steel and aluminum fixtures and extruded plastic materials are used in overhead, outside plant and underground line construction.

- Anchor Rods
- Bolts & Nuts
- Brackets & Plates
- Cable Clamps
- Cable Guards
- Cable Positioners
- Cable Racks
- Cable Route Markers
- Capacitor Racks
- Clevises & Wireholders
- Conduit Standoffs
- Fiberglass Pedestals
- Ground Rods
- Ground-Rod Clamps
- Guy Guards
- Guying Bolts & Clamps
- Hangers
- Manhole Ladders
- Pins & Racks
- Platforms
- Pole Bands
- Pole Steps
- Staples
- Steel Suspension Arms
- Transformer Mounts



## Insulators

Polymer insulators for transmission and distribution lines.

### Transmission Insulators

- Suspension Insulators
- Line Post Insulators
- Station Post Insulators

### Distribution Insulators

- Suspension Insulators
- Station Post Insulators





## Narrow-Profile Fiberglass Construction

Pole-framing accessories  
and conductor accessories  
for electrical transmission  
and distribution systems.

Poletop Pins  
Vertical Pins  
Horizontal Pins  
Apparatus Mounts  
Deadend Arms  
Guy Strain Insulators



## Connectors and Crimping Tools

Transmission, distribution  
and substation products,  
including connectors, clamps,  
line and tower hardware.

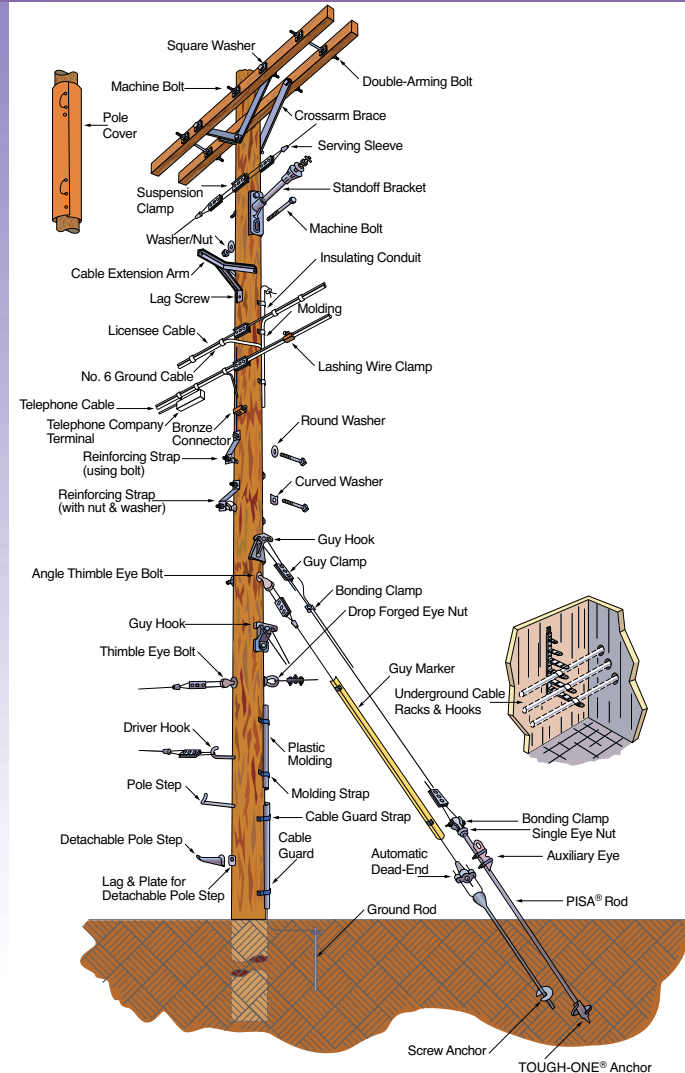
Hot Line Clamps  
Stirrup Clamps  
Suspension Clamps  
Deadend Clamps  
Substation Connectors  
Connector Die Sets  
Crimping Tools  
Vise-Type Connectors  
Versa-Crimp® Tools



## Transmission, Distribution, & Substation Power Switches

Center Break  
Center Break "V"  
Side Break  
Vertical Break  
Double Center Break

# Outside Plant



**HUBBELL**  
Power Systems



# **TRANSMISSION DISTRIBUTION SUBSTATION & UNDERGROUND PRODUCTS**

**[www.hubbellpowersystems.com](http://www.hubbellpowersystems.com)  
[hpsliterature@hps.hubbell.com](mailto:hpsliterature@hps.hubbell.com)**

UNITED STATES  
CANADA & INTERNATIONAL  
HUBBELL POWER SYSTEMS, INC.  
210 N. Allen Street  
Centralia, Mo 65240-1395  
Phone: 1-573-682-5521  
Fax: 1-573-682-8714  
E-mail: [hpsliterature@hps.hubbell.com](mailto:hpsliterature@hps.hubbell.com)

MEXICO  
HUBBELL DE MEXICO, S.A. DE C.V.  
Av. Insurgentes Sur # 1228, Piso 8  
Col. Tiacoquemecatl Del Valle  
Mexico, D.F. 03200  
Phone: 52-55-9151-9999  
Fax: 52-55-9151-9988  
Website: [hubbell.com.mx](http://hubbell.com.mx)



**HUBBELL®**  
**Power Systems**