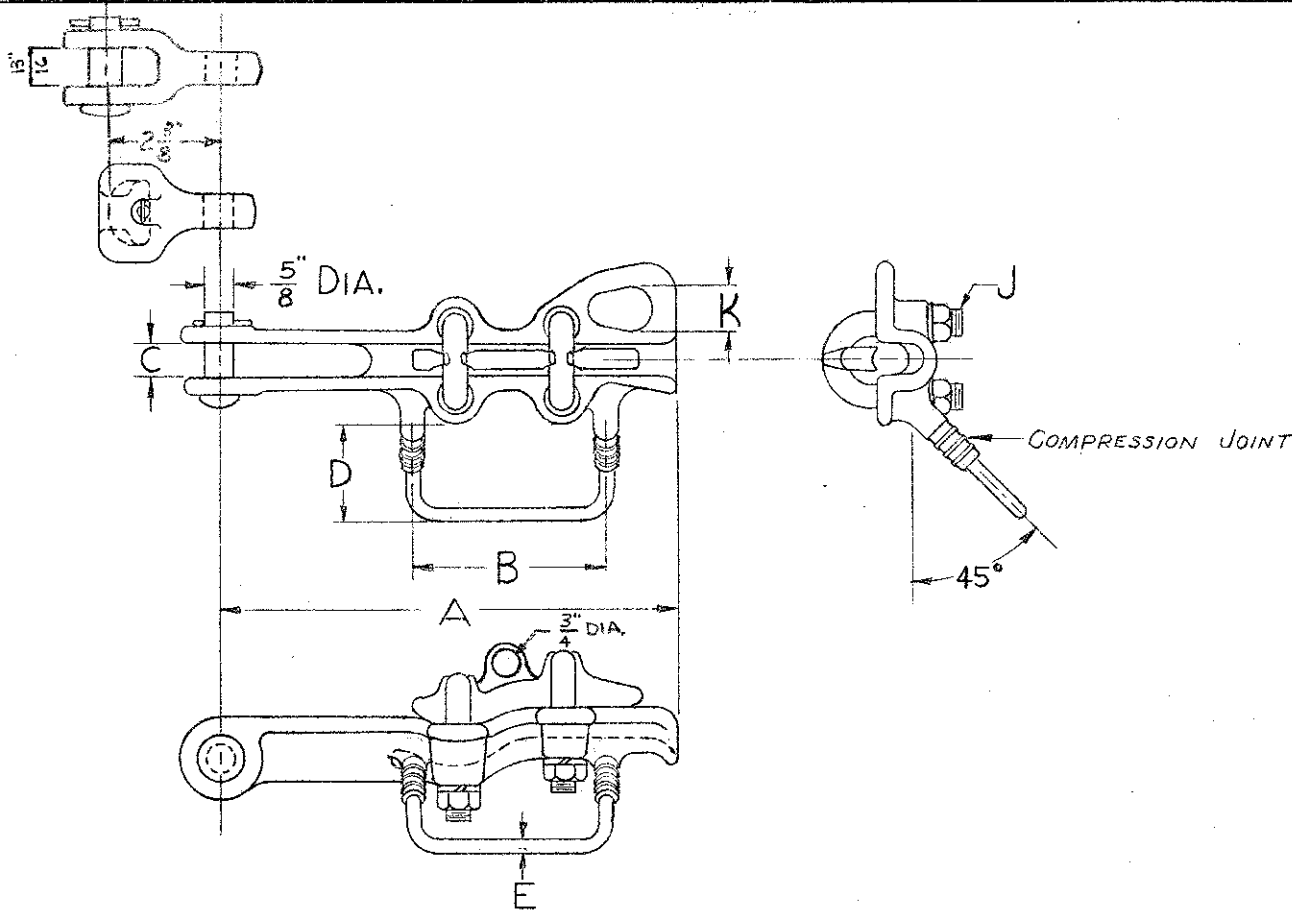


REVISIONS	DATE	NO.	DESCRIPTION	BY



- NOTES:
1. MATERIAL - BODY AND RIDER #356 T6 ALUMINUM ALLOY.
  2. LOOP - HARD DRAWN COPPER.
  3. SOCKETS AND CLEVISSES - 65452 DUCTILE IRON
  4. HARDWARE - GALVANIZED STEEL WITH STAINLESS STEEL COTTER KEY & LOCKWASHERS  
MAY BE MECHANICAL PLATED OR HOT DIP GALV. STEEL.

CATALOG NUMBER	TYPE FITTING	MIN. CABLE DIA.	MAX. CABLE DIA.	DIMENSIONS IN INCHES							ULTIMATE STRENGTH	
				A	B	C	D	E SIZE	J	K		
ADES-46-S	SOCKET							.289"				
ADES-46-C	CLEVIS	.18	.46	7 1/2	4	3/4	2	#1	3/8	7/8	6,000#	
ADES-46-N	NONE											
ADES-60-S	SOCKET							.325"				
ADES-60-C	CLEVIS	.36	.60	9 5/8	4	3/4	3 1/16	#1/10	1/2	15/16	8,000#	
ADES-60-N	NONE											
ADES-70-S	SOCKET							.325"				
ADES-70-C	CLEVIS	.46	.70	10 3/4	4 3/32	3/4	2 1/8	#1/10	1/2	15/16	8,000#	
ADES-70-N	NONE											
ADES-86-S	SOCKET							.365"				
ADES-86-C	CLEVIS	.52	.86	11	5	15/16	2 1/4	#2/10	1/2	15/16	8,000#	
ADES-86-N	NONE											

REVISIONS	DATE	NO.	DESCRIPTION	BY

PROJECT DST-3 FI-5

R-29	ER 735
ANDERSON ELECTRIC CORP. BIRMINGHAM ALABAMA	
CAT. NO. ADES (TAB)	DWG. NO. C-1689

DATE 2-3-58  
DWN BY WDS CKD BY  
APPROVED KS  
SCALE

ALUMINUM DEAD-END  
STIRRUP-STRAIN CLAMP