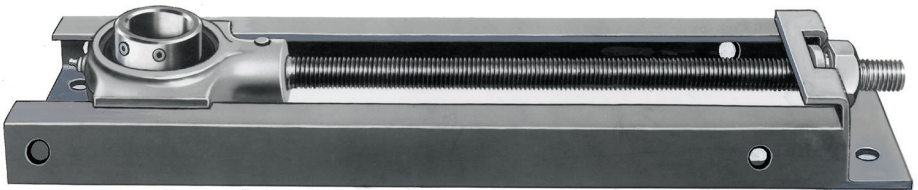


## Bearing Take-Up Frame Assemblies Instruction Manual

These instructions must be read thoroughly before installation or operation. This instruction manual was accurate at the time of printing. Please see [dodgeindustrial.com](http://dodgeindustrial.com) for updated instruction manuals.

**WARNING:** To ensure the drive is not unexpectedly started, turn off and lock-out or tag power source before proceeding. Failure to observe these precautions could result in bodily injury.

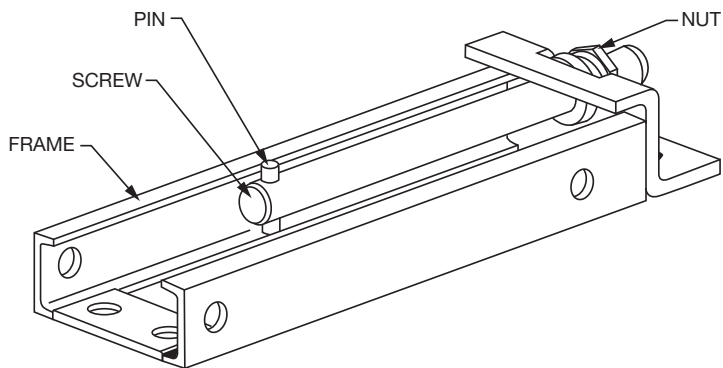
**WARNING:** All products over 25 kg (55 lbs) are noted on the shipping package. Proper lifting practices are required for these products.



### INSTALLATION

1. Make sure that Frame Number on bearing box corresponds with frame that is to be used.
2. Place take-up bearing in open end of frame with inner race facing outward, away from mounting surface. This allows easy locking of bearing to shaft and ample access to the lube fitting after installation.
3. Place adjusting screw through hole in end of take-up frame and into bearing housing. Line up locking pin hole.
4. Support bearing housing and drive locking pin (packaged with bearing) into bearing housing and through adjusting screw until pin is flush with housing. Install adjusting nut on other end of adjusting screw.
5. If possible, load should be parallel to take-up screw.

**WARNING:** Because of the possible danger to person(s) or property from accidents which may result from the improper use of products, it is important that correct procedures be followed. Products must be used in accordance with the engineering information specified in the catalog. Proper installation, maintenance and operation procedures must be observed. The instructions in the instruction manuals must be followed. Inspections should be made as necessary to assure safe operation under prevailing conditions. Proper guards and other suitable safety devices or procedures as may be desirable or as may be specified in safety codes should be provided, and are neither provided by Dodge® nor are the responsibility of Dodge. This unit and its associated equipment must be installed, adjusted and maintained by qualified personnel who are familiar with the construction and operation of all equipment in the system and the potential hazards involved. When risk to persons or property may be involved, a holding device must be an integral part of the driven equipment beyond the speed reducer output shaft.



**Table 1–Bearing Take-Up Frame Parts**

| Assembly Frame | Part Number |        |        |        |
|----------------|-------------|--------|--------|--------|
|                | Frame       | Screw  | Nut    | Pin    |
| 210 x 6        | 039109      | 130140 | 130141 | 409206 |
| 308 x 6        | 039110      | 406118 | 130141 | 409206 |
| 308 x 12       | 038111      | 406120 | 130141 | 409206 |
| 400 x 6        | 039112      | 406104 | 036153 | 409312 |
| 400 x 9        | 039113      | 406122 | 036153 | 409312 |
| 400 x 12       | 038114      | 406108 | 036153 | 409312 |
| 400 x 18       | 038115      | 406124 | 036153 | 409312 |
| 407 x 9        | 039116      | 130149 | 036154 | 409054 |
| 407 x 18       | 039117      | 130150 | 036154 | 409054 |
| 415 x 9        | 039118      | 130149 | 036154 | 409054 |
| 415 x 18       | 039119      | 130150 | 036154 | 409054 |

**Dodge Industrial, Inc.**  
 1061 Holland Road  
 Simpsonville, SC 29681  
 +1 864 297 4800

