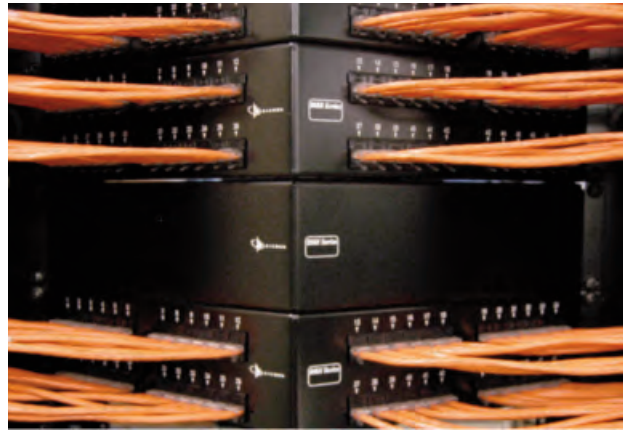


Airflow Management Accessories for Racks and Cabinets

Blanking panels and brush guard panels help to improve thermal efficiency by preventing airflow through vacant rack-mount spaces within enclosures. By isolating the front of the cabinet, these panels keep the cold air directed at the equipment where it is needed. Thermal blanking panels help to prevent recirculation of hot air to improve a facility's cooling effectiveness. These panels also fill empty rack-mount space to conceal openings or reserve the positions for future use. Brush guard panels provide the added benefit of allowing cables to pass through the front and rear of a rack or cabinet while still providing thermal protection to maintain isolation.



SnapFit™ Thermal Blanking Panels

- Durable, lightweight panels
- Cost effective solution for data centers
- Snaps quickly into place without requiring tools
- Fits cabinets and racks with square mounting rail holes
- Easy to remove when space is ready to be used
- 1U height for maximum flexibility



Standard Filler Panels

- Metal panels screw into racks or cabinets
- Blank on one side and Siemon logo on the other
- 1U, 2U, 3U, 4U flat panels
- 1U and 2U angled panels



Brush Guard Panels

- 1U height
- Internal brush to allow cable pass-through



ORDERING INFORMATION

SnapFit™ Thermal Blanking Panels

PNL-TBLNK010-1S.....Toolless blank filler panel, 1U, square holes, black, pkg of 10



Flat Blank Filler Panels

PNL-BLNK-(X) Flat blank filler panel, black
Use (X) to specify height of panel:
1 = 1U, 2 = 2U, 3 = 3U, 4 = 4U



Angled Blank Filler Panels

PNL-BLNKA-(X) Angled blank filler panel, black
Use (X) to specify rack mount space height of panel:
1 = 1U, 2 = 2U



Brush Guard Panel

PNL-BRSH-1.....Brush guard panel, 1U, black



Note: U=44.5mm (1.75 in.)

Because we continuously improve our products, Siemon reserves the right to change specifications and availability without prior notice.

**Worldwide Headquarters
North America**
Watertown, CT USA
Phone (1) 860 945 4200 US
Phone (1) 888 425 6165

**Regional Headquarters
EMEA**
Europe/Middle East/Africa
Surrey, England
Phone (44) 0 1932 571771

**Regional Headquarters
Asia/Pacific**
Shanghai, P.R. China
Phone (86) 21 5385 0303

**Regional Headquarters
Latin America**
Bogota, Colombia
Phone (571) 657 1950