

WIREMOLD® POKE-THRU DEVICES

TURNING  
OPEN SPACE  
INTO OPEN  
POSSIBILITY.



designed to be better.™

 **legrand**®



# THE RIGHT CONNECTIONS

FOR OVER A QUARTER OF A CENTURY.



## INGENUITY. SIMPLICITY. EFFICIENCY.

The Wiremold Poke-Thru Device was an industry first. And an industry inspiration.

From this pioneering innovation sprang countless other industry firsts, such as the fire-rated poke-thru device, the fully recessed poke-thru device and devices meeting UL scrub water requirements for both tile and carpet covered floors. Each of these Wiremold devices revolutionized the industry and set a whole new standard for innovation.

Meanwhile, new ground continues to be broken for both retrofit and new construction – in performance, flexibility and ease-of-installation. In fact, the Evolution™ Series Poke-Thru Device offers fully recessed poke-thru devices with twice the standard capacity, plus a number of other breakthrough features.

## EASY. STYLE. INNOVATION.

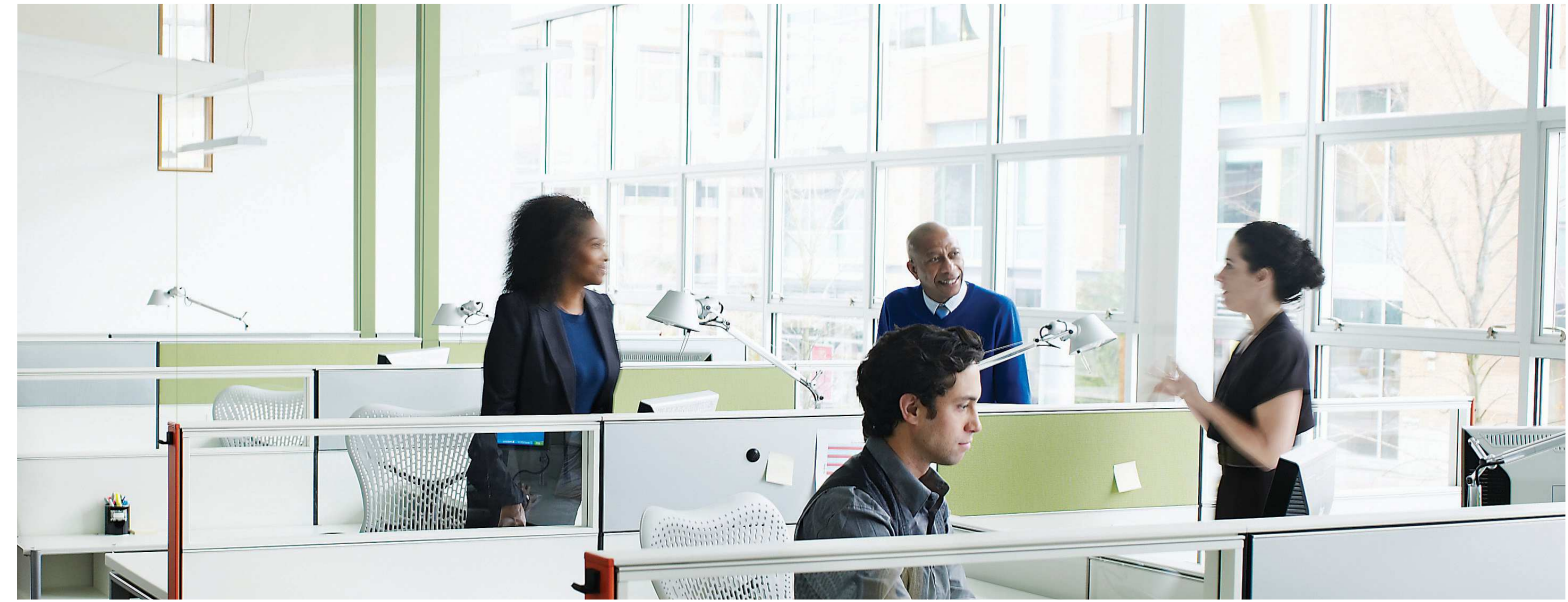
Wiremold Poke-Thru Devices provide fiber optic capability, Category 6 connectors and compatibility with a variety of devices from a number of manufacturers. “Step-on-it” installation makes it simple to wire connections at floor level and set the poke-thru device without special tools.

Ease of installation has never sacrificed durability. Surface style poke-thru devices employ slide covers instead of flip lids. This innovation keeps water, dirt and debris out of power and communications compartments while still meeting UL standards for electrical listing and fire classification.

Wiremold Poke-Thru Devices offer the widest range of solutions to meet any application. So whether you choose an off-the-shelf product, or a solution engineered to your exact specifications, Legrand is the premier, cost-effective provider for poke-thru devices that bring power, communications and A/V wiring to your open space environment.



# WHY A POKE-THRU DEVICE?



Poke-thru devices offer a flexible, cost-effective way to bring power, communications and A/V wiring to open space environments without compromising workplace aesthetics. An excellent choice for both new construction and retrofit applications, they're ideal for modular furniture and open space workstations, as well as specialized spaces, such as conference rooms and training centers.

Poke-thru devices allow services to be placed precisely where they are needed on above-grade concrete floors, while maintaining the floor's fire rating. This fire protection is achieved through the use of a fire-stopping, intumescent material which expands when exposed to high temperatures, effectively sealing the hole in the concrete slab.

Poke-thru devices can be configured in two-, three-, four-, six- or eight-inch diameter holes, and in a variety of slab depths.

## TOPGUARD™ PROTECTION

Each poke-thru device exceeds the UL scrub water exclusion requirement.

## "STEP-ON-IT" INSTALLATION

Quick and easy installation eliminates the need for additional fasteners or a second installer.

## MEETS ADA ACCESSIBILITY GUIDELINES

The wide trim flange on each poke-thru device meets ADA Accessibility Guidelines as they pertain to ADA Standard 4.5, which addresses changes in floor and ground surface levels. Flanges are beveled so the slope is no greater than a 1:2 ratio.

## SUITABLE FOR USE IN AIR HANDLING SPACES

In accordance with Sec. 300-22(C) of the National Electrical Code.

## UL LISTED AND UL FIRE CLASSIFIED TO U.S. AND CANADIAN SAFETY STANDARDS FOR A VARIETY OF FLOOR COVERINGS

Includes the UL requirements under UL514A and UL514C for scrub water exclusion test for carpet, tile and wood covered floors.



AN INDUSTRY FIRST:

# HIGHEST CAPACITY RECESSED

POKE-THRU DEVICE.



Evolution™ Series Poke-Thru Devices are the biggest, toughest and smartest poke-thru line in the industry. These new models provide larger capacity options and a number of breakthrough features. As a UL-approved Open System, you can spec Evolution Series Poke-Thru Devices with any communications, audio/video or power you require. Plus, a flush style cover for tile applications makes it ideal for high-traffic areas.

## 4AT, 6AT, 8AT, & 10AT POKE-THRU DEVICES

- 4", 6", 8" and 10" configurations
- Die-cast aluminum cover built to withstand demanding environments
- Brass, gray, black, nickel, bronze and aluminum cover finishes that blend with any décor
- Intumescent material that maintains a fire rating of a 2-hour classified floor
- Covers that open up a full 180°
- Slide doors that keep wires, connections and people safe
- Fully finished interior
- Designed to accept audio/video devices from leading manufacturers
- Devices recessed below floor level
- Works with Pass & Seymour® Wireless RF receptacles to control plug loads up to a distance of 30 feet when the cover is closed

## 6PPS & 8PPS PRE-POUR SLEEVES

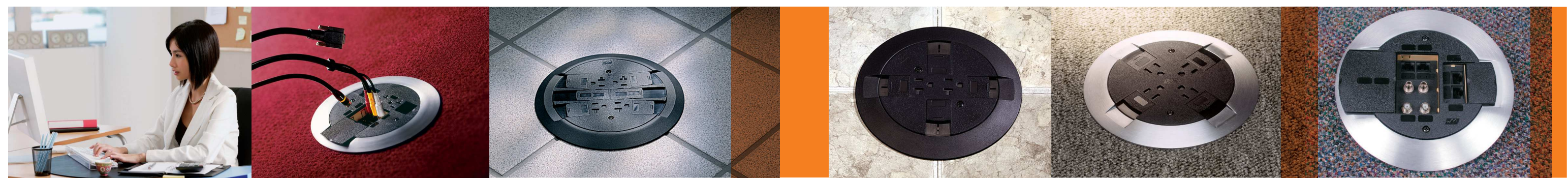
- Available in 4", 6", 8" and 10" diameters
- Creates a removable, cast-in-place opening which allows the location of the poke-thru devices to be determined before the concrete pour
- Allows for quicker installation and reduced project costs





# SURFACE STYLE

## POKE-THRU DEVICES.



Surface style poke-thru devices offer maximum capacity, for power, communications and A/V services at floor level, providing optimum protection and device longevity. These devices feature prewired power receptacles, TopGuard™ protection to keep out dirt and water and individual slide covers that snap back into place to protect power, communications and A/V devices. The receptacles provided can also be wired in the field as standard or isolated ground. Cover finishes include black, gray, aluminum, brass and ivory. Compatible with Ortronics® TracJack® and Series II modular inserts.

**THE AV3 SERIES** has been specifically designed to meet the growing needs of the audio and video market.

- Offers a 20A duplex power receptacle
- Provides up to four ports for communications devices or three locations for Legrand AVIP Series devices or Extron® Electronics MAAP Series

**THE RC4 SERIES** is a device designed to deliver maximum power and communications services directly to workstations.

- Features two prewired 20A duplex power receptacles
- Provides up to four ports of communications devices

**THE RC7 SERIES** eliminates the need for a second device by delivering both power and communications services directly to workstations.

- Offers a 20A duplex power receptacle
- Provides up to two ports of communications devices

**THE RC9 SERIES** is a cost-effective way to provide maximum power-only capacity.

- Offers a prewired 15A quad receptacle

**THE AMD8 SERIES** is designed to meet the growing need for more communications capacity at the workstation.

- Features all-communications capabilities
- Provides up to eight ports for communications devices



# FURNITURE FEED POKE-THRU DEVICES.



Furniture feed style poke-thru devices are an ideal solution for feeding both power and communications services to modular furniture systems in open space, above-grade floor environments. They are excellent for use in carpet, tile, wood and laminate floors and are UL listed for both power, communications and/or audio/video furniture feed applications. In addition, every device comes with built-in TopGuard protection.



**THE RC9AFFTC SERIES** is a large, dual service device that provides power and communications services in one unit.

- Available in black and gray
- Hexagonal housing provides six openings for power and communications
- Allows communications and power cables to be conduit protected

**THE 4FFATC15 SERIES** is a high capacity, dual-service device designed for furniture feed applications.

- Available in black, gray, brass and aluminum finishes
- Provides one 3/4" opening for power and one 1 1/2" opening for communications cabling

**THE RC9AM2TC SERIES** reduces overall project costs by eliminating the need for additional poke-thru devices in high capacity, modular furniture applications.

- Available in black, gray and aluminum finishes
- Provides a combination 1 1/4" and 2" trade size conduit opening in the cover
- Accepts up to 36 UTP
- 2" trade size conduit feed

**THE 6ATCFF EVOLUTION POKE-THRU DEVICE** offers the largest dual service furniture feed capability on the market.

- Designed for 6" core holes
- Features a die-cast aluminum cover in painted black, gray, nickel, brass and bronze
- Power Capacity #10 AWG Conductors
- Communications Capacity = 28 Cat 6A Cables

**THE RC91GHBTC AND RC926HBTC SERIES PEDESTAL POKE-THRU DEVICES** offer a choice of single- or double-width, pedestal style service heads to accommodate the specific power and communications needs of your office environment.

- Available in aluminum finish
- Single-width offers both power and communications services in a space-saving package
- The double-width pedestal is a great solution when greater capacity is needed
- Service fittings accept a wide variety of faceplates for greater aesthetic flexibility

designed to be better.™



Electrical Wiring Systems  
60 Woodlawn Street  
West Hartford, CT 06110  
1.877.BY.LEGRAND (295.3472)  
[www.legrand.us](http://www.legrand.us)

Canada  
1.800.723.5175; 905.738.9195  
[www.legrand.ca](http://www.legrand.ca)

FOLLOW US

