

# Mulberry Single Gang Box

*The most versatile weatherproof box in the industry*

Superior Quality • U.S. Made • ARRA Compliant

## Rotating Lugs

Permanently Attached  
Lugs rotate for maximum  
mounting versatility—  
available when needed or  
out of the way when not.

## Superior Powder Finish

State-of-the-art powder coat  
paint finish assures maximum  
weatherability.

Available in Gray, White,  
Bronze or Black.



Cat. No. 30203

## Easy Access Ground Screw

Tapped ground screw hole conveniently located along the surface  
of our mounting strap provides easier ground screw installation.

## Heavy-Duty Mounting Straps

Reinforced and securely fastened  
mounting straps provide the most  
durable design in the industry.

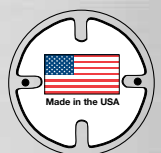
Patented mounting design allows strap  
to exceed all applicable UL pull-tests.  
(U.S. Patent No. 7,232,951)

## Permanently Attached Lugs

No more detachable lugs!

Never drop, lose or install  
a lug again.

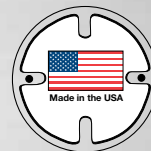
Speeds installation!



# 1-Gang Boxes

*Suitable for wet locations*

- For use in branch circuit wiring in wet, damp or dry locations.
- All 1-gang boxes available with or without mounting lugs.
- When lugs are made available, they are permanently attached and swivel for maximum mounting versatility.
- Pre-tapped ground screw hole is easily accessible and located along the surface of the mounting strap.
- Heavy duty mounting straps exceed all UL pull-tests.
- Made from heavy-duty die-cast aluminum; .094 inches thick.
- 4.5 in. high x 2.75 in. wide x 2.0 in. deep.
- Superior powder coat finish assures maximum weatherability.
- Ground screw and 2 close-up plugs come with each box.
- UL Listed, NEMA 3R Rated.
- All of the boxes on pages B4 and B5 are made in the U.S.A.

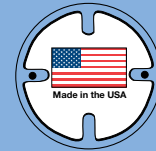


## With Permanently Attached Mounting Lugs

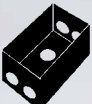
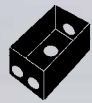
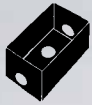
Catalog No.	No. Outlets	Location	Hub Size	Color	Lugs	Cubic Capacity	Carton Quantity	Weight per 100 units
<b>30203</b>	3	1 in each end, 1 in back	1/2"	Gray	Yes	18.3	25	52 lbs.
<b>30203B</b>	3	1 in each end, 1 in back	1/2"	Black	Yes	18.3	25	52 lbs.
<b>30203W</b>	3	1 in each end, 1 in back	1/2"	White	Yes	18.3	25	52 lbs.
<b>30203Z</b>	3	1 in each end, 1 in back	1/2"	Bronze	Yes	18.3	25	52 lbs.
<b>30206</b>	3	1 in each end, 1 in back	3/4"	Gray	Yes	18.3	25	60 lbs.
<b>30206W</b>	3	1 in each end, 1 in back	3/4"	White	Yes	18.3	25	60 lbs.
<b>30206Z</b>	3	1 in each end, 1 in back	3/4"	Bronze	Yes	18.3	25	60 lbs.
<b>30209</b>	4	2 in 1 end, 1 in the other, 1 in back	1/2"	Gray	Yes	18.0	25	60 lbs.
<b>30209W</b>	4	2 in 1 end, 1 in the other, 1 in back	1/2"	White	Yes	18.0	25	60 lbs.
<b>30209Z</b>	4	2 in 1 end, 1 in the other, 1 in back	1/2"	Bronze	Yes	18.0	25	60 lbs.
<b>30212</b>	4	2 in 1 end, 1 in the other, 1 in back	3/4"	Gray	Yes	18.0	25	58 lbs.
<b>30212W</b>	4	2 in 1 end, 1 in the other, 1 in back	3/4"	White	Yes	18.0	25	58 lbs.
<b>30212Z</b>	4	2 in 1 end, 1 in the other, 1 in back	3/4"	Bronze	Yes	18.0	25	58 lbs.
<b>30215</b>	5	2 in each end, 1 in back	1/2"	Gray	Yes	18.0	25	60 lbs.
<b>30215W</b>	5	2 in each end, 1 in back	1/2"	White	Yes	18.0	25	60 lbs.
<b>30215Z</b>	5	2 in each end, 1 in back	1/2"	Bronze	Yes	18.0	25	60 lbs.
<b>30218</b>	5	2 in each end, 1 in back	3/4"	Gray	Yes	18.0	25	56 lbs.
<b>30221</b>	5	1 in each end, 1 each side, 1 in back	1/2"	Gray	Yes	18.0	25	60 lbs.
<b>30224</b>	5	1 in each end, 1 each side, 1 in back	3/4"	Gray	Yes	18.0	25	58 lbs.
<b>30227</b>	6	1 in each end, 2 in 1 side, 1 in other side, 1 in back	1/2"	Gray	Yes	18.0	25	62 lbs.
<b>30228</b>	6	1 in each end, 2 in 1 side, 1 in other side, 1 in back	3/4"	Gray	Yes	18.0	25	58 lbs.

# 1-Gang Boxes

Suitable for wet locations



## Without Mounting Lugs

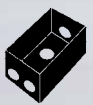
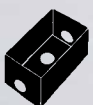
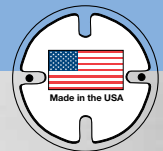
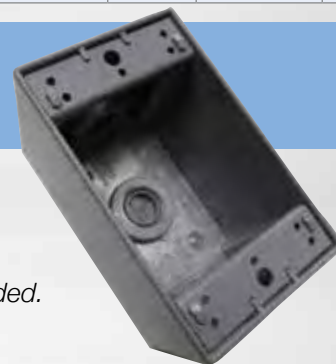


Catalog No.	No. Outlets	Location	Hub Size	Color	Lugs	Cubic Capacity	Carton Quantity	Weight per 100 units
<b>30201</b>	3	1 in each end, 1 in back	1/2"	Gray	No	18.3	25	52 lbs.
<b>30201B</b>	3	1 in each end, 1 in back	1/2"	Black	No	18.3	25	52 lbs.
<b>30201W</b>	3	1 in each end, 1 in back	1/2"	White	No	18.3	25	52 lbs.
<b>30201Z</b>	3	1 in each end, 1 in back	1/2"	Bronze	No	18.3	25	52 lbs.
<b>30204</b>	3	1 in each end, 1 in back	3/4"	Gray	No	18.3	25	60 lbs.
<b>30204W</b>	3	1 in each end, 1 in back	3/4"	White	No	18.3	25	60 lbs.
<b>30204Z</b>	3	1 in each end, 1 in back	3/4"	Bronze	No	18.3	25	60 lbs.
<b>30207</b>	4	2 in 1 end, 1 in the other, 1 in back	1/2"	Gray	No	18	25	60 lbs.
<b>30207W</b>	4	2 in 1 end, 1 in the other, 1 in back	1/2"	White	No	18	25	60 lbs.
<b>30207Z</b>	4	2 in 1 end, 1 in the other, 1 in back	1/2"	Bronze	No	18	25	60 lbs.
<b>30210</b>	4	2 in 1 end, 1 in the other, 1 in back	3/4"	Gray	No	18	25	58 lbs.
<b>30210W</b>	4	2 in 1 end, 1 in the other, 1 in back	3/4"	White	No	18	25	58 lbs.
<b>30210Z</b>	4	2 in 1 end, 1 in the other, 1 in back	3/4"	Bronze	No	18	25	58 lbs.
<b>30213</b>	5	2 in each end, 1 in back	1/2"	Gray	No	18	25	60 lbs.
<b>30213W</b>	5	2 in each end, 1 in back	1/2"	White	No	18	25	60 lbs.
<b>30213Z</b>	5	2 in each end, 1 in back	1/2"	Bronze	No	18	25	60 lbs.
<b>30216</b>	5	2 in each end, 1 in back	3/4"	Gray	No	18	25	56 lbs.
<b>30219</b>	5	1 in each end, 1 each side, 1 in back	1/2"	Gray	No	18	25	60 lbs.
<b>30222</b>	5	1 in each end, 1 each side, 1 in back	3/4"	Gray	No	18	25	58 lbs.
<b>30226</b>	6	1 in each end, 2 in 1 side, 1 in other side, 1 in back	1/2"	Gray	No	18	25	62 lbs.

## 1-Gang Deep Boxes

Suitable for wet locations

- For use in branch circuit wiring in wet, damp or dry locations.
- Made from heavy duty die-cast aluminum, .094" thick.
- 4.5 in. high x 2.75 in. wide x 2.625 in. deep.
- Superior powder coat finish assures maximum weatherability.
- Detachable lugs, 2 close-up plugs and self-tapping ground screw included.
- c-UL-us listed for use in the United States and Canada.
- NEMA 3R Rated.
- All of the boxes on this page are made in the U.S.A.

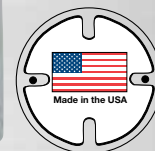


Catalog No.	No. Outlets	Location	Hub Size	Color	Cubic Capacity	Carton Quantity	Weight per 100 units
<b>30583</b>	3	1 in each end, 1 in back	1/2"	Gray	24.0	10	90 lbs.
<b>30584</b>	3	1 in each end, 1 in back	3/4"	Gray	24.0	10	90 lbs.
<b>30589</b>	3	1 in each end, 1 in back	1"	Gray	24.0	10	90 lbs.
<b>30586</b>	4	2 in 1 end, 1 in the other, 1 in back	1/2"	Gray	24.0	10	90 lbs.
<b>30587</b>	4	2 in 1 end, 1 in the other, 1 in back	3/4"	Gray	24.0	10	90 lbs.

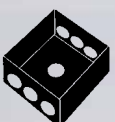
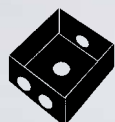
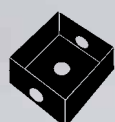


# 2-Gang Lug Boxes

*Suitable for wet locations*



- For use in branch circuit wiring in wet, damp or dry locations.
- Made from heavy-duty die-cast aluminum; .094 inches thick.
- 4.5 in. high x 4.5 in. wide x 2.0 in. deep.
- Superior powder coat finish assures maximum weatherability.
- Detachable lugs, 2 close-up plugs and self-tapping ground screw included.
- c-UL-us listed for use in the United States and Canada.
- NEMA 3R Rated.
- All of the 2-gang boxes on this page are made in the U.S.A.



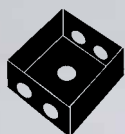
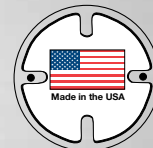
Catalog No.	No. Outlets	Location	Hub Size	Color	Cubic Capacity	Carton Quantity	Weight per 100 units
<b>30233</b>	3	1 in each end, 1 in back	1/2"	Gray	30.5"	10	110 lbs.
<b>30233W</b>	3	1 in each end, 1 in back	1/2"	White	30.5"	10	110 lbs.
<b>30233Z</b>	3	1 in each end, 1 in back	1/2"	Bronze	30.5"	10	110 lbs.
<b>30236</b>	3	1 in each end, 1 in back	3/4"	Gray	30.5"	10	110 lbs.
<b>30236W</b>	3	1 in each end, 1 in back	3/4"	White	30.5"	10	110 lbs.
<b>30236Z</b>	3	1 in each end, 1 in back	3/4"	Bronze	30.5"	10	110 lbs.
<b>30267</b>	3	1 in each end, 1 in back	1"	Gray	30.5"	10	110 lbs.
<b>30267W</b>	3	1 in each end, 1 in back	1"	White	30.5"	10	110 lbs.
<b>30267Z</b>	3	1 in each end, 1 in back	1"	Bronze	30.5"	10	110 lbs.
<b>30239</b>	4	2 in one end, 1 in other end, 1 in back	1/2"	Gray	30.5"	10	110 lbs.
<b>30239W</b>	4	2 in one end, 1 in other end, 1 in back	1/2"	White	30.5"	10	110 lbs.
<b>30239Z</b>	4	2 in one end, 1 in other end, 1 in back	1/2"	Bronze	30.5"	10	110 lbs.
<b>30242</b>	4	2 in one end, 1 in other end, 1 in back	3/4"	Gray	30.5"	10	110 lbs.
<b>30245</b>	5	2 in each end, 1 in back	1/2"	Gray	30.5"	10	110 lbs.
<b>30245W</b>	5	2 in each end, 1 in back	1/2"	White	30.5"	10	110 lbs.
<b>30245Z</b>	5	2 in each end, 1 in back	1/2"	Bronze	30.5"	10	110 lbs.
<b>30248</b>	5	2 in each end, 1 in back	3/4"	Gray	30.5"	10	110 lbs.
<b>30251</b>	5	1 in each end, 1 in each side, 1 in back	1/2"	Gray	30.5"	10	110 lbs.
<b>30254</b>	5	1 in each end, 1 in each side, 1 in back	3/4"	Gray	30.5"	10	110 lbs.
<b>30270</b>	5	1 in each end, 1 in each side, 1 in back	1"	Gray	30.5"	10	110 lbs.
<b>30257</b>	6	2 in one end, 1 in other end, 1 in each side, 1 in back	1/2"	Gray	30.5"	10	110 lbs.
<b>30260</b>	6	2 in one end, 1 in other end, 1 in each side, 1 in back	3/4"	Gray	30.5"	10	110 lbs.
<b>30263</b>	7	2 in each end, 1 in each side, 1 in back	1/2"	Gray	30.5"	10	110 lbs.
<b>30266</b>	7	2 in each end, 1 in each side, 1 in back	3/4"	Gray	30.5"	10	110 lbs.
<b>30269</b>	7	3 in each end, 1 in back	1/2"	Gray	30.5"	10	110 lbs.
<b>30272</b>	7	3 in each end, 1 in back	3/4"	Gray	30.5"	10	110 lbs.



# 2-Gang Deep Boxes

*Suitable for wet locations*

- For use in branch circuit wiring in wet, damp or dry locations.
- Made from heavy-duty die-cast aluminum; .094 inches thick.
- 4.5 in. high x 4.5 in. wide x 2.625 in. deep.
- Superior powder coat finish assures maximum weatherability.
- Detachable lugs, 2 close-up plugs and self-tapping ground screw included.
- c-UL-us listed for use in the United States and Canada.
- NEMA 3R Rated.
- All of the boxes on this page are made in the U.S.A.

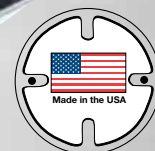
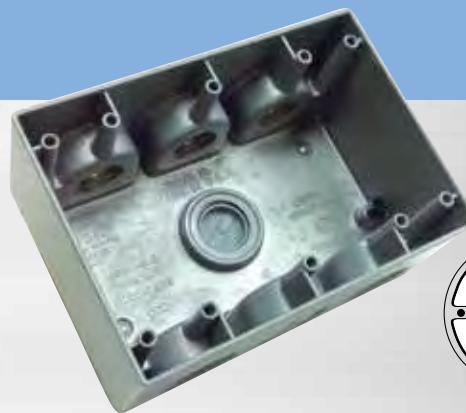


Catalog No.	No. Outlets	Location	Hub Size	Color	Cubic Capacity	Carton Quantity	Weight per 100 units
<b>30593</b>	5	2 in each end, 1 in back	1/2"	Gray	37.3"	10	130 lbs.
<b>30595</b>	5	2 in each end, 1 in back	3/4"	Gray	37.3"	10	130 lbs.
<b>30596</b>	5	2 in each end, 1 in back	1"	Gray	37.3"	10	130 lbs.
<b>30597</b>	7	2 in each end, 1 in each side, 1 in back	1/2"	Gray	37.3"	10	130 lbs.
<b>30598</b>	7	2 in each end, 1 in each side, 1 in back	3/4"	Gray	37.3"	10	130 lbs.
<b>30599</b>	7	2 in each end, 1 in each side, 1 in back	1"	Gray	37.3"	10	130 lbs.

# 3-Gang Deep Boxes

*Suitable for wet locations*

- For use in branch circuit wiring in wet, damp or dry locations.
- Made from heavy-duty die-cast aluminum; .094 inches thick.
- 4.5 in. high x 6.375 in. wide x 2.625 in. deep.
- Superior powder coat finish assures maximum weatherability.
- Detachable lugs, 2 close-up plugs and self-tapping ground screw included.
- c-UL-us listed for use in the United States and Canada.
- NEMA 3R Rated.
- All of the boxes on this page are made in the U.S.A.

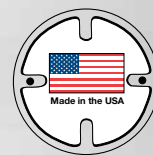


Catalog No.	No. Outlets	Location	Hub Size	Color	Cubic Capacity	Carton Quantity	Weight per 100 units
<b>30601</b>	7	3 in each end, 1 in back	3/4"	Gray	59.8"	10	150 lbs.
<b>30603</b>	7	3 in each end, 1 in back	1"	Gray	59.8"	10	150 lbs.

# 4" Round Boxes and Extensions

*Suitable for wet locations*

- For use in branch circuit wiring in wet, damp or dry locations.
- Boxes and extensions 1-1/2" deep.
- All round boxes have 5 outlets; extensions have 4.
- Made from heavy-duty die-cast aluminum; .094 inches thick.
- Superior powder coat finish assures maximum weatherability.
- Boxes supplied with 4 close-up plugs and #10 green ground screw.
- Extensions supplied with gasket, 4 close-up plugs, 2 stainless steel mounting screws, and #10 green ground screw.
- c-UL-us listed for use in the United States and Canada.
- All round boxes and extensions are made in the U.S.A.



Catalog No.	Location	Hub Size	Color	Cubic Capacity	Box only or w/Gasket & Cover	Carton Quantity	Weight per 100 units
<b>30316</b>	4 in sides end 1 in back	1/2"	Gray	15.3"	Box	10	70 lbs.
<b>30316B</b>	4 in sides end 1 in back	1/2"	Black	15.3"	Box	10	70 lbs.
<b>30316W</b>	4 in sides end 1 in back	1/2"	White	15.3"	Box	10	70 lbs.
<b>30316Z</b>	4 in sides end 1 in back	1/2"	Bronze	15.3"	Box	10	70 lbs.
<b>30318</b>	4 in sides end 1 in back	1/2"	Gray	15.3"	With gasket & cover	10	80 lbs.
<b>30318W</b>	4 in sides end 1 in back	1/2"	White	15.3"	With gasket & cover	10	80 lbs.
<b>30318Z</b>	4 in sides end 1 in back	1/2"	Bronze	15.3"	With gasket & cover	10	80 lbs.
<b>30326</b>	4 in sides end 1 in back	3/4"	Gray	15.3"	Box	10	70 lbs.
<b>30326W</b>	4 in sides end 1 in back	3/4"	White	15.3"	Box	10	70 lbs.
<b>30326Z</b>	4 in sides end 1 in back	3/4"	Bronze	15.3"	Box	10	70 lbs.
<b>30328</b>	4 in sides end 1 in back	3/4"	Grey	15.3"	With gasket & cover	10	84 lbs.
<b>30328W</b>	4 in sides end 1 in back	3/4"	White	15.3"	With gasket & cover	10	84 lbs.
<b>30328Z</b>	4 in sides end 1 in back	3/4"	Bronze	15.3"	With gasket & cover	10	84 lbs.
<b>30333</b>	4 in sides	1/2"	Gray	15.3"	Box extension	10	60 lbs.
<b>30335</b>	4 in sides	3/4"	Gray	15.3"	Box extension	10	60 lbs.

## Swimming Pool Junction Boxes

- Meet NEC Article 680 requirements.
- Solid brass base and specially formulated gasket.
- Lexan 503® nonconductive, watertight cover, UV-stabilized.
- Four grounding posts (green screws).
- Continuous sealing ridge keeps interior dry.
- Four brass mounting screws; hardware included.

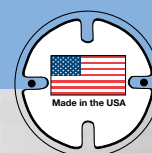
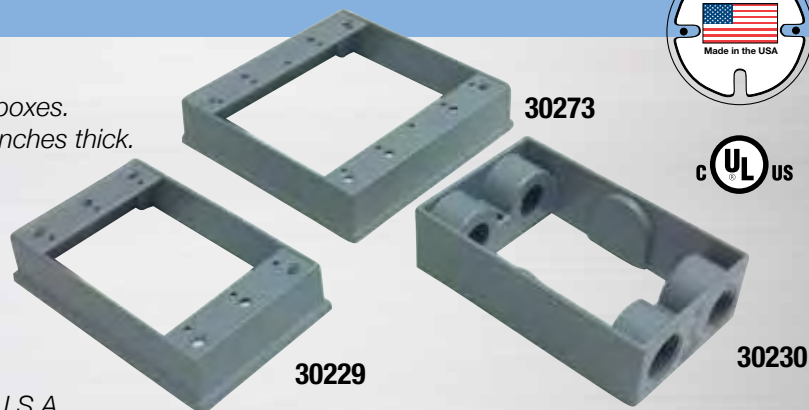
Catalog No.	No./Hub Sizes	Cubic Capacity	Carton Quantity	Weight per 100 units
<b>30385</b>	3-1/2" hubs	22.0"	12	155 lbs.
<b>30387</b>	2-3/4" hubs, 1-1" hub	22.0"	12	155 lbs.
<b>30389</b>	3-3/4" hubs	22.0"	12	155 lbs.



# Box Extensions

*Suitable for wet locations*

- Fit all universal-type 1 and 2-gang weatherproof boxes.
- Made from heavy-duty die-cast aluminum; .094 inches thick.
- Superior powder coat finish assures maximum weatherability.
- Gasket and mounting screws included.
- Nos. 30230, 30287, 30295 and 30296 each come with 2 close-up plugs.
- c-UL-us listed for use in the United States and Canada.
- All box extensions on this page are made in the U.S.A.

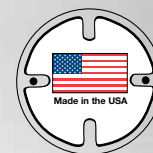


Catalog No.	No. of Gangs	Dimensions	Outlets	Color	Cubic Capacity	Carton Quantity	Weight per 100 units
<b>30229</b>	1	2.75" x 4.5" x 1.0"	None	Gray	9.3"	25	28 lbs.
<b>30229W</b>	1	2.75" x 4.5" x 1.0"	None	White	9.3"	25	28 lbs.
<b>30229Z</b>	1	2.75" x 4.5" x 1.0"	None	Bronze	9.3"	25	28 lbs.
<b>30273</b>	2	4.5" x 4.5" x 1.0"	None	Gray	16.3"	10	50 lbs.
<b>30273W</b>	2	4.5" x 4.5" x 1.0"	None	White	16.3"	10	50 lbs.
<b>30273Z</b>	2	4.5" x 4.5" x 1.0"	None	Bronze	16.3"	10	50 lbs.
<b>30230</b>	1	2.75" x 4.5" x 1.25"	Four 1/2" outlets, 2 in each end	Gray	9.5"	25	54 lbs.
<b>30287</b>	1	2.75" x 4.5" x 1.25"	Four 3/4" outlets, 2 in each end	Gray	9.5"	25	55 lbs.
<b>30295</b>	1	2.75" x 4.5" x 1.25"	Six 1/2" outlets, 2 in each end and 1 in each side	Gray	9.5"	25	52 lbs.
<b>30296</b>	1	2.75" x 4.5" x 1.25"	Six 3/4" outlets, 2 in each end and 1 in each side	Gray	9.5"	25	44 lbs.

## Flanged Style Take-Off Extensions

*Suitable for wet locations*

- Provide an additional 10 cubic inches.
- Allow take-off in up to four directions for lighting, outlets, or switches.
- Made from heavy duty die-cast aluminum.
- Superior powder coat finish assures maximum weatherability.
- 2 close-up plugs, gaskets, and mounting screws included.
- c-UL-us listed for use in the United States and Canada.



Catalog No.	No. of Outlets	Cubic Capacity	Carton Quantity	Weight per 100 units
<b>30274</b>	Four 1/2" outlets, 2 in each end	10.0"	10	70 lbs.
<b>30288</b>	Four 3/4" outlets, 2 in each end	10.0"	10	70 lbs.
<b>30275</b>	Six 1/2" outlets, 2 in each end and 1 in each side	10.0"	10	70 lbs.
<b>30289</b>	Six 3/4" outlets, 2 in each end and 1 in each side	10.0"	10	70 lbs.





# **Weathersafe® III Extra-Duty In-Use Covers**



**White**

**Gray**

**Bronze**

**Testing/Code Compliance:** All WeatherSafe® III covers comply with the 2014 NEC Article 406.9 (B) (1) Extra Duty requirements. They are UL Listed and meet the requirements for a NEMA 3R rating.

**Horizontal/Vertical Orientation:** These 1-gang in-use covers mount horizontally or vertically, allowing you to stock fewer SKUs (our 2-gang in-use cover mounts vertically only).

**Snap-On Inserts:** Our 1-gang in-use cover comes with an individual duplex and an individual GFI snap-on insert. Plus, another insert for either a toggle or three single receptacle sizes (1-1/4", 1-3/8" and 1-9/16" in diameter). Easy to attach.

Our 2-gang in-use WeatherSafe® provides up to 31 configurations.

**Meets "Extra Duty" NEC Code requirement!**



**with easy to attach snap-on inserts**

Cat. No.	Gang	Depth	Openings	Description	Color
<b>30981</b>	1	2-3/4"	Duplex, GFI, Toggle, 1-1/4", 1-3/8" and 1-9/16" round openings.	1-gang in-use cover, Extra-Duty; combination horizontal/vertical orientation, with three inserts.	Clear/Gray Base
<b>30981W</b>	1	2-3/4"	Duplex, GFI, Toggle, 1-1/4", 1-3/8" and 1-9/16" round openings.	1-gang in-use cover, Extra-Duty; combination horizontal/vertical orientation, with three inserts.	White
<b>30981Z</b>	1	2-3/4"	Duplex, GFI, Toggle, 1-1/4", 1-3/8" and 1-9/16" round openings.	1-gang in-use cover, Extra-Duty; combination horizontal/vertical orientation, with three inserts.	Bronze
<b>30981G</b>	1	2-3/4"	Duplex, GFI, Toggle, 1-1/4", 1-3/8" and 1-9/16" round openings.	1-gang in-use cover, Extra-Duty; combination horizontal/vertical orientation, with three inserts.	Gray
<b>30984</b>	1	3-1/4"	Duplex, GFI, Toggle, 1-1/4", 1-3/8" and 1-9/16" round openings.	1-gang deep in-use cover, Extra-Duty; combination horizontal/vertical orientation, with three inserts.	Clear/Gray Base
<b>30982</b>	2	2-3/4"	(2) Duplex, (2) GFI, (2) Toggle, 1-1/4", 1-3/8" and 1-9/16" round openings. Plus, (1) 2-gang insert with Toggle, 1-1/4", 1-3/8", 1-9/16", 1-5/8", 1-11/16", 2-1/8", 2-1/4" and 2-7/16" round openings.	2-gang in-use cover, Extra-Duty; combination vertical orientation, with seven inserts.	Clear/Gray Base





# Expandable Extra-Duty In-Use Covers



**30983G**

**Clear**



**30983W**

**White**



**30983Z**

**Bronze**

- Meets or exceeds all NEC requirements for an Extra-Duty rating.
- Mounts either horizontally or vertically.
- Made of durable, UV-stabilized, high-impact polycarbonate.
- Low-profile design; cover expands up to 3 inches.
- Up to 24 configurations available.
- Comes with an adhesive backed gasket and mounting hardware.
- Lockable hasp protects against electrical accidents or tampering.
- Accommodates up to 12 AWG cords.

Cat. No.	Gang	Depth	Openings	Description	Color
<b>30983G</b>	1	1-3/4" to 3"	Duplex, GFI, Toggle, 1-1/8", 1-1/4", 1-3/8", 1-9/16", 1-5/8", 1-11/16" and 2-1/8" round openings.	1-gang low profile, expandable in-use cover, Extra-Duty; combination horizontal/vertical orientation, with three inserts.	Clear/Gray Base
<b>30983W</b>	1	1-3/4" to 3"	Duplex, GFI, Toggle, 1-1/8", 1-1/4", 1-3/8", 1-9/16", 1-5/8", 1-11/16" and 2-1/8" round openings.	1-gang low profile, expandable in-use cover, Extra-Duty; combination horizontal/vertical orientation, with three inserts.	White
<b>30983Z</b>	1	1-3/4" to 3"	Duplex, GFI, Toggle, 1-1/8", 1-1/4", 1-3/8", 1-9/16", 1-5/8", 1-11/16" and 2-1/8" round openings.	1-gang low profile, expandable in-use cover, Extra-Duty; combination horizontal/vertical orientation, with three inserts.	Bronze
<b>30988</b>	2	1-3/4" to 3"	Duplex, GFI, Toggle, 1-1/8", 1-1/4", 1-3/8", 1-9/16", 1-5/8", 1-11/16" and 2-1/8" round openings. Plus, (1) 2-gang insert with Toggle, 1-1/4", 1-3/8", 1-9/16", 1-5/8", 1-11/16", 2-1/8", 2-1/4" and 2-7/16" round openings.	2-gang low profile, expandable in-use cover, Extra-Duty; combination horizontal/vertical orientation, with seven inserts.	Gray

# Die-Cast Aluminum Extra-Duty In-Use Covers

**30985****1-Gang Vertical****30986****1-Gang Horizontal****30987****1-Gang Deep****30989****2-Gang**

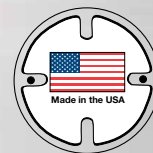
- Heavy-duty die-cast aluminum construction.
- Superior powder coat finish assures maximum weatherability.
- Meets or exceeds all NEC requirements for Extra-Duty rating.
- NEMA 3R rated.
- Comes with an adhesive backed gasket and mounting hardware.
- Lockable hasp protects against electrical accidents or tampering.
- Accommodates up to 12 AWG cords.

Cat. No.	Gang	Depth	Openings	Description	Color
<b>30985</b>	1	3-1/2"	Duplex, GFI, Toggle, 1-1/8", 1-1/4", 1-3/8", 1-9/16", 1-5/8", 1-11/16" and 2-1/8" round openings.	1-gang die-cast aluminum in-use cover, standard depth, Extra-Duty, vertical orientation, with three inserts.	Gray
<b>30986</b>	1	3-1/2"	Duplex, GFI, Toggle, 1-1/8", 1-1/4", 1-3/8", 1-9/16", 1-5/8", 1-11/16" and 2-1/8" round openings.	1-gang die-cast aluminum in-use cover, standard depth, Extra-Duty, horizontal orientation, with three inserts.	Gray
<b>30987</b>	1	4-3/4"	Duplex, GFI, Toggle, 1-1/8", 1-1/4", 1-3/8", 1-9/16", 1-5/8", 1-11/16" and 2-1/8" round openings.	1-gang die-cast aluminum in-use cover, deep, Extra-Duty, vertical orientation, with three inserts.	Gray
<b>30989</b>	2	3-1/2"	Duplex, GFI, Toggle, 1-1/8", 1-1/4", 1-3/8", 1-9/16", 1-5/8", 1-11/16" and 2-1/8" round openings. Plus, (1) 2-gang insert with Toggle, 1-1/4", 1-3/8", 1-9/16", 1-5/8", 1-11/16", 2-1/8", 2-1/4" and 2-7/16" round openings.	2-gang die-cast aluminum in-use cover, standard depth, Extra-Duty, vertical orientation, with seven inserts.	Gray



# Self-Closing 1-Gang Covers

- Made from heavy-duty die-cast zinc.
- Choice of either horizontal or vertical orientation.
- Superior powder coat finish assures maximum weatherability.
- Comes with stainless steel mounting screws and heavy-duty gasket.
- Covers with duplex openings will accept all standard duplex receptacles and similar combination devices.
- Single receptacle covers will accept all standard receptacles and similar combination devices.
- UL Listed, CSA Certified (unless otherwise indicated).
- All covers on this page are made in the U.S.A..



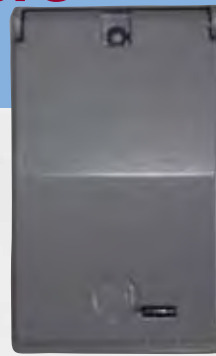
Catalog No.	Opening	Orientation	Color	Carton Quantity	Weight per 100 units
<b>30451†</b>	GFI	Horizontal	Gray	25	44 lbs.
<b>30451W†</b>	GFI	Horizontal	White	25	44 lbs.
<b>30451Z†</b>	GFI	Horizontal	Bronze	25	44 lbs.
<b>30501†</b>	Duplex	Horizontal	Gray	25	40 lbs.
<b>30501U†</b>	Duplex	Horizontal	Natural Cast	25	40 lbs.
<b>30501W†</b>	Duplex	Horizontal	White	25	40 lbs.
<b>30501Z†</b>	Duplex	Horizontal	Bronze	25	40 lbs.
<b>30505</b>	1.405" Single	Horizontal	Gray	25	30 lbs.
<b>30505W</b>	1.405" Single	Horizontal	White	25	30 lbs.
<b>30505Z</b>	1.405" Single	Horizontal	Bronze	25	30 lbs.
<b>30507†</b>	1.620"	Horizontal	Gray	25	30 lbs.
<b>30509</b>	1.405" Single	Vertical	Gray	25	30 lbs.
<b>30509W</b>	1.405" Single	Vertical	White	25	30 lbs.
<b>30509Z</b>	1.405" Single	Vertical	Bronze	25	30 lbs.
<b>30550*</b>	Duplex	Vertical	Gray	25	36 lbs.
<b>30550W*</b>	Duplex	Vertical	White	25	36 lbs.
<b>30550Z*</b>	Duplex	Vertical	Bronze	25	36 lbs.
<b>30552*</b>	1.405" Single	Vertical	Gray	25	36 lbs.
<b>30552W*</b>	1.405" Single	Vertical	White	25	36 lbs.
<b>30552Z*</b>	1.405" Single	Vertical	Bronze	25	36 lbs.
<b>30554*</b>	GFI	Vertical	Gray	25	36 lbs.
<b>30554W*</b>	GFI	Vertical	White	25	36 lbs.
<b>30554Z*</b>	GFI	Vertical	Bronze	25	36 lbs.

\* Solid aluminum base plate with heavy-duty die-cast lid.

† 30451, 30507 & 30501 are c-UL-us for use in the United States and Canada.

# Vertical Self-Closing Covers with Lock Hasps

- Made from heavy duty die-cast aluminum, .094" thick, with stainless steel hinge springs, mounting screws and hinge pin.
- Comes with a durable heavy-duty universal gasket.
- Superior powder coat finish assures maximum weatherability.
- Lock hasp inner diameter 1/4".
- UL Listed, CSA Certified.
- Specials available upon request (for 1-gang custom cover, please use No. 30560).
- All covers on this page are made in the USA. The plug-in receptable that is supplied with our 30513 cover, however, are made offshore.



Catalog No.	Opening/Description	Mounting	Carton Quantity	Weight per 100 units
<b>30522</b> <b>30522W</b> <b>30522Z</b>	All duplex receptacles and combination devices (Also available in white & bronze)	Standard	25	48 lbs.
<b>30523</b>	All duplex receptacles and combination devices	4-screw (FS)	25	48 lbs.
<b>30525</b>	Standard single receptacles (1.405" diam.)	Standard	25	48 lbs.
<b>30526</b>	Standard single receptacles (1.405" diam.)	4-screw (FS)	25	48 lbs.
<b>30528</b>	20A and 30A TL receptacles (1.625" diam.)	Standard	25	48 lbs.
<b>30529</b>	20A and 30A TL receptacles (1.625" diam.)	4-screw (FS)	25	48 lbs.
<b>30531</b>	30A 3- and 4-wire TL receptacles (1.75" diam.)	Standard	25	48 lbs.
<b>30532</b>	30A 3- and 4-wire TL receptacles (1.75" diam.)	4-screw (FS)	25	48 lbs.
<b>30534</b>	30A and 50A range/dryer receptacles (2.125" diam.)	Standard	25	48 lbs.
<b>30535</b>	30A and 50A range/dryer receptacles (2.125" diam.)	4-screw (FS)	25	48 lbs.
<b>30537</b> <b>30537W</b> <b>30537Z</b>	GFI receptacles (Also available in white & bronze)	Standard	25	48 lbs.
<b>30538</b>	GFI receptacles	4-screw (FS)	25	48 lbs.

## Motor Base Receptacle and Self-closing cover for Mobile Homes

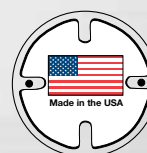
Catalog No.	Opening/Description	Carton Quantity	Weight per 100 units
<b>30513</b>	Horizontal self-closing cover No. 30507 with 2-screw mounting. Comes with receptacle rated at 15A-125V; with male device 30-wire U ground parallel blades.	25	45 lbs.





# Self-Closing 2 - Gang Device Covers

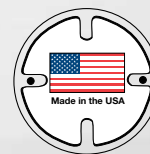
- Solid aluminum base plate with rugged die-cast lids.
- Comes with stainless steel mounting screws and a heavy-duty universal gas-ket.
- Superior powder coat finish assures maximum weatherability.
- The broadest selection of opening combinations in the industry.
- UL Listed and CSA Certified for use in the United States and Canada.
- Custom covers available up to 10-gang in gray, white or bronze with other opening combinations. (For a special 2-gang cover, use No. 30450; for 3-gang, use No. 30460.)
- All of the covers on this page are made in the U.S.A.











Catalog No.	Opening/Description	Carton Quantity	Weight per 100 units
<b>30458</b> <b>30458W</b> <b>30458Z</b>	2 gang duplex: for all duplex receptacles and combination devices (Also available in white and bronze)	10	70 lbs.
<b>30461</b> <b>30461W</b> <b>30461Z</b>	2 gang single receptacle: for all 1.405" singles and toggle switches (Also available in white and bronze)	10	70 lbs.
<b>30452</b> <b>30452W</b> <b>30452Z</b>	2 gang GFI: for all block-style GFI and duplex receptacles (Also available in white and bronze)	10	70 lbs.
<b>30426</b>	2 gang blank/toggle: one side blank, 1 for toggle	10	50 lbs.
<b>30427</b>	2 gang blank/duplex: one side blank, 1 for duplex receptacle	10	50 lbs.
<b>30428</b>	2 gang single receptacle/blank: 1 for 1.405" single receptice, 1 side blank	10	50 lbs.
<b>30429</b>	2 gang blank/GFI: 1 side blank, 1 for GFI receptacle	10	50 lbs.
<b>30468</b>	2 gang duplex/single: for duplex, and single receptacle or switch	10	70 lbs.
<b>30472</b>	2 gang duplex/GFI: for duplex, and block-style GFI or duplex	10	70 lbs.
<b>30470</b>	2 gang single/GFI: for single receptacle, and block-style GFI or duplex	10	70 lbs.
<b>30457</b>	2 gang switch/GFI: for toggle switch, and block-style GFI or duplex	10	70 lbs.
<b>30456</b>	2 gang toggle/duplex: for switch, and duplex. Mounting hardware included	10	80 lbs.
<b>30455</b>	2 gang toggle/duplex: for single pole switch and duplex Switch (rating 5A-250V, 10A-125V) and receptacle (15A-125V) included	10	80 lbs.
<b>30495</b>	2 gang toggle/single: for switch, and pilot light. Mounting hardware included and red jewel installed	10	80 lbs.




## Self-Closing 3 - Gang Device Covers

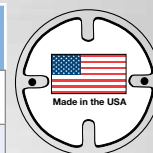
- Solid aluminum base plate with die-cast lids.
- Comes with stainless steel mounting screws and a heavy-duty universal gasket.
- Superior powder coat finish assures maximum weatherability.
- UL Listed and CSA Certified for use in the United States and Canada.
- Custom covers available for up to 10-gang with other opening combinations. (For a special 2-gang cover, use No. 30450; for 3-gang, use No. 30460)
- All of the covers on this page are U.S.-made.



	Catalog No.	Opening/Description	Carton Quantity	Weight per 100 units
	<b>30464</b>	3 gang duplex: for all duplex receptacles and combination devices	10	100 lbs.
	<b>30465</b>	3 gang single receptacle: for all 1.405" singles and toggle switches	10	110 lbs.
	<b>30473</b> <b>30473W</b> <b>30473Z</b>	3 gang GFI: for all block-style GFI and duplex receptacles (Also available in white and bronze)	10	100 lbs.
	<b>30466</b>	3 gang 2 duplex/single: for 2 duplexes, and single receptacle or switch	10	100 lbs.
	<b>30467</b>	3 gang duplex/2 single: for duplex, and 2 single receptacles or switches	10	110 lbs.
	<b>30475</b>	3 gang 2 single/GFI: for 2 singles or switches, and 1 block-style receptacle	10	100 lbs.
	<b>30477</b>	3 gang single/2 GFI: for single or switch, and 2 block-style receptacles	10	100 lbs.
	<b>30479</b>	3 gang 2 toggle/duplex: for 2 switches, and one duplex receptacle. Mounting hardware included	10	80 lbs.

## Self-Closing 4, 5 and 6 - Gang Device Covers

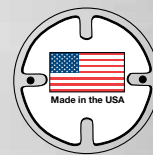
	Catalog No.	Opening/Description	Color	Carton Quantity	Weight per 100 units
	<b>30404</b>	4-gang GFI: for all block-style GFI and duplex openings	Gray	1	100 lbs.
	<b>30404W</b>	4-gang GFI: for all block-style GFI and duplex openings	White	1	110 lbs.
	<b>30404Z</b>	4-gang GFI: for all block-style GFI and duplex openings	Bronze	1	110 lbs.
	<b>30405</b>	5-gang GFI: for all block-style GFI and duplex openings	Gray	1	100 lbs.
	<b>30405W</b>	5-gang GFI: for all block-style GFI and duplex openings	White	1	110 lbs.
	<b>30405Z</b>	5-gang GFI: for all block-style GFI and duplex openings	Bronze	1	100 lbs.
	<b>30406</b>	6-gang GFI: for all block-style GFI and duplex openings	Gray	1	100 lbs.
	<b>30406W</b>	6-gang GFI: for all block-style GFI and duplex openings	White	1	100 lbs.
	<b>30406Z</b>	6-gang GFI: for all block-style GFI and duplex openings	Bronze	1	100 lbs.



# 4" Round Covers

*Suitable for wet locations*

- Made from rugged die-cast zinc.
- Blank covers (30381 Series) made from heavy-duty stamped aluminum.
- Superior powder coat paint finish provides maximum weatherability.
- Choice of either gray, black, white or bronze finish in 1, 2 or 3 hole configurations.
- All round covers come with a gasket and stainless steel mounting screws.
- 3-hole covers include 1 close-up plug.
- All of the covers on this page are U.S.-made.

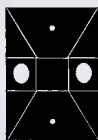
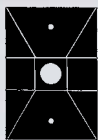


Catalog No.	Outlets	Color	Carton Quantity	Weight per 100 units
<b>30367</b>	One ½" tapped hole	Gray	25	36 lbs.
<b>30367B</b>	One ½" tapped hole	Black	25	36 lbs.
<b>30367W</b>	One ½" tapped hole	White	25	36 lbs.
<b>30367Z</b>	One ½" tapped hole	Bronze	25	36 lbs.
<b>30372</b>	Two ½" tapped holes	Gray	25	32 lbs.
<b>30372B</b>	Two ½" tapped holes	Black	25	32 lbs.
<b>30372W</b>	Two ½" tapped holes	White	25	32 lbs.
<b>30372Z</b>	Two ½" tapped holes	Bronze	25	32 lbs.
<b>30377</b>	Three ½" tapped holes	Gray	25	36 lbs.
<b>30377B</b>	Three ½" tapped holes	Black	25	36 lbs.
<b>30377W</b>	Three ½" tapped holes	White	25	36 lbs.
<b>30377Z</b>	Three ½" tapped holes	Bronze	25	36 lbs.
<b>30381</b>	Blank cover	Natural Aluminum	100	17 lbs.
<b>30381W</b>	Blank cover	White	100	17 lbs.
<b>30381Z</b>	Blank cover	Bronze	100	17 lbs.

# Rectangular Covers

Suitable for wet locations

- Made from rugged die-cast zinc.
- Superior powder coat paint finish provides maximum weatherability.
- Choice of either gray, black, white or bronze finish in 1, 2 or 3 hole configurations.
- Rectangular covers come with a gasket and stainless steel mounting screws.
- 3-hole covers include 1 close-up plug.
- All of the covers on this page are U.S.-made.



Catalog No.	Outlets	Color	Carton Quantity	Weight per 100 units
<b>30351</b>	One ½" tapped hole	Gray	25	28 lbs.
<b>30351B</b>	One ½" tapped hole	Black	25	28 lbs.
<b>30351W</b>	One ½" tapped hole	White	25	28 lbs.
<b>30351Z</b>	One ½" tapped hole	Bronze	25	28 lbs.
<b>30356</b>	Two ½" tapped holes	Gray	25	32 lbs.
<b>30356B</b>	Two ½" tapped holes	Black	25	32 lbs.
<b>30356W</b>	Two ½" tapped holes	White	25	32 lbs.
<b>30356Z</b>	Two ½" tapped holes	Bronze	25	32 lbs.
<b>30361</b>	Three ½" tapped holes	Gray	25	32 lbs.
<b>30361B</b>	Three ½" tapped holes	Black	25	32 lbs.
<b>30361W</b>	Three ½" tapped holes	White	25	32 lbs.
<b>30361Z</b>	Three ½" tapped holes	Bronze	25	32 lbs.

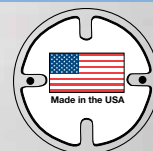
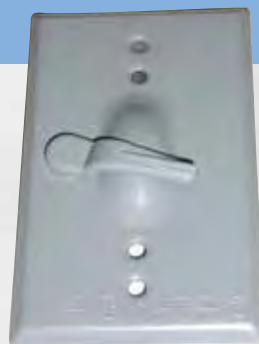




# Toggle Switch Covers

*Suitable for wet locations*

- Solid aluminum base plate, .040" thick, with rugged die-cast switch handles.
- Comes with stainless steel mounting screws and a heavy-duty universal gasket.
- Superior powder coat finish assures maximum weatherability.
- UL Listed and CSA Certified for use in the United States and Canada.
- Covers with single-pole and double-pole switches are embossed with 'ON/OFF'.
- Covers without switches or those with 3-way toggle switches are blank.
- Custom covers from 6- to 10-gang are available; consult factory.
- All toggle switch covers are made and assembled in the U.S.A. (Toggle switches, however, are made offshore).
- For replacement switches, please see Page B30.

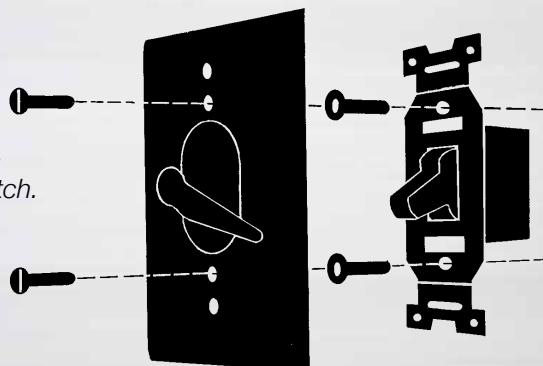
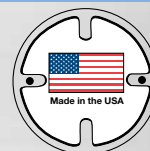


## TOGGLE SWITCH COVERS

Catalog No.	No. of Gangs	Description	Color	Mounting	Carton Quantity	Weight per 100 units
<b>30480</b>	1	Toggle switch cover with standard single-pole toggle switch (15A-125V)	Gray	Standard	25	40 lbs.
<b>30480W</b>	1	Toggle switch cover with standard single-pole toggle switch (15A-125V)	White	Standard	25	40 lbs.
<b>30480Z</b>	1	Toggle switch cover with standard single-pole toggle switch (15A-125V)	Bronze	Standard	25	40 lbs.
<b>30488</b>	1	Toggle switch cover only	Gray	Standard	25	18 lbs.
<b>30488W</b>	1	Toggle switch cover only	White	Standard	25	18 lbs.
<b>30488Z</b>	1	Toggle switch cover only	Bronze	Standard	25	18 lbs.
<b>30481</b>	1	Toggle switch cover with standard single-pole toggle switch (15A-125V)	Gray	4-screw (FS)	25	40 lbs.
<b>30489</b>	1	Toggle switch cover only	Gray	4-screw (FS)	25	18 lbs.
<b>30482</b>	1	Toggle switch cover with single-pole toggle switch (20A-120/277VAC)	Gray	Standard	25	32 lbs.
<b>30483</b>	1	Toggle switch cover with single-pole toggle switch (20A-120/277VAC)	Gray	4-screw (FS)	25	32 lbs.
<b>30490</b>	1	Toggle switch cover with double-pole toggle switch (15A-120VAC)	Gray	Standard	25	40 lbs.
<b>30494</b>	1	Toggle switch cover with double-pole toggle switch (15A-120VAC)	Gray	4-screw (FS)	25	40 lbs.
<b>30486</b>	1	Toggle switch cover with double-pole toggle switch (20A-120/277VAC)	Gray	Standard	25	32 lbs.

# Toggle Switch Covers

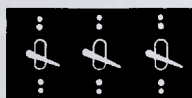
Suitable for wet locations



**These covers can be used with any toggle switch.**

All parts, including spacers, are supplied with each switch.

Strap "ears" must be cut off prior to mounting on plate.



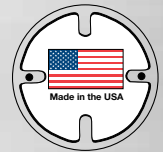
Catalog No.	No. of Gangs	Description	Color	Mounting	Carton Quantity	Weight per 100 units
30487	1	Toggle switch cover with double-pole toggle switch (20A-120/277VAC)	Gray	4-screw (FS)	25	32 lbs.
30484	1	Toggle switch cover with a three-way toggle switch (15A-125V)	Gray	Standard	25	32 lbs.
30485	1	Toggle switch cover with a three-way toggle switch (15A-125V)	Gray	4-screw (FS)	25	32 lbs.
30492	2	Toggle switch cover with 2 single-pole toggle switches (15A-125V)	Gray	Standard	10	50 lbs.
30496	2	Cover only for 2 standard toggle switches	Gray	Standard	10	40 lbs.
30493	2	Toggle switch cover with 2 three-way toggle switches (15A-125V)	Gray	Standard	10	50 lbs.
30497	3	Toggle switch cover with 3 single-pole toggle switches (15A-125V)	Gray	Standard	10	110 lbs.
30499	3	Cover only for 3 standard toggle switches	Gray	Standard	10	90 lbs.
30498	3	Toggle switch cover with 3 three-way toggle switches (15A-125V)	Gray	Standard	10	110 lbs.
30474	4	Toggle switch cover with 4 single-pole toggle switches (15A-125V)	Gray	Standard	10	150 lbs.
30478	4	Cover only for 4 standard toggle switches	Gray	Standard	10	100 lbs.
30491	5	Cover only for 5 standard toggle switches	Gray	Standard	1	100 lbs.



# Blank Covers

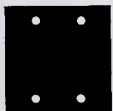
*Suitable for wet locations*

- Choice of anodized aluminum or brass - each .040 inches thick.
- Gasket and stainless steel mounting screws included.
- UL Listed and CSA Certified.
- Custom covers available from 4 to 10 gang; please consult factory.
- All covers on this page are U.S.-made.



**BLANK COVERS**

Catalog No.	Gangs	Mounting	Material	Color	Carton Quantity	Box Quantity	Weight per 100 units
<b>30278</b>	1	Standard	.040" Aluminum	Natural Aluminum	20	200	9 lbs.
<b>30278W</b>	1	Standard	.040" Aluminum	White	20	200	9 lbs.
<b>30278Z</b>	1	Standard	.040" Aluminum	Bronze	20	200	9 lbs.
<b>30279</b>	1	4-screw (FS)	.040" Aluminum	Natural Aluminum	20	200	9 lbs.
<b>30277</b>	1	Standard	.040" Brass	Gray	20	200	21 lbs.
<b>30283</b>	2	Standard	.040" Aluminum	Natural Aluminum	10	100	15 lbs.
<b>30283W</b>	2	Standard	.040" Aluminum	White	10	100	15 lbs.
<b>30283Z</b>	2	Standard	.040" Aluminum	Bronze	10	100	15 lbs.
<b>30282</b>	2	Standard	.040" Brass	Gray	10	100	33 lbs.
<b>30284</b>	3	Standard	.040" Aluminum	Natural Aluminum	5	50	25 lbs.
<b>30286</b>	3	Standard	.040" Brass	Gray	5	50	40 lbs.



# Slip Fitters

- Cast aluminum.
- Three set screws included to provide secure fit.
- Cast 2" nipple.
- Weather- and corrosion- resistant.
- UL Listed.

Catalog No.	Color	Carton Quantity	Weight per 100 units
30346	For 1½" - 2" pipe	10	40 lbs.





# Die-Cast Lampholders

*Suitable for wet locations*

- Heavy duty die-cast housing with porcelain socket and internal heat resistant gasket.
- Up to 150 watts maximum; medium base PAR 38 and R-40 lamps.
- With pre-wired high temperature lead wire; 6 inches in length.
- With 1/2 inch NPT threaded stem, locknut included.
- Adjustable swivel with positive locking screw allows lampholder to be aimed in the desired position.

Catalog No.	Color	Carton Quantity	Weight per 100 units
<b>30001</b>	Gray	36	39 lbs.
<b>30001W</b>	White	36	39 lbs.
<b>30001Z</b>	Bronze	36	39 lbs.

Exterior gasket No. 30698 can be used with this lampholder.



## Lampholder with Exterior Neoprene Gasket

Catalog No.	Color	Carton Quantity	Weight per 100 units
<b>30015</b>	Gray	36	50 lbs.
<b>30015W</b>	White	36	50 lbs.
<b>30015Z</b>	Bronze	36	50 lbs.



## Hooded Lampholder

- One-piece lampholder and hood of heavy-duty die-cast aluminum.
- Adjustable swivel with positive locking screw allows lampholder to be aimed in the desired position.
- Up to 150 watts maximum; medium base PAR 38 and R-40 lamps.
- With 1/2" NPT threaded stem, locknut included.
- 10" lead wire.
- UL Listed.

Catalog No.	Color	Carton Quantity	Weight per 100 units
<b>30060</b>	Gray	6	105 lbs.
<b>30060W</b>	White	6	105 lbs.
<b>30060Z</b>	Bronze	6	105 lbs.



# Floodlighting Kits

*Suitable for wet locations*

30141: one 30001 lampholder and one round 30367 cover with one hole.

30142: two 30001 lampholders and one round 30377 cover with three holes.

- Made from heavy-duty die-cast zinc; .094 inches thick.
- Durable powder coat paint finish.
- High temperature lead wire; 6 inches in length.
- Adjustable swivel allows lampholder(s) to be aimed in the desired position.
- Gasket and mounting hardware included.
- Assembled in the U.S.A.

Catalog No.	Color	Carton Quantity	Weight per 100 units
<b>30141</b>	Gray	10	80 lbs.
<b>30141W</b>	White	10	80 lbs.
<b>30141Z</b>	Bronze	10	80 lbs.
<b>30142</b>	Gray	10	120 lbs.
<b>30142W</b>	White	10	120 lbs.
<b>30142Z</b>	Bronze	10	120 lbs.

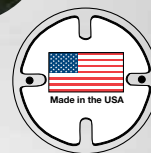
For replacement parts, please see page B31.



## Garden Lights

Attractive weatherproof garden lights provide low-level lighting for pathways, terraces, stairways, low plantings, and gardens. They enhance landscaping, as well as provide safety and security. Their high-quality components, die-cast construction, and UV-resistant powder finish assure years of trouble-free service.

- UL Listed for wet locations.
- Fully assembled, wired and ready to install.
- ½" NPT hub for ½" conduit mount.
- 3-wire 12" leads.
- Plastic socket.
- Heavy duty die-cast housing.
- Gasketed, vapor-tight, heat-resistant clear glass globe.
- UV-resistant baked powder polyester textured finish.
- Made in the U.S.A.



Catalog No.	No. of Tiers	Color	Dimensions	Maximum Wattage	Carton Quantity	Weight per 100 units
<b>30113</b>	3	Green	7" H, 6" diam.	75	6	300 lbs.
<b>30113B</b>	3	Black	7" H, 6" diam.	75	6	300 lbs.
<b>30113Z</b>	3	Bronze	7" H, 6" diam.	75	6	300 lbs.
<b>30114</b>	4	Green	9" H, 6" diam.	100	6	375 lbs.
<b>30114B</b>	4	Black	9" H, 6" diam.	100	6	375 lbs.
<b>30114Z</b>	4	Bronze	9" H, 6" diam.	100	6	375 lbs.



# Direct Wire-in Photo Controls With Fixed or Swivel Mounting

*Suitable for wet locations*

- High impact polycarbonate housing.
- Turn on between 1 and 5 foot candles.
- Turn on / turn off ratio: 1:5.
- Single-pole, single-throw switching.
- Minimum time delay: 15 seconds.
- Contact position at night normally closed.
- External slide clip allows light level adjustment.
- With ½" -14 threaded stem. Fits ½" knockout.
- With 6" color-coded lead wire.
- Temperature range: -40°F (-40°C) to 149°F (65°C).



## Durable Construction

Durable polycarbonate housing with ½" threaded stem easily mounts to a standard weatherproof box with a ½" outlet. Ideal for wall packs and other types of security and area lighting. All controls come with locknut, rubber gasket and easy-to-read instructions.

## Positive Snap Action Switch

A dependable bi-metal switch provides positive on/off switching. Built-in time delay prevents accidental turn off that may result from stray automobile headlights, lightning flashes or any momentary brightness. Switch contacts are normally closed and, should they fail, remain in an ON position.

Catalog No.	Base	Voltage	Tungsten (watts)	Ballast (volt amps)	Carton Quantity	Weight per 100 units
<b>30825</b>	Fixed	120	2000	1900	10	30 lbs.
<b>30830</b>	Fixed	208-277	2000	1900	10	30 lbs.
<b>30832*</b>	Fixed	480	2000	1900	10	30 lbs.
<b>30847*</b>	Fixed	120	3000	2900	10	40 lbs.
<b>30826</b>	Swivel	120	2000	1900	10	30 lbs.

\*All of the above items are both UL Listed and CSA Approved, except Catalog Nos. 30847 and 30832.

**NOTE:** See Basic Wiring Diagram on the following page.

# Direct Wire-in Photo Controls - "Button" Type

Suitable for wet locations

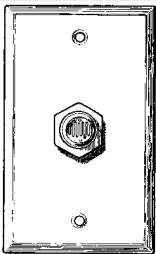
- Threaded stem, 3/4" in length, with a 3/8"-18 thread.
- Turn on between 1 and 5 foot candles.
- Turn on / turn off ratio: 1:5.
- Single-pole, single-throw switching.
- Built-in time delay prevents any false switching at night due to any momentary flashes of light.
- Contact position at night normally closed.
- With 6" color-coded lead wire.
- Temperature range: -40°F (-40°C) to 149°F (65°C).



## Durable, Weatherproof Construction

Durable polycarbonate housing is weatherproof and corrosion resistant. The polycarbonate case and lens are sonically welded in place to seal out moisture.

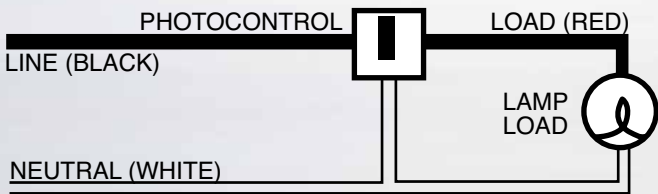
Ideal for wall packs and post lamps. All units come with locknut, rubber gasket and easy-to-read instructions.



With Anodized Aluminum Wall Plate & Gasket  
No. 30855

Catalog No.	Voltage	Tungsten (watts)	Ballast (volt amps)	Carton Quantity	Weight per 100 units
30850	120	1800	1100	10	16 lbs.
30853	208-277	1200	1100	10	20 lbs.
30855	120	1800	1100	10	30 lbs.

## Basic Wiring Diagram





# Locking-Type Photo Controls

*Suitable for wet locations*

- UV-stabilized polycarbonate housing color-coded for voltage identification.
- Meet NEMA standards for locking-type devices.
- With solid brass plug blades to provide greater electrical dependability and maximum resistance to corrosion.
- Minimum turn on: 5 foot candles; maximum turn off: 15 foot candles.
- With ½" cadmium sulfide cell.
- Built-in time delay prevents any false switching at night due to light from vehicles, lightning, etc.
- Normally closed contact position at night.
- Temperature range: -40°F (-40°C) to 149°F (65°C).
- Dimensions: 2¾" high, 3" in diameter.
- UL Listed for use in the United States and Canada.



Catalog No.	Voltage	Tungsten (watts)	Ballast (volt amps)	Carton Quantity	Weight per 100 units
<b>30834</b>	120	1000	1800	10	30 lbs.
<b>30837</b>	208-277	1000	1800	10	30 lbs.
<b>30842</b>	480	1000	1800	10	30 lbs.
<b>30844</b>	120-277	1000	1800	10	30 lbs.

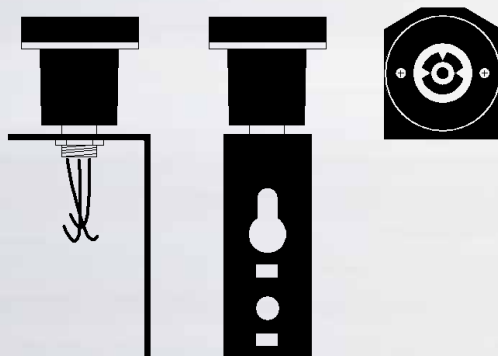


## Mounting Bracket

Catalog No.	Voltage	Tungsten (watts)	Ballast (volt amps)	Carton Quantity	Weight per 100 units
<b>30862*</b>	<i>(locking-type receptacle with L-shaped mounting bracket)</i>			12	67 lbs.
<b>30846**</b>	<i>(shorting cap)</i>			10	20 lbs.

\*UL Recognized Component.

\*\* Shorting cap keeps lights on at all times unless turned off from a remote location.



**Shorting Cap**

# Direct Wire-in Photo Controls Pencil Type -- Swivel Mount

*Suitable for wet locations*

- High impact polycarbonate enclosure.
- Swivel adjustable 180°.
- Single-pole single-throw switching.
- Standard turn on at 1.5 foot candle.



## Durable Polycarbonate Construction

*Suitable For Wet Locations*

Polycarbonate housing is weatherproof and corrosion resistant. 180 degree swivel with end light sensing allows almost any outdoor installation.

## Photocell

½" cadmium sulfide cell is calibrated to turn outdoor lighting on at 1.5 foot candle (dusk). The off/on ratio is 5:1. Both cell and protective window are UV-stabilized to assure greater cell life.

## Positive Snap Action Switch

A dependable bi-metal switch provides positive on/off switching. Built-in time delay prevents accidental turn off that may result from stray automobile headlights, lightning flashes or any momentary brightness. Switch contacts are normally closed and, should they fail, remain in an ON position.

## Temperature Range

Operating ambient temperature range between -40°F (-40°C) and 149°F (65°C).

Catalog No.	Voltage	Tungsten (watts)	Ballast (volt amps)	Carton Quantity	Weight per 100 units
30820	120	1800	1100	10	20 lbs.
30821*	208-277	1200	1100	10	20 lbs.

\*Not certified. Note: CSA International (cCSAus) tests to applicable U.S. and Canadian standards including ANSI, UL and CSA.

## Guarantee--All Photo Controls

All photo controls sold by Mulberry, except our locking-type models, are guaranteed against defects in parts or manufacture for five (5) years from the date of shipment. Locking-type controls (30834, 30837, 30842 and 30844) are guaranteed for three (3) years. It is understood that the voltage and/or wattage rating of the unit have not been exceeded, and that the unit has undergone no physical abuse.

Mulberry cannot assume responsibility for units damaged by voltage surges or lightning. Defective units will be

credited or replaced under the Guarantee if returned to factory with shipping charges both ways paid by customer.

All Direct Wire-in Photo Controls that are returned must have a minimum of 6" leads for testing.

The foregoing defines Mulberry's sole liability, and in no event shall Mulberry be responsible for labor charges arising from the changing of defective photo controls or parts or, except as herein provided, for any damage, consequential or otherwise, of any nature whatsoever.



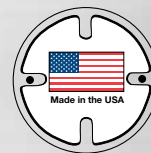
# Accessories and Replacement Parts

*Suitable for wet locations*

## Closure Plugs

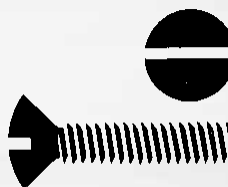
Catalog No.	Description	Color	Material
30290	1/2" closure plug	Gray	Zinc
30290W	1/2" closure plug	White	Polycarbonate
30290Z	1/2" closure plug	Bronze	Polycarbonate
30291	1/2" closure plug	Gray	Polycarbonate
30292	3/4" closure plug	Gray	Zinc
30292W	3/4" closure plug	White	Polycarbonate
30292Z	3/4" closure plug	Bronze	Polycarbonate
30293	3/4" closure plug	Gray	Polycarbonate
30294	1" closure plug	Gray	Zinc
30294W	1" closure plug	White	Zinc
30294Z	1" closure plug	Bronze	Zinc

*All plugs made in the U.S.A.*



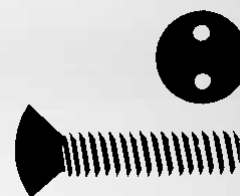
## Stainless Steel Screws

Catalog No.	Description	Length
40225	Oval head, slotted 6 x 32 thread	1/2"
40235	Oval head, slotted 6 x 32 thread	1"
40245	Oval head, slotted 6 x 32 thread	1 1/2"
40255	Oval head, slotted 6 x 32 thread	2"



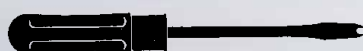
## Tamper Proof Screws

Catalog No.	Description	Length
40261	Chrome plated brass, spanner oval head, 6 x 32 thread	1/2"
40304	Chrome plated brass, spanner oval head, 6 x 32 thread	1"
40271	Chrome plated brass, spanner oval head, 6 x 32 thread	1 1/2"
40276	Chrome plated brass, spanner oval head, 6 x 32 thread	2"



## Special Screwdriver

Catalog No.	Description
40299	For spanner head tamperproof screws.



## Ground Screws

Catalog No.	Description	Length
40319	Green plated 10-32 self tapping	3/4"
40320	Green plated 10-32 regular	3/4"



# Accessories and Replacement Parts

*Suitable for wet locations*

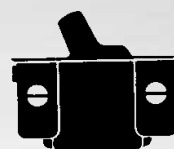
## Spacers (Ferrules)

Catalog No.	Description
<b>40495</b>	For spacing standard switches when used with weatherproof switch covers.



## Switches / Toggle

Catalog No.	Description
<b>40501</b>	Single pole 15A/120 volt switch
<b>40502</b>	Single pole 20A/120/277 volt switch
<b>40503</b>	3-way 15A/120 volt switch
<b>40504</b>	Two pole 20A-120/277 volt switch



## Motor Base Receptacle

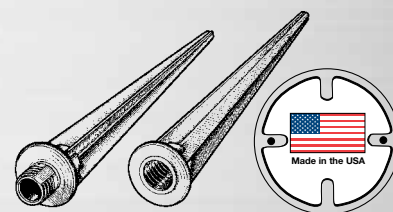
Catalog No.	Description
<b>40507</b>	Single Motor Base receptacle for mobile homes. With male device 3-wire U ground parallel blades. Rated at 15A-125V. 10A/125 volt switch



## Spikes

- Die-cast zinc.
- 1/2" male/female thread.
- Made in the U.S.A.

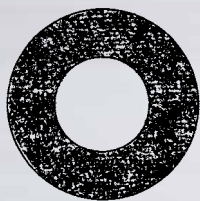
Catalog No.	Description	Carton Quantity	Weight per 100 units
<b>30297</b>	Male spike 7" long; screws into any 1/2" tapped hole	25	8 lbs.
<b>30298</b>	Female spike	25	12 lbs.



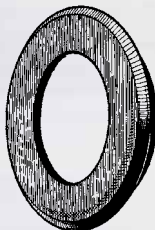
# Accessories and Replacement Parts

Suitable for wet locations

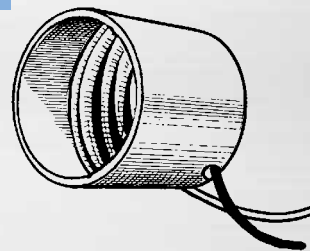
## Lampholder Replacement Parts



Inside Gasket **No. 30697**



Outside Gasket **No. 30698**



Porcelain Socket **No. 40505**

## Gaskets

- 1 Gang switch
- 1 Gang blank
- 1 Gang single receptacle
- 1 Gang telephone

USE

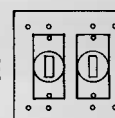


**30671**

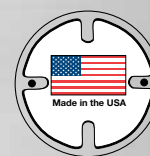


- 2 Gang blank
- 2 Gang switch
- 2 Gang duplex receptacle
- 2 Gang single receptacle
- 2 Gang, 1 switch & 1 duplex receptacle
- 2 Gang, 1 single & 1 duplex receptacle

USE

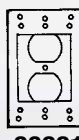


**30672**



- 1 Gang duplex receptacle
- 1 Gang skeleton (For GFI receptacles)
- 1 Gang louver

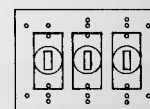
USE



**30661**

- 3 Gang switch
- 3 Gang blank

USE



**30673**

- 4" Round Catalog No. **30690**  
(2½" inner diameter)

## Replacement Parts for Garden Lights



3 Tier Glass  
**No. 40513**

• Made in the U.S.A.



4 Tier Glass  
**No. 40514**

• Made in the U.S.A.

Plastic Receptacle for Garden  
Light **No. 40509**



# Mulberry Steel Box Covers & Conduit Bodies

**When U.S.-made steel box covers are specified for a job or needed to meet an ARRA requirement, make Mulberry your first choice!**

**With the exception of our knock-out seals and our conduit bodies, every steel item in this section is manufactured right here in the USA!**

In addition, we offer:

- Superior stamping, tapping and finishing
- Smooth powder paint finish on 4 inch raised covers
- Special openings and combinations available for most covers
- Excellent service — local stock, fast turnaround, and quick delivery from our factory and regional warehouses



**Round & Square Flat Covers**

**Device Covers**

**Square Raised Covers**

**FS Covers**

**Gang Box Covers**

**Die-Cast & Malleable Iron Conduit Bodies**

**Knockout Seals**

**Reducing Washers**

**Nail Plates**



# Mulberry 4 Inch Square Raised Covers

STEEL BOX COVERS

**Superior Quality • U.S. Made**

**11401**



**11410**



**11402**



- Over 20 different openings and configurations available
- Depressed corners for easier mounting
- Gray powder coat finish helps prevent oxidation and possible rust
- Covers with duplex openings come with additional screw holes and mounting hardware to meet the latest NEC requirements
- Made in the USA



# Round and Octagon Box Covers

3-1/2" and 4"



No. 11001



No. 11003



No. 11101



No. 11103



No. 11108



No. 11124



Catalog No.	Description	Carton Quantity	Weight Per 100 Units
<b>3 1/2" ROUND FLAT</b>			
11001	Blank	100	17 lbs.
11002†	Bushed Hole (.4375" dia.)	100	17 lbs.
11003	1/2" Knockout	100	17 lbs.
11006	Single Receptacle	100	14 lbs.
11008	Toggle	100	16 lbs.

<b>4" ROUND FLAT/OCTAGON</b>			
11101	Blank**	100	21 lbs.
11102†	Bushed Hole (.4375" dia.)**	100	21 lbs.
11103	1/2" Knockout**	100	21 lbs.
11104†	Spider**	100	18 lbs.
11105*	Duplex Receptacle	100	19 lbs.
11106	Single Receptacle	100	20 lbs.
11108	Toggle	100	23 lbs.
11109	TL Receptacle (1.5937" dia.)	100	20 lbs.

\*\* Octagon.

<b>4" ROUND RAISED</b>			
11121	Blank	100	29 lbs.
11122†	Bushed Hole (.4375" dia.)	100	29 lbs.
11123†	1/2" Knockout	100	29 lbs.
11124	Opening (ears tapped, 2-3/4" between device centers, raised 5/8")	100	19 lbs.
11125	Opening (ears tapped, 2-3/4" between device centers, raised 1/2")	100	18 lbs.

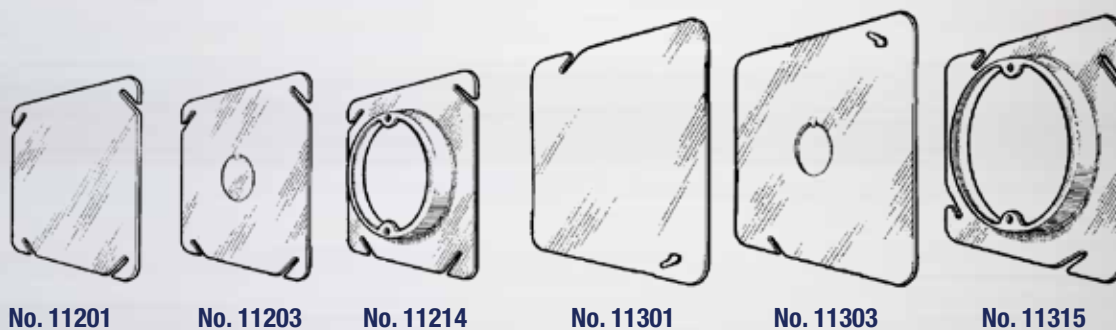
\*Not C-UL-US Listed.

†To be discontinued when stock exhausted.



# Square Covers

4" and 4-11/16"



SQUARE FLAT COVERS

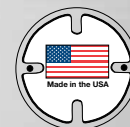
Catalog No.	Description	Carton Quantity	Weight Per 100 Units
<b>4" SQUARE FLAT</b>			
11201	Blank	50	29 lbs.
11202†	Bushed Hole (.4375" dia.)	100	29 lbs.
11203	1/2" Knockout	100	28 lbs.

<b>4" SQUARE RAISED</b>			
11211	Blank, Raised 5/8"	100	36 lbs.
11212	Bushed Hole (.4375" dia., raised 5/8")	100	38 lbs.
11214	3" Opening (ears tapped, 2-3/4" between device centers, raised 5/8")	100	26 lbs.
11215	3" Opening (ears tapped, 2-3/4" between device centers, raised 1/2")	100	22 lbs.
11216	3" Opening (ears tapped, 2-3/4" between device centers, raised 3/4")	50	30 lbs.

<b>4-11/16" SQUARE FLAT</b>			
11301	Blank	50	40 lbs.
11303	1/2" Knockout	50	39 lbs.

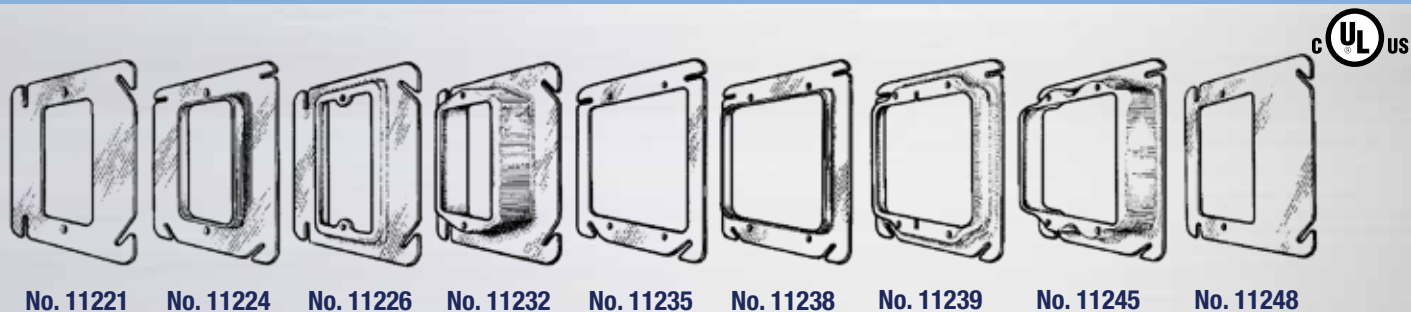
<b>4-11/16" SQUARE FLAT</b>			
11311	Blank, Raised 5/8"	25	50 lbs.
11314	3" Opening (ears tapped, 2-3/4" between device centers, raised 5/8")	25	38 lbs.
11315	4" Opening (ears tapped, 3-1/2" between device centers, raised 5/8")	25	30 lbs.

†To be discontinued when stock exhausted.



# Square Device and Offset Covers

4"



Catalog No.	Description	Carton Quantity	Weight Per 100 Units
<b>1 DEVICE — 4" SQUARE (SQUARE DRAWN)</b>			
11221	Flat	100	17 lbs.
11222	Raised 1/8"	100	17 lbs.
11223	Raised 1/4"	100	18 lbs.
11224	Drywall 1/4"	100	25 lbs.
11225	Raised 3/8"	100	19 lbs.
11226	Raised 1/2"	100	22 lbs.
11227	Raised 5/8"	50	25 lbs.
11228	Raised 3/4"	50	28 lbs.
11230	Raised 1"	25	33 lbs.
11231	Raised 1-1/4"	25	38 lbs.
11232*	Raised 1-1/2 "	25	41 lbs.

<b>2 DEVICES — 4" SQUARE</b>			
11235	Flat	100	12 lbs.
11236	Raised 1/8"	50	13 lbs.
11237	Raised 1/4"	50	13 lbs.
11238	Drywall 1/4"	50	18 lbs.
11239	Raised 3/8"	50	16 lbs.
11240	Raised 1/2"	50	18 lbs.
11241	Raised 5/8"	50	21 lbs.
11242	Raised 3/4"	50	24 lbs.
11244	Raised 1"	25	30 lbs.
11245	Raised 1-1/4"	25	35 lbs.

<b>OFFSET COVERS — 4" SQUARE</b>			
11248*	Flat	100	22 lbs.
11249*	Raised 1/8"	100	21 lbs.
11250*	Raised 1/4"	100	22 lbs.
11251*	Raised 1/2"	100	25 lbs.
11252*	Raised 3/4"	25	30 lbs.
11253*	Raised 1"	25	33 lbs.

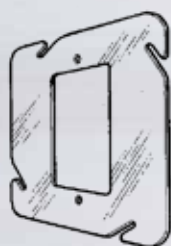
*\*Not square drawn.*



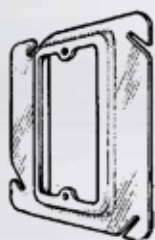


# Square Device Covers

4-11/16"



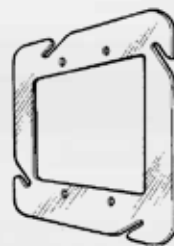
No. 11321



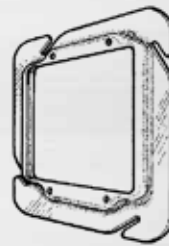
No. 11326



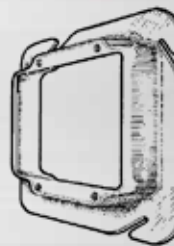
No. 11331



No. 11335



No. 11340



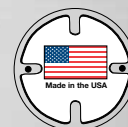
No. 11345



Catalog No.	Description	Carton Quantity	Weight Per 100 Units
<b>1 DEVICE — 4-11/16" SQUARE (SQUARE DRAWN)</b>			
11321	Flat	50	31 lbs.
11323	Raised 1/4"	50	31 lbs.
11326	Raised 1/2"	50	34 lbs.
11327	Raised 5/8"	50	36 lbs.
11328	Raised 3/4"	50	38 lbs.
11330	Raised 1"	25	44 lbs.
11331*	Raised 1-1/4"	25	48 lbs.

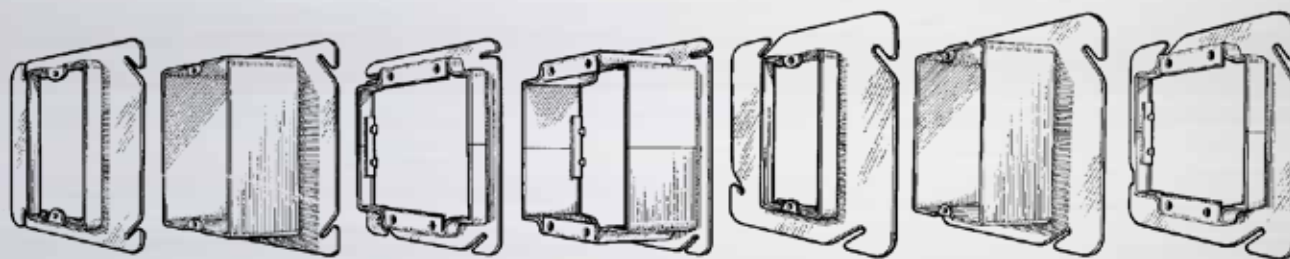
<b>2 DEVICES — 4-11/16" SQUARE</b>			
11335	Flat	50	23 lbs.
11337	Raised 1/4"	50	24 lbs.
11340	Raised 1/2"	50	29 lbs.
11341	Raised 5/8"	25	32 lbs.
11342	Raised 3/4"	25	35 lbs.
11344	Raised 1"	25	46 lbs.
11345	Raised 1-1/4"	25	43 lbs.

*\*Not square drawn.*



# Tile Type Device Covers

4" and 4-11/16"



No. 11261

No. 11266

No. 11271

No. 11276

No. 11361

No. 11366

No. 11371

Catalog No.	Description	Carton Quantity	Weight Per 100 Units
<b>1 DEVICE — 4" SQUARE</b>			
11261	Raised 1/2"	25	31 lbs.
11262	Raised 3/4"	25	36 lbs.
11263	Raised 1"	25	41 lbs.
11264	Raised 1-1/4"	25	45 lbs.
11265	Raised 1-1/2"	25	51 lbs.
11266	Raised 2"	25	60 lbs.

<b>2 DEVICES — 4" SQUARE</b>			
11271	Raised 1/2"	25	27 lbs.
11272	Raised 3/4"	25	33 lbs.
11273	Raised 1"	25	40 lbs.
11274	Raised 1-1/4"	25	45 lbs.
11275	Raised 1-1/2"	25	51 lbs.
11276	Raised 2"	20	63 lbs.

<b>1 DEVICE — 4-11/16" SQUARE</b>			
11361	Raised 1/2"	25	40 lbs.
11362	Raised 3/4"	25	45 lbs.
11363	Raised 1"	25	51 lbs.
11364	Raised 1-1/4"	25	55 lbs.
11365	Raised 1-1/2"	25	45 lbs.
11366	Raised 2"	25	70 lbs.

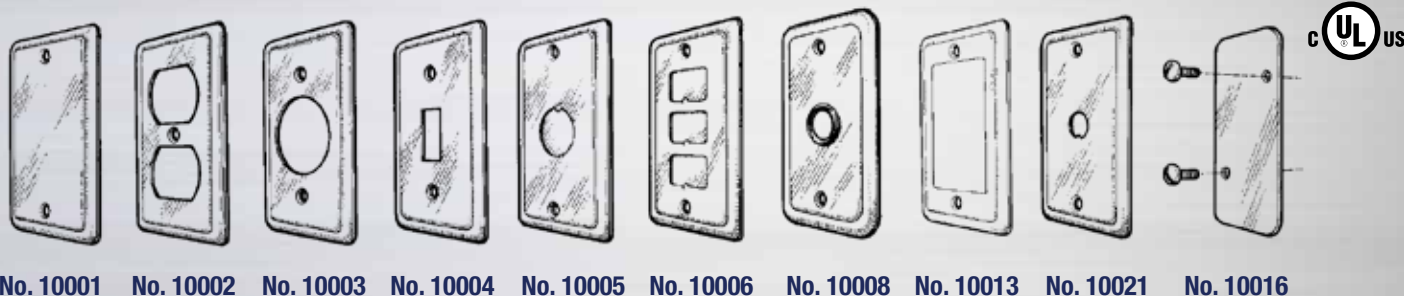
<b>2 DEVICES — 4-11/16" SQUARE</b>			
11371	Raised 1/2"	25	36 lbs.
11372	Raised 3/4"	25	43 lbs.
11373	Raised 1"	25	49 lbs.
11374	Raised 1-1/4"	25	55 lbs.
11375	Raised 1-1/2"	25	62 lbs.
11376	Raised 2"	20	76 lbs.



# Utility Covers

4-3/32" x 2-7/32"

- Galvanized steel, smooth finish.
- Special utility covers available in stainless steel and painted metal (please use item no. 10011).



Catalog No.	Description	Box Quantity	Carton Quantity	Weight Per 100 Units
10001	Blank	25	250	10 lbs.
10002	Duplex	25	250	7 lbs.
10003	Single Receptacle	25	250	8 lbs.
10004	Toggle	25	250	9 lbs.
10005	1/2" Knockout	25	250	9 lbs.
10006*†	3 Device Interchangeable with strap	20	200	16 lbs.
10008*	Bushed Telephone 5/8" ID	20	200	11 lbs.
10009	1.620" dia. 20A TL Receptacle	25	250	8 lbs.
10010	1.730" dia. 30A TL Receptacle	25	250	8 lbs.
10013	GFCI Receptacle (Box mounting 3.281")	25	250	7 lbs.
10021*	Appliance Switch (.4687" dia.)	25	250	9 lbs.
10016	Rectangular cover for small handy box (3.7813 x 1.5938", fits Appleton 4SS, Raco 640)	25	250	12 lbs.

*\*Painted with a baked cadilite finish.*

*†To be discontinued when stock exhausted.*



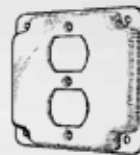
# Finished Covers

4"

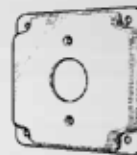
- Fully depressed corners for easier, faster mounting.
- Additional screwholes on duplex receptacles to meet NEC requirement.
- Also available unfinished in galvanized steel. Add suffix "U".
- Special 4" raised covers available (please use item no. 11441).



No. 11401



No. 11402



No. 11403



No. 11410



No. 11411



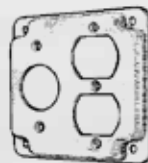
No. 11412



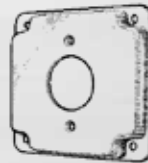
No. 11413



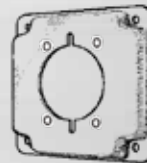
No. 11414



No. 11415



No. 11421



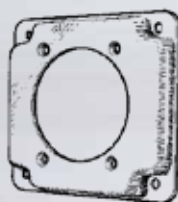
No. 11422

Catalog No.	Description	Carton Quantity	Weight Per 100 Units
11400	Blank	50	38 lbs.
11401	1 Toggle	50	39 lbs.
11402	1 Duplex	50	35 lbs.
11403	1 Single Receptacle	50	36 lbs.
11410	2 Toggle Switches	50	38 lbs.
11411	2 Duplex Receptacles	50	31 lbs.
11412	2 Single Receptacles	50	34 lbs.
11413	Toggle / Duplex	50	35 lbs.
11414	Toggle / Single Receptacle	50	36 lbs.
11415	Duplex / Single Receptacle	50	32 lbs.
11421	1.620" dia. 20A TL Receptacle	50	35 lbs.
11422	2.125" dia. Range/Dryer Receptacle For Leviton nos. 278 and 279	50	33 lbs.

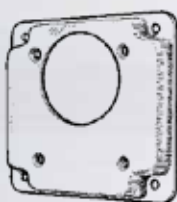


# Finished Covers

4"



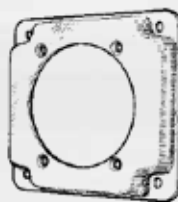
No. 11423



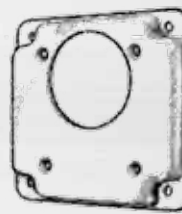
No. 11424



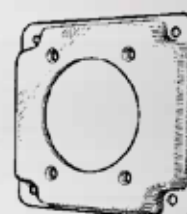
No. 11425



No. 11426



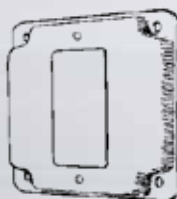
No. 11427



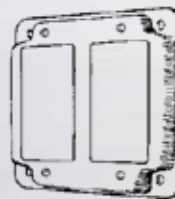
No. 11428



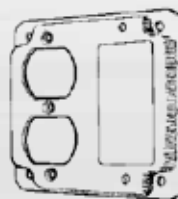
No. 11429



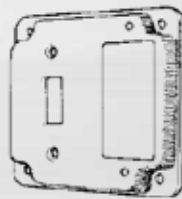
No. 11432



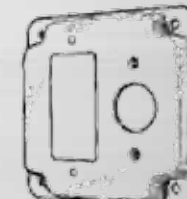
No. 11433



No. 11435



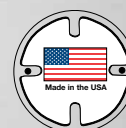
No. 11436



No. 11442

Catalog No.	Description	Carton Quantity	Weight Per 100 Units
11423	2.480" dia. Power Outlet	50	30 lbs.
11424	2.165" dia. Power Outlet	50	33 lbs.
11425	1.730" dia. TL Receptacle	50	35 lbs.
11426	2.625" dia. Power Outlet	50	29 lbs.
11427	2.275" dia. Power Outlet	50	32 lbs.
11428	2.255" dia. Power Outlet for P&S Nos. 5740, 5744, 5750, 5754, etc.	50	33 lbs.
11429	1 Duplex / 1 20A TL Receptacle	50	32 lbs.
11432	1 GFCI Receptacle*	50	33 lbs.
11433	2 GFCI Receptacles*	50	27 lbs.
11435	1 Duplex / 1 GFCI Receptacle*	50	27 lbs.
11436	1 Toggle Switch / 1 GFCI Receptacle*	50	35 lbs.
11442	1 GFCI Receptacle* / 1 Single Receptacle	50	35 lbs.

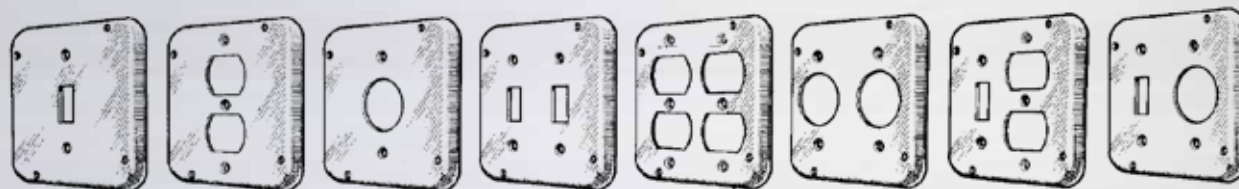
\*Strap "ears" must be cut off prior to mounting on plate. GFCIs are box mounting, 3.281".



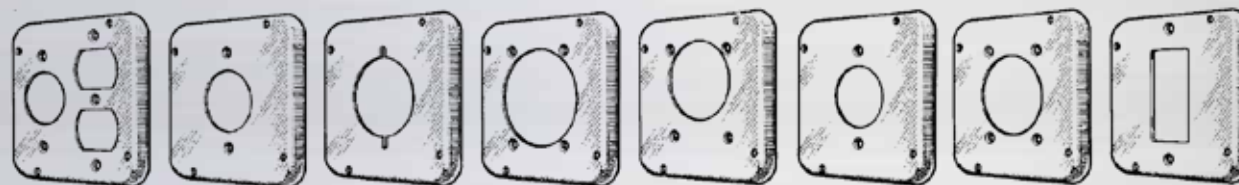


# Finished Covers

4-11/16"



No. 11501    No. 11502    No. 11503    No. 11510    No. 11511    No. 11512    No. 11513    No. 11514

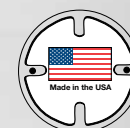


No. 11515    No. 11521    No. 11522    No. 11523    No. 11524    No. 11525    No. 11526    No. 11532



Catalog No.	Description	Carton Quantity	Weight Per 100 Units
11500	Blank	25	53 lbs.
11501	Toggle	25	51 lbs.
11502	Duplex	25	48 lbs.
11503	1 Single Receptacle	25	50 lbs.
11510	2 Toggle Switches	25	52 lbs.
11511	2 Duplex Receptacles	25	45 lbs.
11512	2 Single Receptacles	25	49 lbs.
11513	Toggle / Duplex	25	47 lbs.
11514	Toggle / Single Receptacle	25	52 lbs.
11515	Duplex / Single Receptacle	25	46 lbs.
11521	1.620" dia. 20A TL Receptacle	25	49 lbs.
11522	2.125" dia. Range/ Dryer Receptacle	25	47 lbs.
11523	2.480" dia. Power Outlet	25	45 lbs.
11524	2.165" dia. Power Outlet	25	46 lbs.
11525	1.730" dia. Power Outlet	25	48 lbs.
11526	2.625" dia. Power Outlet	25	43 lbs.
11527	2.275" dia. Power Outlet	25	46 lbs.
11528	2.255" dia. Power Outlet	25	48 lbs.
11529	2 1.620" dia. 20A TL Receptacles	25	46 lbs.
11532	1 GFCI Receptacle	25	47 lbs.
11533	2 GFCI Receptacles	25	40 lbs.
11535	1 Duplex / 1 GFCI Receptacle	25	45 lbs.
11536	1 Toggle Switch / 1 GFCI Receptacle	25	47 lbs.
11538	Duplex / 1.620" dia. TL Receptacle	25	46 lbs.

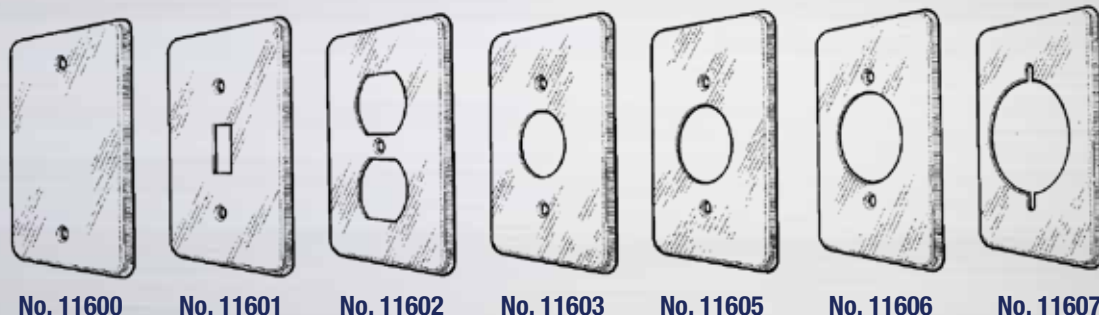
- Additional screwholes meet NEC requirement and mount to ears on any box.
- Also available unfinished in galvanized steel. Add suffix "U".
- Special 4-11/16" raised covers available (please use item no. 11541).



# FS Type Covers

1 - 3 Gangs

- Raised, rounded edge for use with FS fittings with raised lip on top, except Crouse Hinds.
- Special FS covers available in stainless steel or aluminum (please use item nos. 11641-11643 for 1-3 gangs).



Catalog No.	Description	Box Quantity	Carton Quantity	Weight Per 100 Units
<b>1 GANG</b>				
11600	Blank	20	200	14 lbs.
11601	Toggle	20	200	16 lbs.
11602	Duplex	20	200	13 lbs.
11603	Single Receptacle	20	200	13 lbs.
11605	1.620" dia. TL Receptacle	20	200	14 lbs.
11606	1.730" dia. TL Receptacle	20	200	12 lbs.
11607	2.125" dia. Range/Dryer Rcpt.	20	200	11 lbs.
11608	GFCI Receptacle (2 screw)	20	200	12 lbs.
11609	GFCI Receptacle (4 screw)	20	200	13 lbs.
<b>2 GANGS</b>				
11611	2 Blank	10	100	22 lbs.
11612	2 Toggle Switches	10	100	21 lbs.
11613	2 Duplex Receptacles	10	100	17 lbs.
11614	2 Single Receptacles	10	100	20 lbs.
11615	Toggle / Duplex	10	100	23 lbs.
11616	Toggle / Single Receptacle	10	100	21 lbs.
11618	2.125" dia. Range/Dryer Rcpt.	10	100	19 lbs.
11620	2 GFCI Receptacles	10	100	15 lbs.
11621	Switch / GFCI Receptacle	10	100	19 lbs.
<b>3 GANGS</b>				
11622	3 Blank	10	100	33 lbs.
11623	3 Toggle Switches	10	100	31 lbs.
11624	3 Duplex Receptacles	10	100	24 lbs.
11625	2 Toggle / 1 Duplex Receptacle	10	100	34 lbs.
11626	2 Toggle / 1 Single Receptacle	10	100	35 lbs.
11628	2 1.620" dia. TL Receptacles	10	100	20 lbs.
11629	2 1.730" dia. TL Receptacles	10	100	19 lbs.
11630	3 GFCI Receptacles	10	100	27 lbs.



# Flat Gang Box Covers

2 - 10 Gangs

- Devices spaced 1-13/16" between centers.
- All gang box covers 4-11/16" high.
- Individually packaged.
- Special covers available (please use item nos. 10142-10150 for 2-10 gangs).



No. 10092



No. 10103

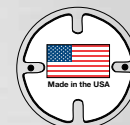


No. 10095



No. 10090

Catalog No.	Description	Width	Weight Per 100 Units
<b>BLANKS</b>			
10082	2 Gang Blank	7"	58 lbs.
10083	3 Gang Blank	8-7/8"	68 lbs.
10084	4 Gang Blank	10-5/8"	86 lbs.
10085	5 Gang Blank	12-7/16"	107 lbs.
10086	6 Gang Blank	14-1/4"	117 lbs.
10087	7 Gang Blank	16-1/16"	137 lbs.
10088	8 Gang Blank	17-15/16"	150 lbs.
10089	9 Gang Blank	19-3/4"	170 lbs.
10090	10 Gang Blank	21-9/16"	182 lbs.
<b>SWITCHES</b>			
10092	2 Gang Switch	7"	56 lbs.
10093	3 Gang Switch	8-7/8"	66 lbs.
10094	4 Gang Switch	10-5/8"	87 lbs.
10095	5 Gang Switch	12-7/16"	103 lbs.
10096	6 Gang Switch	14-1/4"	113 lbs.
10097	7 Gang Switch	16-1/16"	132 lbs.
10098	8 Gang Switch	17-15/16"	146 lbs.
10099	9 Gang Switch	19-3/4"	154 lbs.
10100	10 Gang Switch	21-9/16"	173 lbs.
<b>COMBINATIONS AND DUPLEX RECEPTACLES</b>			
10103	3 Gang: 2 Switch, 1 Duplex	8-7/8"	62 lbs.
10104	4 Gang: 3 Switch, 1 Duplex	10-5/8"	83 lbs.
10105	5 Gang: 4 Switch, 1 Duplex	12-7/16"	93 lbs.
10111	3 Gang: 1 Switch, 2 Duplex	8-7/8"	59 lbs.
10122	2 Gang Duplex Receptacle	7"	47 lbs.
10123	3 Gang Duplex Receptacle	8-7/8"	54 lbs.
10124	4 Gang Duplex Receptacle	10-5/8"	71 lbs.
10125	5 Gang Duplex Receptacle	12-7/16"	79 lbs.
10126	6 Gang Duplex Receptacle	14-1/4"	88 lbs.
10127	7 Gang Duplex Receptacle	16-1/16"	99 lbs.
10128	8 Gang Duplex Receptacle	17-15/16"	105 lbs.
10129	9 Gang Duplex Receptacle	19-3/4"	120 lbs.
10130	10 Gang Duplex Receptacle	21-9/16"	137 lbs.
<b>GFCI RECEPTACLES</b>			
10132	2 Gang GFCI	7"	47 lbs.
10133	3 Gang GFCI	8-7/8"	54 lbs.
10134	4 Gang GFCI	10-5/8"	71 lbs.



# Reducing Washers

1/2" x 1/4" — 4" x 3-1/2"



- Raised flanges to fit snugly into box knockout.
- Minimum order: box quantity.

Catalog No.	Description	Box Quantity	Carton Quantity	Weight Per 100 Units
40001	1/2" x 15/32"	250	2500	.9 lbs.
40002	1/2" x 1/4"	250	2500	.9 lbs.
40003	1/2" x 3/8"	250	2500	.9 lbs.
40005	3/4" x 1/2"	250	2500	1.6 lbs.
40006	1" x 1/2"	250	2500	1.6 lbs.
40007	1" x 3/4"	250	2500	1.4 lbs.
40008	1-1/4" x 1/2"	100	1000	3 lbs.
40009	1-1/4" x 3/4"	100	1000	3 lbs.
40010	1-1/4" x 1"	100	1000	3 lbs.
40011	1-1/2" x 1/2"	100	1000	5 lbs.
40012	1-1/2" x 3/4"	100	1000	5 lbs.
40013	1-1/2" x 1"	100	1000	4 lbs.
40014	1-1/2" x 1-1/4"	100	1000	3 lbs.
40015	2" x 1/2"	50	500	10 lbs.
40016	2" x 3/4"	50	500	9 lbs.
40017	2" x 1"	50	500	8 lbs.
40018	2" x 1-1/4"	50	500	7 lbs.
40019	2" x 1-1/2"	50	500	6 lbs.
40020	2-1/2" x 1/2"	25	250	10 lbs.
40021	2-1/2" x 3/4"	25	250	8 lbs.
40022	2-1/2" x 1"	25	250	9 lbs.
40023	2-1/2" x 1-1/4"	25	250	8 lbs.
40024	2-1/2" x 1-1/2"	25	250	7 lbs.
40025	2-1/2" x 2"	25	250	5 lbs.
40026	3" x 1/2"	25	250	21 lbs.
40027	3" x 3/4"	25	250	20 lbs.
40028	3" x 1"	25	250	20 lbs.
40029	3" x 1-1/4"	25	250	18 lbs.
40030	3" x 1-1/2"	25	250	19 lbs.
40031	3" x 2"	25	250	15 lbs.
40032	3" x 2-1/2"	25	250	13 lbs.
40033	3-1/2" x 1/2"	10	100	35 lbs.
40034	3-1/2" x 3/4"	10	100	35 lbs.
40035	3-1/2" x 1"	10	100	33 lbs.
40036	3-1/2" x 1-1/4"	10	100	32 lbs.
40037	3-1/2" x 1-1/2"	10	100	30 lbs.
40038	3-1/2" x 2"	10	100	28 lbs.
40039	3-1/2" x 2-1/2"	10	100	24 lbs.
40040	3-1/2" x 3"	10	100	18 lbs.
40041	4" x 1/2"	20	100	42 lbs.
40042	4" x 3/4"	20	100	42 lbs.
40043	4" x 1"	20	100	41 lbs.
40044	4" x 1-1/4"	20	100	36 lbs.
40045	4" x 1-1/2"	20	100	37 lbs.
40046	4" x 2"	20	100	34 lbs.
40047	4" x 2-1/2"	20	100	31 lbs.
40048	4" x 3"	20	100	25 lbs.
40049	4" x 3-1/2"	20	100	20 lbs.

40001 fits McGill canopy switch. 40002 fits standard canopy switch.



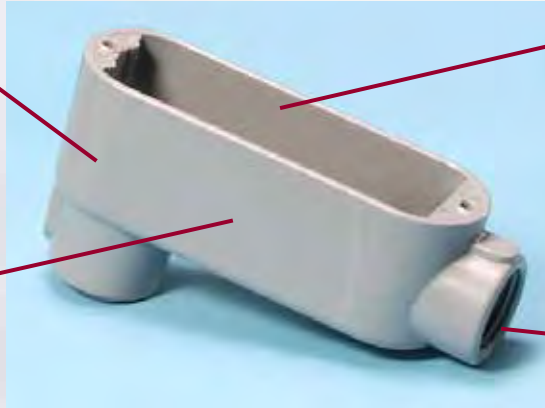
# Conduit Bodies

Unassembled • Assembled • Threaded • Set-Screw • Combination Threaded/Set-Screw



Smooth, corrosion resistant  
electrostatic  
powder coating.

Seamless die-cast  
aluminum construction.



Cubic capacity and  
UL listing clearly marked.

Smooth, uniform NPT threads  
for quick installation.

Neoprene rubber  
gasket.



Combination Phillips/slotted  
screws.

Screws and retaining  
washer already installed.

Choice of either a galvanized steel  
or aluminum cover.





# Conduit Bodies

Unassembled • Assembled • Threaded • Set-Screw • Combination Threaded/Set-Screw

## *Applications:*

- Attach to either Rigid conduit or EMT when it is necessary to correct or change the direction of conduit runs.
- Provide access to conductors when wire pulling, splicing or for maintenance.
- Make 90 degree bends in conduit runs.

## *Features:*

- Available unassembled (body only) or pre-assembled with neoprene rubber gasket and a choice of either a steel or aluminum cover.
- Choice of LB, LL, LR, C, T and TB configurations — most available from 1/2 inch to 4 inch trade sizes.
- Die-cast conduit bodies come threaded (for rigid conduit or IMC), set-screw (for EMT) or combination threaded/set-screw (for rigid, IMC or EMT) and cast from high strength, corrosion and weather resistant aluminum alloy.
- Malleable iron conduit bodies are available unassembled and made from high strength malleable iron, zinc plated.
- All conduit bodies have smooth, tapered NPT threaded hubs.
- Moguls and SLBs also available.
- UL Listed, CSA Approved.

# Conduit Bodies

Threaded, Combo and Set Screw Bodies and Kits



Hub Size	Unassembled (body only)			Assembled (with cover and gasket)			Box Quantity	Carton Quantity
	Threaded	Catalog No. Set Screw	Combination	Threaded	Catalog No. Set Screw	Combination		
LB								
1/2"	11801	11851	13801	12801	12851	14801	10	50
3/4"	11802	11852	13802	12802	12852	14802	10	50
1"	11803	11853	13803	12803	12853	14803	5	25
1-1/4"	11804	11854	13804	12804	12854	14804	—	2
1-1/2"	11805	11855	13805	12805	12855	14805	—	2
2"	11806	11856	13806	12806	12856	14806	—	1
2-1/2"				12807	12857		—	1
3"				12808	12858		—	1
3-1/2"				12809	12859		—	1
4"				12810	12860		—	1
LL								
1/2"	11811	11861	13811	12811	12861	14811	10	50
3/4"	11812	11862	13812	12812	12862	14812	10	50
1"	11813	11863	13813	12813	12863	14813	5	25
1-1/4"	11814	11864	13814	12814	12864	14814	—	2
1-1/2"	11815	11865	13815	12815	12865	14815	—	2
2"	11816	11866	13816	12816	12866	14816	—	1
2-1/2"				12817			—	1
3"				12818			—	1
3-1/2"				12819			—	1
4"				12820			—	1
LR								
1/2"	11821	11871	13821	12821	12871	14821	10	50
3/4"	11822	11872	13822	12822	12872	14822	10	50
1"	11823	11873	13823	12823	12873	14823	5	25
1-1/4"	11824	11874	13824	12824	12874	14824	—	2
1-1/2"	11825	11875	13825	12825	12875	14825	—	2
2"	11826	11876	13826	12826	12876	14826	—	1
2-1/2"				12827			—	1
3"				12828			—	1
3-1/2"				12829			—	1
4"				12830			—	1
C								
1/2"	11831	11881	13831	12831	12881	14831	10	50
3/4"	11832	11882	13832	12832	12882	14832	10	50
1"	11833	11883	13833	12833	12883	14833	5	25
1-1/4"	11834	11884	13834	12834	12884	14834	—	2
1-1/2"	11835	11885	13835	12835	12885	14835	—	2
2"	11836	11886	13836	12836	12886	14836	—	1
2-1/2"				12837			—	1
3"				12838			—	1
T								
1/2"	11841	11891	13841	12841	12891	14841	10	50
3/4"	11842	11892	13842	12842	12892	14842	10	50
1"	11843	11893	13843	12843	12893	14843	5	25
1-1/4"	11844	11894	13844	12844	12894	14844	—	2
1-1/2"	11845	11895	13845	12845	12895	14845	—	2
2"	11846	11896	13846	12846	12896	14846	—	1
2-1/2"				12847			—	1
3"				12848			—	1
TB								
1/2"	11921			12921			10	50
3/4"	11922			12922			10	50
1"	11923			12923			5	25
1-1/4"	11924			12924			—	2
1-1/2"	11925			12925			—	2
2"	11926			12926			—	1

For weights, please see price sheet or call Customer Service.



# Conduit Bodies

Malleable Iron Conduit Bodies, SLBs and Moguls

## Malleable Iron

- Threaded body for use with Rigid or IMC
- Zinc plated malleable iron
- NPT threaded hubs
- Suitable for use in concrete

Hub Size	Unassembled Threaded (body only)	Box Quantity	Carton Quantity
<b>LB</b>			
1/2"	17801	10	50
3/4"	17802	10	50
1"	17803	5	25
1-1/4"	17804	—	2
1-1/2"	17805	—	2
2"	17806	—	1
2-1/2"	17807	—	1
3"	17808	—	1
3-1/2"	17809	—	1
4"	17810	—	1

<b>LL</b>			
1/2"	17811	10	50
3/4"	17812	10	50
1"	17813	5	25
1-1/4"	17814	—	2
1-1/2"	17815	—	2
2"	17816	—	1
2-1/2"	17817	—	1
3"	17818	—	1
3-1/2"	17819	—	1
4"	17820	—	1

<b>LR</b>			
1/2"	17821	10	50
3/4"	17822	10	50
1"	17823	5	25
1-1/4"	17824	—	2
1-1/2"	17825	—	2
2"	17826	—	1
2-1/2"	17827	—	1
3"	17828	—	1
3-1/2"	17829	—	1
4"	17830	—	1

Hub Size	Unassembled Threaded (body only)	Box Quantity	Carton Quantity
<b>C</b>			
1/2"	17831	10	50
3/4"	17832	10	50
1"	17833	5	25
1-1/4"	17834	—	2
1-1/2"	17835	—	2
2"	17836	—	1
2-1/2"	17837	—	1
3"	17838	—	1
3-1/2"	17839	—	1
4"	17840	—	1

<b>T</b>			
1/2"	17841	10	50
3/4"	17842	10	50
1"	17843	5	25
1-1/4"	17844	—	2
1-1/2"	17845	—	2
2"	17846	—	1
2-1/2"	17847	—	1
3"	17848	—	1
3-1/2"	17849	—	1
4"	17850	—	1



## Aluminum SLBs and Moguls



Catalog No.	Hub Size	Box Quantity	Carton Quantity
<b>SLBs</b>			
11901	1/2"	10	50
11902	3/4"	10	50
11903	1"	5	25
11904	1-1/4"	—	1
11905	1-1/2"	—	1
11906	2"	—	1



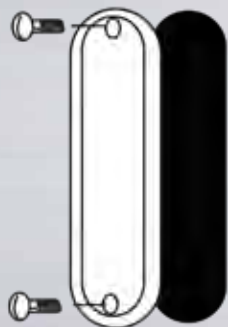
Catalog No.	Hub Size	Box Quantity	Carton Quantity
<b>MOGUL CONDUIT BODIES</b>			
11914	1-1/4"	5	
11915	1-1/2"	2	
11916	2"	2	
11917	2-1/2"	1	
11918	3"	1	
11919	3-1/2"	1	
11920	4"	1	

Complete with Cover, Gasket and Screws



# Conduit Body Covers and Gaskets

Oval-Round Form 35 Series, from 1/2" to 4" Size



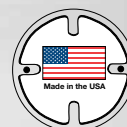
No. 11699 No. 11720

- Choice of galvanized steel, aluminum or malleable iron covers.
- Screws and washers come already mounted.
- Full size gaskets are made of neoprene rubber.
- For use with all standard conduit bodies, except Crouse-Hinds and 2-1/2 and 3 inch sizes and 3-1/2 and 4 inch size for Red Dot.
- UL Listed 2-1/2 and 3 inch sizes.

Catalog No.	Description	Box Quantity	Carton Quantity
-------------	-------------	--------------	-----------------

## GALVANIZED STEEL — 1/2" - 4"

11699	Blank, 1/2"	25	250
11700	Blank, 3/4"	25	250
11701	Blank, 1"	20	200
11702	Blank, 1-1/4" — 1-1/2"	—	25
11703	Blank, 2"	—	25
11704	Blank, 2-1/2" — 3"	—	25
11705	Blank, 3-1/2" — 4"	—	25



## ALUMINUM — 1/2" - 4"

11710	Blank, 1/2"	25	250
11711	Blank, 3/4"	25	250
11712	Blank, 1"	20	200
11713	Blank, 1-1/4" — 1-1/2"	—	25
11714	Blank, 2"	—	25
11715	Blank, 2-1/2" — 3"	—	25
11716	Blank, 3-1/2" — 4"	—	25



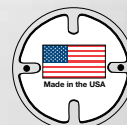
## MALLEABLE IRON — 1/2" - 4"

11730	Blank, 1/2"	25	250
11731	Blank, 3/4"	25	250
11732	Blank, 1"	20	200
11733	Blank, 1-1/4" — 1-1/2"	—	25
11734	Blank, 2"	—	25
11735	Blank, 2-1/2" — 3"	—	25
11736	Blank, 3-1/2" — 4"	—	25

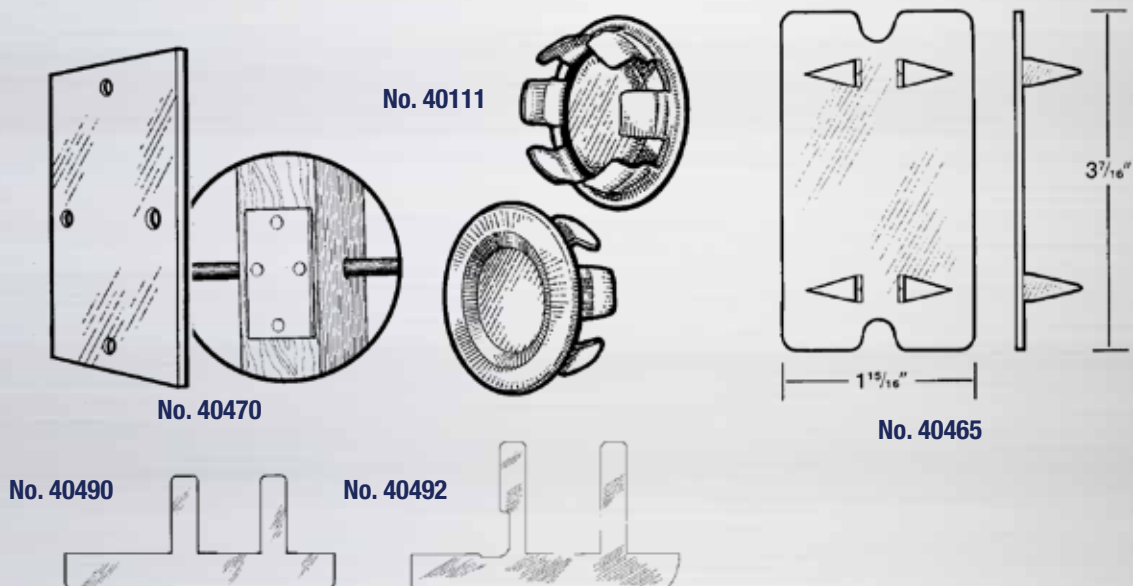


## GASKETS — 1/2" - 4"

11720	Full, 1/2"	100	1000
11721	Full, 3/4"	100	1000
11722	Full, 1"	50	500
11723	Full, 1-1/4" — 1-1/2"	—	600
11724	Full, 2"	—	400
11725	Full, 2-1/2" — 3"	—	200
11726	Full, 3-1/2" — 4"	—	150



# Knockout Seals, Switchbox Supports, and Nail Plates



Catalog No.	Description	Box Quantity	Carton Quantity	Weight Per 100 Units
<b>CLOSED TYPE KNOCKOUT SEALS; BRIGHT ZINC PLATED STEEL</b>				
40111	1/2"	100	1000	1.5 lbs.
40112	3/4"	100	1000	1.8 lbs.
40113	1"	50	500	2 lbs.
40114	1-1/4"	50	500	3 lbs.
40115	1-1/2"	50	500	4 lbs.
40116	2"	25	250	6 lbs.
<b>SWITCH BOX SUPPORTS</b>				
40490	Standard	50 pairs	500 pairs	3 lbs.
40492	Long Legs	50 pairs	500 pairs	3 lbs.
<b>NAIL PLATES (.062" THICK STEEL)</b>				
40465	1-15/16" x 3-7/16" Self-nailing	-	200	12 lbs.
40470	1-1/2" x 3" 4 nail holes	-	200	8 lbs.





# Mulberry Wallplates

**When U.S. made wallplates are specified for the job or needed to meet an ARRA requirement, make Mulberry your first choice!**

**Every metal wallplate in this catalog is manufactured right here in the USA!**

In addition, we offer:

- More than 7,000 different wallplates, with most in stock
- The industry's widest variety of materials, openings, combinations and colors
- A choice of over 40 painted metal, stainless steel, brass and other metal finishes
- Plus, our unbreakable thermoplastic wallplates available in 4 colors
- Standard metal wallplate configurations from 1 to 10-gang and thermoplastic from 1 to 6 gang
- In-house engraving and silk-screening capability
- Custom wallplates available in special sizes or with custom openings or markings



***Unsurpassed Quality, Selection & Service!***

# Mulberry Wallplates



## *Features and Benefits:*

### Painted Metal Wallplates

- Made from the finest steel alloy and then painted with a superior powder coat finish to assure durability.
- Durable paint finish helps prevent chipping and scratching.
- Can be re-painted to match a new room decor.
- Come with standard slotted 6-32 oval head metal screws in a matching paint finish.
- Available in a variety of shapes and sizes — Standard, Princess, Oversize and Maxi sizes.
- Princess shaped plates have rounded corners which help prevent wall damage and are also 1/2 inch taller in height to help cover any gaps or holes between sheetrock and an existing electrical box.
- UL Listed and made in the U.S.A.

### Stainless Steel, Brass, Bronze, Aluminum & Chrome Wallplates

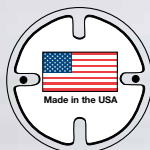
- Ideal for residential, commercial and institutional applications.
- Specification-grade, non-magnetic 304 type stainless steel available in either a Satin or Mirror Polish finish.
- Standard 430 type stainless steel also has excellent non-corrosive properties.
- Brass made from a 70/30 alloy is .040 inches thick and available with either a Satin or Mirror finish.
- UL Listed and made in the U.S.A.

### Thermoplastic Wallplates

- Made from rugged thermoplastic resin, Mulberry wallplates will not crack during installation or after many years of use.
- Will not fade or warp due to UV light or humidity.
- Resists grease, oils and solvents.
- Flexible design fits over uneven wall surfaces.
- C-UL-us Listed.

# Inside Our Metal and Thermoplastic Wallplate Section

Accessories	A84-88
Custom Plate Ordering Instructions	A89-91
Custom Silk-Screening & Engraving	A92
Datacom Telephone & Computer Plates	A67-71
Deep Plates	A64
Dimensions, Full Scale & By Style	A7-8
Emergency Plates & Covers	A80-82
Engraved & Silk-Screened Plates	A81-82, A92
GFCI & solated round	A81
Material Specifications	A9-10
Narrow Plates	A65-66
Oil & Gas Burner Plates	A80-81
Opening Selector Guide	A93-103
Painted Metal Wallplates—Standard Size	A11-22
Painted Metal Wallplates—Princess Size	A23-32
Painted Metal Wallplates—Oversize	A34-36
Painted Metal Wallplates—Maxi Size	A33
Recessed Home Entertainment Covers	A83
Stainless Steel, Chrome, Brass, Bronze & Aluminum Wallplates—Standard Size	A37-A46
Stainless Steel, Chrome & Brass Wallplates—Princess Size	A47-56
Stainless Steel, Chrome & Brass Wallplates—Oversize	A58-60
Stainless Steel & Chrome Wallplates—Maxi Size	A57
Thermoplastic Wallplates—Standard Size	A72-76
Thermoplastic Wallplates—Midi Size	A77-78
Thermoplastic Screwless Wallplates	A79
Unfinished Wallplates (Cold Rolled Steel)	A11-32
Wallplates with Classic Metal Finishes	A61-63
Wallplate Color Guide	A5-6



With the exception of our Thermoplastic Wall Plate Series, all of the wall plates in this catalog are made in the U.S.A. and comply with the Buy America Act. For more information or documentation, contact us.

# Mulberry Wallplates

Standard Size

WALLPLATES



83



93, 97, 70



68



95



99



98



85



84



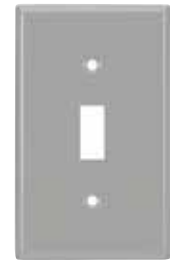
44



86



82



58



51



88



87



94



65



66



69



64



220



221



222



214



215



32



34



33



36



38

# Wallplates Color Guide

## Princess Size



### Standard Size - Steel

- 44 Almond Semi-Gloss (44000)
- 51 Red Semi-Gloss (51000)
- 58 Gray Semi-Gloss (58000)
- 64 Polished Brass (64000)
- 65 Bank Bronze (65000)
- 66 Satin Bronze (66000)
- 68 Stainless Steel-304 Type-Mirror (68000)
- 69 Statuary Bronze (69000)
- 70 Stainless Steel-304 Type (93000)
- 82 Brown Semi-Gloss (82000)
- 83 Polished Chrome (83000)
- 84 Ivory Semi-Gloss (84000)
- 85 White Wrinkle (85000)
- 86 White Semi-Gloss (86000)
- 87 Black Matte (87000)
- 88 Aluminum Painted Steel (88000)
- 93 Stainless Steel-304 Type (93000)
- 94 Satin Brass (94000)
- 95 Clear Anodized Aluminum (95000)
- 96 Satin Brass-.060" (96000)
- 97 Stainless Steel-430 Type (97000)
- 98 Brown Wrinkle (98000)
- 99 Ivory Wrinkle (99000)
- 214 Hammered Copper (21400)
- 215 Hammered Black (21500)
- 220 Regal Black (22000)
- 221 Regal Copper (22100)
- 222 Regal Gold (22200)

### Princess Size - Steel

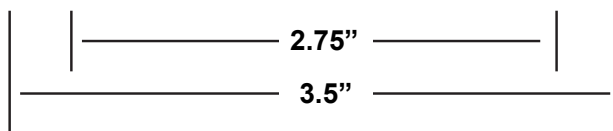
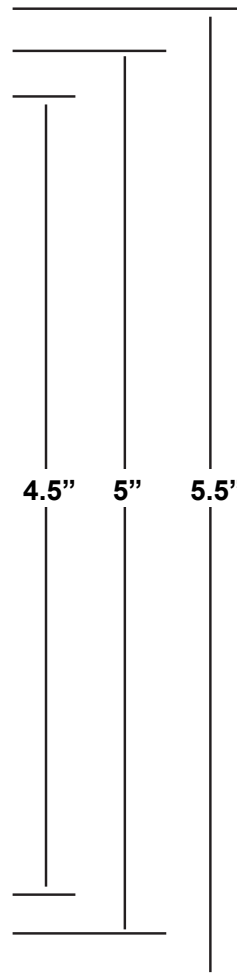
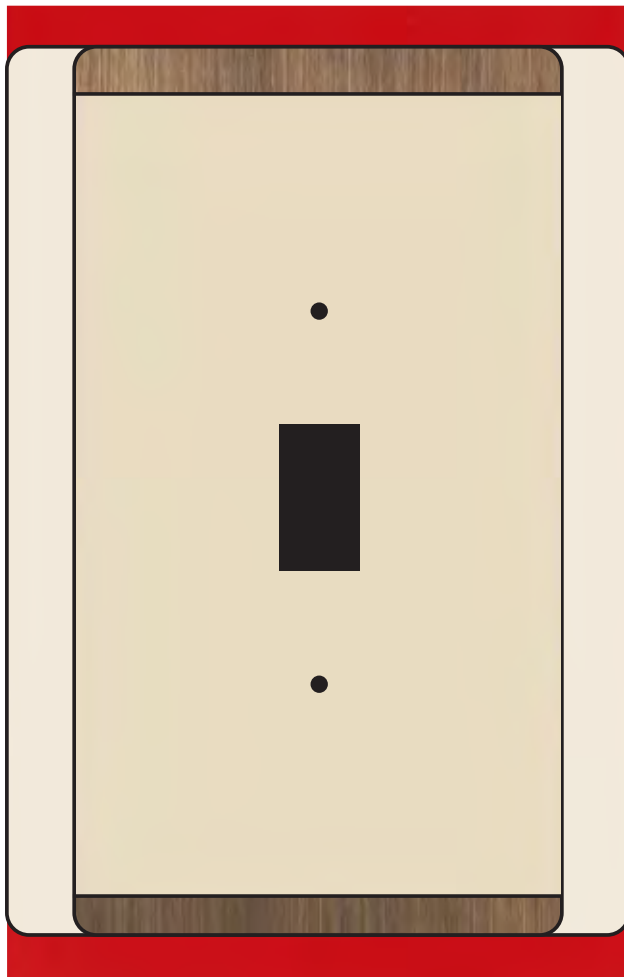
- 43 Almond Wrinkle
- 53 Stainless Steel-304 Type (93000)
- 54 Satin Brass (54000)
- 57 Stainless Steel-430 Type (97000)
- 73 Polished Chrome (73000)
- 74 Ivory Semi-Gloss (74000)
- 75 White Wrinkle (75000)
- 76 White Semi-Gloss (76000)
- 78 Brown Wrinkle (78000)
- 79 Ivory Wrinkle (79000)
- 218 Polished Brass over steel (21800)
- 225 Brushed Brass over steel (22500)

### Standard & Midi Size - Thermoplastic

- 32 White Thermoplastic (32000)
- 33 Light Almond Thermoplastic (33000)
- 34 Ivory Thermoplastic (34000)
- 36 Red Thermoplastic (36000)
- 38 Brown Thermoplastic (38000)



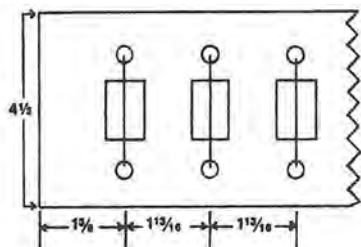
# Full Scale Dimensions



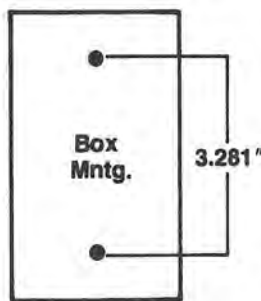
STANDARD TOLERANCE  $\pm 0.0313$ "

## Screw Hole Dimensions

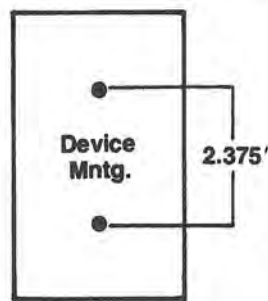
Standard Size



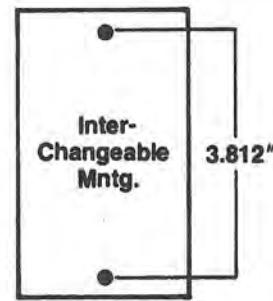
Examples:



Blank



Toggle  
Single  
Receptacle



Interchangeable  
(Despard)  
GFI

Refer to the dimensional drawings within our Opening Selector Guide

# Dimensions by Style

## Standard Shape

1 gang	4.5" x 2.75"
2 gang	4.5" x 4.562"
3 gang	4.5" x 6.375"
4 gang	4.5" x 8.187"
5 gang	4.5" x 10.00"
6 gang	4.5" x 11.812"
7 gang	4.5" x 13.625"
8 gang	4.5" x 15.437"
9 gang	4.5" x 17.25"
10 gang	4.5" x 19.062"
11 gang	4.5" x 20.875"
12 gang	4.5" x 22.687"
13 gang	4.5" x 24.50"
14 gang	4.5" x 26.312"
15 gang	4.5" x 28.125"
16 gang	4.5" x 29.937"
17 gang	4.5" x 31.75"
18 gang	4.5" x 33.687"
19 gang	4.5" x 35.50"
20 gang	4.5" x 37.312"

## Jumbo / Oversize (SL)

1 gang	5.5" x 3.50"
2 gang	5.5" x 5.50"
3 gang	5.5" x 7.50"
4 gang	5.5" x 9.50"
5 gang	5.5" x 11.50"
6 gang	5.5" x 13.50"
7 gang	5.5" x 15.50"
8 gang	5.5" x 17.50"

## Princess Shape (PRL)

1 gang	5" x 2.75"
2 gang	5" x 4.562"
3 gang	5" x 6.375"
4 gang	5" x 8.187"
5 gang	5" x 10.00"
6 gang	5" x 11.812"

## Maxi Shape (MP)

1 gang	5" x 3.50"
--------	------------

## Thermoplastic Standard Size

1 gang	4.5" x 2.76"
2 gang	4.5" x 4.57"
3 gang	4.5" x 6.38"
4 gang	4.5" x 8.19"
5 gang	4.5" x 10.03"
6 gang	4.5" x 11.81"

## Thermoplastic Midi Size

1 gang	4.88" x 3.11"
2 gang	4.88" x 4.92"
3 gang	4.88" x 6.77"
4 gang	4.88" x 8.58"

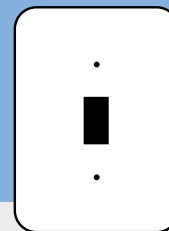
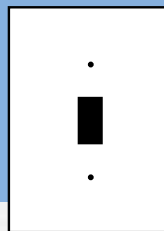
STANDARD TOLERANCE  $\pm 0.0313$ "

Dimensions for Deep and Narrow Plates see  
Pages A64 - A66.

Note: Standard Size and Jumbo/Oversize plates (beveled edge) can be made available in custom sizes.  
Princess and Maxi Shape plates, as well as thermoplastic plates, are only available up to 6 gangs.

# Material Specifications

S - Standard Shape



P - Princess Shape

WALLPLATES

<b>Steel</b> (Prepared to Underwriters Laboratories, Inc. specifications)	<b>Finish</b>	<b>Shape</b>	<b>Thickness</b>	<b>Finish Designator</b>	<b>Catalog Page</b>
Almond (ALM)	smooth semi-gloss	S	.030	44000	A11-22
Almond Wrinkle (DA-PRL)	hard baked wrinkle	P	.030	43000	A23-32
Aluminum Paint (CDA)	smooth semi-gloss	S	.030	88000	A11-22
Black Paint (BL)	matte	S	.030	87000	A11-22
Brown Paint (BK)	smooth semi-gloss	S	.030	82000	A11-22
Brown Paint (DB)	hard baked wrinkle	S	.030	98000	A11-22
Brown Paint (DB-PRL)	hard baked wrinkle	P	.030	78000	A23-32
Chrome Plate (CA)	mirror polish	S	.030	83000	A37-46
Chrome Plate (CA-PRL)	mirror polish	P	.030	73000	A47-56
Gray	smooth semi-gloss	S	.030	58000	A11-22
Ivory (IA)	smooth semi-gloss	S	.030	84000	A11-22
Ivory (IA-PRL)	smooth semi-gloss	P	.030	74000	A23-32
Ivory (DI)	hard baked wrinkle	S	.030	99000	A11-22
Ivory (DI-PRL)	hard baked wrinkle	P	.030	79000	A23-32
Red (RA)	smooth semi-gloss	S	.030	51000	A11-22
White (WA)	smooth semi-gloss	S	.030	86000	A11-22
White (WA-PRL)	smooth semi-gloss	P	.030	76000	A23-32
White (DW)	hard baked wrinkle	S	.030	85000	A11-22
White (DW-PRL)	hard baked wrinkle	P	.030	75000	A23-32
Hammered Copper	textured / matte	S	.030	21400	A61-63
Hammered Black	textured / matte	S	.030	21500	A61-63
Regal Black	textured / matte	S	.030	22000	A61-63
Regal Copper	textured / matte	S	.030	22100	A61-63
Regal Gold	textured / matte	S	.030	22200	A61-63
Zinc Coat (AUNF)	unfinished	S	.030	89000	A11-22
Zinc Coat (AUNF-PRL)	unfinished	P	.030	80000	A23-32

# Material Specifications

## Stainless Steel

Grade	Finish	Shape	Thickness	U.S. Bureau Standards Symbol	Finish Designator	Catalog Page
*Type 304 (304SS)	#4 Fine Satin	S	.030	US #32D	93000	A37-46
*Type 304 (304SS-PRL)	#4 Fine Satin	P	.030	US #32D	53000	A47-56
*Type 304 (304-6SS)	#4 Fine Satin	S	.060	US #32D	70000	A37-46
*Type 304 (304SP)	Mirror Polish	S	.030	US #32	68000	A37-46
Type 430 (SS)	#4 Fine Satin	S	.030	US #32	97000	A37-46
Type 430 (SS-PRL)	#4 Fine Satin	P	.030	US #32D	57000	A47-56

\* 304 Stainless steel is a specification grade that consists of 18% chromium and 8% nickel. It is non-magnetic and corrosion resistant. It is ideal for hospitals, schools and other public institutions, as well as computer rooms.

## Aluminum

Clear Anodized (4AA)	Matte, Smooth	S	.040	-	95000	A37-46
----------------------	---------------	---	------	---	-------	--------

## Brass & Bronze\*

Statuary Bronze Dark (4DBR)	Antique finish over solid brass	S	.040	US #20	69000	A37-46
Bank Bronze Medium (4ABR)	Antique finish over solid brass	S	.040	US #108	65000	A37-46
Satin Brass (4BB) (solid brass)	Satin #4 Polish	S	.040	US #4	94000	A37-46
Satin Brass (4BB-PRL) (solid brass)	Satin #4 Polish	P	.040	US #4	54000	A47-56
Satin Brass (6BB) (solid brass)	Satin #4 Polish	S	.060	US #4	96000	A37-46
Satin Bronze (4SBR)	Satin #4 Polish	S	.040	US #10	66000	A37-46
Polished Brass (4PB) (solid brass)	Mirror Finish	S	.040	US #3	64000	A37-46
Polished Brass (plated steel)	Mirror Finish	P	.040	-	21800	A47-56
Satin Brass (plated steel)	Satin #4 Polish	P	.040	-	22500	A47-56

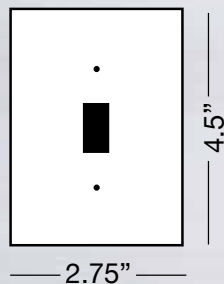
\* Lacquered to prevent oxidation

## Thermoplastic

Light Almond	33000	A72-79
Ivory	34000	A72-79
Red	36000	A72-79
White	32000	A72-79
Brown	38000	A72-76

# PAINTED METAL

Standard Size



One 30A 3 & 4  
Wire TL Recept. with  
1.730" ID Hole (3330R)



30/50A 3 Wire  
Range/Dryer  
Recept. with  
2.125" ID Hole (3D)



30/50A 3 Wire Range/  
Dryer Recept. w/  
2.125" ID Hole  
2 gang plate (23D)



30/50A 3 Wire  
Range/Dryer Recept.  
with 2.125"  
ID Hole (N23D)



30/50/60A 3 & 4  
Wire Recepts. with  
2.480" ID Hole (5R)



30/50A 3 & 4 Wire  
Range/Dryer Recept.  
2.165" ID Hole (5RR)



30/50/60A 4 Wire  
Recepts. With 2.625"  
ID Hole (L5R)



30/50/60A 4 Wire  
Offset Recepts.  
2.275" ID Hole (N5RR)



30/50/60A 4 Wire  
Receptacles  
2.255" ID Hole (P5R)



Louver, Horizontal  
(Device Mntg.  
2.375") (LH)



Louver, Vertical  
(Device Mntg.  
2.375") (LV)



2 Louvers  
(Device Mntg.  
2.375") (2LV)

	White Semi-Gloss (WA)	White Wrinkle (DW)	Ivory Semi-Gloss (IA)	Ivory Wrinkle (DI)	Brown Semi-Gloss (BK)	Brown Wrinkle (DB)	Almond Semi-Gloss (ALM)	Black Matte (BL)	Gray Semi-Gloss	Red Semi-Gloss (RA)	Aluminum Semi-Gloss (CDA)	Zinc Coat (AUNF) Unfinished
86229	85229	84229	99229	82229	98229			87229	58229	51229	88229	89229
86221	85221	84221	99221	82221	98221			87221	58221	51221	88221	89221
86222	85222	84222	99222	82222	98222			87222	58222	51222	88222	89222
86227	85227	84227	99227	82227	98227			87227	58227	51227	88227	89227
86223	85223	84223	99223	82223	98223			87223	58223	51223	88223	89223
86224	85224	84224	99224	82224	98224			87224	58224	51224	88224	89224
86225	85225	84225	99225	82225	98225			87225	58225	51225	88225	89225
86226	85226	84226	99226	82226	98226			87226	58226	51226	88226	89226
86228	85228	84228	99228	82228	98228			87228	58228	51228	88228	89228
86630	85630	84630	99630	82630	98630	44630		87630	58630	51630	88630	89630
86631	85631	84631	99631	82631	98631	44631		87631	58631	51631	88631	89631
86632	85632	84632	99632	82632	98632			87632	58632	51632	88632	89632

PAINTED METAL WALLPLATES - STANDARD SIZE