



SmartBox

Think Inside the Box

The 1-4 gang Smart Boxes are unmatched in versatility in new work locations where you can not swing a hammer and where final wall surfaces are uncertain example; kitchens and baths. They are unmatched in old or retro fit work applications because they are always mounted to a stud. Before the introduction of Smart Box all other manufacturers hung their cut boxes on flimsy 3/8 or 1/2 sheet rock, even worse lathe and plaster. Finally these 4 Smart Boxes are unmatched in adjustability as they are molded entirely of 1 piece with no moving parts to break or lose. The mounting screws in these boxes have a 42 lb. torque rating, a necessity for the function of these products.

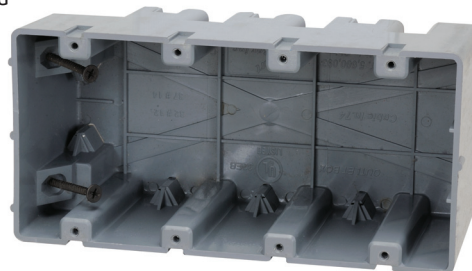
FEATURES & BENEFITS

- Available in 1, 2, 3, 4 gang and horizontal.
- Designed 100% with the electrician in mind.
- Step down feature allows for wire entrance in both top and bottom of box.
- Heavy duty 42 lbs mounting screws supplied.
- Mounts to wood or metal stud 25g.
- Extra thick PVC wall material creates stability and rigidity in product.
- Built in wire clamps.
- All 6/32 device holes are threaded.
- Use where final wall surface is uncertain; kitchens and baths.

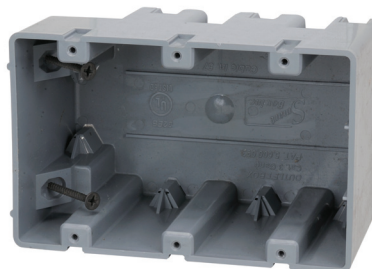
SPECIFICATIONS

Item#	Description	Inner Carton	Master Carton	Trade Size	Cubic Inches	Weight	UPC
MSB1G	1 Gang Device Box		100	1 Gang	18.5	27 lbs.	50784297017624
MSB2G	2 Gang Device Box		60	2 Gang	38	23 lbs.	50784297017648
MSB3G	3 Gang Device Box	20	40	3 Gang	57	2.5 lbs. - 20 lbs.	30784297017651
MSB4G	4 Gang Device Box	20	40	4 Gang	74	13 lbs. - 26 lbs.	30784297017668
MSBHZ	1 Gang Horizontal Device Box		50	1 Gang	22.5	15 lbs.	50784297017679
MSB22+	1 Gang Device Box {22.5/c}		50	1 Gang	22.5	15 lb	50784297017631

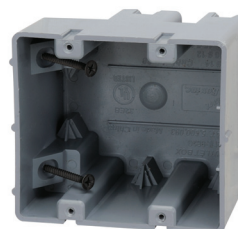
MSB4G



MSB3G



MSB2G



MSB1G

