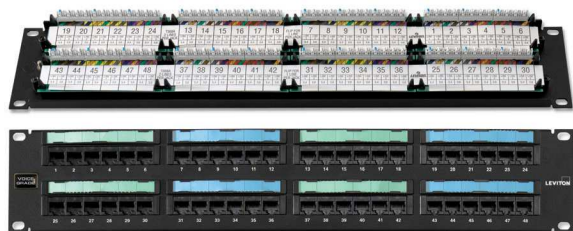


110-Style Voice-Grade Patch Panels

APPLICATION

Leviton 110-Style Voice-Grade Patch Panels are specifically designed for voice applications. Panels can be configured for one- or two-pair-per-port wiring schemes. Included is a rear label which delineates between the two wiring schemes and shows 25-pair, color-coded termination.



SPECIFICATION

Voice-Grade Patch Panels shall meet ANSI/TIA/-568-C standards compliance, ANSI/TIA-1096-A requirements, and be UL listed. The printed circuit board shall be rated UL94V-0. Panels shall be configured for 24 or 48 ports, mount on a standard 19-inch equipment rack, and accommodate top, bottom, and side cable entry. Patch panels shall be made of 16-gauge steel, with a black coat.

FEATURES

- 110-style connector for quick and easy punch-down. The connector has a separation mark between rack mounts
- Includes two threaded standoffs for attaching a Cable Management Bar
- Includes .6-inch wide 8P RJ45 jacks
- Color-coded 25-pair wiring information card

DESIGN CONSIDERATIONS

- Connector modules are built in groups of six
- Mounts on 19-inch wide equipment rack, or hinged wall-mount bracket

STANDARDS COMPLIANCE

ANSI/TIA-568-C
ANSI/TIA-1096-A (formerly FCC Part 68)
cULus Listed

PHYSICAL SPECIFICATIONS

Dimensions: See page two
Materials: 16-gauge steel, black coat. Plastic components are rated UL 94V-0

COUNTRY OF ORIGIN

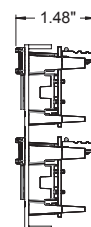
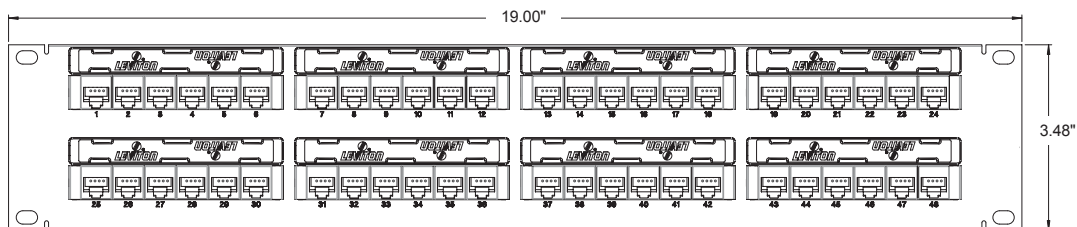
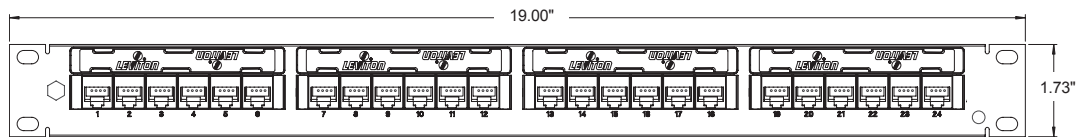
USA

WARRANTY INFORMATION

For a copy of Leviton product warranties, visit www.leviton.com/warranty.

ELECTRONIC FILES

For CAD files, typical specs, or technical drawings (.DXF, .DWG), visit www.leviton.com.



49013-Pxx

PART NUMBERS

Description	Part No.
110-Style Voice-Grade Patch Panel, 24 ports	49013-P24
110-Style Voice-Grade Patch Panel, 48 ports	49013-P48

