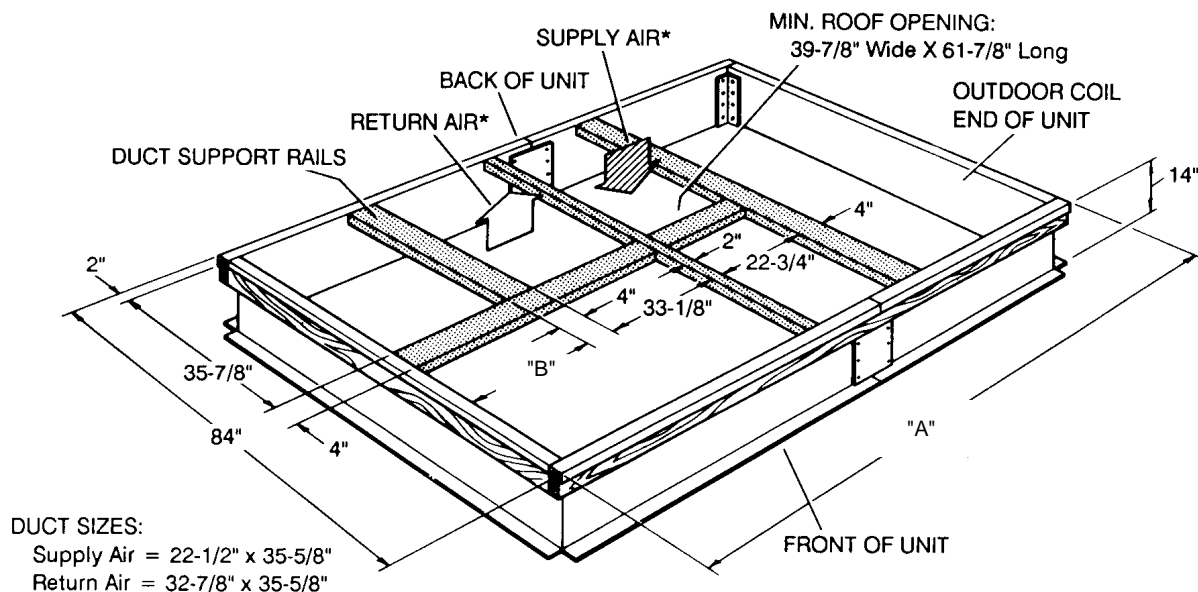


JOB NAME \_\_\_\_\_ LOCATION \_\_\_\_\_  
 PURCHASER \_\_\_\_\_ ORDER NO. \_\_\_\_\_  
 ENGINEER \_\_\_\_\_  
 SUBMITTED TO \_\_\_\_\_ FOR: Reference Approval Construction  
 SUBMITTED BY \_\_\_\_\_ DATE \_\_\_\_\_

UNIT DESIGNATION: Schedule No. \_\_\_\_\_ MODEL NO. \_\_\_\_\_

\* Supply and Return Air (Including duct support rails) as shown, are typical for bottom duct applications.

For location of horizontal duct applications (On back of unit), refer to Unit Dimension details.



MODEL	DIMENSION "A"	DIMENSION "B"	UNIT SIZE (TON)
1RC0436	115 1/4"	14 1/4"	15
1RC0437	126 1/4"	25 1/4"	20 and 25

**NOTE:**

1. Roof curb is built to NRCA standards.
2. Roof curb is constructed of 18 gauge G90 steel.
3. Unit duct supports are provided.
4. Full perimeter 4 wood nailer.
5. Curbs are shipped unassembled.
6. Corner hinge pins are used for assembly.

Refer to price pages for other details.

SUGGESTED ROOF OPENING		
MODEL	LENGTH	WIDTH
1RC0436	76"	80"
1RC0437	87"	80"

Subject to change without notice. Printed in the U. S. A.

**ROOF CURB  
 MODELS: 1RC0436 AND 1RC0437**

(FOR SUNLINE SERIES 15, 20 AND 25 TON SINGLE PACKAGE ROOFTOP MODELS)

FORM 530.22-SD12Y (297)

Supersedes: Nothing

**YORK®**  
 Heating and Air Conditioning