



**AGF Manufacturing Inc.**

**TESTANDRAIN®**

**Inspector's Test and Drain Valves  
for Residential and Commercial  
Wet Fire Sprinkler Systems**



BR-TESTANDRAIN\_V001.2 - 5/16

**Reliability, Versatility, Code Compatibility**

# The Most Reliable and Versatile Inspector's Test and Drain Valves in the Sprinkler Industry

AGF revolutionized the industry with the Model 1000 **TEST<sub>AN</sub>DRAIN**® single handle ball valve inspector's test which eliminated the time and space consuming traditional loop assembly. Since then, **TEST<sub>AN</sub>DRAIN**® valves have been installed in countless systems throughout the world. AGF continues to introduce innovative new products designed to simplify your installation. **TEST<sub>AN</sub>DRAIN**® valves are now made in more styles, in more sizes, and with more orifice options than any other valve on the market. AGF is the brand you rely on to give you all the options you need with the proven reliability you and your customers demand.

## TABLE OF CONTENTS

### TEST<sub>AN</sub>DRAIN®

M1000.....	3
M1011A.....	3
M1011T.....	3
M2500.....	4
M2511A.....	4
M2511T.....	4

### REMOTE<sub>TEST</sub>®

M1200.....	5
------------	---

### INSPECTOR'S<sub>TEST</sub>™

M1200.....	5
------------	---

### RISER<sub>PACK</sub>™

Residential M8000/M8011.....	6
Commercial M8000/M8011.....	6

### Accessories

Pressure Relief Valve.....	7
Pressure Gauge.....	7
Locking Plate Kit.....	7

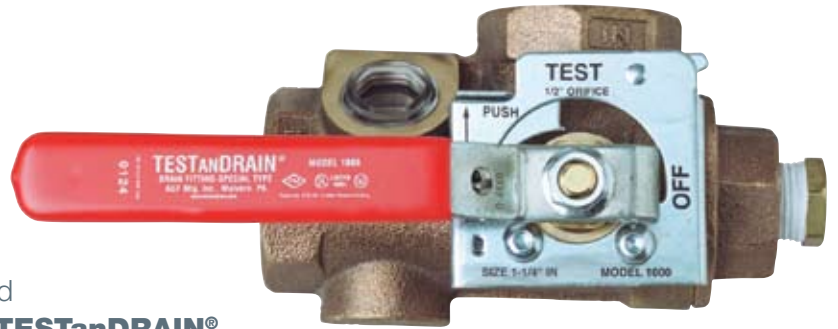




## TESTAnDRAIN®

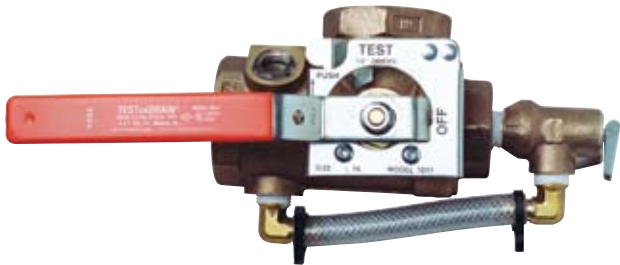
### Model 1000

Lightweight and compact, the Model 1000 **TESTAnDRAIN®** is a 300 PSI rated, single-handle ball valve specifically designed to provide both the test and express drain function required for a wet fire sprinkler system. The Model 1000 **TESTAnDRAIN®** meets all the requirements of NFPA 13D, NFPA 13R, and NFPA 13. It features a tamper resistant test orifice, integral tamper resistant sight glasses, and a tapped port for system access. The Model 1000 is available in 3/4", 1", 1 1/4", 1 1/2", and 2" sizes in both NPT and BSPT with all specifiable orifice sizes: 3/8" (2.8K), 7/16" (4.2K), 1/2" (5.6K), 17/32" (8.0K), 5/8" (ELO, 11.2K), 3/4" (ESFR, 14.0K), and K25.



## TESTAnDRAIN®

### Model 1011A

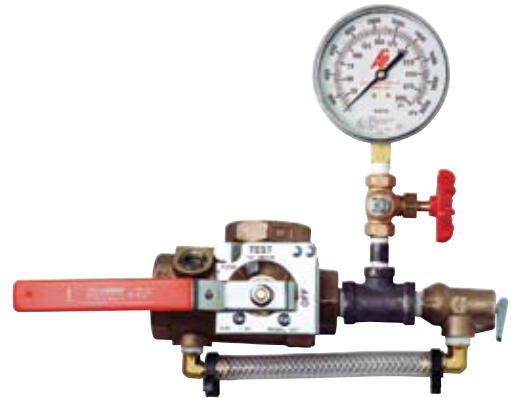


The Model 1011A is similar to the Model 1000 but it includes a UL Listed/FM Approved Model 7000 Pressure Relief Valve with drainage piping. It is designed to relieve excess pressure caused by surges or temperature changes while solving the difficult problem of providing the relief valve with a convenient drainage/piping outlet. The Model 1011A complies with the requirements of NFPA 13 which stipulate a pressure relief valve be installed on all grid systems and downstream of all pressure reducing valves.



## TESTAnDRAIN®

### Model 1011T



The Model 1011T has the same features and benefits as the Model 1011A with UL Listed/FM Approved Model 7000 Pressure Relief Valve but also includes a Model 7500 Pressure Gauge and Model 7600 1/4" 3-Way Globe Valve.

**AGF** TEST<sub>AN</sub>DRAIN<sup>®</sup>  
**Model 2500**

Like the Model 1000, the Model 2500 TEST<sub>AN</sub>DRAIN<sup>®</sup> is a 300 PSI rated, single-handle ball valve specifically designed to provide both the test and express drain function required for a wet fire sprinkler system, but with an alternative handle location for multi-directional installations. The Model 2500 is available in 1" and 1¼" NPT and 2" groove with all specifiable orifice sizes: ⅜" (2.8K), ⅞" (4.2K), ½" (5.6K), 17/32" (8.0K), 5/8" (ELO, 11.2K), ¾" (ESFR, 14.0K), and K25.



**AGF** TEST<sub>AN</sub>DRAIN<sup>®</sup>  
**Model 2511A**



The Model 2511A is similar to the Model 2500 with multi-directional installation capabilities, but includes a UL Listed/FM Approved Model 7000 pressure relief valve with drainage piping. It is designed to relieve excess pressure caused by surges or temperature changes while solving the difficult problem of providing the relief valve with a convenient drainage piping outlet. The Model 2511A complies with the requirements of NFPA 13 which stipulate a pressure relief valve be installed on all grid systems and downstream of all pressure reducing valves.

**AGF** TEST<sub>AN</sub>DRAIN<sup>®</sup>  
**Model 2511T**

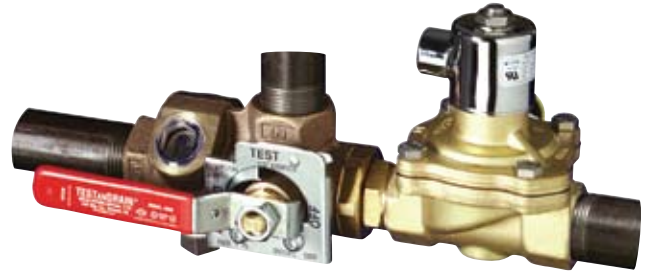


The Model 2511T has the same features and benefits as the Model 2511A with UL Listed/FM Approved Model 7000 Pressure Relief Valve but also includes a Model 7500 Pressure Gauge and Model 7600 ¼" 3-Way Globe Valve.



## REMOTE TEST® Model 1200

The Model 1200 **REMOTE TEST® TEST AND DRAIN®** saves time and conserves manpower by offering a self-contained method to "remotely" fulfill the primary function of the wet pipe system inspector's test. It is the only product that enables an individual to perform the inspector's test function on multiple systems from a central and remote position. The Model 1200, which retains the ability to be manually tested, can be integrated into an existing addressable fire alarm panel, wired to an auxiliary panel, or activated by a localized switch. The Model 1200 is also available with an optional bypass drain loop.



## INSPECTOR'S TEST™ Model 3011



The Model 3011 **INSPECTOR'S TEST™** valve family is designed to perform the remote inspector's test function on single story and other applications with the benefit of locating the orifice sizes:  $\frac{3}{8}$ " (2.8K),  $\frac{7}{16}$ " (4.2K),  $\frac{1}{2}$ " (5.6K),  $\frac{17}{32}$ " (8.0K),  $\frac{5}{8}$ " (ELO, 11.2K). Four models are available.

- Model 3011BV ball valve only
- Model 3011SG ball valve with sight glass
- Model 3011A ball valve with Model 7000 Pressure Relief Valve and drainage piping
- Model 3011ASG ball valve with sight glass, Model 7000 Pressure Relief Valve and drainage piping



## RESIDENTIAL RISERPACK™ for NFPA 13D

NFPA 13D **RISERPACK™** Floor Control Assemblies are designed to meet NFPA 13D requirements for residential wet fire sprinkler systems in family dwellings.



M8000 13D



M8011 13D



## RESIDENTIAL RISERPACK™ for NFPA 13R

NFPA 13R **RISERPACK™** Floor Control Assemblies are designed to meet NFPA 13R requirements for residential wet fire sprinkler systems in multi-family dwellings.



M8000 13R



M8011 13R



## COMMERCIAL RISERPACK™ for NFPA 13

NFPA 13 **RISERPACK™** Floor Control Assemblies are designed to meet NFPA 13 requirements for commercial wet fire sprinkler systems in commercial buildings.



M8000



M8011

## Pressure Relief Valve

The Model 7000 and Model 7200 are UL Listed/FM Approved pressure relief valves specifically designed for fire sprinkler systems. Both models relieve excess system pressure caused by surges or temperature changes and comply with NFPA 13 requirements that stipulate a pressure relief valve be installed on all grid systems and downstream of all pressure reducing valves. Both models feature a bronze body, stainless steel spring, and flushing handle to remove debris. The Model 7000 has a ½" MIPT inlet and FIPT outlet and is rated for installation in 175 PSI systems with other ratings available (165, 185, 195, 205, 225, and 250). The Model 7200 has a ¾" MIPT inlet and FIPT outlet and is rated for installation in 175 PSI systems.



## Pressure Gauge

The Model 7500 Pressure Gauge is a UL Listed/FM Approved 3½" gauge designed for use on wet sprinkler systems. The Model 7600 ¼" 3-Way Globe Valve is a UL Listed/FM Approved valve designed to connect the pressure gauge to the sprinkler systems. Both devices meet NFPA 13 requirements.



## Locking Plate Kit

Locking Plate Kits are available for the 1000 and 2500 series **TESTandDRAIN®** valves. Specifically designed to provide superior vandal resistance and to prevent unintentional alarm activation, Locking Plate Kits are highly recommended for public housing, schools, hospitals, and other public access areas. Locking Plate Kits eliminate the bothersome service calls caused by tampering. The kits allow the valve handle to be locked in the "OFF" position while still allowing easy access for inspection and maintenance.



### ***AGF Manufacturing, Inc.***

Since our founding, AGF Manufacturing, Inc. has been committed to providing a unique line of products for the fire sprinkler industry. We strive to maintain a close working relationship with our customers in order to meet the ever increasing demands of our industry. Over the years, this has helped us introduce many innovative products designed to meet a wide variety of needs. In filling these needs, we have built a strong reputation for providing the best products backed by an unwavering commitment to customer satisfaction. We continually work in the field to improve existing products, as well as invent new items.

At AGF our mission is to design and manufacture unique products that engineers and architects can specify with confidence based on a proven record of reliability and fiscal accountability, and that make the contractor's job more efficient and competitive by providing cost-effective labor savings.

Our entire product line is manufactured to the highest quality and meets or exceeds ISO 9002 standards. Our valves are approved by Underwriters Laboratories and FM Approvals, LLC. This commitment to quality enhances product reliability and end user satisfaction.



**AGF Manufacturing Inc.**

100 Quaker Lane • Malvern, PA 19355

Phone: 610-240-4900

Fax: 610-240-4906

**[www.testandrain.com](http://www.testandrain.com)**