

# EVERYDAY EASE



*Models include:  
136364PC,  
148344PSC,  
160344PS,  
160304PS*

## SECTIONAL SHOWERS WITH LOW-PROFILE ENTRY

Along with code-compliant bath products, we offer a variety of everyday showers and tub-shower combinations with universal design features built in. Case in point: Our four-piece sectional showers are equipped with reduced thresholds and integral seats that enhance access and usability.



*Models include:  
6032APAN  
6030SPAN*

## SEATED TUB-HEIGHT SHOWER BASES

When the family bathtub becomes more hazardous than helpful, our everyday seated shower bases are a smart replacement. With tub-height walls, reduced thresholds, integral seats and end drains, our models are perfectly configured to transform a potentially unsafe bath area into a comfortable and welcoming oasis.

# ACCESSIBLE ACCESSORIES



HANDHELD SHOWER



VINYL FLEXIBLE DAM



COLOR UPGRADE



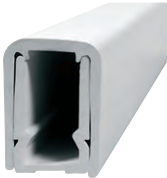
DOME LIGHT



SOAP HOLDERS



PRESSURE-BALANCING MIXING VALVE



OPTIONAL THRESHOLD



CURTAIN & ROD



COMPRESSED-FIT BRASS DRAIN

## GRAB BARS

---



Standard



Designer (Optional)

STRAIGHT



HORIZONTAL L-SHAPED

# ACCESSIBLE ACCESSORIES

## SEATS

---



### TRI-FOLD REMOVABLE

Available in white.



### FOLD-UP

Available in phenolic white or phenolic teak.



### L-SHAPED

Available in cushioned and phenolic white or phenolic teak.



### RECTANGULAR

Available in cushioned and phenolic white or phenolic teak.

## COLOR PALETTE

### STANDARD



White

### UPGRADED



\*Almond



Biscuit



\*Bone

Please use this color chart as a preliminary reference only. Contact your local Aquatic distributor to view an actual color sample.

\*Available on AcrylX™ models only.

# ACCESSIBLE OPTIONS



## PERFECT FINISHES

Our bath products offer several wall finish options for unique customization. Tile-pattern and smooth wall finishes will create the perfect look. Options include: Smooth Wall, Smooth Tile, Subway Tile and Diagonal Tile.



## REINFORCEMENT

All accessible products are pre-configured with required reinforcement for future installation of grab bars, seats and other accessories. We also offer an option to upgrade to full-wall reinforcement on all three walls.



## CHOICE OF SURFACE MATERIALS

Aquatic code-compliant bath products are available in two high-quality materials to suit the needs of almost any application. Our premium cast acrylic products are specially formulated for exceptional durability and luster. We also offer a wide selection of AcrylX™ applied acrylic products that are easy to clean and maintain.



## SEAMLESS AND SECTIONAL OPTIONS

If you're looking for a seamless appearance that's attractive and durable, our one-piece designs are an ideal choice. For remodeling projects, or applications where space is limited, we also offer code-compliant models in two- and four-piece configurations.

## ACCESSIBILITY STANDARDS/CODE COMPLIANCE

The following standards provide technical design criteria/guidelines for accessibility for a tub or shower. Not all standards apply to every Aquatic accessible bath fixture. See model description for specific code compliance.

- **ADA** – Americans with Disabilities Act (Accessibility Guidelines, September 2010)
- **ANSI** – American National Standards Institute (A117.1-2009: Accessible and Usable Buildings and Facilities)
- **521 CMR** – Code of Massachusetts Regulations
- **TAS** – Texas Accessibility Standards, March 2012
- **FHA** – Fair Housing Act (FHA Design Manual)
- **TITLE 24** – California Building Standards Code (California Code of Regulations, Title 24)