



Supply Boxes



The choice of plumbing professionals.

Oatey Innovation

For years, since 1916, Oatey has serviced plumbing professionals with innovative products, providing quality performance with the contractor in mind.

In 2005, Oatey introduced the Quadtro® washing machine outlet box, a truly revolutionary product with the versatility to handle any challenge on the job site. The 'Lock & Load' valve mounting system makes positioning the supply valve quick and easy, which gives the versatility the contractor needs to address the different residential and commercial applications. Over the years, installation practices and customer requirements have evolved, as more technologies and services are being added in residential and light commercial applications. These new requirements vary throughout the country and customers want simpler, stream-lined solutions to address the demand for installation speed and versatility.

Once again, Oatey has listened, and responded. Through years of intensive field research, Oatey has refreshed the washing machine outlet box offering by eliminating

redundancy, adding innovation, and simplifying the product line to just three washing machine outlet box styles. Not only does this make things easier for the contractor, but it also provides the flexibility to address those unexpected applications on the job site.

Oatey is pleased to introduce the new line up:

- **The Centro II:** a compact washing machine box that hardly takes up space and fits almost anywhere.
- **The 2x4:** a versatile washing machine box that allows a single connection to drain the washing machine hose, AC condensate, water softener, discharge and/or humidifier lines
- **The Quadtro:** the ultimate solution for installation flexibility

The 'Big Three' boxes provide superior mounting flexibility to accommodate any challenge on the job site.

That's why we're the choice for plumbing professionals.

CENTRO II

Centro Center Drain Supply Boxes Offer Flexibility, Easy Installation

Our new Centro Center Drain Washing Machine Outlet Boxes offer the best of both worlds – easy installation and compact box design. Made of PVC and supplied with two mounting brackets, count on Centro boxes for maximum durability and performance in residential applications.

The durable design gives you maximum flexibility, with a wide variety of tail piece configurations in a sleek compact design.



2x4

2 Ports X 4 Drains = Flexible Installation Options



The 2 X 4 Washing Machine Outlet Boxes provide superior mounting flexibility to accommodate a variety of valve/drain arrangements.

As installation practices and codes vary throughout the different regions of the country, the 2 X 4 is designed for application versatility and fast installation on the job site.

Made of PVC, you can count on the 2 X 4 for maximum durability and performance.



QUADTRO



When you need a washing machine outlet box, think Quadtro. The Quadtro is the ultimate solution for installation flexibility. The patented, versatile design allows for right, left, or center drain and bottom or top mount valves. Made of high impact polystyrene and supplied with four mounting brackets, the Quadtro boxes provide maximum durability and performance for residential applications.



1

Centro II Center Drain Supply Boxes Offer Flexibility, Easy Installation

1. Silver Handles with Temperature Indicators

Provides flexibility for top and bottom handles without changing the handles

2. PVC Material

Provides additional rigidity and durability for the installation

3. Knock-Outs

Designed to be easily and effortlessly removed

4. Mounting Support Ribs

Allows for direct mount to the stud.
Support Bracket can be added for additional support.

5. Compact Size

Takes up less space and fits almost anywhere

6. Flexibility

Boxes are available with installed or uninstalled valves, giving you the choice of mounting options.



Oatey® Centro II Center Drain Supply Boxes

Part Number	Valve	Tail Piece	Valves Assembled/ Unassembled	Pack Type	Pack Quantity
No Hammer					
38100	1/4 Turn	Copper	Assembled	Standard	12
38108	1/4 Turn	Copper	Unassembled	Standard	12
38150	1/4 Turn	Copper	Assembled	Contractor	12
38102	1/4 Turn	CPVC	Assembled	Standard	12
38110	1/4 Turn	CPVC	Unassembled	Standard	12
38153	1/4 Turn	CPVC	Assembled	Contractor	12
38104	1/4 Turn	ASTM F1807	Assembled	Standard	12
38112	1/4 Turn	ASTM F1807	Unassembled	Standard	12
38151	1/4 Turn	ASTM F1807	Assembled	Contractor	12
38106	1/4 Turn	ASTM F1960	Assembled	Standard	12
38114	1/4 Turn	ASTM F1960	Unassembled	Standard	12
38152	1/4 Turn	ASTM F1960	Assembled	Contractor	12
Hammer					
38101	1/4 Turn	Copper	Assembled	Standard	12
38109	1/4 Turn	Copper	Unassembled	Standard	12
38154	1/4 Turn	Copper	Assembled	Contractor	12
38103	1/4 Turn	CPVC	Assembled	Standard	12
38111	1/4 Turn	CPVC	Unassembled	Standard	12
38157	1/4 Turn	CPVC	Assembled	Contractor	12
38105	1/4 Turn	ASTM F1807	Assembled	Standard	12
38113	1/4 Turn	ASTM F1807	Unassembled	Standard	12
38155	1/4 Turn	ASTM F1807	Assembled	Contractor	12
38107	1/4 Turn	ASTM F1960	Assembled	Standard	12
38115	1/4 Turn	ASTM F1960	Unassembled	Standard	12
38156	1/4 Turn	ASTM F1960	Assembled	Contractor	12
38120	Plain Box	-	-	Display	4
38121	Plain Box	-	-	Standard	12

Note: Brackets, faceplates, and temperature indicator clips are available as accessories.

Installations



Center mount



Left side mount to stud



Right side mount to stud



Center mount, valve on top

and many others...



Designed with the Job Site in Mind

1. Silver Handles with Temperature Indicators

Provides flexibility for top and bottom valves without changing the handles

2. PVC Material

Provides additional rigidity and durability for the installation

3. Knock-Outs

Designed to not fall into the drain. If it does, the knock-out will flow through the plumbing and not block the trap

4. Pipe Support

Retains discharge lines in the box and ensures that it is centered over the drain port.

5. Drains

Allows four options for drain location

6. Single Lever (Option)

Allows the valves to operate as one single unit

7. Plug

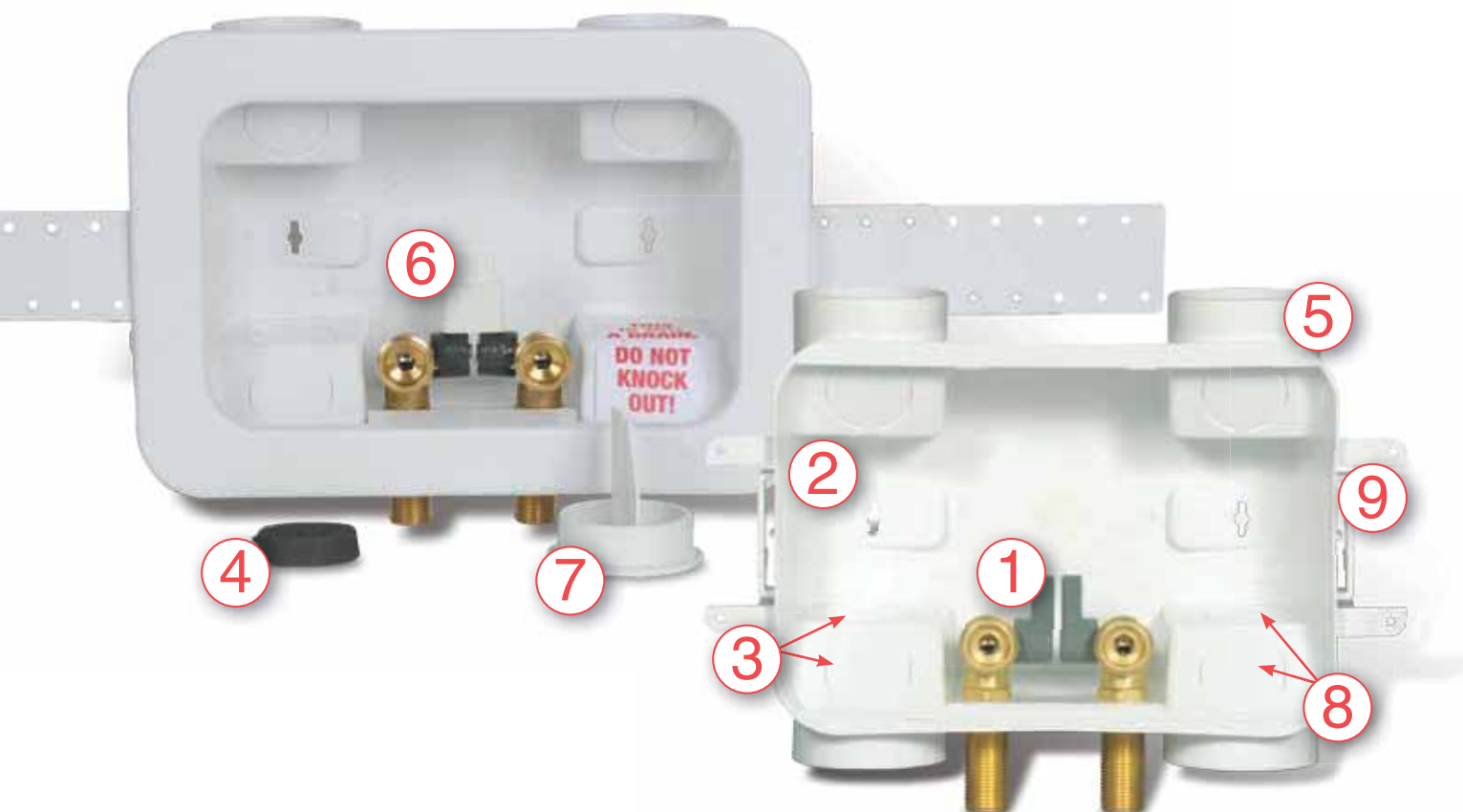
Prevents the use of drain that does not have the proper plumbing

8. Two Knock-Outs, One Drain

Allows for two service hoses to share a common drain

9. Mounting Support Ribs

Allows for direct mount to the stud. Support Bracket can be added for additional support.



Part Number	Valve	Tail Piece	Valves Assembled/ Unassembled	Pack Type	Pack Quantity
No Hammer					
38201	1/4 Turn	Copper	Assembled	Standard	12
38261	1/4 Turn	Copper	Unassembled	Standard	12
38240	1/4 Turn	Copper	Assembled	Contractor	12
38205	1/4 Turn	CPVC	Assembled	Standard	12
38265	1/4 Turn	CPVC	Unassembled	Standard	12
38243	1/4 Turn	CPVC	Assembled	Contractor	12
38209	1/4 Turn	ASTM F1807	Assembled	Standard	12
38269	1/4 Turn	ASTM F1807	Unassembled	Standard	12
38241	1/4 Turn	ASTM F1807	Assembled	Contractor	12
38216	1/4 Turn	ASTM F1960	Assembled	Standard	12
38276	1/4 Turn	ASTM F1960	Unassembled	Standard	12
38242	1/4 Turn	ASTM F1960	Assembled	Contractor	12
38200	Single Lever	Copper	Assembled	Standard	12
38262	Single Lever	Copper	Unassembled	Standard	12
38204	Single Lever	CPVC	Assembled	Standard	12
38266	Single Lever	CPVC	Unassembled	Standard	12
38208	Single Lever	ASTM F1807	Assembled	Standard	12
38268	Single Lever	ASTM F1807	Unassembled	Standard	12
38215	Single Lever	ASTM F1960	Assembled	Standard	12
38275	Single Lever	ASTM F1960	Unassembled	Standard	12
Hammer					
38203	1/4 Turn	Copper	Assembled	Standard	12
38263	1/4 Turn	Copper	Unassembled	Standard	12
38244	1/4 Turn	Copper	Assembled	Contractor	12
38207	1/4 Turn	CPVC	Assembled	Standard	12
38267	1/4 Turn	CPVC	Unassembled	Standard	12
38247	1/4 Turn	CPVC	Assembled	Contractor	12
38212	1/4 Turn	ASTM F1807	Assembled	Standard	12
38272	1/4 Turn	ASTM F1807	Unassembled	Standard	12
38245	1/4 Turn	ASTM F1807	Assembled	Contractor	12
38219	1/4 Turn	ASTM F1960	Assembled	Standard	12
38279	1/4 Turn	ASTM F1960	Unassembled	Standard	12
38246	1/4 Turn	ASTM F1960	Assembled	Contractor	12
38202	Single Lever	Copper	Assembled	Standard	12
38260	Single Lever	Copper	Unassembled	Standard	12
38206	Single Lever	CPVC	Assembled	Standard	12
38264	Single Lever	CPVC	Unassembled	Standard	12
38211	Single Lever	ASTM F1807	Assembled	Standard	12
38271	Single Lever	ASTM F1807	Unassembled	Standard	12
38128	Single Lever	ASTM F1960	Assembled	Standard	12
38278	Single Lever	ASTM F1960	Unassembled	Standard	12

Note: Brackets, faceplates, temperature indicator clips, plugs, and secondary line connectors are available as accessories.

Installations



Right drain, box mounted center



Right drain, box mounted on right stud



Left drain, box mounted on left stud



Left drain, box mounted on left stud with valve on top

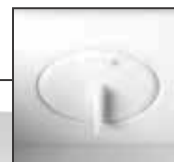
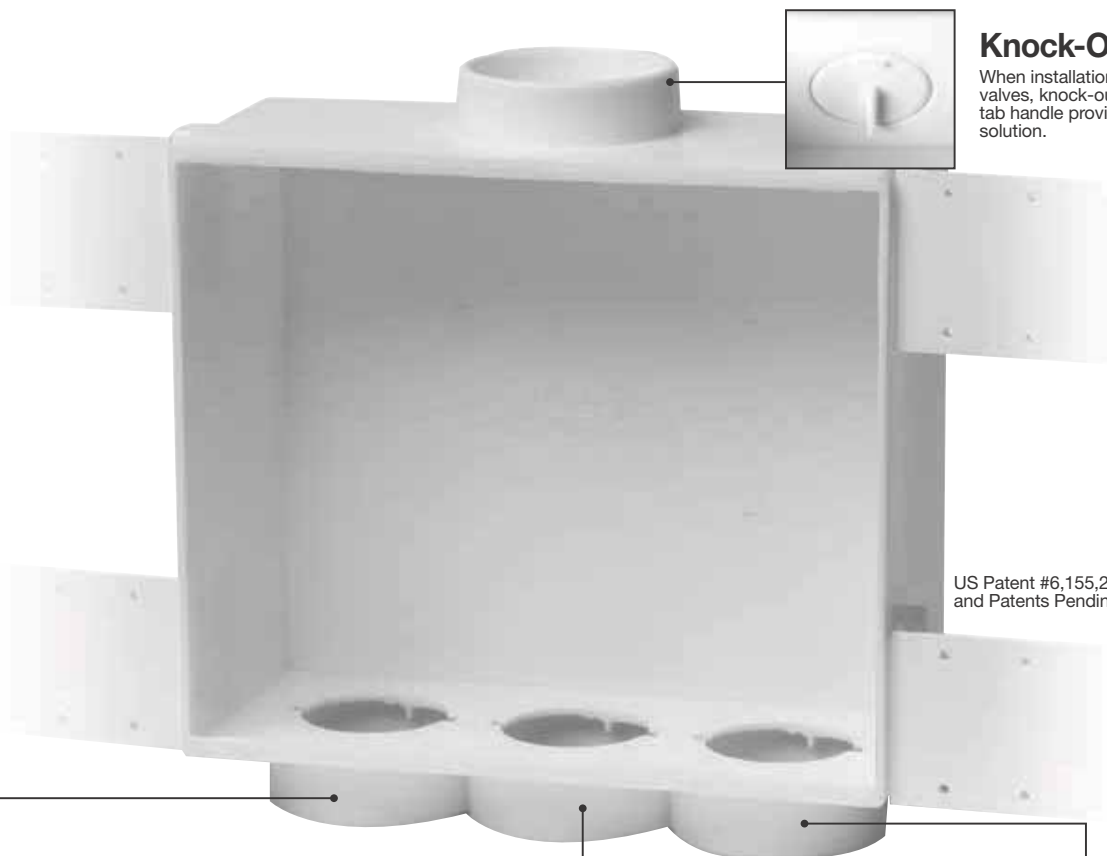


Right drain, box mounted on right stud with secondary drain line

and many others...

4 3

QuadTRO™ Handles the Challenges of Any Job Site.



Knock-Out Test Cap

When installation requires top mount valves, knock-out test cap with integral tab handle provides drain testing solution.

US Patent #6,155,286
and Patents Pending



Valve Hub

Valves supplied mounted on hubs that install with a 1/4 turn clockwise rotation. Always position red handle valve (hot) left of blue handle valve (cold).



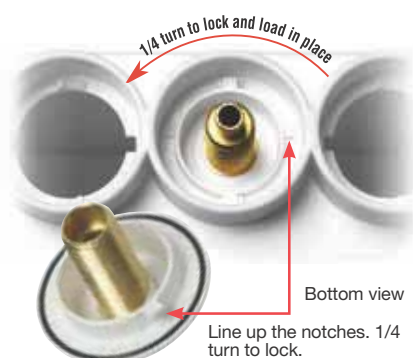
Single Lever Valve Hub

Valve supplied mounted on a hub that snaps into place for a left or right drain outlet installation.

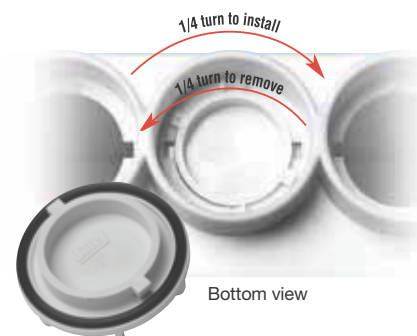


Mechanical Test Cap will not fall into drain

Test cap installs with a 1/4 turn counter-clockwise rotation. Tighten with channel locks. Remove with a 1/4 turn clockwise rotation.



Bottom view





1/4 turn valves with copper connections & center drain.



Top mount 1/4 turn valves with CPVC connections & center drain.



Top mount 1/4 turn hammer arrestor valves with copper connections & center drain.



1/4 turn hammer arrestor valves with CPVC connections & center drain.



1/4 turn valves with copper connections & right offset drain.



Single lever valve with copper connections & left offset drain.



Top mount single lever hammer arrestor valve with pex connection & center drain.



Single lever hammer arrestor valve with pex connection & right offset drain.

Part Number	Valve	Tail Piece	Valves Assembled/ Unassembled	Pack Type	Pack Quantity
No Hammer					
38530	1/4 Turn	Copper	Unassembled	Standard	12
38560	1/4 Turn	Copper	Unassembled	Contractor	12
38529	1/4 Turn	Copper	Unassembled	Display	4
38531	1/4 Turn	CPVC	Unassembled	Standard	12
38561	1/4 Turn	CPVC	Unassembled	Contractor	12
38528	1/4 Turn	ASTM F1807	Unassembled	Display	4
38532	1/4 Turn	ASTM F1807	Unassembled	Standard	12
38562	1/4 Turn	ASTM F1807	Unassembled	Contractor	12
38533	1/4 Turn	ASTM F1960	Unassembled	Standard	12
38563	1/4 Turn	ASTM F1960	Unassembled	Contractor	12
38551	1/4 Turn	Compression	Unassembled	Standard	12
38535	Single Lever	Copper	Unassembled	Standard	12
38568	Single Lever	Copper	Unassembled	Display	4
38536	Single Lever	CPVC	Unassembled	Standard	12
38537	Single Lever	ASTM F1807	Unassembled	Standard	12
38538	Single Lever	ASTM F1960	Unassembled	Standard	12
38552	Boiler Drain	Copper	Unassembled	Standard	12
38553	Boiler Drain w/stop	Copper	Unassembled	Standard	12
38554	No. American Boiler Drain	Copper	Unassembled	Standard	12
Hammer					
38540	1/4 Turn	Copper	Unassembled	Standard	12
38569	1/4 Turn	Copper	Unassembled	Display	2
38541	1/4 Turn	CPVC	Unassembled	Standard	12
38542	1/4 Turn	ASTM F1807	Unassembled	Standard	12
38543	1/4 Turn	ASTM F1960	Unassembled	Standard	12
38545	Single Lever	Copper	Unassembled	Standard	12
38546	Single Lever	CPVC	Unassembled	Standard	12
38547	Single Lever	ASTM F1807	Unassembled	Standard	12
38548	Single Lever	ASTM F1960	Unassembled	Standard	12
38550	Plain Box	-	Unassembled	Standard	12

Supply Box Accessories

CENTRO II



Product Number	Description	Carton Quantity
38381	Centro II, Plastic Faceplate	12
38382	Brackets 4" Long Plastic	12
38383	Brackets 12" Long Plastic	12
38294	Hot/Cold Temperature Indicator Clips for Supply Valves (12 Red, 12 Blue)	24



Product Number	Description	Carton Quantity
38290	2x4 Plastic Faceplate	12
38291	2x4 Plastic Brackets, 8" long	24
38292	2x4 Secondary Line Connector	12
38293	2x4 Plug	12
38294	Hot/Cold Temperature Indicator Clips for Supply Valves (12 Red, 12 Blue)	24
38295	Single Lever Handle Connector	12



Product Number	Description	Carton Quantity
38550	Plain Box No Valves - Standard Pack with Grommets	12
38460	Quadro Test Cap and Gauge	1
38576	Quadro Test Cap	12
38577	Quadro Hub/O-Ring	24
38941	Quadro Plastic Faceplate	12
38768	Brackets, 4" Long Plastic	12
38648	Brackets, 12" Long Plastic	12



4700 W. 160th St. | Cleveland, OH 44135
800.321.9532 | Fax: 800.321.9535
www.oatey.com

This information is based on data believed to be reliable but Oatey makes no warranties, express or implied, as to its accuracy and assumes no liability arising out of its use. The data listed falls within the normal range of product properties but should not be used to establish specification limits or used alone as the basis of design. Oatey's liability to purchasers is expressly limited to the terms and conditions of sale. Oatey is a trademark of Oatey Co.

DISTRIBUTED BY

OATEYSCS®
Supply Chain Services

4675 W. 160th St. | Cleveland, OH 44135
800.321.9532 | Fax: 800.321.9535
www.oateyscs.com

LCSXXX 02/14