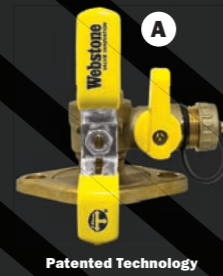


Webstone

VALVE INNOVATION



The ISOLATOR
UNI-FLANGE BALL VALVE[®]

REPLACES 6 COMPONENTS
ELIMINATES 5 LEAK PATHS
SAVES 45 MINUTES OF LABOR

AVAILABLE IN PRESS



The ISOLATOR
UNI-FLANGE BALL VALVE[®]

REPLACES 3 COMPONENTS
ELIMINATES 2 LEAK PATHS
SAVES 18 MINUTES OF LABOR

AVAILABLE IN PRESS



BALL DRAIN

REPLACES 4 COMPONENTS
ELIMINATES 3 LEAK PATHS
SAVES 27 MINUTES OF LABOR

Drains from above or below the ball!

AVAILABLE IN PRESS



**PRIMARY/SECONDARY
PURGE TEE**

REPLACES 5 COMPONENTS*
ELIMINATES 4 LEAK PATHS
SAVES 36 MINUTES OF LABOR

But correct spacing for hydraulic separation cannot be achieved using off-the-shelf components. The Purge Tee is the ONLY way to place a valve between closely spaced tees.



UNION BALL DRAIN

REPLACES 6 COMPONENTS
ELIMINATES 5 LEAK PATHS
SAVES 45 MINUTES OF LABOR

Drains from above or below the ball!

HYDRO-CORE

DOUBLE BALL DRAIN MANIFOLD

REPLACES 19 COMPONENTS
ELIMINATES 17 LEAK PATHS
SAVES 2.5 HOURS OF LABOR

FLANGE LEFT & RIGHT ALSO AVAILABLE



HYDRO-CORE

COMPLETE NEAR BOILER PIPING KIT

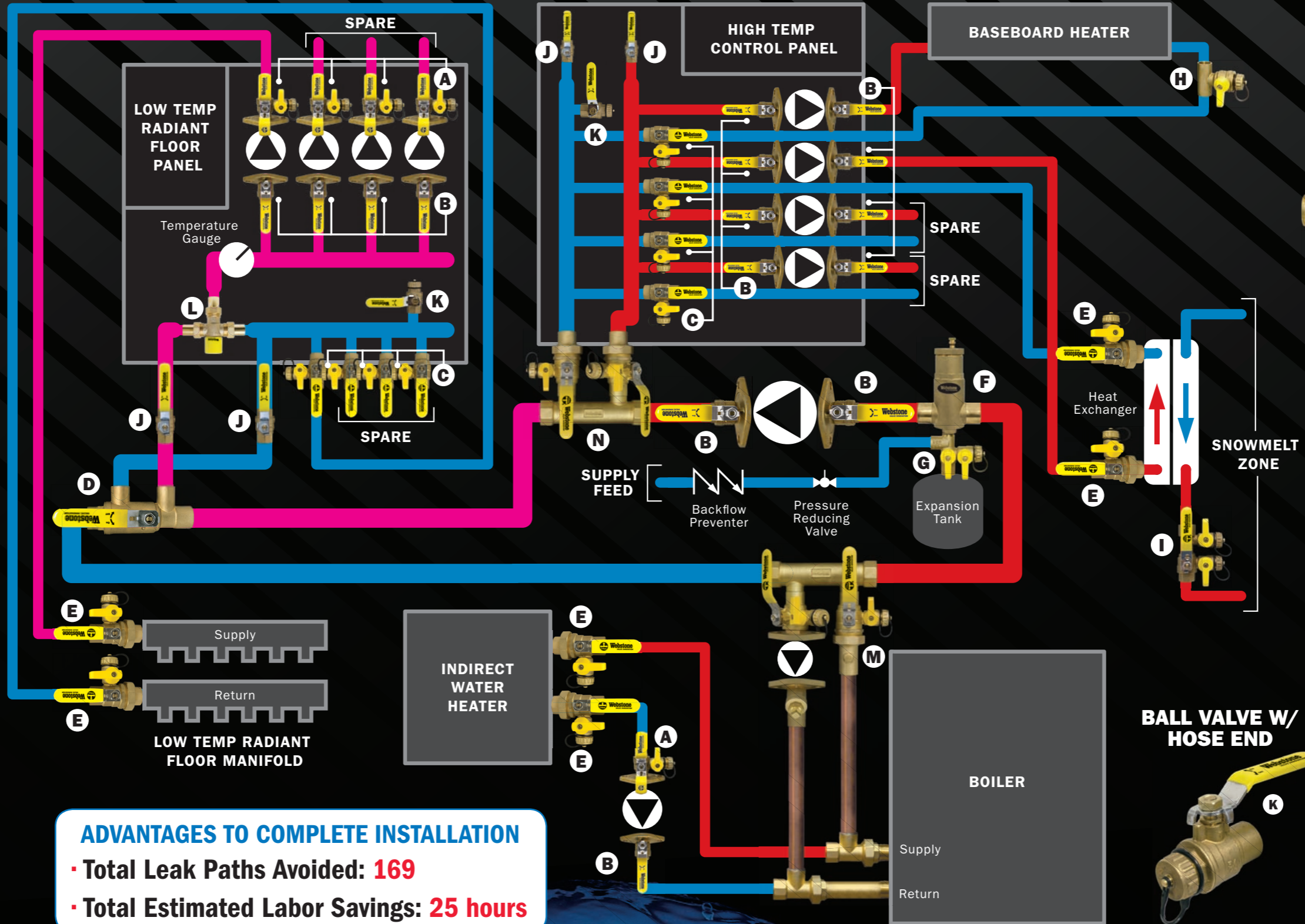
REPLACES 34 COMPONENTS
ELIMINATES 29 LEAK PATHS
SAVES OVER 4 HOURS OF LABOR

ALSO AVAILABLE AS COMPONENT KITS



THEMOSTATIC MIXING VALVE

AVAILABLE IN PRESS



AIR SEPARATOR

AVAILABLE IN PRESS



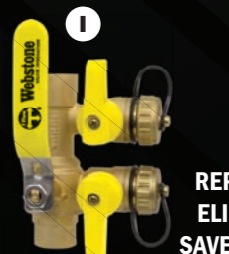
**EXPANSION TANK
PRO SERVICE VALVE**

REPLACES 7 COMPONENTS
ELIMINATES 6 LEAK PATHS
SAVES 54 MINUTES OF LABOR



DRAIN

REPLACES 2 COMPONENTS
ELIMINATES 1 LEAK PATH
SAVES 9 MINUTES OF LABOR



PURGE & FILL

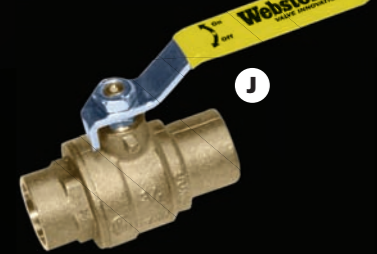
REPLACES 7 COMPONENTS
ELIMINATES 6 LEAK PATHS
SAVES 54 MINUTES OF LABOR

BALL VALVE W/ HOSE END



BRASS BALL VALVES

AVAILABLE IN PRESS



ADVANTAGES TO COMPLETE INSTALLATION

- Total Leak Paths Avoided: **169**
- Total Estimated Labor Savings: **25 hours**

www.webstonevalves.com P: (800) 225-9529 F: (800) 336-5133

This content has been provided for the express purpose of demonstrating a product's function in a system and should not be used as a reference for designing or assembling any working installation. The user is solely responsible for ensuring that all products are used and all systems are designed in accordance with all applicable federal, state and local codes.

© 2009 HPS Controls, Edmonton AB Canada. The Isolator[®] and Pro-Pal[®] are registered trademarks of Webstone Company, Inc. © 2014 Webstone Company Inc. FORM: OD0614

A THE ISOLATOR™ W/ ROTATING FLANGE & MULTI-FUNCTION DRAIN
Full Port Forged Brass Uni-Flange Ball Valve w/ Detachable Rotating Flange
Multi-Function Drain, Adjustable Packing Gland, Nuts & Bolts - 600 WOG

SIZE	ITEM #	CTN/CASE
IPS × Rotating Flange		
3/4"	41413	2/20
1"	41414	2/20
1 1/4"	41415	2/20
1 1/2"	41416	2/10
2"	41417WHV	1/10
SWT × Rotating Flange		
3/4"	51413	2/20
1"	51414	2/20
1 1/4"	51415	2/20
1 1/2"	51416	2/10
2"	51417WHV	1/10
Press × Rotating Flange	250 CWP/250°F Max	
3/4"	81413HV	1/20
1"	81414HV	1/20
1 1/4"	81415HV	1/10
1 1/2"	81416HV	1/10
2"	81417HV	1/10

REPLACES:
2 Ball Valves
1 Brass Tee
3 Copper Nipples
1 Boiler Drain
1 Flange

B THE ISOLATOR™ W/ ROTATING FLANGE
Full Port Forged Brass Uni-Flange Ball Valve w/ Detachable Rotating Flange
Adjustable Packing Gland, Nuts & Bolts - 600 WOG

SIZE	ITEM #	CTN/CASE
IPS × Rotating Flange		
3/4"	41403	2/20
1"	41404	2/20
1 1/4"	41405	2/20
1 1/2"	41406	2/20
2"	41407WHV	1/10
SWT × Rotating Flange		
3/4"	51403	2/20
1"	51404	2/20
1 1/4"	51405	2/20
1 1/2"	51406	2/20
2"	51407WHV	1/10
Press × Rotating Flange	250 CWP/250°F Max	
3/4"	81403HV	1/20
1"	81404HV	1/20
1 1/4"	81405HV	1/20
1 1/2"	81406HV	1/10
2"	81407HV	1/10

REPLACES:
1 Ball Valve
1 Copper Nipple
1 Flange

C BALL DRAIN™
Full Port Forged Brass Ball Valve w/ Hi-Flow Hose Drain
Adjustable Packing Gland & Reversible Handle - 600 WOG

SIZE	ITEM #	CTN/CASE
IPS × Hose		
1/2"	40612	6/36
3/4"	40613	6/36
1"	40614	4/24
1 1/4"	40615	2/12
1 1/2"	40616	2/12
2"	40617	1/6
C×C × Hose		
1/2"	50612	6/36
3/4"	50613	6/36
1"	50614	4/24
1 1/4"	50615	2/12
1 1/2"	50616	2/12
2"	50617	1/6
SWT × IPS × Hose		
1/2"	54612	6/36
3/4"	54613	6/36
1"	54614	4/24
Press × Hose	250 CWP/250°F Max	
1/2"	80612	4/40
3/4"	80613	4/32
1"	80614	2/20
1 1/4"	80615	2/16
1 1/2"	80616	1/8
2"	80617	1/6

REPLACES:
1 Ball Valve
1 Brass Tee
1 Copper Nipple
1 Boiler Drain

D PURGE TEE™
Full Port Forged Brass Ball Valve
Primary/Secondary Loop Purge Tee
w/ Reversible Handle - 600 WOG

SIZE	ITEM #	CTN/CASE
C×C		
1" × 3/4"	58643	1/12
1" × 1"	58644	1/12
1 1/4" × 1/2"	58652	1/12
1 1/4" × 3/4"	58653	1/12
1 1/4" × 1"	58654	1/12
1 1/4" × 1 1/4"	58655	1/12
1 1/2" × 1/2"	58662	1/12
1 1/2" × 3/4"	58663	1/12
1 1/2" × 1"	58664	1/12

REPLACES:
1 Ball Valve
2 Copper Tees
2 Copper Nipples

E UNION BALL DRAIN™
Full Port Forged Brass Ball Valve
w/ Single Union End, Hi-Flow Hose Drain
Adjustable Packing Gland &
Reversible Handle - 600 WOG

SIZE	ITEM #	CTN/CASE
IPS Union × IPS × Hose		
3/4"	40433	6/24
1"	40434	4/16
1 1/4"	40435	2/12
1 1/2"	40436	2/12
IPS Union × SWT × Hose		
3/4"	50433	6/24
1"	50434	4/16
1 1/4"	50435	2/12
1 1/2"	50436	2/12

REPLACES:
1 Ball Valve
1 Brass Tee
2 Copper Nipples
1 Boiler Drain
1 Union Fitting

F FORGED BRASS AIR SEPARATOR
w/ Removable Vent Head & Coalescing Medium 150 PSI

SIZE	ITEM #	CTN/CASE
IPS		
3/4"	74003	1/10
1"	74004	1/10
1 1/4"	74005	1/10
1 1/2"	74006	1/10
2"	74007	1/10
C×C		
3/4"	75003	1/10
1"	75004	1/10
1 1/4"	75005	1/10
1 1/2"	75006	1/10
2"	75007	1/10
Press		
3/4"	78003	1/10
1"	78004	1/10
1 1/4"	78005	1/10
1 1/2"	78006	1/10
2"	78007	1/10

REPLACES:
1 Ball Valve
2 Brass Tees
3 Threaded Nipples
1 Boiler Drain

G EXPANSION TANK PRO SERVICE VALVE
Full Port Forged Brass Ball Valve
w/ Hi-Flow Hose Drain - 600 WOG

SIZE	ITEM #	CTN/CASE
FIP × MIP × FIP × Hose		
1/2"	41672	1/30

REPLACES:
1 Ball Valve
1 Brass Tee
3 Threaded Nipples
1 Boiler Drain

H T-DRAIN™
Full Port Forged Brass Fitting
w/ Hi-Flow Hose Drain - 600 WOG

SIZE	ITEM #	CTN/CASE
IPS × Hose		
1/2"	40672	10/80
3/4"	40673	8/48
1 1/2"	40676	4/24
2"	40677	2/20
SWT × Hose		
1/2"	50672W	8/80
3/4"	50673W	6/48
1"	50674W	4/40
1 1/4"	50675W	4/40
1 1/2"	50676W	2/24
2"	50677W	2/20

REPLACES:
1 Brass Tee
1 Boiler Drain

I PURGE & FILL™
Full Port Forged Brass Ball Valve
w/ (2) Hi-Flow Hose Drains
Adjustable Packing Glands &
Reversible Handle - 600 WOG

SIZE	ITEM #	CTN/CASE
IPS × Hose		
3/4"	48613	1/12
1"	48614	1/12
1 1/4"	48615	1/12
1 1/2"	48616	1/12
SWT × Hose		
3/4"	58613	1/12
1"	58614	1/12
1 1/4"	58615	1/12
1 1/2"	58616	1/12

REPLACES:
1 Ball Valve
2 Brass Tees
2 Copper Nipples
2 Boiler Drains

J FULL PORT FORGED BRASS BALL VALVE
w/ Adjustable Packing Gland - 600 WOG/150 WSP
(400 WOG/125 WSP for 2 1/2" - 4")

SIZE	ITEM #	CTN/CASE
IPS		
1/4"	41700	10/100
3/8"	41701	10/100
1/2"	41702	10/80
3/4"	41703	10/60
1"	41704	6/36
1 1/4"	41705	6/24
1 1/2"	41706	2/16
2"	41707	2/12
C×C		
1/2"	51702	10/80
3/4"	51703	10/60
1"	51704	6/36
1 1/4"	51705	6/24
1 1/2"	51706	2/16
2"	51707	2/12
Press		
1/2"	81702	5/50
3/4"	81703	5/40
1"	81704	4/20
1 1/4"	81705	5/20
1 1/2"	81706	4/16
2"	81707	2/8

REPLACES:
1 Ball Valve
1 Brass Tee
2 Copper Nipples
1 Boiler Drain
1 Union Fitting

K FULL PORT FORGED BRASS BALL VALVE
w/ Cap, Strap, Adjustable Packing Gland &
Reversible Handle - 600 WOG/150 WSP

SIZE	ITEM #	CTN/CASE
IPS × Hose		
1/2" × 3/4"	40312W	10/60
3/4" × 3/4"	40313W	10/60
SWT × Hose		
1/2" × 3/4"	50312W	10/100
3/4" × 3/4"	50313W	10/60

L THERMOSTATIC MIXING VALVE
For Hydronic & Water Distribution Systems
Outlet Temperature - Range 95-131°F - 150 PSI

SIZE	ITEM #	CTN/CASE
MIP		
1/2"	74102W	1/10
3/4"	74103W	1/10
1"	74104W	1/10
SWT		
1/2"	75102W	1/10
3/4"	75103W	1/10
1"	75104W	1/10
PEX		
1/2"	73102W	1/10
3/4"	73103W	1/10
Press		
1/2"	78102W	1/10
3/4"	78103W	1/10
1"	78104W	1/10
MIP w/ Integral Check Valve		
1/2"	74202W	1/10
3/4"	74203W	1/10
1"	74204W	1/10
SWT w/ Integral Check Valve		
1/2"	75202W	1/10
3/4"	75203W	1/10
1"	75204W	1/10
PEX w/ Integral Check Valve		
1/2"	73202W	1/10
3/4"	73203W	1/10
Press w/ Integral Check Valve		
1/2"	78202W	1/10
3/4"	78203W	1/10
1"	78204W	1/10
Compression w/ Integral Check Valve		
3/8"	74401W	1/10

HYDRO-CORE™

A REVOLUTIONARY APPROACH TO HYDRONIC INSTALLATIONS

Easily Select the Hydro-Core Products for the Boilers You Stock
Boiler Compatibility Guides Are Available at www.webstonevalves.com/hydrocore
Or Call Us and Let Us Do It for You! (800) 225-9529

DESIGNED SPECIFICALLY FOR

NEAR BOILER LOOPS:

Floor Standing Side Mount Boilers

Floor Standing Top Mount Boilers

Wall Hung Boilers

Wall Hung Boilers w/ Integral Pump

SECONDARY CIRCUIT LOOPS:

VERSATILE SOLUTIONS

The Hydro-Core system offers varying degrees of simplicity and customization depending on your needs. See www.webstonevalves.com/hydro-core/boilercompatibility for a complete list of parts and accessories.

COMPLETE

M HYDRO-CORE COMPLETE KITS

Everything but the pump! A complete solution for a wide array of boilers, includes the manifold, piping and all boiler connections.

NEAR BOILER PIPING SOLUTIONS

HYDRO-CORE COMPONENT KITS

Pipe it yourself. Utilize Near Boiler Component kits including the manifold, pump connections, and boiler connections.

CUSTOM SECONDARY LOOP SOLUTIONS

N HYDRO-CORE MANIFOLD ONLY

Utilize the manifold and basic union connection, but complete the rest of the work in the field. Available in Flange Left, Flange Right, or Double Ball Drain.

INSTALLATION KITS AVAILABLE TO FIT OVER 250 DIFFERENT BOILERS FROM:*

- BAXI • BIASI • BOSCH • BRADFORD WHITE • BURNHAM • CROWN BOILER • HEAT TRANSFER PRODUCTS
- IBC TECHNOLOGIES • LAARS • LOCHINVAR • NAVIEN • NEW YORK THERMAL NTI • NORITZ • PEERLESS
- PENSOTTI • RAYPAK • SIME • SLANT FIN • TRIANGLE TUBE • VISSMANN • WEIL-MCLAIN

* All manufacturer names are trademarked or registered trademark property of their respective owners. Webstone products are not manufactured, sponsored, authorized, or endorsed by any party unless otherwise noted.