

Steel Square Boxes & Covers

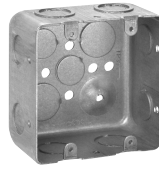
4" SQUARE TWO-DEVICE BOXES – 30.3 CUBIC INCH CAPACITY

2 1/8" DEEP

UL LISTED



TP391



TP395

KNOCKOUTS

Cat. #	Bracket	Description	Sides	Bottom	Std. Unit Pkg.	Wt. Lbs. Per 100
TP391	"VS", Set 7/8"	Drawn	6 – 1/2", 3 – 3/4"	3 – 1/2", 2 – 3/4"	25	95
TP395	—	Drawn	8 – 1/2", 4 – 3/4"	3 – 1/2", 2 – 3/4"	25	84

4" SQUARE EXTENSION RINGS

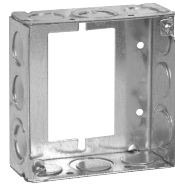
1 1/2" DEEP WITH CONDUIT KNOCKOUTS – 21.0 CUBIC INCH CAPACITY

2 1/8" DEEP WITH CONDUIT KNOCKOUTS – 30.3 CUBIC INCH CAPACITY

UL LISTED



TP424



TP422†



TP426



TP428RED



TP443 (2 1/8" Deep)



TP428, TP833*

Cat. #	KNOCKOUTS Sides	Bottom	Unit Qty.	Wt. Lbs. Per 100
1 1/2" DEEP				
TP424	12 – 1/2"	—	50	46
TP422	8 – 1/2", 4 – 1/2" + 3/4" E	—	50	50
TP426	8 – 3/4"	—	50	46
TP428	8 – 1/2", 4 – 3/4"	—	50	46
TP428RED	8 – 1/2", 4 – 3/4"	—	50	46
TP833*	8 – 1/2", 4 – 3/4"	—	50	48
2 1/8" DEEP				
TP443	8 – 1/2", 4 – 3/4"	—	25	66
TP465	8 – 1"	—	25	60

*For Air Plenum (No Mounting Holes). Requires the use of TP854, purchase separately - Not UL Listed

†For use as extension with switch box, not four square box

FLEXIBLE FIXTURE HANGERS

Eaton's Crouse-Hinds TPSFH square flexible fixture hangers are used in commercial or light industrial applications where HID high bay and low bay lighting fixtures are used. Specific applications include storage facilities, shipping warehouses, retail and DIY facilities.

Features and Benefits:

- Suitable for use with 1/2" or 3/4" fixture conduit stems these hangers allow the conduit stem of the fixture (luminaire) to swing in any direction. Maximum swing angle is 26° from vertical max slope angles 22 1/2°
- Available for attachment to 4" square steel boxes.
- Quickly and easily attached by two screws.
- Hangers are drilled and tapped for use with 3/4" conduit stem as standard and come supplied with a 3/4" – 1/2" reducer for 1/2" conduit stem applications.

Certifications and Compliances:

- UL Listed – UL 1598
- CSA C22.2 No. 250
- Suitable for Damp Locations

Standard Materials and Finishes:

- Material: Sheet Steel
- Finish: Zinc Chromate for corrosion resistance



Description	Support Wt. (lbs)	Cat. #
For use with 4" Square boxes	50	TPSFH12

Crouse-Hinds
by **E.T.N**