


For Residential and Commercial Applications

Job Name		Engineer / Architect	
Job Location		Wholesaler	
Submittal Date		Contractor	

WB00/ WB10 7/8" OD Copper Water Heater Connectors – Female Iron Pipe x Female Iron Pipe

Use: For use in exposed locations only to connect water heaters and other water connected devices to the water supply

Design Features:

- **Superior galvanic corrosion resistance.** Patented internal dielectric sleeve effectively isolates dissimilar metals within the waterway to prevent galvanic corrosion
- **No dielectric union needed** with installation. Dielectric is built-in to the design of the connector
- **Less torque to seal** against the pliable rubber washer, especially on rough nipple surfaces
- **Longer connector nuts** allow a greater number of thread-to-thread contacts and a better seal
- **100% Compliant (WB00 only)** 

Operating Specifications:

Temperature: 40° - 180° F (NSF61 maximum 82° C)

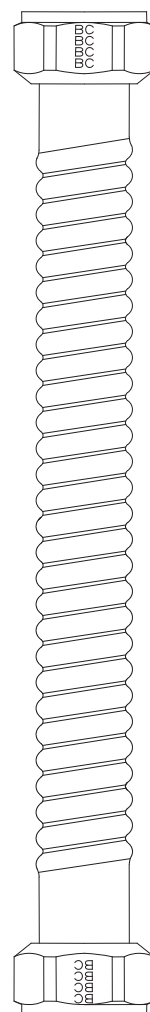
Pressure: water pressures up to 125 PSI maximum

CONNECTOR MATERIAL SPECIFICATIONS

Tubing	Copper
Dielectric Sleeve	Polypropylene
Nut	Brass
End Fitting	Brass
Washer	Rubber

Part Listing:

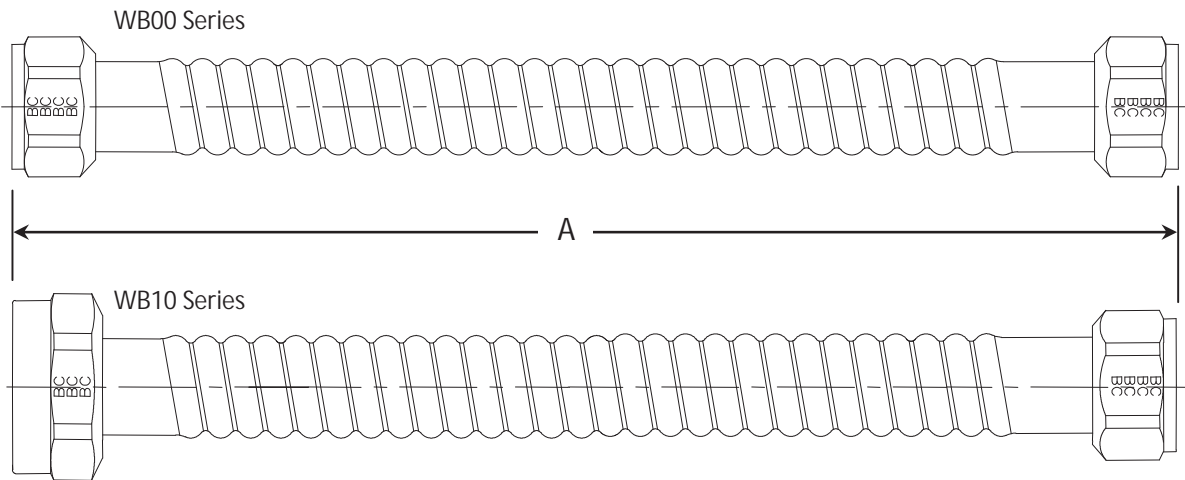
- | | | |
|--------------------------|----------|--|
| <input type="checkbox"/> | WB00-12N | 7/8" OD X 12" connector <i>with</i> 3/4" FIP x 3/4" FIP end fittings |
| <input type="checkbox"/> | WB00-15N | 7/8" OD X 15" connector <i>with</i> 3/4" FIP x 3/4" FIP end fittings |
| <input type="checkbox"/> | WB00-18N | 7/8" OD X 18" connector <i>with</i> 3/4" FIP x 3/4" FIP end fittings |
| <input type="checkbox"/> | WB00-24N | 7/8" OD X 24" connector <i>with</i> 3/4" FIP x 3/4" FIP end fittings |
| <input type="checkbox"/> | WB00-30N | 7/8" OD X 30" connector <i>with</i> 3/4" FIP x 3/4" FIP end fittings |
| <input type="checkbox"/> | WB00-36N | 7/8" OD X 36" connector <i>with</i> 3/4" FIP x 3/4" FIP end fittings |
| <input type="checkbox"/> | WB10-18N | 7/8" OD X 18" connector <i>with</i> 1" FIP x 3/4" FIP end fittings |



This specification and all information contained herein is the confidential and exclusive property of BrassCraft Manufacturing, and shall not be disclosed to others without the written consent of BrassCraft Mfg. This specification must be returned to BrassCraft Mfg if requested.

BrassCraft®

WB00/ WB10 7/8" OD Copper Water Heater Connectors – Female Iron Pipe x Female Iron Pipe



PART DIMENSIONS (Inches)							
Connector Length – Nut by Nut ($\pm .31$)							
Model	Dim.	12"	15"	18"	24"	30"	36"
WB00	A	12.31	15.31	18.31	24.31	30.31	36.31
WB10	A	-----	-----	18.31	-----	-----	-----

Listings & Certifications (WB00 Series only):

- IAPMO listed to ASME A112.18.6 and CSA B125 (File # 0452)
- CSA listed to CSA B125 (File # 204593)
- Compliant product CSA listed to Low Lead Content Certification Program – Plumbing Products Class 6853-01



This specification and all information contained herein is the confidential and exclusive property of BrassCraft Manufacturing, and shall not be disclosed to others without the written consent of BrassCraft Mfg. This specification must be returned to BrassCraft Mfg if requested.

BrassCraft®