

ATX™ D Series Actuators, Pilot Lights, Contact Blocks, Switches and Accessories

Flameproof

ATEX/IECEX:
Zone 1 and 2 – 21 and 22
II 2 GD
IP66 – IK10

Applications

- Suitable for use with certified flameproof Ex d enclosures for control equipment.

Features

- DIN rail mounted (TS35) and panel mounted versions.
- Large range of M22 x 1.5 mm (0.059") screwed actuator operators including, push buttons, rotary actuators, pilot lights, ammeters and selector switches.
- Fully supplied with actuator, shaft, contact block and yellow laminated plastic legend plate with black lettering 60 x 50 mm (2.36" x 1.97").

Standard Materials

- Box: gray painted marine grade aluminum alloy
- CF2B box: gray painted cast iron for CF2B

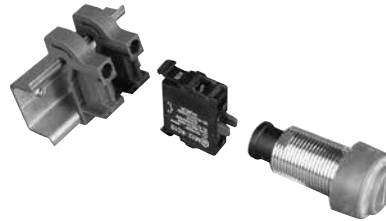
ATEX/IECEX Certifications and Compliances

- Certification Type TCD
 - Gas, Zones 1 and 2
 - Conforming to ATEX 94/9/CE: II 2 G
 - ATEX/IEC Protection: Ex d IIC
 - Dust, Zones 21 and 22
 - Conforming to ATEX 94/9/CE: II 2 D
 - ATEX/IEC Protection: Ex tD A21
 - Surface Temperature: -40 °C to +60 °C (-40 °F to +140 °F)
 - CE Declaration of Conformity: 5C213
 - ATEX Certificate: LCIE 02 ATEX 0036 U
 - IECEx Certificate: IECEx LCI 10.0022U
- Index of Protection according EN/IEC 60529: IP66
- Impact Resistance (shock): IK10

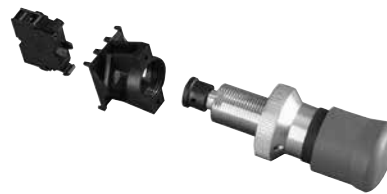
EURASEC Certification

- EURASEC RU C-FR. 1505.B.00909

Rail Mounted Version








Panel Mounted Version



ATX™ D Series Accessories

Flameproof

ATEX/IECEX:
Zone 1 and 2 – 21 and 22
II 2 GD
IP66 – IK10

	Description/Function	Weight kg (lb)	Volume dm³ (in³)	Catalog Number
	Spare Shrouds for Spring Return Push Buttons			
	Green shroud marked "I"	0.1 (0.22)	0.2 (12.20)	DSG
	Red shroud marked "0"	0.1 (0.22)	0.2 (12.20)	DSR
	Green shroud marked "start"	0.1 (0.22)	0.2 (12.20)	DSS
	Red shroud marked "A Réarmement"	0.1 (0.22)	0.2 (12.20)	DSA
	Black shroud (unmarked)	0.1 (0.22)	0.2 (12.20)	DSN
	Blue shroud (unmarked)	0.1 (0.22)	0.2 (12.20)	DSB
	Aluminum Guard Painted Red			
	Mushroom head actuator protection			DGD1A
	Stainless Steel Padlocking Devices			
	For spring return push button			DPLD1S
	For rotary actuator, red mushroom head spring return or push-pull			DPLD2S
	Spare Lenses for Pilot Lights			
	Red	0.1 (0.22)	0.2 (12.20)	DPRENS
	Green	0.1 (0.22)	0.2 (12.20)	DPGLENS
	White	0.1 (0.22)	0.2 (12.20)	DPWLENS
	Blue	0.1 (0.22)	0.2 (12.20)	DPBLENS
	Yellow	0.1 (0.22)	0.2 (12.20)	DPYLENS
	Spare Handle for Switches			
	Non-padlockable handle	0.2 (0.44)	0.2 (12.20)	DSNPH
	Padlockable handle — 48 mm x 48 mm (1.89" x 1.89")	0.06 (0.13)	0.3 (18.31)	DSPH
	Laminated Plastic Legend Plate with Black Lettering			
	Large size — 60 mm x 50 mm (2.36 in x 1.97")			DLP00
	Small size — 45 mm x 31.2 mm (1.77" x 1.24")			DLP01
	Blanking Plug			
	Used to close up unused openings on cover M22 x 1.5 mm (0.059")	0.2 (0.44)	0.2 (12.20)	DBPM22