

# T8

## 12T8/PRO/48-840/IF18/G 10/1 FB

Our TLEDs are available in InstantFit (Type A / Type C) or MainsFit (Ballast bypass / Type B) versions. The InstantFit lamps work on a broad variety of ballasts and LED drivers. Only InstantFit has over 15,000 lamp & ballast combinations delivering even light output, energy savings and a long lifetime. Our MainsFit products feature a double-ended design, simplifying installation while a proprietary safety circuit minimizes a shock risk. Lamp sizes range from 2-foot to 8-foot and U-bend with a variety of lumen outputs.

### Product data

General Information		Lamp Current (Max)	
Base	G13 [ Medium Bi-Pin Fluorescent]	Lamp Current (Min)	260 mA
EU RoHS compliant	Yes	Starting Time (Nom)	100 mA
Nominal Lifetime (Nom)	50000 h	Warm Up Time to 60% Light (Nom)	0.5 s
Switching Cycle	50000X	UL Type	Type A - works on ballast Type C - works with dedicated LED driver Type A+C - works with both ballasts and the LED driver
Light Technical		Power Factor (Nom)	0.9
Color Code	841 [ CCT of 4100K (841)]	Voltage (Nom)	120-277, 347 V
Beam Angle (Nom)	240 °	Temperature	
Initial lumen (Nom)	1800 lm	T-Ambient (Max)	45 °C
Color Designation	Cool White (CW)	T-Ambient (Min)	-20 °C
Correlated Color Temperature (Nom)	4000 K	T-Storage (Max)	65 °C
Luminous Efficacy (rated) (Nom)	150.00 lm/W	T-Storage (Min)	-40 °C
Color Consistency	<6	T-Case Maximum (Nom)	50 °C
Color Rendering Index (Nom)	82	Controls and Dimming	
LLMF At End Of Nominal Lifetime (Nom)	70 %	Dimmable	No
Operating and Electrical			
Input Frequency	25000-105000 Hz		
Power (Rated) (Nom)	12 W		

Mechanical and Housing	
Product Length	1200 mm
Approval and Application	
Energy Efficiency Label (EEL)	Not applicable
Energy Saving Product	Yes
Approbation Marks	UL certificate RoHS compliance DLC compliance
Energy Consumption kWh/1000 h	- kWh
Energy Certifications	DLC Standard

Dimensional drawing

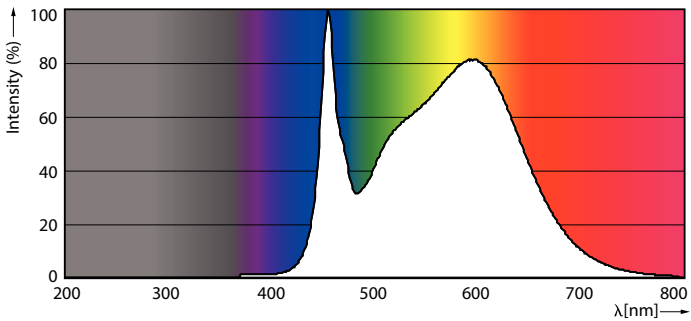


Product Data	
Order product name	12T8/PRO/48-840/IF18/G 10/1 FB
EAN/UPC - Product	046677530488
Order code	530485
Numerator - Quantity Per Pack	1
Numerator - Packs per outer box	10
Material Nr. (12NC)	929001866204
Net Weight (Piece)	0.215 kg
Model Number	9290018662

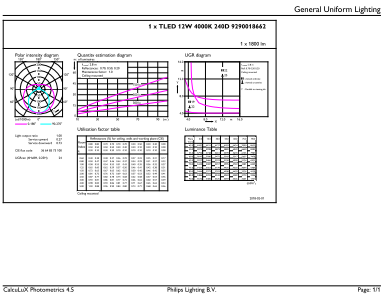
Product	D1	D2	A1	A2	A3
12T8/PRO/48-840/IF18/G 10/1 FB	25.7 mm	26.3 mm	1198.1 mm	1205.2 mm	1212.3 mm

TLED 1200mm T8 120-277V 1700lm 4000K G13

Photometric data

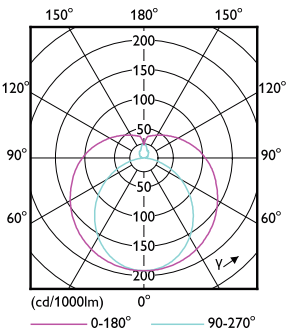


12W G13



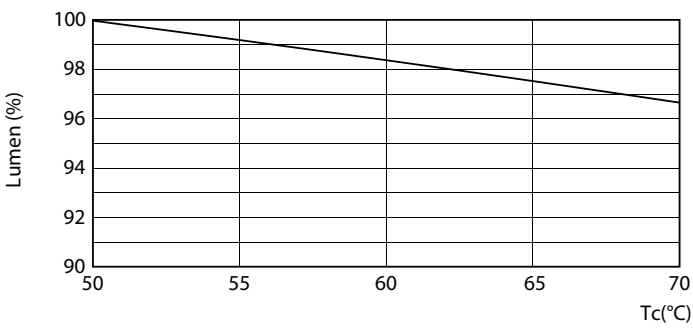
12W G13 840 4000K

Photometric data

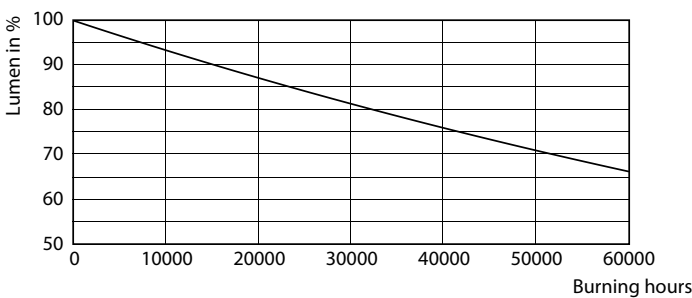


12W G13 830 3000K

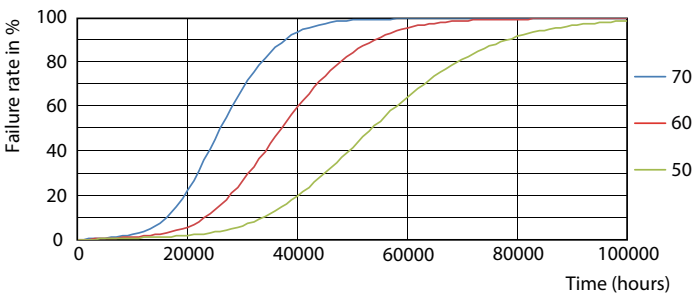
Lifetime



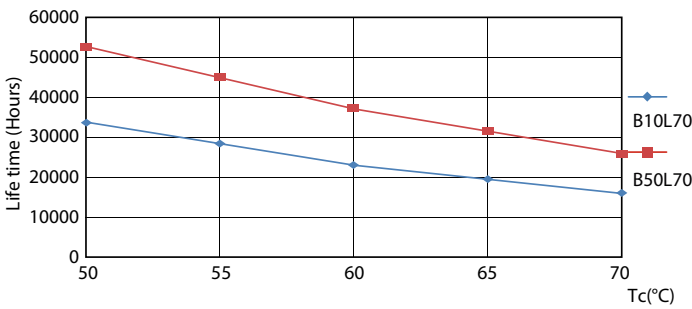
12W G13



12W G13

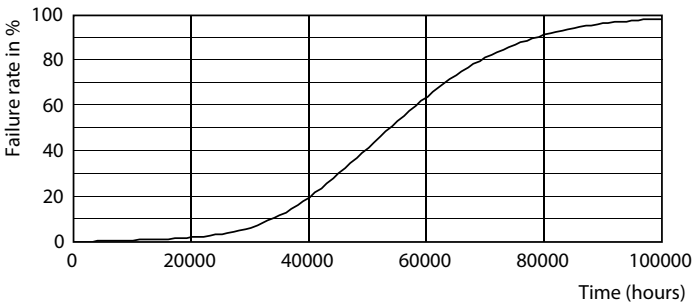


12W G13



12W G13

Lifetime



12W G13

